

ALAMEDA COUNTY TRANSPORTATION COMMISSION
Goods Movement Collaborative
and Goods Movement Plan Update



A presentation by
Tess Lengyel, Deputy Director Planning and Policy
Michael Fischer, Cambridge Systematics Project Manager

Goods Movement Collaborative and Plan Update

- Update on Collaborative and Plan Actions
- Introduction of Consultant Team
- Overview of Implementation Schedule

Goods Movement Collaborative and Plan – An Integrated Approach

Goods Movement Collaborative

- Bring together partners/stakeholders
- Serve as organized structure for the Goods movement
 - Policy development
 - Planning in Alameda County and the region
 - Advocacy for goods movement projects and programs

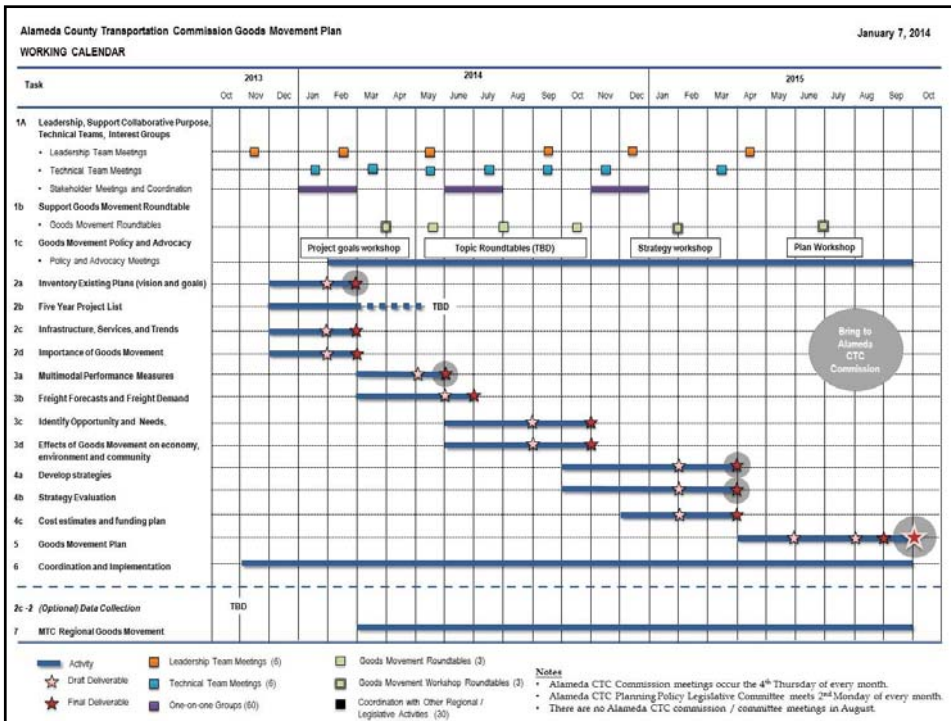
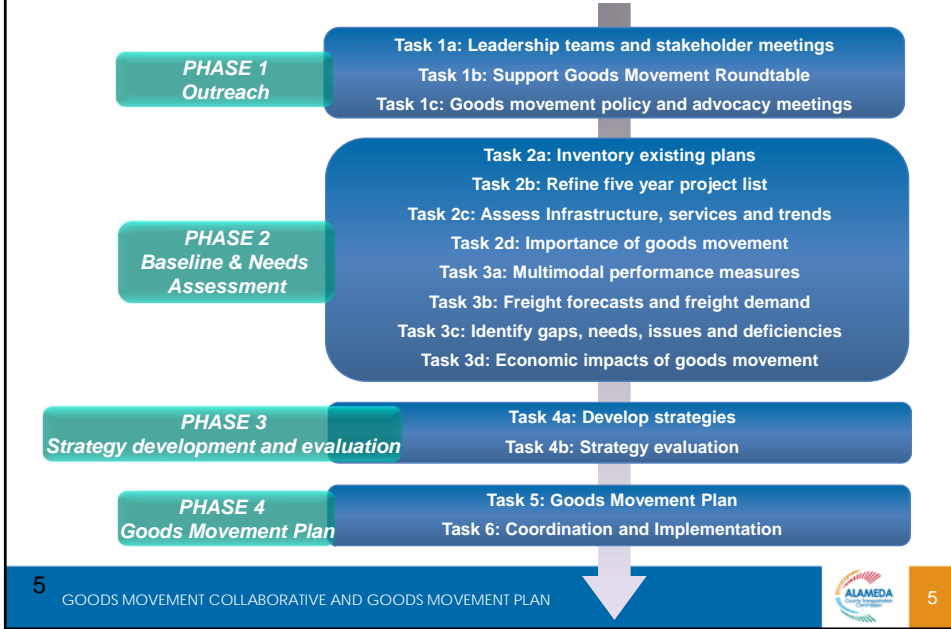
Goods Movement Plan

- Develop long-range vision and identify the following:
 - Needs and short- and long-term priorities
 - Benefits goods movement in Alameda County brings to the nation, state and region

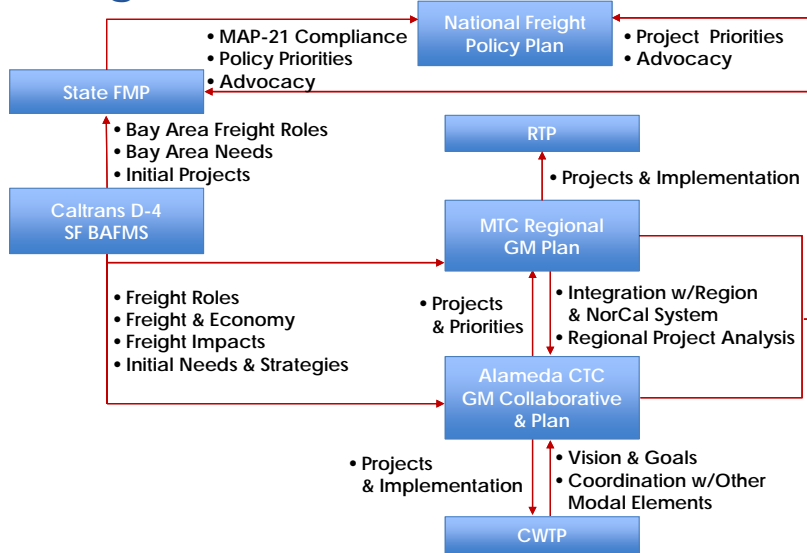
Update on Collaborative and Plan Progress

- Completed inventory of Plans as first step in needs assessment
- Provided initial list to MTC/Caltrans for state plan process
- Selection of Consultant Team Complete and approved by Commission on October 24, 2013
- Consultant work commenced in October

Project Approach



Freight Studies and Plans



GOODS MOVEMENT COLLABORATIVE AND GOODS MOVEMENT PLAN



7

How Bay Area/Alameda County Studies Inform Each Other

- Caltrans D-4 – SF Bay Area Freight Mobility Study
 - *Role of Goods Movement in the Bay Area and Economic Contributions of Goods Movement – basis for advocacy*
 - *Defines key functions, modal systems*
 - *Initial assessment of future demand and needs and deficiencies for key functional elements (high level)*
 - *Initial assessment of impacts on communities and the environment*
 - *Initial strategy concepts and regional project list*

GOODS MOVEMENT COLLABORATIVE AND GOODS MOVEMENT PLAN



8

How Bay Area/Alameda County Studies Inform Each Other (cont.)

- MTC Regional Goods Movement Plan
 - *Greater level of analysis of needs and strategies on regional and mega-regional scale – regional freight forecasts and prioritization*
 - *Broad outreach to regional and Northern California stakeholders*
 - *Coordinated regional advocacy*
 - *Input to next Regional Transportation Plan*

How Bay Area/Alameda County Studies Inform Each Other (concl.)

- Alameda CTC Goods Movement Plan
 - *“Deeper dive” on arterial system and local streets*
 - *More work on Last Mile Connectors and Urban Goods Movement*
 - *Local/regional freight forecasts*
 - *Comprehensive project and strategy evaluation and project prioritization*
 - *Broad outreach to countywide stakeholders and coordination with regional and Northern California outreach*
 - *Coordination with other countywide modal plans, CIP/PIP, and CWTP*

Collaborative Outreach

- Leadership Team – Guidance and advocacy
 - *Executive level from key partner agencies*
- Technical Team – technical review and input
 - *Staff from cities, transit agencies, MTC, BAAQMD, Port, Caltrans*
- Interest groups – meaningful and frequent input
 - *Private sector, economic development and business groups, environmental groups, public health groups, community groups*
- Roundtables – building stakeholder collaboration
 - *Representatives from interest groups*



Technical Team Responsibility

- *Attend 6- 9 Technical Team meetings between January 2014 and the Fall of 2015 (TBD)*
- *Represent diverse opinions and perspectives*
- *Balance community needs and objectives with Alameda County goals*
- *Provide technical input on deliverables and outreach processes*
- *Review, respond to outreach findings and stakeholder feedback*
- *Inform decision-makers, elected officials and colleagues about plan processes and progress*



Work in Progress

- Outreach
 - *Draft outreach plan in review*
 - *Stakeholder outreach teams and groups forming*
 - *Technical Team survey*
 - *Issues matrix developed and interviews with stakeholders are being scheduled*
- Reviewing existing plans and studies and developing vision and goals concepts
- Compiling an initial cut at 5-year progress list
- Preparing inventory of infrastructure, services, and demographic trends
- Assembling material for advocacy white paper

Initial local area survey

- Three key reasons for the survey:
 - *Opportunities and issues to address in Goods Movement Plan*
 - *Data sources and referrals*
 - *Additional stakeholders such as local community groups, firms, and thought leaders*

Thank you for completing surveys (as of 1/7)

- | | |
|--|--------------------------------|
| • City of Union City | • City of Dublin |
| • City of Newark | • City of Pleasanton |
| • City of Hayward | • City of Alameda Public Works |
| • City of San Leandro | • MTC |
| • City of San Leandro Police Department | • AC Transit |
| • City of San Leandro Engineering & Transportation | • BART |
| • City of Hayward Planning Division | • LAVTA |
| | • Alameda County Public Works |



Next Immediate Steps

- Participate in and support technical tasks:

March 2014 *Vision and goals*

May 2014 *Multimodal performance measures and
initial freight forecasts*

July 2014 *Opportunities and needs*



Questions?