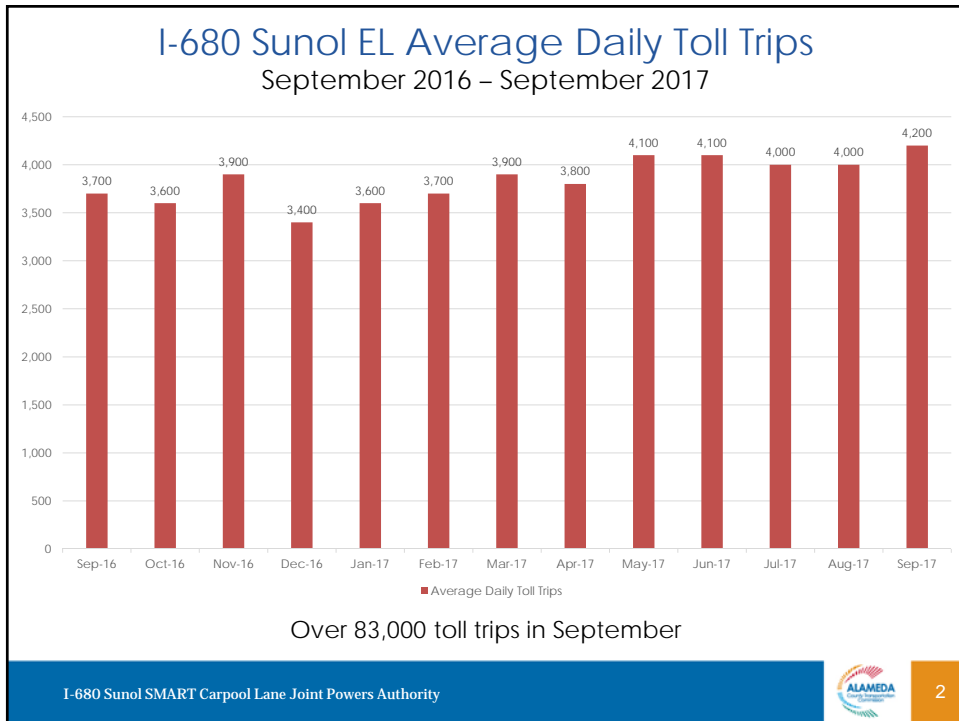


**EXPRESS LANE**  
**FASTRAK** TOLL TO  
 262 Mission \$1.50  
 237 Calaveras \$1.75  
 HOV 2+ NO TOLL

**I-680 Sunol Express Lane  
 Monthly Operations Update**

A Presentation for the  
 I-680 Sunol Smart Carpool Lane Joint Powers Authority (Sunol JPA)  
 November 13, 2017



# I-680 Sunol Corridor

Monday – Friday, September 2017  
5 am - 11 am

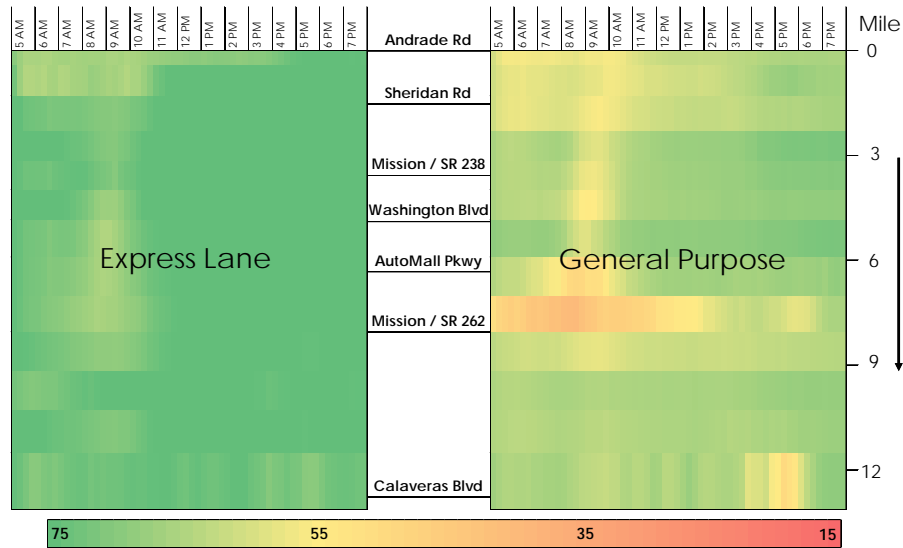
Segment	Avg Peak Speed Differential	Express Lane LOS	GP Lane LOS
North	14	B	C
Central	13	B	C
South	10	A	A

The Central Segment from Washington Blvd to South Mission Blvd (SR 262) is generally the most congested portion of the corridor.



# I-680 Sunol Corridor Average Speed Heat Map

Monday-Friday, April 2017– September 2017



## I-680 Sunol Corridor Average Speed Heat Map

Monday-Friday, January 2017– June 2017 (Feb 1-19 unavailable)



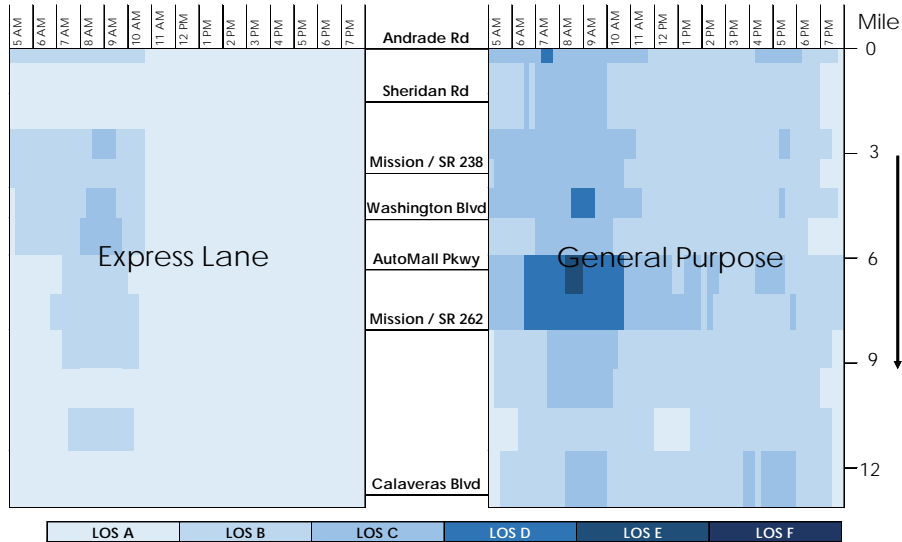
I-680 Sunol SMART Carpool Lane Joint Powers Authority



5

## I-680 Sunol Corridor Average Density Heat Map

Monday-Friday, April 2017 – September 2017



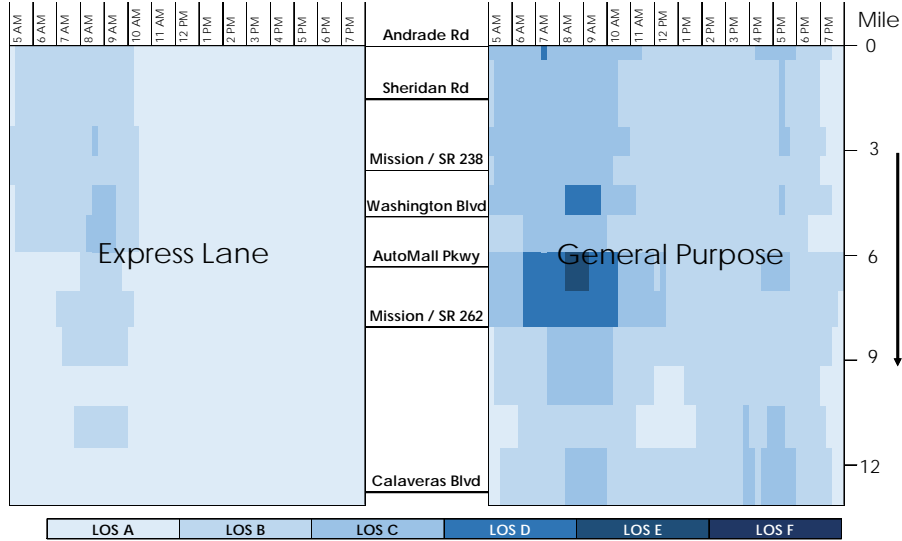
I-680 Sunol SMART Carpool Lane Joint Powers Authority



6

## I-680 Sunol Corridor Average Density Heat Map

Monday-Friday, January 2017 – June 2017 (Feb 1-19 unavailable)



I-680 Sunol SMART Carpool Lane Joint Powers Authority



7

## I-680 Sunol EL Static Toll Rate

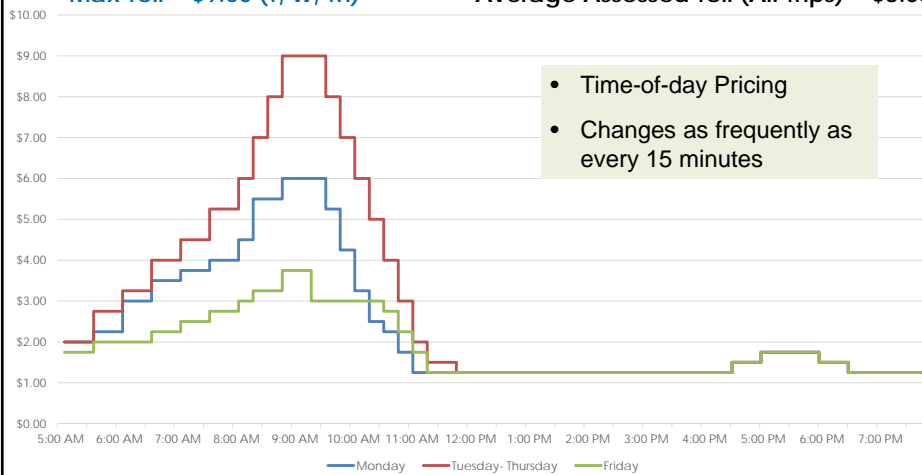
Full Corridor Travel, September 2017

Min Toll = \$0.50 (single zone)

Over 83,000 revenue trips

Max Toll = \$9.00 (T, W, Th)

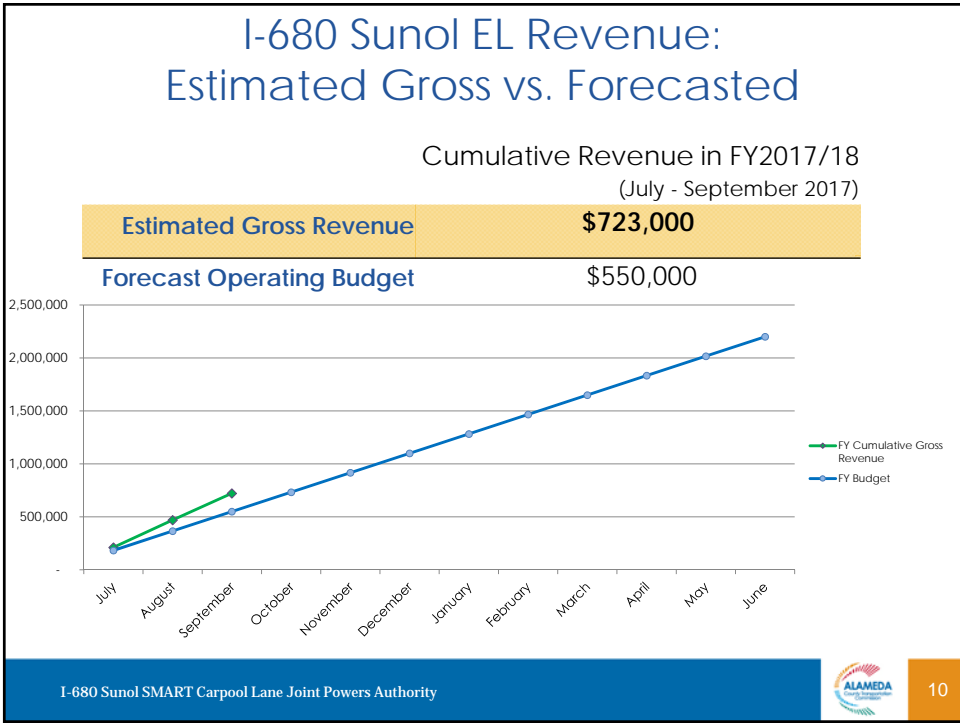
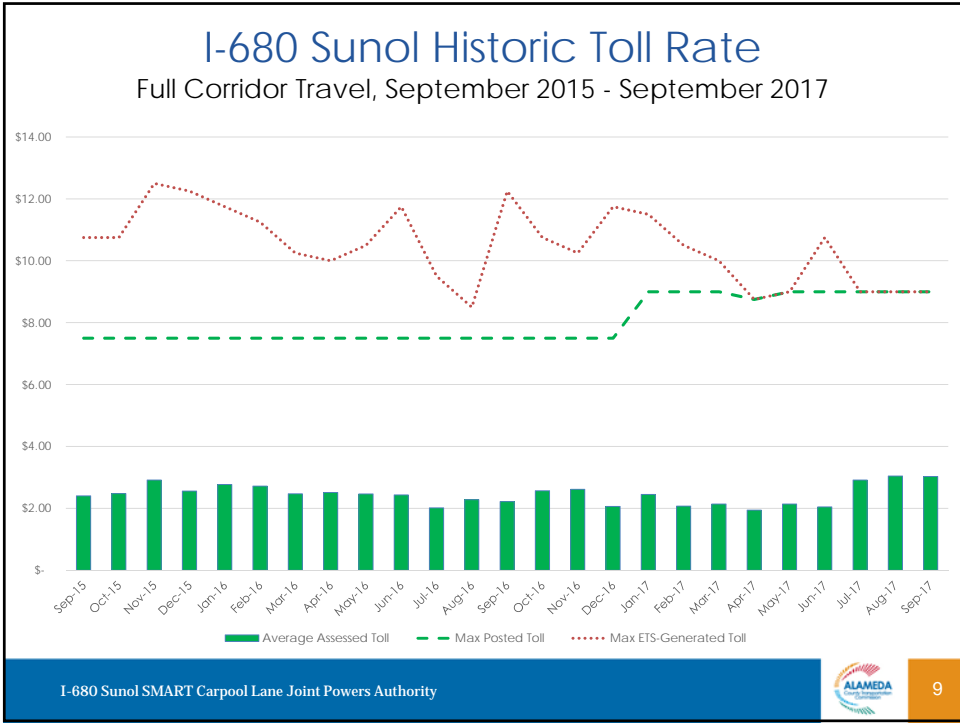
Average Assessed Toll (All Trips) = \$3.03

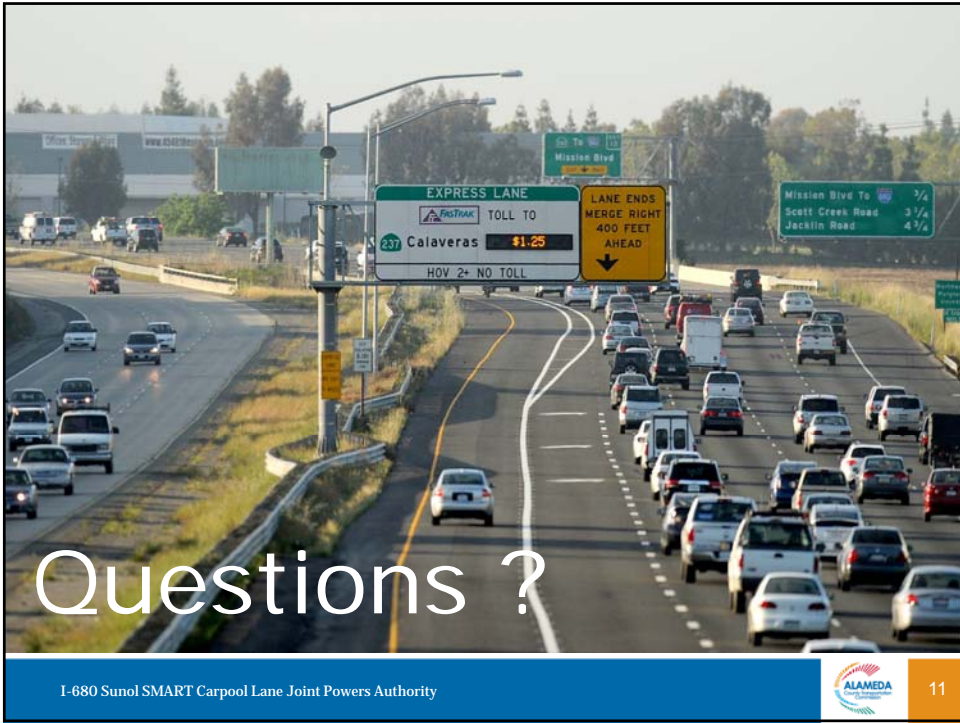


I-680 Sunol SMART Carpool Lane Joint Powers Authority



8





# Questions ?

I-680 Sunol SMART Carpool Lane Joint Powers Authority



11