



## I-680 SB Express Lane Monthly Operations January 2014 Update

A Presentation for the  
I-680 Sunol Smart Carpool Lane Joint Powers Authority (SSCLJPA)  
March 10, 2014



## Express Lane January 2014 Highlights

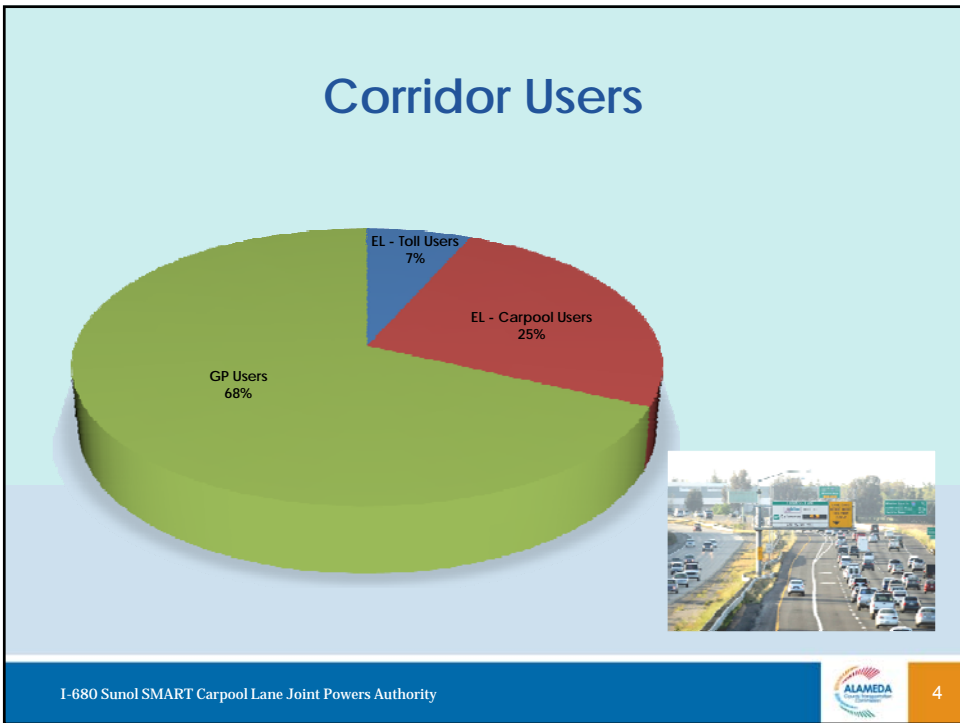
- Since 2010: **1.7 million solo drivers**
- Average Speed: **>65 MPH**
- Average Work Week Trips: **Steadily increase**
- GP Comparison: **>20 MPH**
- Average Time Savings: **>1.2 minutes**
- Toll Paying Users: **>2,500**
- Monthly Revenue: **>\$136,000**
- **>80% Repeat Customer → >90% Revenue**



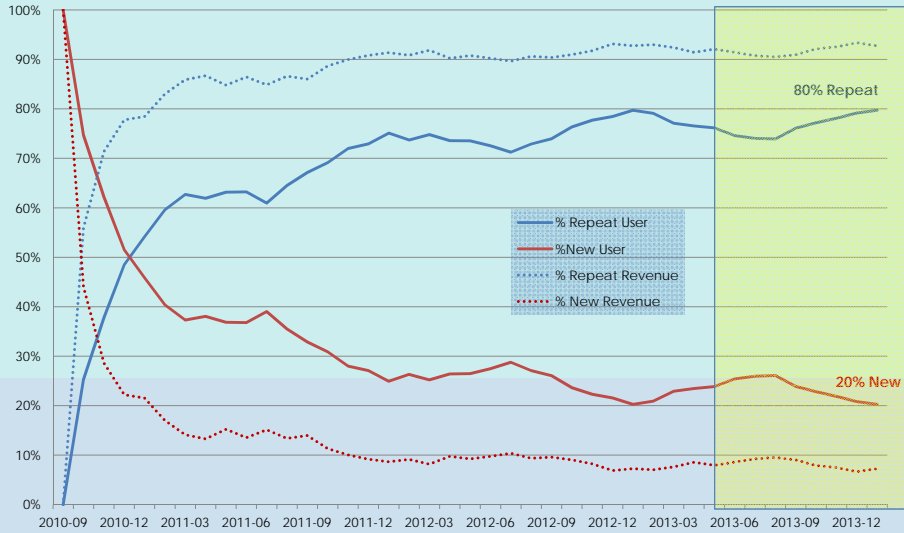
## Year Over Year Comparison by Month

	January 2013	January 2014
		↑ 22% Users
Average Daily Toll Paying Trips	2,072 vehicles	2,543 vehicles
Average Daily Toll Revenue	\$5,049	\$5,920
Average Toll Rate	\$2.44	\$2.34
Average Peak Period Toll Rate M-F 5AM to 11AM	\$3.02	\$3.02
Average Peak Period Toll Rate M-Th 5AM to 9AM	\$3.04	\$3.16

## Corridor Users



# Transponder Statistics

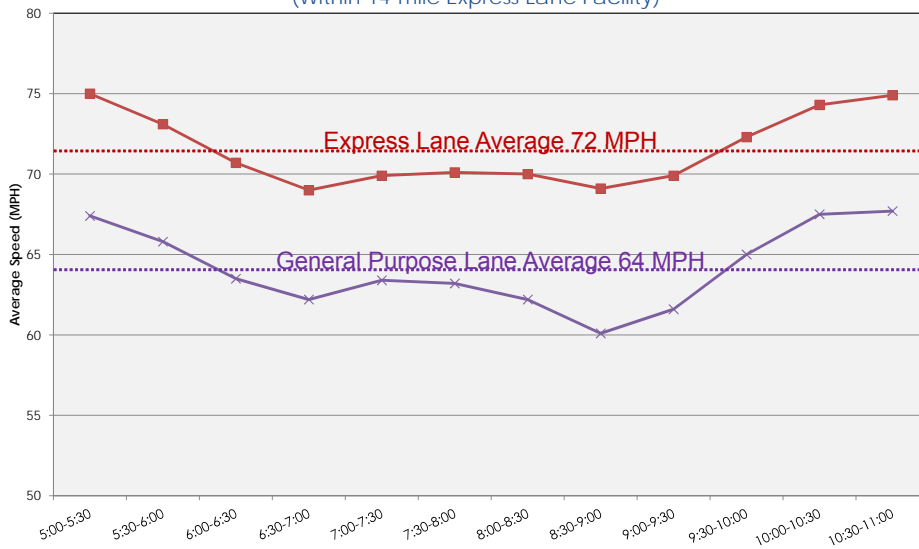


I-680 Sunol SMART Carpool Lane Joint Powers Authority



5

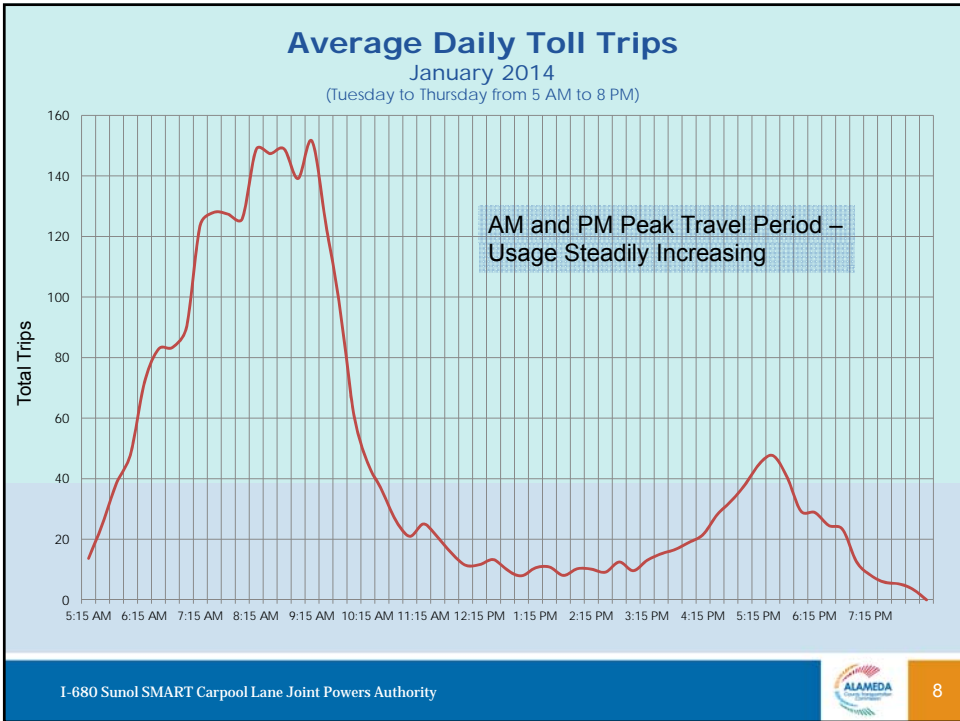
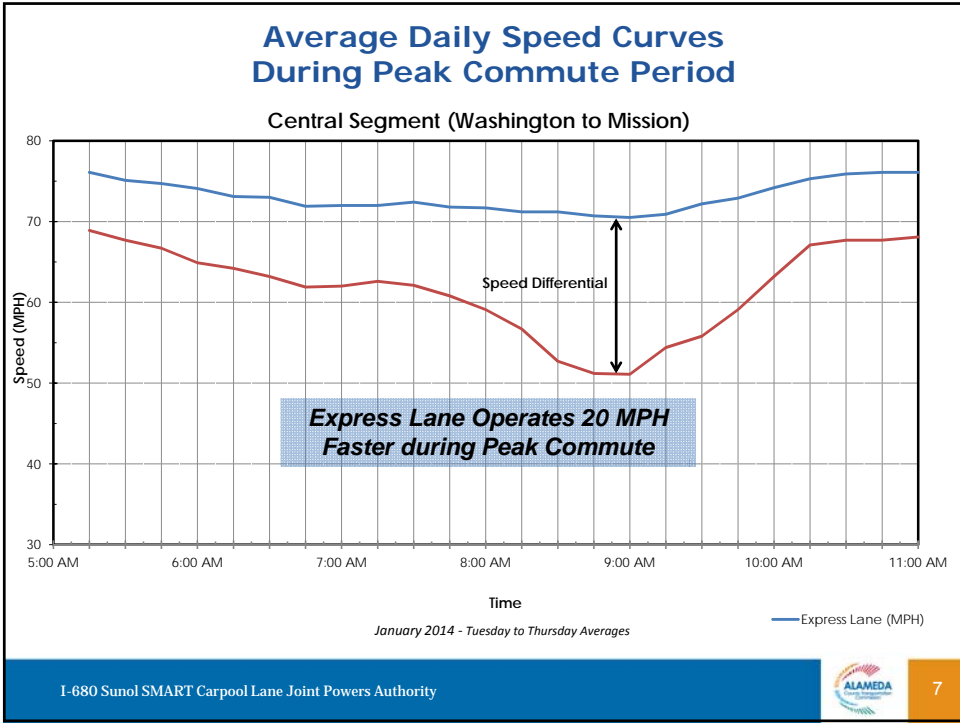
## January 2014 Average Travel Speed (Within 14-mile Express Lane Facility)



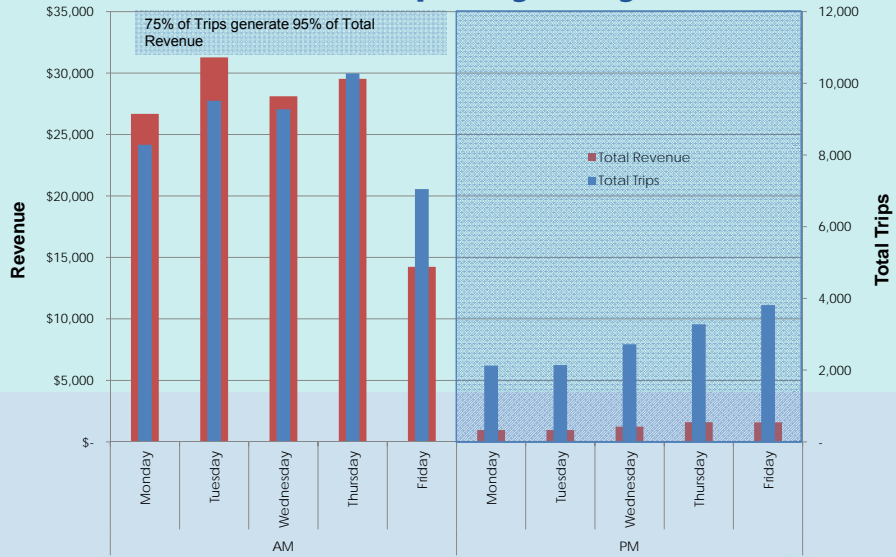
I-680 Sunol SMART Carpool Lane Joint Powers Authority



6



## Revenue and Trips by Day of Week

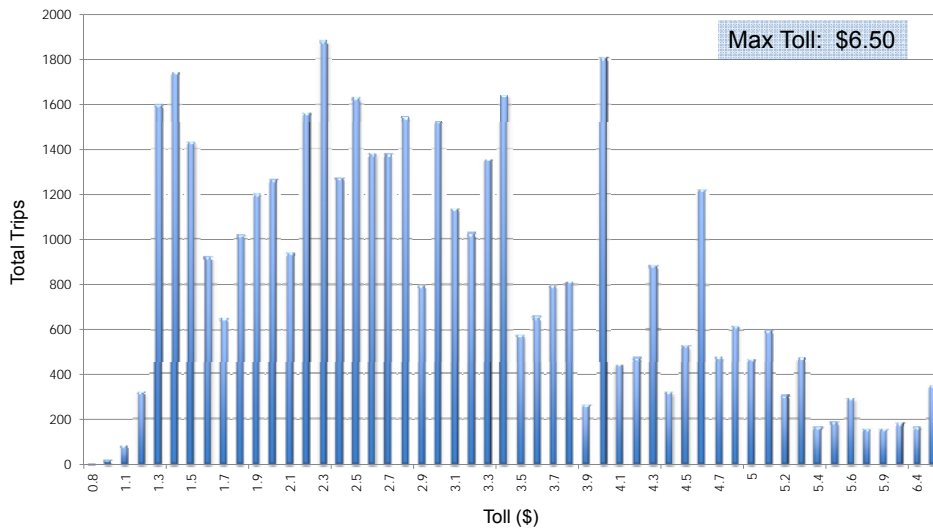


I-680 Sunol SMART Carpool Lane Joint Powers Authority



9

## January 2014 Toll Range During Peak Commute (5AM to 11AM)



I-680 Sunol SMART Carpool Lane Joint Powers Authority



10

## Revenue (Estimated Gross vs. Forecasted)

### Revenue in FY 2013/14

(July 2013 to January 2014)

Estimated Gross Revenue

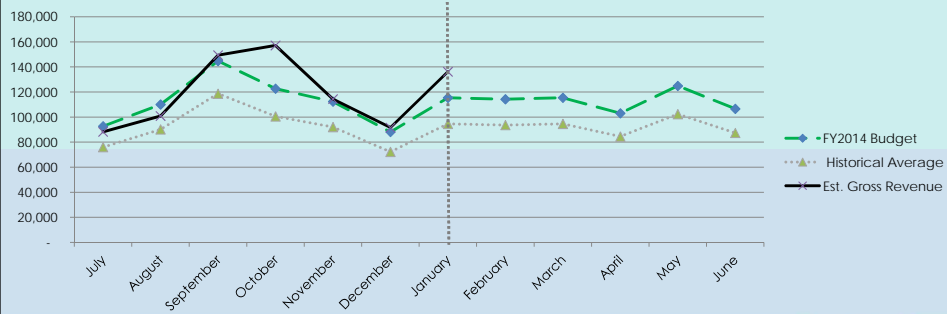
\$838,000

↑ 7%

Forecasted\*

\$786,000

\* Forecasted revenue for the full FY 13/14 is \$1,350,000



Questions ?