



I-680 Northbound (NB) Express Lane Project from SR 237 to SR 84

- ❖ Environmental Clearance / Project Approval - July 2015
- ❖ Phased Construction Approach
- ❖ Initial phase of construction (Phase 1): South of Auto Mall to SR 84

I-680 SSCLJPA Meeting – July 11, 2016



1



I-680 NB Phase 1A Project

- ❖ Modified version of Phase 1
- ❖ Reduced lane and shoulder widths
- ❖ Reduced number of bridge modifications and retaining walls
- ❖ No impacts to creeks or riparian areas
- ❖ Minor right-of-way acquisition
- ❖ No utility relocation

I-680 SSCLJPA Meeting – July 11, 2016



2

Key Features of I-680 NB Phase 1A Project

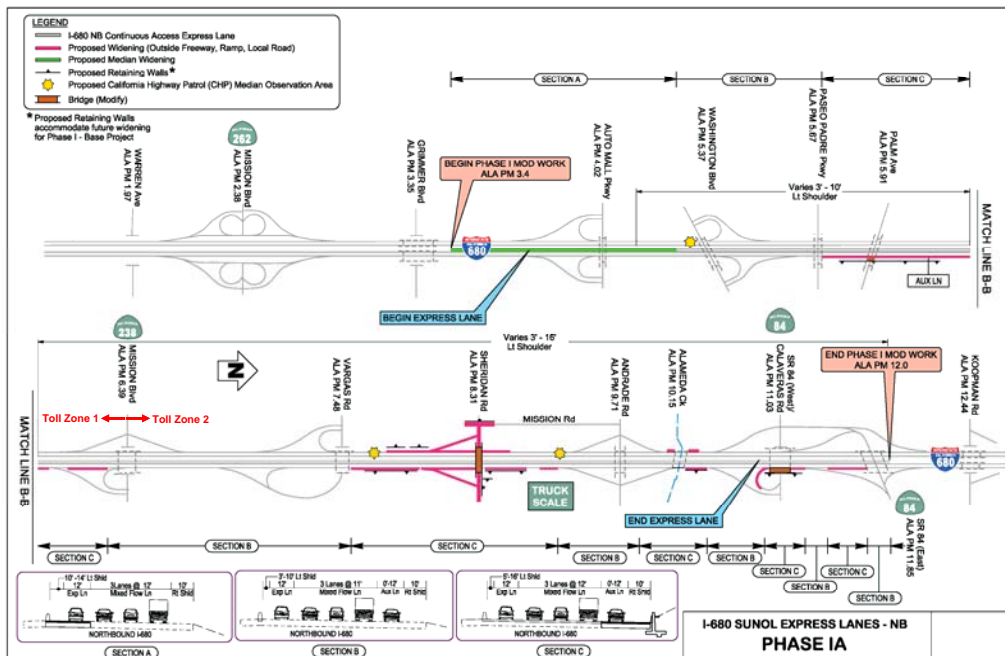
- ❖ Add new continuous-access express lane on northbound I-680 from south of Auto Mall Parkway to SR 84 (Calaveras Road)
- ❖ Widen roadway in the median and to the outside
- ❖ Construct new auxiliary lane from Washington Boulevard on-ramp to SR 238 (Mission Boulevard) off-ramp
- ❖ Modify 3 bridges (Sheridan Road, Palm Avenue, Calaveras Road)
- ❖ Construct 9 retaining walls to accommodate widening
- ❖ Pavement rehabilitation from Auto Mall Parkway to Koopman Road
- ❖ Install electronic tolling equipment and signage
- ❖ Install enhanced lighting and other safety features

I-680 SSCLJPA Meeting – July 11, 2016



3

I-680 NB Phase 1A Project



I-680 SSCLJPA Meeting – July 11, 2016



4



I-680 Southbound (SB) Sunol Express Lane

- ❖ Convert SB express lane to continuous access from SR262 (Mission) to SR84
- ❖ Integrate the converted express lane system with existing SB toll system, south of SR262
- ❖ Create a single toll operation for NB & SB