



ALAMEDA COUNTY TRANSPORTATION COMMISSION

Capital Program Update

Transforming the Region

A presentation to the Programs and Projects Committee



Presented by Trinity Nguyen, Director of Project Delivery
October 10, 2016

Commitment to Delivery

CAPITAL PROGRAM UPDATE

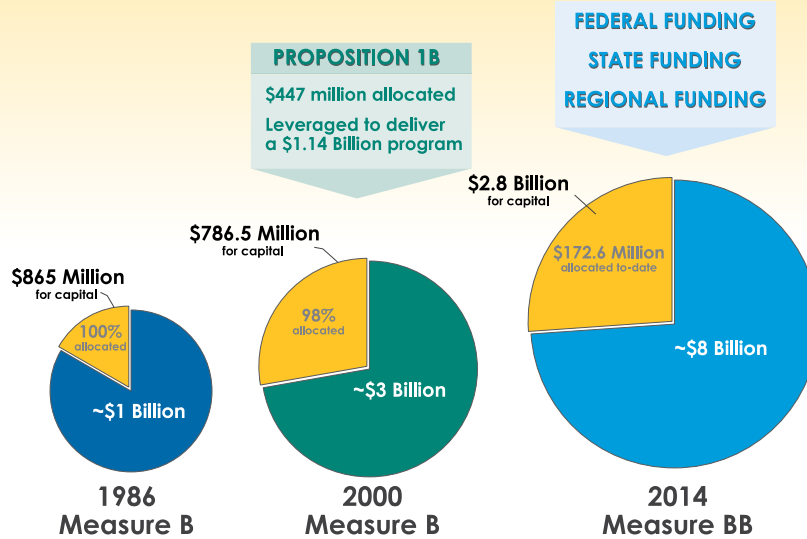
- Alameda CTC is a **trailblazer**
 - An agency of firsts
 - Express lanes – first in northern California
 - Integrated Corridor Mobility offering the most comprehensive intelligent transportation systems in the state
 - Improve safety
 - Inform drivers
 - Improve traffic flow
- **Over the past two decades, Alameda CTC has delivered a number of significant projects and programs**




2

Capital Program Funding Overview

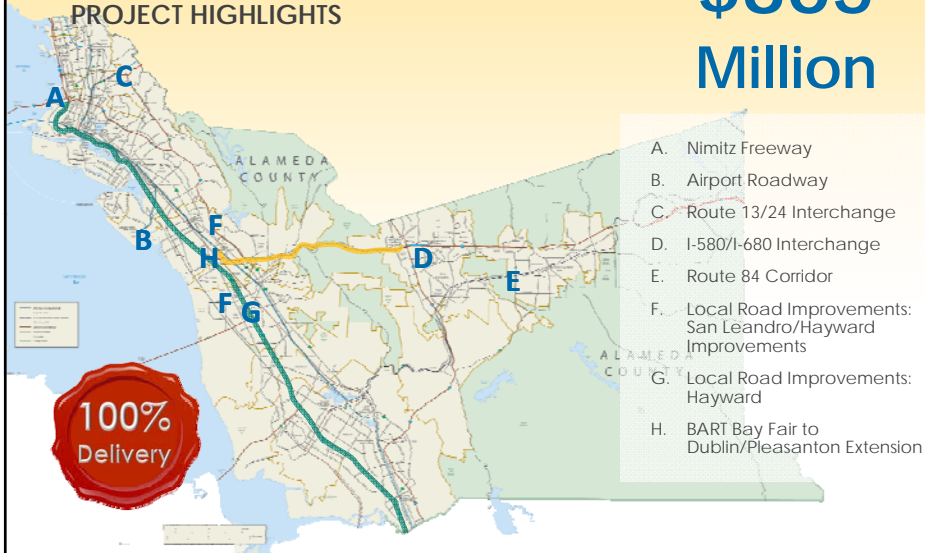
PROMISES MADE ○ PROMISES KEPT ○ PROMISES TO FULFILL

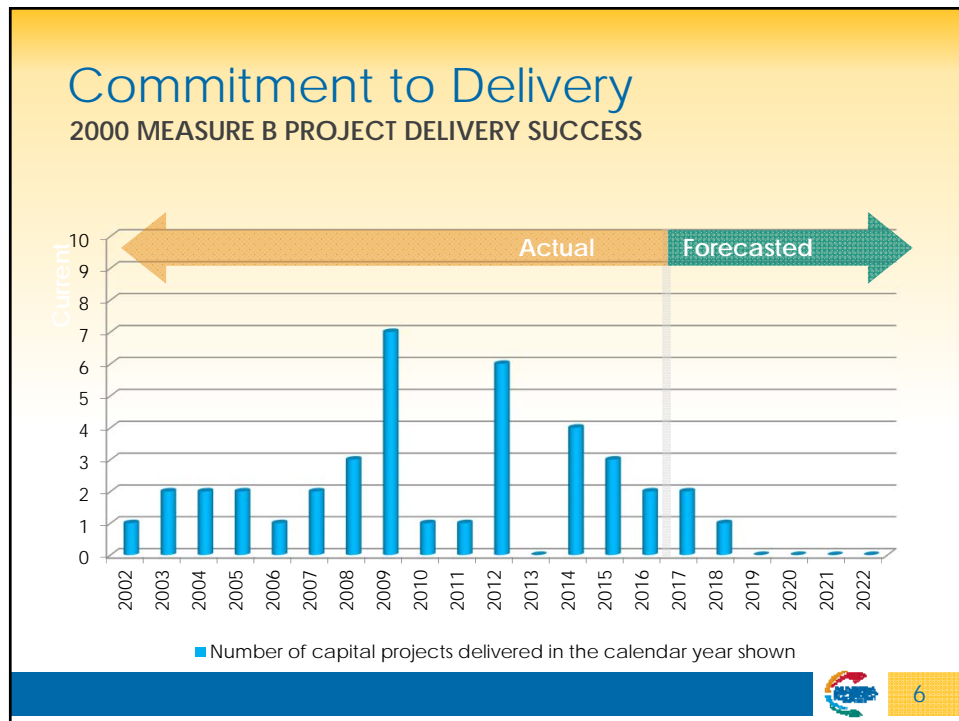
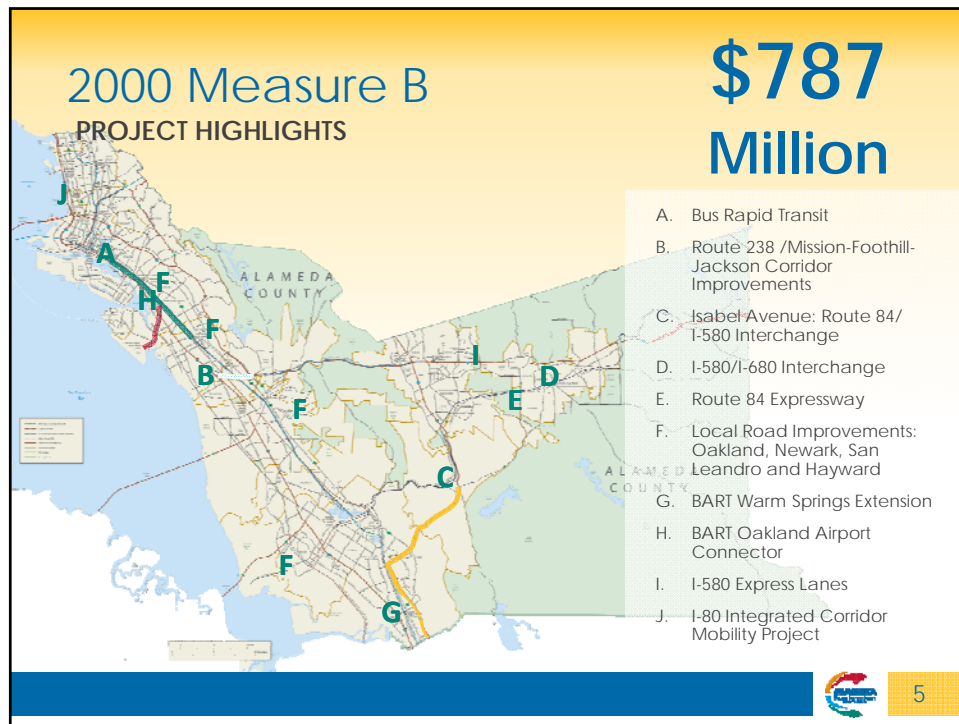


1986 Measure B

PROJECT HIGHLIGHTS

\$865 Million

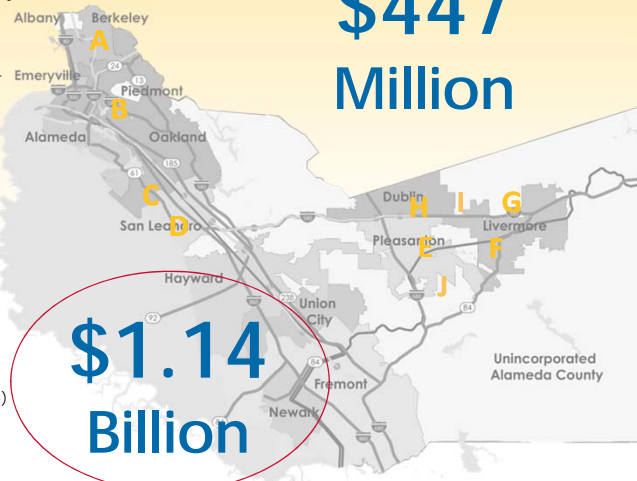




Proposition 1B Highway Program

**\$447
Million**

- A I-80 Integrated Corridor Mobility
- B** I-880 North Safety and Operational Improvements
- C I-880 Southbound HOV Lane – North Segment
- D I-880 Southbound HOV Lane Extension – Hegenberger to Marina Corridor
- E I-580 Eastbound HOV Lane – Segments 1 & 2
- F I-580 Eastbound HOV Lane – Segments 3 [AUX]
- G I-580 Westbound HOV Lane – East Segment
- H I-580 Westbound HOV Lane – West Segment
- I I-580/Isabel Avenue (Route 84) Interchange
- J** Route 84 Expressway Widening Corridor



**\$1.14
Billion**



7

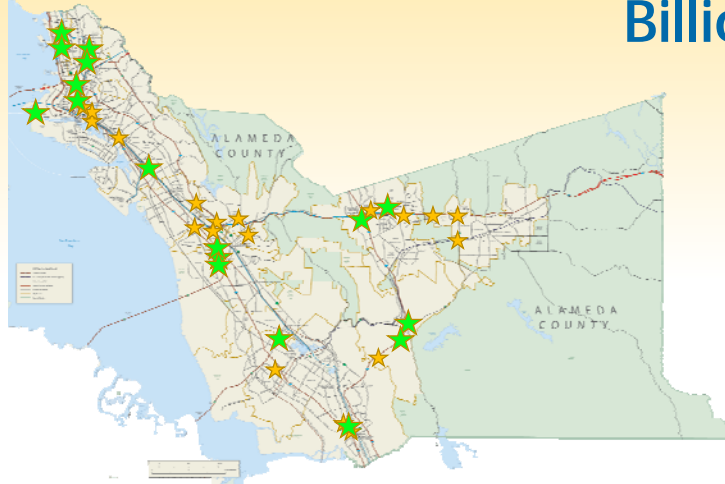
State Route 84 Expressway



8

Capital Program PROJECT MANAGEMENT AT WORK

**\$1.9
Billion**



★ Active Measure B capital projects

★ Measure BB CDPD project additions



11

Commitment to Delivery MILESTONES COMPLETED SINCE JANUARY 2016

EAST BAY GREENWAY
(Coliseum BART to 85th Avenue - Segment 7A)
Project No. 1379.001



IRON HORSE TRANSIT ROUTE
Project No. 1195.000



TELEGRAPH AVENUE CORRIDOR BUS RAPID TRANSIT
Project No. 1193.001



2016

FEB

MAR

APR

MAY

JUN

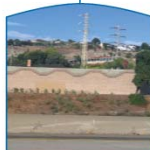
JUL

AUG

SEP



I-580 EXPRESS LANES PROJECT
Project Nos. 1373.003 and 1373.001



I-580 SOUNDWALL LANDSCAPE PROJECT
Project No. 1384.001

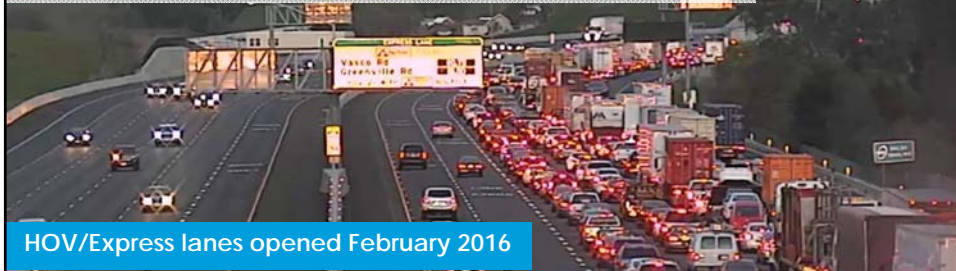


DOWNTOWN OAKLAND STREETSCAPE IMPROVEMENT
Project No. 1190.000



I-80 INTEGRATED CORRIDOR MOBILITY (ICM) PROJECT
Project No. 1387.000-006

I-580 HOV/Express Lanes Projects



HOV/Express lanes opened February 2016

- Eastbound HOV/Auxiliary Lane
- Westbound HOV Lane
- Eastbound/Westbound Express Lane Infrastructure
- Civil construction and 220 lane miles of paving completed in fall 2015



13



Downtown Oakland Streetscape Latham Square



14



Program Delivery

INNOVATION AND TECHNOLOGY



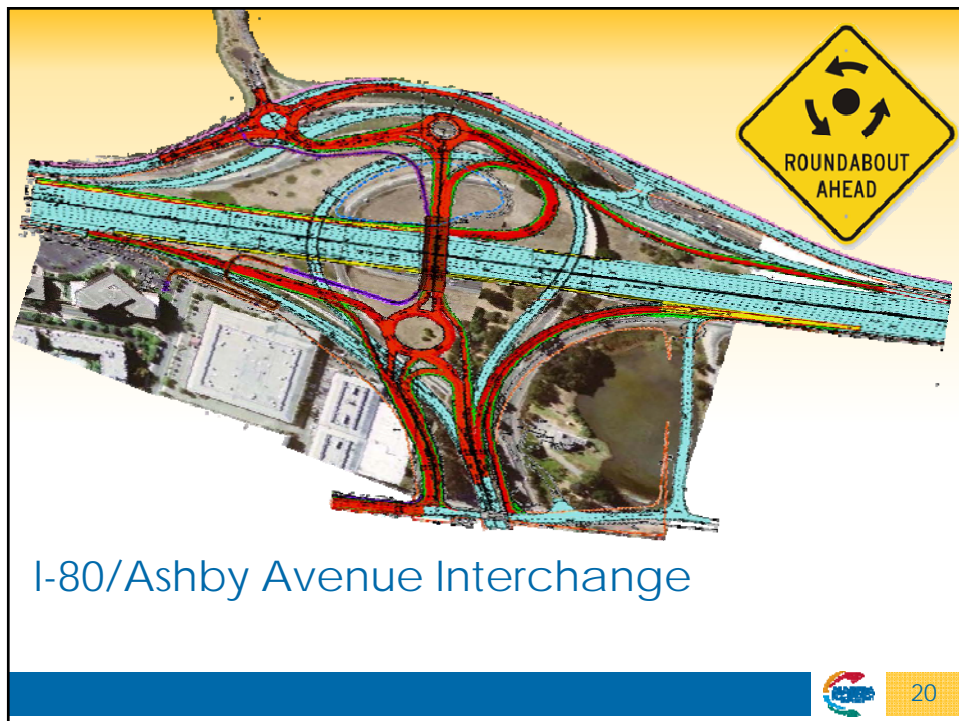
Roundabouts...and their potential benefits

- Traffic safety
- Operational performance
- Traffic calming
- Pedestrian safety
- Access management
- Aesthetics



17





Capital Program

DELIVERING INNOVATION AND TECHNOLOGY



Integrated technology to enhance communications

- San Pablo Avenue SMART Corridor
- Webster Street SMART Corridor
- I-580 high-occupancy express lanes
- I-80 Integrated Corridor Mobility
- I-680 high-occupancy express lanes
- Port Improvements





21



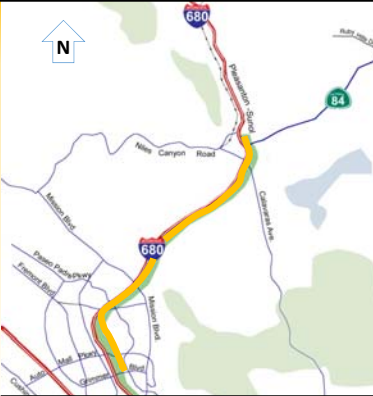


Capital Program

DELIVERING TECHNOLOGY

I-680 Express Lanes



NORTHBOUND					
3'-10" Shld	12" New Exp Lane	11'-12"	11'-12"	11'-12" Aux Lane	10" Shld
	↑	↑	↑	↑	

Section at Washington on-ramp to SR 238 (Mission) off-ramp

24

I-680 SB Sunol Express Lane Conversion

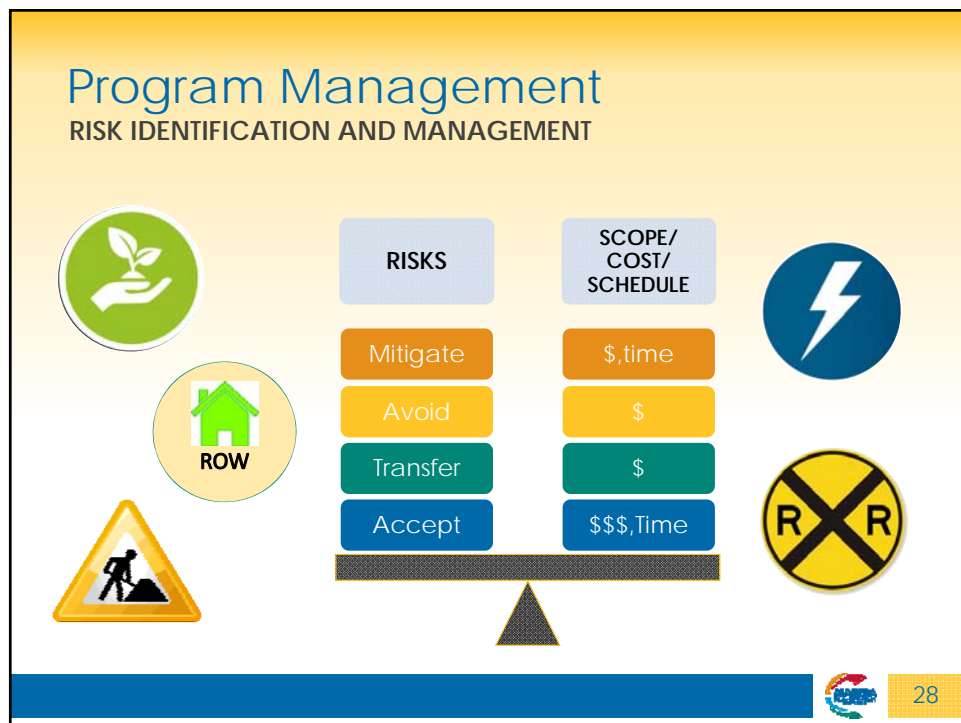
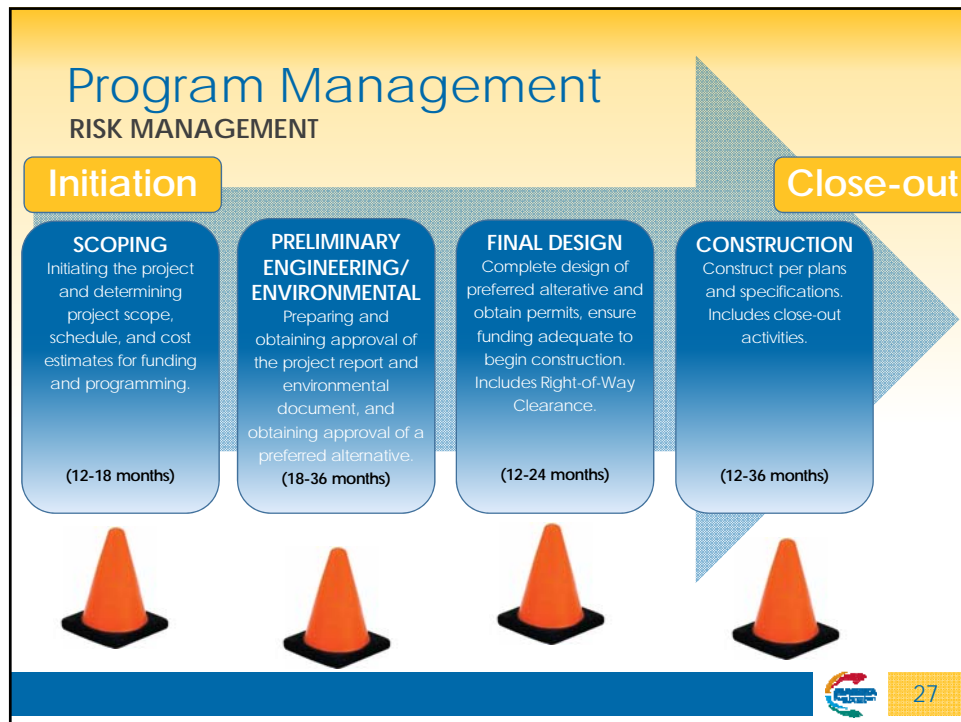


25

Capital Program DELIVERING TECHNOLOGY



7th Street Grade Separation and Port Arterial Improvements



East Bay Greenway: Lake Merritt to South Hayward

**\$6.5
Million**

AVAILABLE FUNDING



- 16-mile bicycle and pedestrian facility
- Connect seven BART stations
- Environmental is underway



29

Route 84/Pigeon Pass to I-680

**\$126
Million**

AVAILABLE FUNDING



- **2 lanes** in each direction
- **Frontage roads** to connect driveways and local roads with the new signal intersection
- Concrete **safety barriers** and retaining walls
- **Wildlife movement** features
- Improvements on I-680 and at SR 84 and I-680 interchange



30

I-880 to Mission Blvd East-West Connector



**\$126
Million**

AVAILABLE FUNDING

- Improve connectivity between I-880 and Route 238.
- Widen existing roadways and construct a new roadway segment
- Grade separate roadway under BART and UPRR tracks
- Intersection improvements



31

Oakland/Alameda Freeway Access

- Enhance or replace access to and from the freeways in the area of the existing Broadway and Jackson Street interchanges
- Relieve regional access, traffic congestion and highway operations on mainline I-880
- Address and ensure multimodal access



**\$85.6
Million**

AVAILABLE FUNDING



32



**\$85.6
Million**

- HOV/Express Lane on northbound I-680 from (Auto Mall Parkway to Route 84)
- New auxiliary lane from Washington on-ramp to Route 238 (Mission) off-ramp
- Modify 3 bridges
- Final design is underway



I-680 Sunol Express Lanes - Northbound (Auto Mall Parkway to SR84)

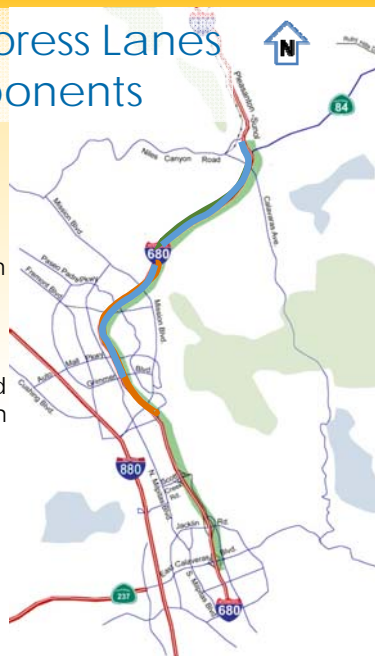


33

I-680 Sunol Express Lanes Project Components

Southbound Conversion

- ❖ Southbound Conversion to continuous access from SR262 (Mission) to SR84
- ❖ Integrate the converted express lane system with existing SB toll system, south of SR262
- ❖ Create a single toll operation for NB and SB



Northbound Phase 1

- ❖ South of Auto Mall to SR 84
- ❖ 8.2 miles of HOV/HOT lane

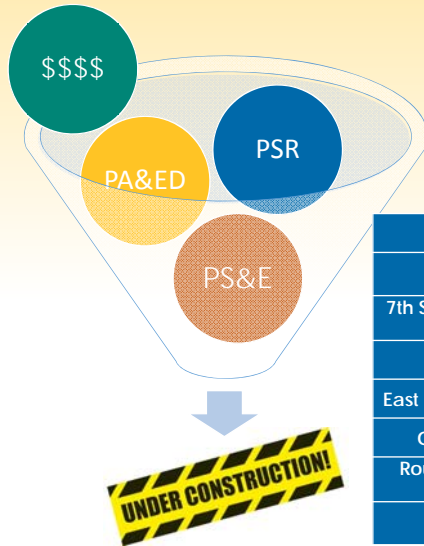
Caltrans Rehab

- ❖ Grimmer to Koopman



34

Promises to Fulfill in 2017



I-580 Corridor/BART to Livermore (PA&ED)
I-80 Ashby Interchange Improvements (PA&ED)
7th Street Grade Separation and Port Arterial Improvements (PA&ED)
I-80 Gilman Interchange Improvements (PA&ED)
East Bay Greenway - Lake Merritt to South Hayward (PA&ED)
Oakland/Alameda Freeway Access Project (PA&ED)
Route 84 - Pigeon Pass to I-680 & SR84/I-680 Interchange (PA&ED)
I-680 Express Lane Project (PS&E)



35