



ALAMEDA COUNTY TRANSPORTATION COMMISSION

Capital Program Update

Construction Ahead

A presentation to the Programs and Projects Committee



Presented by Trinity Nguyen, Director of Project Delivery
February 13, 2017

CAPITAL PROGRAM

UPCOMING ADVERTISEMENTS/AWARDS

\$260

Million



- A. Hesperian Boulevard Corridor Improvement (A Street – I-880)
- B. Dublin Widening, WB from 2 to 3 Lanes (Sierra Ct-Dougherty Rd)
- C. Downtown Oakland Streetscape Improvement
- D. Warm Springs BART - West Side Access
- E. Mission Boulevard Phases 2 and 3 (Complete Streets)
- F. Oakland Army Base Roadway Infrastructure (Truck Parking)
- G. 14th Avenue Streetscape
- H. I-680 Sunol Express Lanes

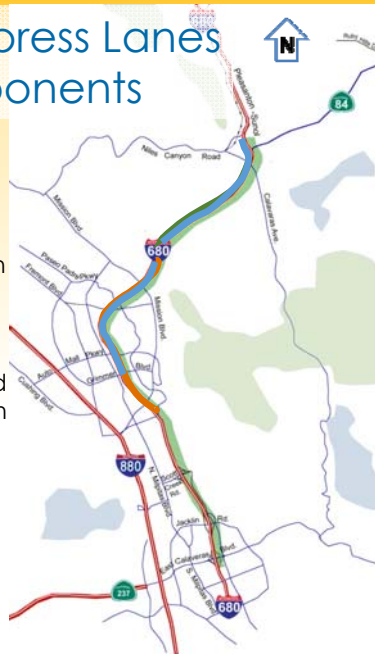


2

I-680 Sunol Express Lanes Project Components

Southbound Conversion

- ❖ Southbound Conversion to continuous access from SR262 (Mission) to SR84
- ❖ Integrate the converted express lane system with existing SB toll system, south of SR262
- ❖ Create a single toll operation for NB and SB



Northbound Phase 1

- ❖ South of Auto Mall to SR 84
- ❖ 8.2 miles of HOV/HOT lane

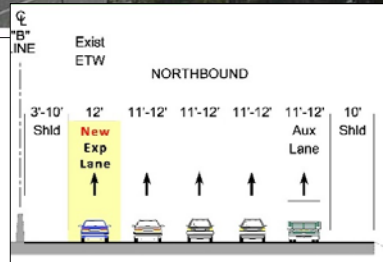
Caltrans Rehab

- ❖ Grimmer to Koopman



3

I-680 Sunol Express Lanes



I-580 Express Lanes Open Access



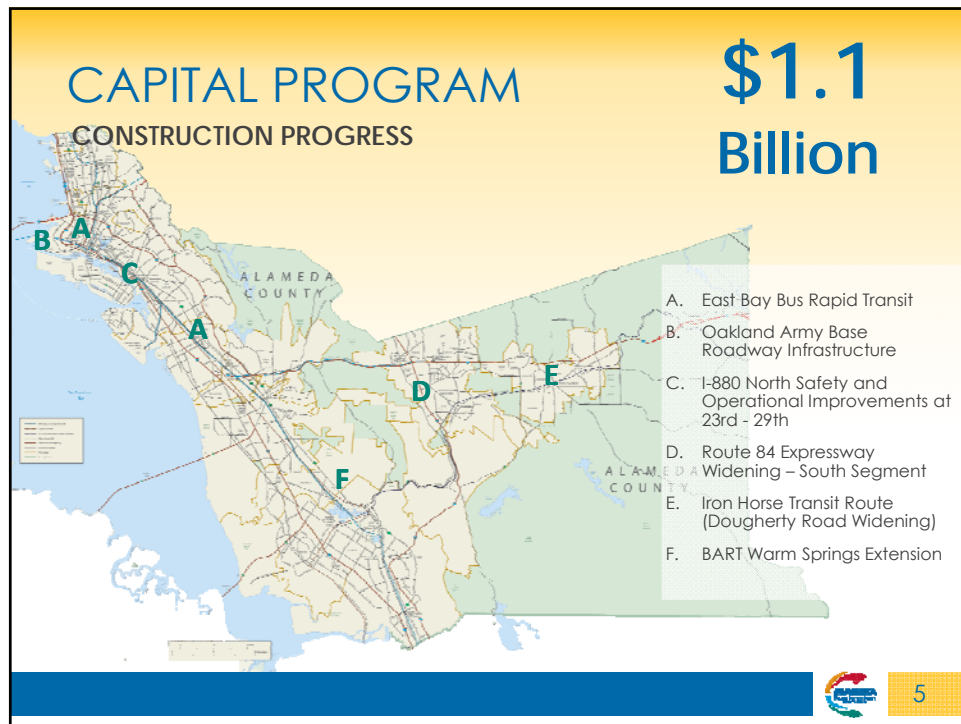
ROW



I-680 Southbound Express Lanes Limited Access



4



East Bay Bus Rapid Transit



82nd St. south-west corner of International Blvd.
Curb ramp, sidewalk, and gutter construction.



86th St. south-west corner of International Blvd.
Curb ramp, sidewalk, gutter, and signal pole
foundation construction.



7

Oakland Army Base



8

Oakland Army Base – Roadway Infrastructure



Maritime Roadway Construction



Wake Avenue Rail Crossing



9

Dougherty Road Widening

Dougherty Road Improvements



Existing Configuration



Proposed Configuration



10

Dougherty Road Widening



After storm conditions



11

State Route 84 Expressway



12

State Route 84 Expressway



Vallecitos Road – Storm Damage



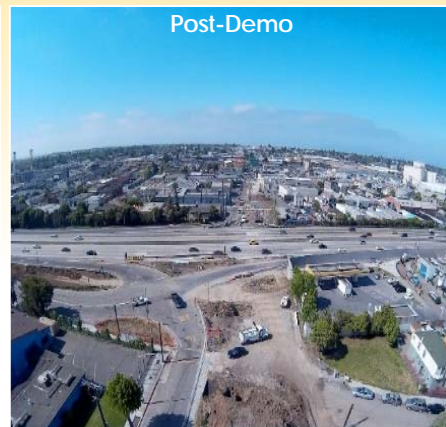
13

I-880 North Safety and Operational Improvement at 23rd and 29th Avenues

Pre-Demo



Post-Demo



14

I-880 North Safety and Operational Improvement at 23rd and 29th Avenues



15



BART to Warm Springs Extension

BART to Warm Springs Extension



Photovoltaic (PV) or Solar Panels at the Warm Springs / South Fremont Station



17

Risk Management



18