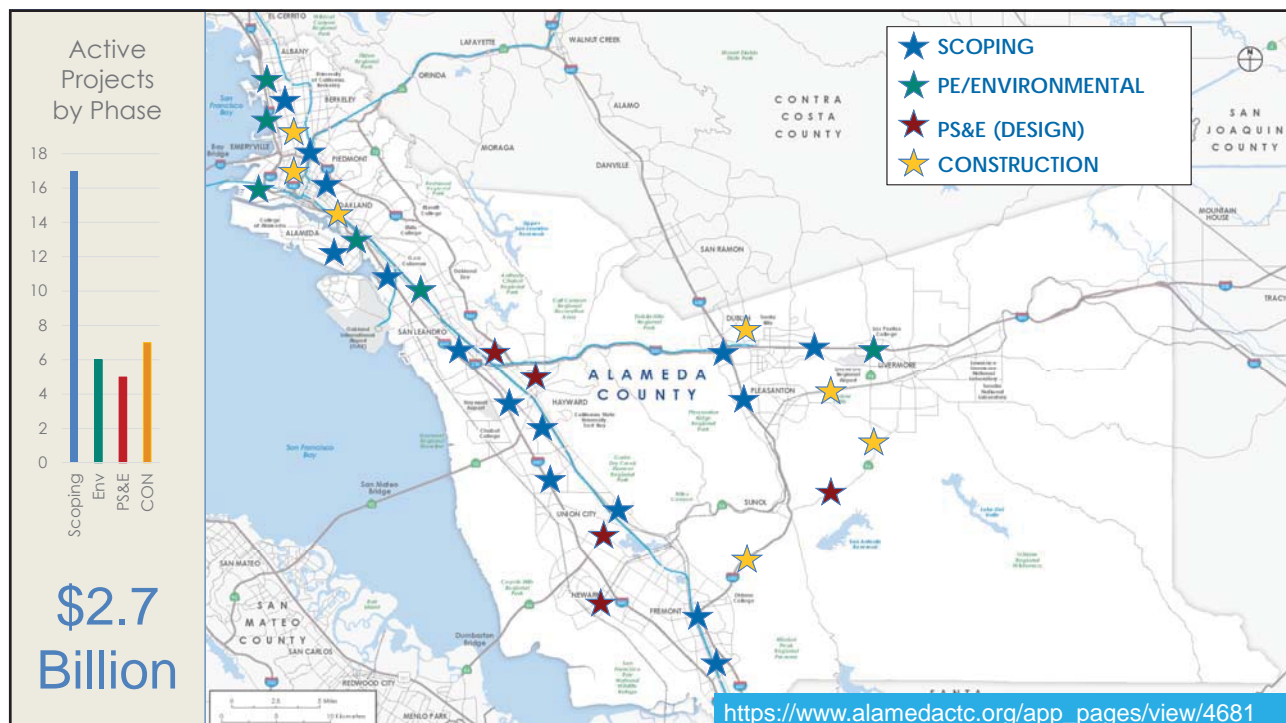
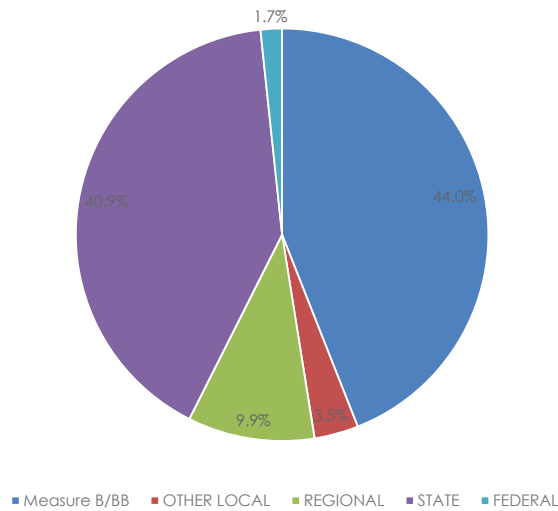


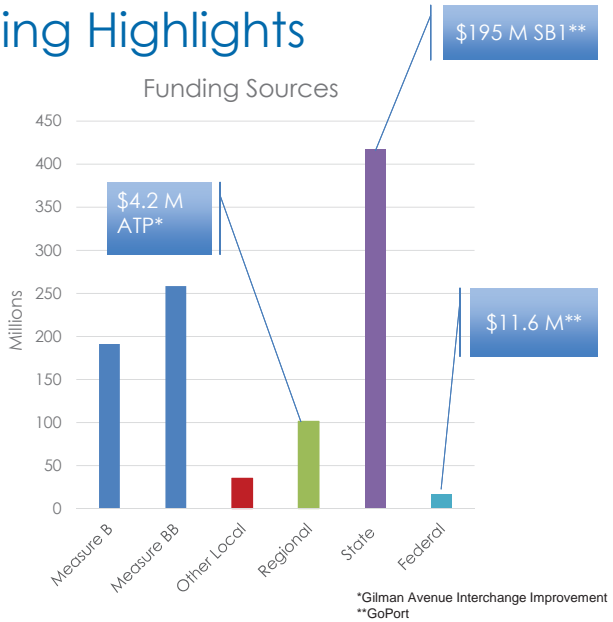
July 9, 2018



## Fiscal Year 2017/18 Funding Highlights



Alameda CTC PM projects: \$1 B

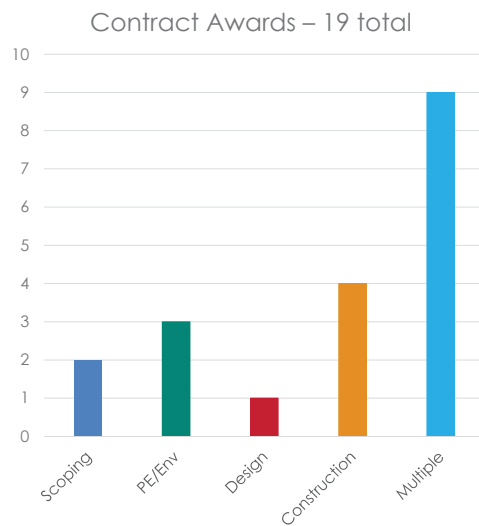
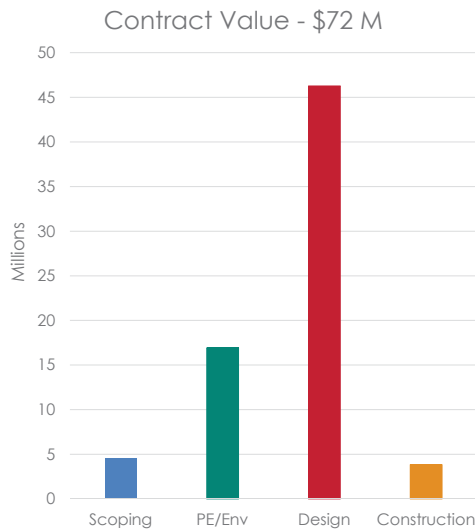


PLAN

FUND

DELIVER

## Fiscal Year 2017/18 Professional Services Highlights



PLAN

FUND

DELIVER

## Fiscal Year 2017/18 Delivery Highlights

Environmental Phase

- East Bay Greenway – Lake Merritt BART to South Hayward BART
  - CEQA: Initial Study/Mitigated Negative Declaration, March 2018
- SR-84 Widening from south of Ruby Hill Drive to I-680 and SR-84/I-680 Interchange Improvements
  - CEQA/NEPA: Environmental Impact Report/Environmental Assessment with Finding of No Significant Impact, May 2018
- BART to Livermore Extension, Phase 1
  - CEQA: Environmental Impact Report, June 2018



PLAN

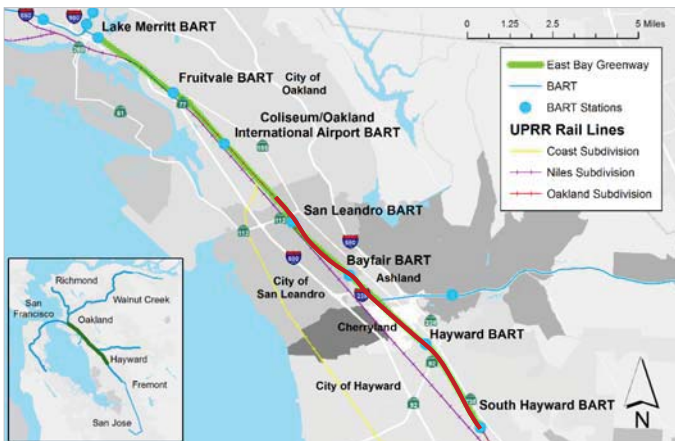
FUND

DELIVER



## East Bay Greenway: Lake Merritt to South Hayward BART

Environmental Phase



Note: All maps and figures for illustrative purposes only.

### Project Description

- The project proposes to:
- Construct a 16-mile bicycle and pedestrian facility
  - Connect seven BART stations

Environmental for this project is underway. NEPA target Fall 2018.

Total Project  
Cost

**\$190\***  
Million

Estimated  
Available

**\$6.5**  
Million

Funding  
Need

**SB1 ATP**

\*R/W costs not included.

PLAN

FUND

DELIVER



## SR-84 Widening from south of Ruby Hill Drive to I-680 and SR-84/I-680 Interchange Improvements

PS&E (DESIGN)



I-680/SR-84 Interchange



SR-84 looking eastbound near Ruby Hill



SR-84 looking westbound near Ruby Hill

### Environmental Document MAY 2018



Note: All maps and figures for illustrative purposes only.

### Project Description

Conformation of SR-84 to expressway standards between south of Ruby Hill Drive and the Interstate 680 (I-680) interchange in southern Alameda County:

- Interchange ramp modifications
- Auxiliary lanes
- Extension of existing southbound I-680 high-occupancy vehicle (HOV)/express lane to the north

**Total Project Cost: \$220 M**

#### SCHEDULE BY PHASE

	Begin	End
Environmental	Spring 2015	Summer 2018
Public Meetings/ Stakeholder Engagement	Spring 2015	Fall 2017
CEQA Clearance	Spring 2015	May 2018
NEPA Clearance	Spring 2015	Summer 2018
Final Design	Summer 2018	Summer 2020
Right-of-Way	Summer 2018	Summer 2020
Construction	Winter 2021	Fall 2023

PLAN

FUND

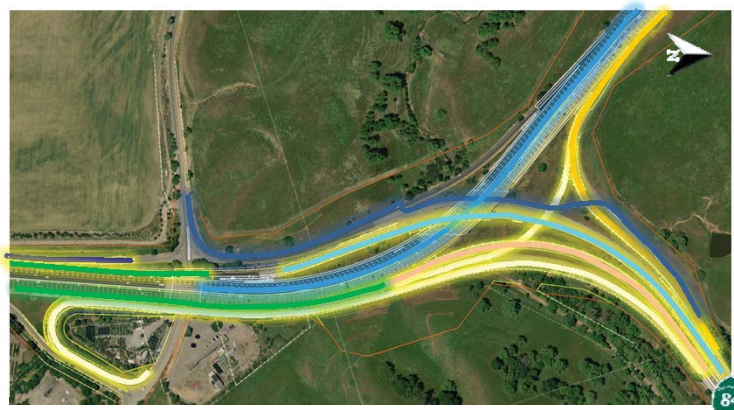
DELIVER



## SR-84 Widening from south of Ruby Hill Drive to I-680 and SR-84/I-680 Interchange Improvements

- Calaveras Road to NB I-680 flyover and EB SR-84 new connectors
- Realign WB SR-84 to NB I-680 connector
- NB I-680 to EB SR-84 connector - realign and widen to two-lane exit
- WB SR-84 to SB I-680 connector - add HOV preferential lane (widen to three lanes)
- Longer auxiliary lanes on I-680
- Separate Paloma Way to SB I-680 on ramp from WB SR-84 on ramp
- Extension of existing southbound I-680 HOV/express lane to the north
- Class I (separated)/II (striped) bikeway connection across I-680

\$85 M from RM3  
Fully Funded  
Construction Begin 2021



Note: All maps and figures for illustrative purposes only.

PLAN

FUND

DELIVER

## Fiscal Year 2017/18 Delivery Highlights

Construction Phase

Project	Sponsor	Capital Estimate
Oakland Army Base Infrastructure Improvements – Truck Parking	City of Oakland	\$5 M
Mission Boulevard Phases 2* and 3 (Complete Streets)	City of Hayward	\$25 M*
I-680 Sunol Express Lanes - Phase 1	Alameda CTC	\$122 M
Warm Springs BART West Access Bridge	City of Fremont	\$30 M

**\$182  
Million  
New  
Construction  
Capital**



PLAN

FUND

DELIVER



### Oakland Army Base Infrastructure Improvements – Truck Parking

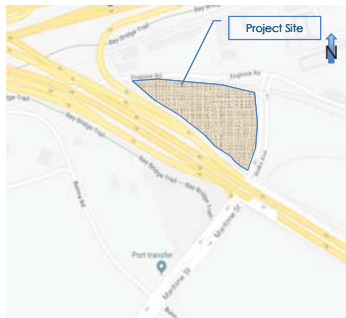
Construction



Ancillary Maritime Support Services Truck Parking Area Paving Operation.



Construction  
Begin- January 2018  
Complete- July 2018



Note: All maps and figures for illustrative purposes only.

#### Project Description

The Truck Parking component of the Oakland Army Base (OAB) Public Improvement Project will provide needed Trucking Facilities mandated under the Bay Conservation and Development Commission Sea Port Plan to support ongoing operations of the Port of Oakland and the new Trade and Logistics uses at the former OAB. Trucking facilities will be accommodated on 15-acres of City owned land at the former OAB. Development of the Facility is part of overall City of Oakland and Port of Oakland Outer Harbor Intermodal Terminal Master Plan and serves as a mitigation to help keep trucks serving Port Goods Movement operations from parking in the local and surrounding neighborhood. Overall the effort will also contribute to improving the overall air quality of the area by helping to facilitate California Air Resources Board compliance for all trucks utilizing the facility and serving Port operations.

**Total Construction Cost: \$5 M**

PLAN

FUND

DELIVER





## Mission Boulevard Phase 2 & Phase 3 Complete Streets

Construction



SECTION C-C

Construction  
Phase 2\* - MARCH 2018  
Phase 3 - SUMMER 2019



Note: All maps and figures for illustrative purposes only.

### Project Description

The City of Hayward is making major improvements to Mission Boulevard as part of Mission Boulevard Corridor Improvement Project. Phase 1 was completed in March, 2013. Phase 2 will make improvements to Mission Boulevard from Industrial Parkway south to the City limit near Blanche Street. Phase 3 will make improvements to Mission Boulevard from A Street north to the City limit near Rose Street. Phase 3 is currently in the design phase. The project takes a complete streets approach with the goal of enhancing the road for all users.

Proposed improvements include:

- New sidewalks, bike facilities, enhanced crosswalks and wheelchair ramps to improve pedestrian/bicyclist safety and convenience
- Adaptive signal technologies
- New roadway pavement

Total Construction Cost: \$25 M\*

\*Phase 2 only.

PLAN

FUND

DELIVER



## I-680 Sunol Express Lanes – Phase 1

Construction

### Southbound Express Lane

- Access conversion of existing I-680 express lane from SR-262 to SR-84
- Upgrade existing toll system and pavement for a near continuous access express lane facility

Total Project Cost  
\$205.8 Million

Measure B/BB  
\$147.5 Million

State  
\$58.3 Million



### Northbound: HOV/Express

- Phase 1:  
9-mile HOV/HOT lane from South of Auto Mall Parkway to SR-84

### CALTRANS Rehab

- Grimmer to Koopman



■ = Rehab and NB new lane  
■ = SB Access Conversion

PLAN

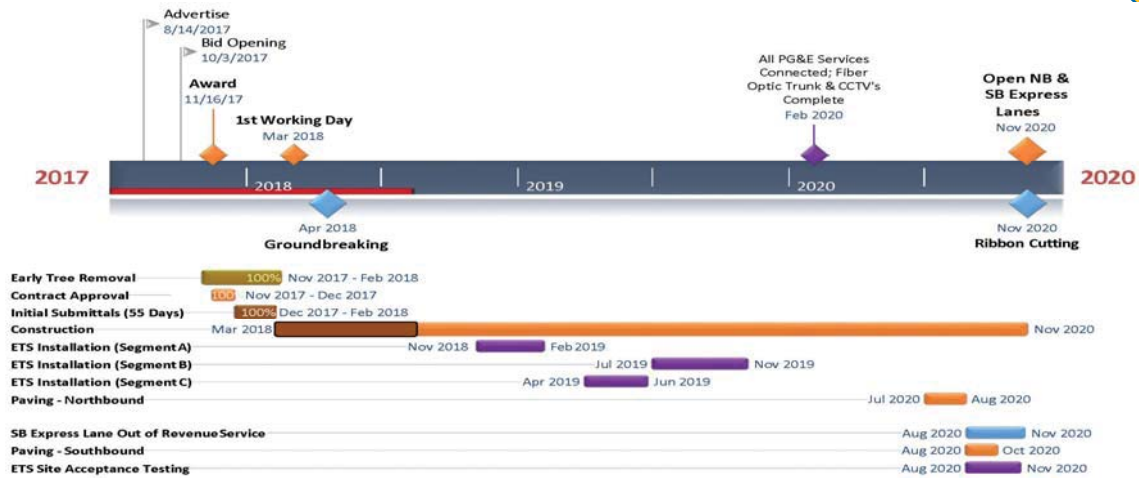
FUND

DELIVER



## I-680 Sunol Express Lanes – Phase 1

Construction



July 2018 Construction Update

PLAN

FUND

DELIVER



## I-680 Sunol Express Lanes – Phase 1

Construction



New concrete barrier near Koopman Road

Calaveras Road Separation bridge widening

PLAN

FUND

DELIVER



## I-680 Sunol Express Lanes – Phase 1

Construction



Sheridan Road Overcrossing Abutment 1 Construction



Retaining Wall Construction along I-680 NB near Palm Avenue

PLAN

FUND

DELIVER



## I-680 Sunol Express Lanes – Phase 1

Construction



Pavement Widening

PLAN

FUND

DELIVER





## Warm Springs BART West Side Access Bridge & Plaza

CONSTRUCTION



Bridge and plaza renderings.



Construction  
SUMMER 2018



West Access  
Bridge & Plaza

Note: All maps and figures for illustrative purposes only.

### Project Description

The new BART Warm Springs/South Fremont station opened on March 25, 2017. The overall plan for the station includes access from west side of the concourse. The Project is intended to provide the pedestrian/bicycle connection required to enhance multi-modal connectivity between the station and the properties west of the station, including Tesla, Thermo Fisher, and other major employers in the City of Fremont.

Proposed improvements include:

- Construction of a pedestrian/bicycle bridge over the existing UPRR mainline tracks and UPRR spur track
- A one-acre entry plaza
- A landing area for the bridge's staircase, escalators, and elevator
- A public space that will provide a setting for community gatherings and outdoor activities

**Total Construction Cost: \$30M**

PLAN

FUND

DELIVER

## Fiscal Year 2018/19 Construction Awards

Construction Phase

Project	Sponsor	Capital Estimate	Target Award
Dublin Widening, WB from 2 to 3 Lanes (Sierra Ct-Dougherty Rd)	City of Dublin	\$8 M	July 2018
Hesperian Boulevard Corridor Improvement (A Street – I-880)	Alameda County	\$30 M	Spring/ Summer 2019
Dumbarton Corridor Improvements (Central Avenue Overpass)	City of Newark	\$33 M	Summer 2019
GoPort Program (Various contracts for Freight Intelligent Transportation Systems)	Alameda CTC	\$15 M	Spring/ Summer 2019

**\$86 Million New Construction Capital**



PLAN

FUND

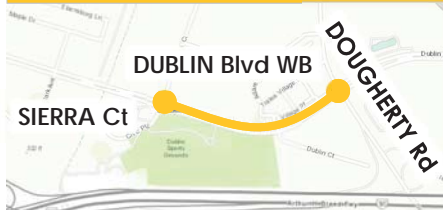
DELIVER



## Dublin Boulevard Widening (Sierra Court – Dougherty Road)

Construction

Construction  
SUMMER 2018



Note: All maps and figures  
for illustrative purposes  
only.



Overhead Utility  
Relocated Underground

### Project Description

Located in the City of Dublin, this project will widen Dublin Boulevard from Sierra Court to Dublin Court in the westbound direction from two to three lanes. As part of this project, the City will underground the overhead utilities along the segment. The addition of this third lane will make this segment uniform with the rest of Dublin Boulevard. The expansion of this arterial will alleviate congestion and address current traffic conflicts.

Proposed improvements includes:

- Class II bike lanes
- Upgrading all signals in this segment including enhanced detection for bicyclists in left turn lanes
- Asphalt resurfacing
- Landscaping, streetscape improvements, median islands
- Improved driveway and sidewalk design for better ADA access and offsite improvements

Capital Estimate: \$8.0 M

PLAN

FUND

DELIVER

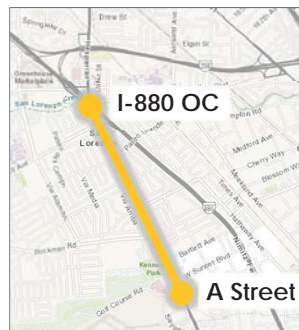


## Hesperian Boulevard Corridor Improvements

PS&E (DESIGN)



Construction Anticipated  
SUMMER 2019



Note: All maps and figures for illustrative purposes only.

### Project Description

The Hesperian Boulevard Corridor Improvement Project, from A Street to the I-880 overcrossing, improves traffic safety and congestion relief while further establishing a livable community that benefit motorists, pedestrians, bicyclists, and the San Lorenzo commercial corridor. The Project is currently in the PS&E phase, anticipated to be complete in January 2019.

Proposed improvements include:

- Wider, decorative sidewalks areas with curbs and gutters, pedestrian and transit amenities and lighting
- Class II bicycle lanes
- Landscaping along the street and median
- Intersection improvements including upgraded traffic signals, ADA compliant pedestrian ramps, bulb outs and adaptive signal technologies
- Resurface roadway pavement

Total Construction Cost: \$30 M

PLAN

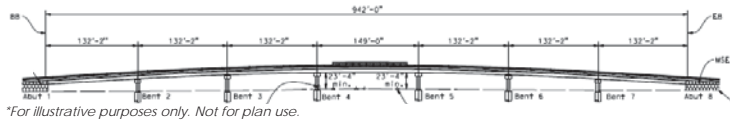
FUND

DELIVER

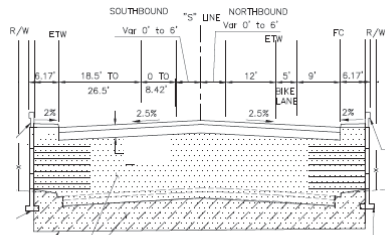


## Dumbarton Corridor Improvements (Central Avenue Overpass)

PS&E (DESIGN)



BRIDGE ELEVATION



TYPICAL CROSS  
SECTION

Construction Anticipated  
SUMMER 2019



### Project Description

The City of Newark the Sponsor of the Project, which is a portion of the Dumbarton Corridor Improvements Project. Central Avenue provides a critical east-west route through the City of Newark and also serves as a bypass for regional traffic using Route 84 and Interstate 880 to traverse the Dumbarton Bridge corridor. The Project will eliminate a significant impediment to the flow of traffic through the project area and relieve congestion in the corridor.

Proposed improvements will:

- Construct a four-lane grade separation
- Include sidewalks and bicycle lanes
- Enhance vehicular, bicycle and pedestrian safety
- Improved emergency response times
- Promote transit usage to, from, and around the City's planned transit oriented center

Total Construction Cost: \$32.5M

PLAN

FUND

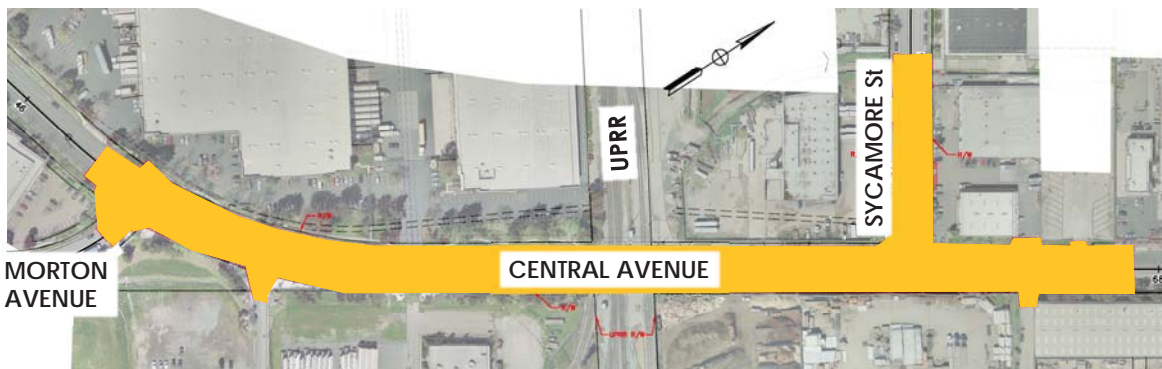
DELIVER



## Dumbarton Corridor Improvements (Central Avenue Overpass)

PS&E (DESIGN)

Footprint of Improvements



PLAN

FUND

DELIVER



## Port of Oakland: 7th Street Grade Separations and Arterial Improvements

Environmental Phase



Total Project Cost

**\$515 Million**

External Funds to Date: \$207 Million

### Project Description

This project consists of four components:

- **7th Street Grade Separation (West Segment):** Replace the existing triangle area (Maritime Street, 7th Street, and Navy Road) with an elevated intersection at 7th Street and Maritime Street to improve the access and minimize conflicts between rail, vehicles, pedestrians and bicyclists.
- **7th Street Grade Separation (East Segment):** Reconstruct existing railroad underpass between I-880 and Maritime Street to increase clearance for trucks and improve shared pedestrian/ bicycle pathway.
- **Freight Intelligent Transportation Systems (FITS) and Technology Master Plan:** Apply ITS, signal systems along W. Grand Avenue, Maritime Street, 7th Street, and Middle Harbor Road, and other technologies to cost-effectively manage truck arrivals and improve incident response.
- **Port Utility Relocation:** Relocate and upgrade utilities in support of the Oakland Army Base Master Plan development and the roadway improvement along 7th Street and Maritime Street.

**FITS (First phases): \$15 M**

Note: All maps and figures for illustrative purposes only.

PLAN

FUND

DELIVER

## Fiscal Year 2018/19 Delivery Targets

Construction Phase

Project	Sponsor	Total Project Cost	Target Completion
Oakland Army Base Infrastructure Improvements – Truck Parking	City of Oakland	\$5 M	July 2018
Oakland Army Base Roadway Infrastructure	Alameda CTC	\$261 M	July 2018
Iron Horse Transit Route (Dougherty Road Widening)	City of Dublin	\$24 M	Fall 2018
Route 84 Expressway Widening – South Segment	Alameda CTC	\$110 M	Fall 2018
I-880 North Safety and Operational Improvements at 23rd – 29th	Alameda CTC	\$114 M	Winter 2019



PLAN

FUND

DELIVER





## Oakland Army Base Roadway Infrastructure

Construction



West Burma Road Rail Crossing Under Construction between MH-1 and AMS Development Sites



West Burma Road at Bike Path Transition



Construction  
Complete- July 2018

OAB Roadway, Bike and Pedestrian Public Improvements  
Note: All maps and figures for illustrative purposes only.

### Project Description

The infrastructure improvements include the reconstruction, realignment and construction of local streets and roads, including Maritime Street, Burma Road, Wake Avenue, and Engineers Road. Other improvements also include appurtenant roadway facilities related to roadway drainage and access to adjacent properties within the intermodal facility boundaries, and utility facilities within the roadway corridor. These infrastructure improvements contribute to the larger redevelopment improvements of the former Oakland Army Base area to develop a state-of-the-art intermodal facility to the benefit of the City, County and State.

**Total Project Cost: \$261 M**

PLAN

FUND

DELIVER

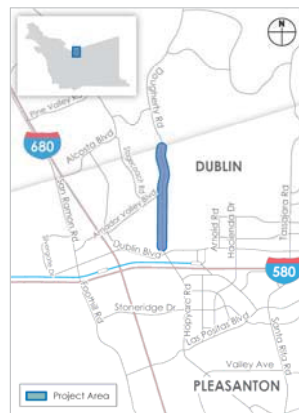


## Iron Horse Transit Route (Dougherty Road Widening)

Construction



Anticipated Completion  
FALL 2018



### Project Description

Multimodal improvements to Dougherty Road from the City of Dublin's northern boundary to the vicinity of Scarlett Drive. This project, to be constructed in six phases, includes two new vehicular travel lanes with landscaped median islands; new and improved bicycle and pedestrian infrastructure; new bus stops and bus pull-outs; roadway widening from four to six lanes to accommodate buses; and Class II bike lanes within the limits of the project. In addition to safety improvements, this project will add capacity and transit access.

**Total Project Cost: \$24 M**

Note: All maps and figures for illustrative purposes only.

PLAN

FUND

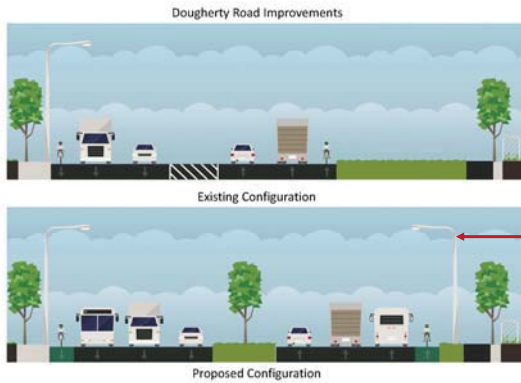
DELIVER





## Iron Horse Transit Route (Dougherty Road Widening)

Construction



PLAN

FUND

DELIVER



## I-880 North Safety and Operational Improvements at 23rd and 29th Avenues

Construction



29th Ave. Offramp bridge -  
Abutment 1 Excavation/completed piles.



Note: All maps and figures for illustrative purposes only.

### Project Description

This project will provide operational and safety improvements on I-880 at the existing overcrossings of 23rd and 29th Avenues in the City of Oakland. Improvements include replacement of the freeway overcrossing structures, safety improvements at the northbound on and off ramps and the freeway mainline.

**Total Project Cost: \$114 M**



23rd Ave. Overcrossing - 1st Stem and Soffit pour (June 9, 2018).

PLAN

FUND

DELIVER

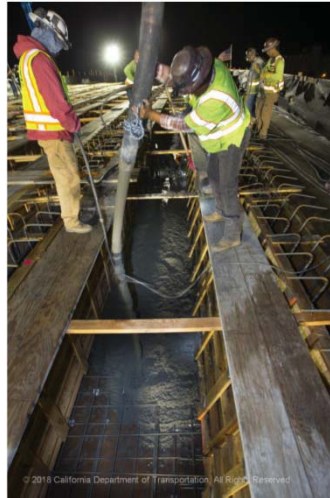


# I-880 North Safety and Operational Improvements at 23rd and 29th Avenues

Construction



**23rd Avenue Overcrossing**  
First stem and soffit pour between Abutment 5 and Bent 3 – June 2018



PLAN

FUND

DELIVER





## SR-84 Expressway - South Segment

Construction



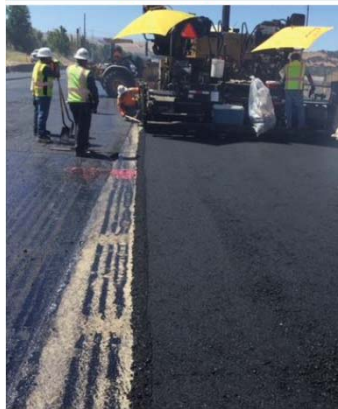
Formed and poured concrete barrier.

Total Project Cost **\$109.9 Million**

Measure BB **\$10.0 Million**

Measure B **\$39.4 Million**

Anticipated Completion  
FALL 2018



Paving at North of Concannon Boulevard.



Project 3: SR-84 Expressway (South Segment)

Note: All maps and figures for illustrative purposes only.

PLAN

FUND

DELIVER

## Beyond FY 2018/19

Construction

Project	Construction Phase Estimate	Begin Construction
GoPort: Freight Intelligent Transportation Systems, Port Utility Relocation	*TBD	2019+
GoPort: 7 <sup>th</sup> Street Grade Separation East	\$225 M	2020
SR-84 Widening from South of Ruby Hill Drive to I-680 and SR-84/I-680 Interchange Improvements	\$165 M	2021
I-80 Gilman Interchange Improvements	\$42 M	2021
I-80 Ashby Interchange Improvements	\$41 M	2021
East Bay Greenway - Lake Merritt BART to South Hayward BART	*TBD	**2021+
Oakland Alameda Access	*TBD	**2022+
I-880 Interchange Improvements	*TBD	**2023+
San Pablo (SR 123) Multi-modal Corridor	*TBD	**2024+

\*TBD: To be determined as multiple contracts are anticipated.

\*\*Assumes no funding constraints.



PLAN

FUND

DELIVER





PLAN

FUND

DELIVER

***This page intentionally left blank***