


ALAMEDA COUNTY TRANSPORTATION COMMISSION
Countywide Active
Transportation Plan



Bicycle and Pedestrian Advisory Committee
Thursday October 18, 2018



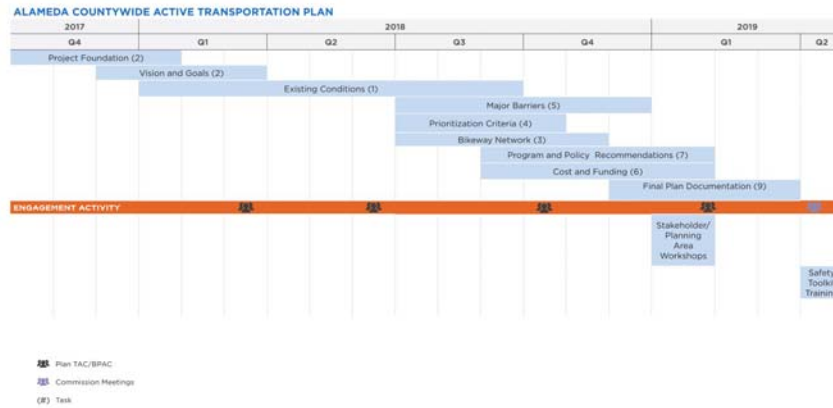
Overview

2

- Project Update & Schedule
- Draft Project Prioritization Framework
- Major Barriers
- Bikeway Vision Network
- Key Upcoming Tasks
- Next BPAC Meeting

Project Update & Schedule

3



BPAC Meetings and Topics

4

	Timeframe	Key Topic
0	July 2017	Scope and Key Deliverables
1	April 2018	Vision/goals, CATP overview, role of BPAC, outreach
2	June 2018	Existing conditions
3	October 2018	Major barriers, project prioritization criteria, draft bikeway network, program and policies
4	February 2019	Program and policy recommendations, Draft Plan

Meeting Agenda

5

- Introductions and Project Status
- Draft Project Prioritization Framework
- Major Barriers
- Bikeway Network Development
- Policies and Programs
- Key Upcoming Tasks
- Next TAC Meeting

Prioritization Approach

6

- Criteria by which to prioritize proposed active transportation projects of countywide significance
- Prioritization criteria addresses plan goals:
 - *Safety*
 - *Multimodal Connectivity*
 - *Encouragement*
 - *Impactful Investment*
- Desired outcome: improve and expand the bicycle and pedestrian networks across Alameda County

Framework: Primary Criteria

7

- **Countywide High Injury Network (HIN)**
 - Projects that would improve the safety of walking and/or biking on the County's high injury street network (identified by the CATP)
- **Major Barrier or Interjurisdictional Gap**
 - Projects that resolve or remove a barrier of countywide significance, barrier to accessing regional transit, or barrier to access the regional trail network
 - Projects that address a gap in interjurisdictional connectivity
- **Community of Concern**
 - Projects located within an MTC designated Community of Concern

Framework: Secondary Criteria

8

- **Local High Injury Network (HIN)**
 - *Projects located on a local HIN defined as streets that rank in the top 10 percent, based on frequency and severity of collisions*
- **Access to Major Activity Centers**
 - *Projects that overcome barriers to accessing major activity centers and destinations*

Meeting Agenda

AAC72

9

- Introductions and Project Status
- Draft Project Prioritization Framework
- Major Barriers
- Bikeway Network Development
- Policies and Programs
- Key Upcoming Tasks
- Next TAC Meeting

Major Barriers: Purpose

10

- Major Barriers identification will feed two CATP outcomes:

1. **Project Prioritization Framework**
2. **Concept-level designs** (two barriers per planning area)



Slide 9

AAC72 We should include this slide before the major topics. This is the first instance of this slide. It would be good to have it at the beginning under meeting overview or eliminate it from here.

ACTC, 10/17/2018

Major Barriers: Approach

11

1. Linear barriers Identification Tool
 - **Freeways**: using Caltrans District 4 Bike Plan project list
 - **Waterways**: local assessment using identification tool
 - **Rail Lines**: local assessment using identification tool
2. Discontinuities in LTS network at jurisdictional boundaries
3. Barriers on regional trails
4. Transit access barriers
5. Interface with High Injury Network

Major Barriers: Freeway Projects

12

- Caltrans District 4 Bike Plan identifies and ranks projects into High, Medium, and Low tiers
- Caltrans District 4 Pedestrian Plan effort will start in early 2019 and add to the project list

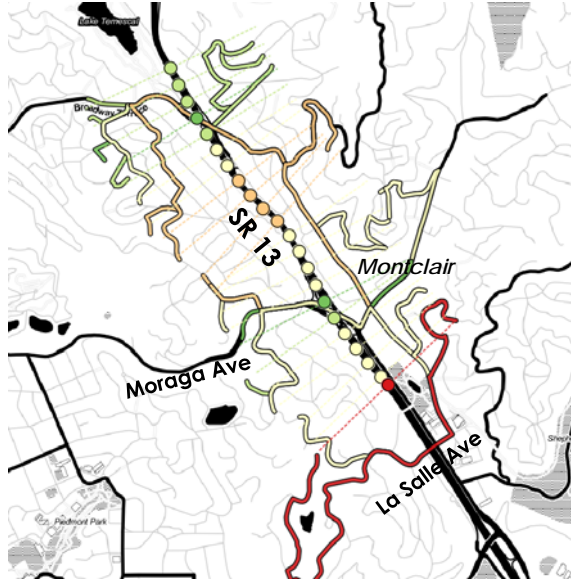


Major Barriers: Assessment Tool

13

Shortest Network Path vs. Straight Line Distance

- 1.0-1.5 times
- 1.5-2.0 times
- 2.0-2.5 times
- 2.5-3.0 times
- 3.0-3.5 times
- 3.5+ times

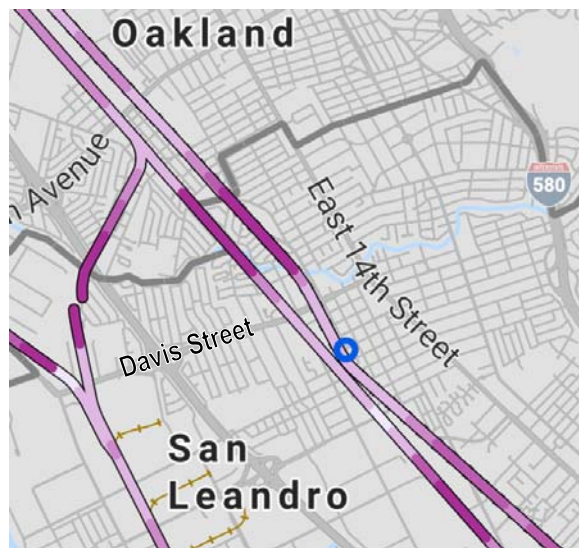


Major Barriers: Rail & Water

14

Median Diversion Distance

- 1x to 1.25x distance
- 1.25x to 1.5x distance
- 1.5x to 1.75x distance
- 1.75x to 2x distance
- 2x to 4x distance
- 4x distance and greater
- BART Station



Major Barriers: Cross-jurisdictional Barriers

15

- All jurisdiction boundaries reviewed for locations with poor low-stress access
- Locations reviewed for coincidence with challenging pedestrian environments

Major Barriers: Transit Barriers

16

- Identification of transit access barriers is a question of proximity
- Project team will map areas within proximity of transit stations/hubs of regional significance:
 - *BART stations*
 - *ACE/Amtrak stations*
 - *Ferry terminals*
 - *Major bus transfer locations*

Meeting Agenda

19

- Introductions and Project Status
- Draft Project Prioritization Framework
- Major Barriers
 - Discuss Approach to Identifying Major Barriers
 - Discuss Major Barriers for Design Concepts
- Bikeway Network Development
- Policies and Programs
- Key Upcoming Tasks
- Next TAC Meeting

Policies and Programs: Overview

20

- Compiling a countywide inventory of active transportation policies and programs
- Looking for areas where Alameda CTC can provide:
 - *Coordination*
 - *Leadership*
 - *Technical Resources*

Policies and Programs: Approach

21

- Staff Interviews (Held April 2018)
 - *9 of 15 cities participated + Transit Providers, Alameda County Public Works, and East Bay Regional Park District*
 - *Purpose:*
 1. Understand existing conditions and constraints
 2. Inform CATP development process
 3. Identify how ACTC can better support local and regional jurisdictions
- Through TAC: topic areas for exploration
- Compiling a countywide inventory of active transportation policies and programs

Programs and Policies: Key Challenges

22

1. Lack of capacity to implement infrastructure and programs
2. Lack of up-to-date guidance regarding design and implementation of infrastructure
3. Lack of opportunities for cross-jurisdiction/cross-agency coordination
4. Lack of capacity and/or knowledge for funding application

Policies and Programs: Potential Resources

23

1. Guidance on implementation, including interim treatments
2. Sample best practice designs and staff training for new design treatments, including bus-bike conflicts
3. Maintenance guidance, including Class IV facilities
4. Roundtable to share of success stories between jurisdictions
5. Programs to augment staff capacity
6. Cross-jurisdiction coordination
7. Grant application assistance and funding guidance

Meeting Agenda

24

- Introductions and Project Status
- Draft Project Prioritization Framework
- Major Barriers
 - Discuss Approach to Identifying Major Barriers
 - Discuss Major Barriers for Design Concepts
- Bikeway Network Development
- Policies and Programs
- Key Upcoming Tasks
- Next TAC Meeting

Key Upcoming Tasks

25

- Work Related to Plan Content
 - *Finalize Existing Conditions including HIN and BNA*
 - *Finalize Bikeway Network and Major Barriers Inventory*
 - *Develop Program and Policy Recommendations*
 - *Develop Cost and Revenue Estimates*
 - *Final Plan Documentation*
- Supplemental Work to Support the Plan
 - *Planning Area Workshops*
 - *Concept Designs for Specific Major Barriers*
 - *Cost Estimates for Specific Major Barriers*
 - *Safety Toolkit Training*

Meeting Agenda

26

- Introductions and Project Status
- Draft Project Prioritization Framework
- Major Barriers
 - Discuss Approach to Identifying Major Barriers
 - Discuss Major Barriers for Design Concepts
- Bikeway Network Development
- Policies and Programs
- Key Upcoming Tasks
- Next TAC Meeting

BPAC Meetings and Topics

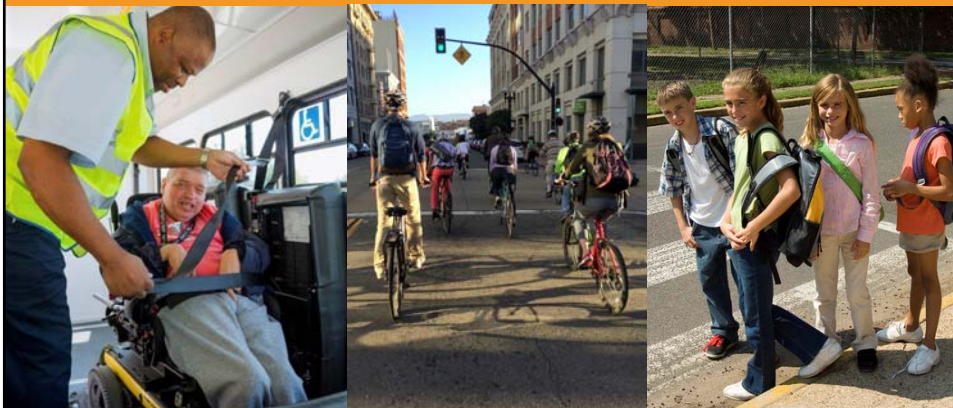
27

	Timeframe	Key Topic
	July 2017	Scope and Key Deliverables
1	April 2018	Vision/goals, CATP overview, role of TAC, outreach
2	June 2018	Existing conditions
3	October 2018	Major barriers, project prioritization criteria, draft bikeway network, program and policies
4	February 2019	Program and policy recommendations, Draft Plan



ALAMEDA COUNTY TRANSPORTATION COMMISSION

Countywide Active Transportation Plan



Technical Advisory Committee Meeting #3
Wednesday October 17, 2018

