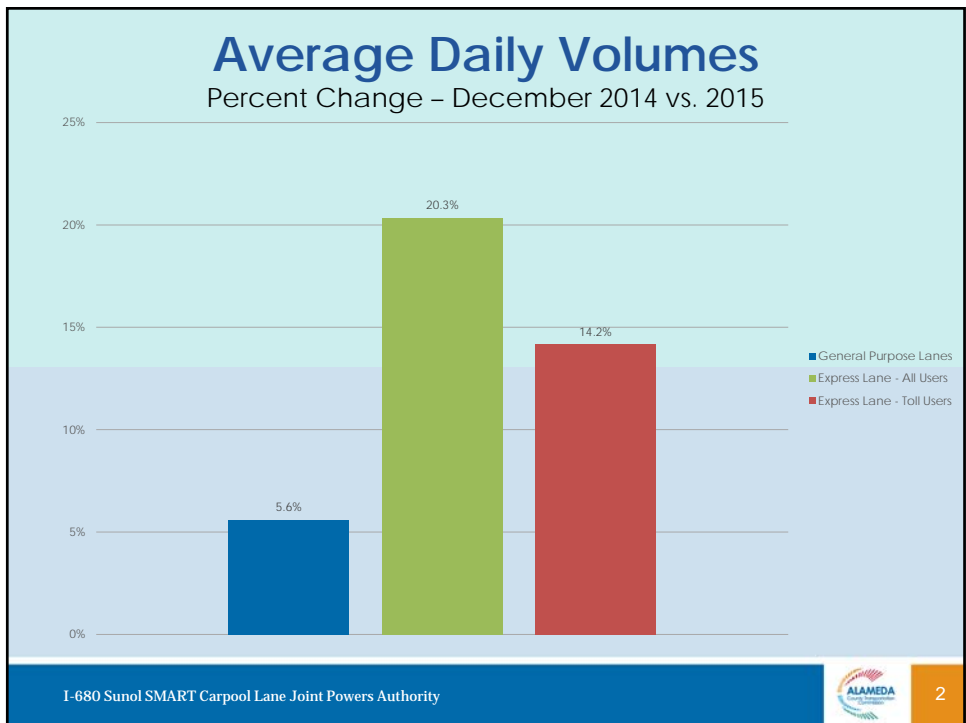




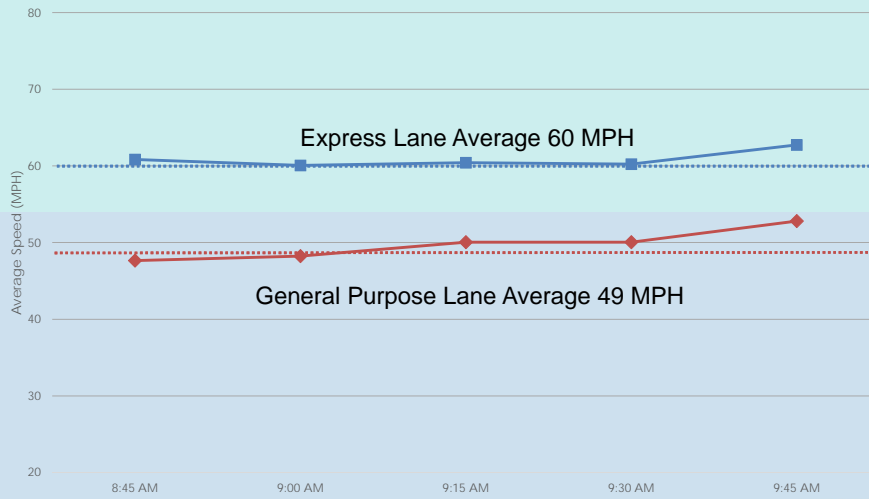
I-680 SB Express Lane Monthly Operations December 2015 Update

A Presentation for the
I-680 Sunol Smart Carpool Lane Joint Powers Authority (SSCLJPA)
February 8, 2016



Average Travel Speed - During Peak Hour

Central Segment (8:45 – 9:45am, Mon - Thurs)



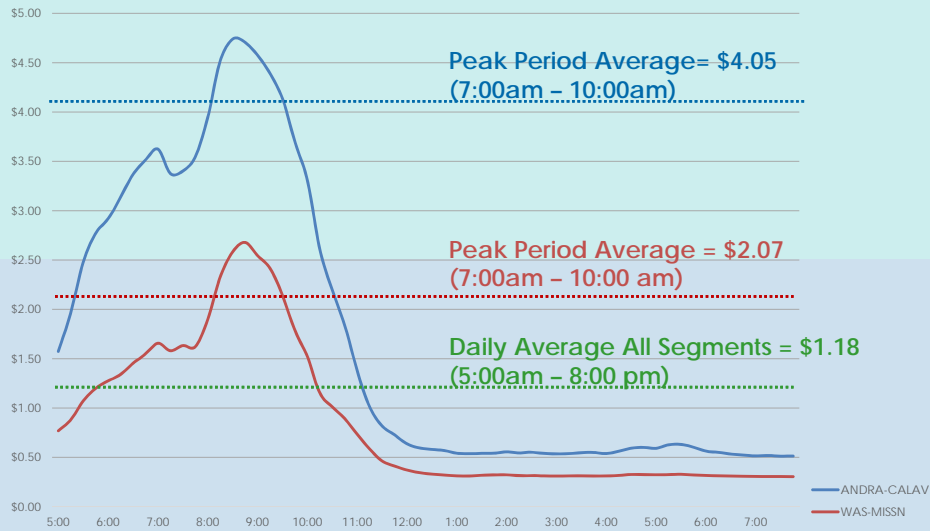
I-680 Sunol SMART Carpool Lane Joint Powers Authority



3

Average Toll Rates

By Segment – December 2015



I-680 Sunol SMART Carpool Lane Joint Powers Authority



4

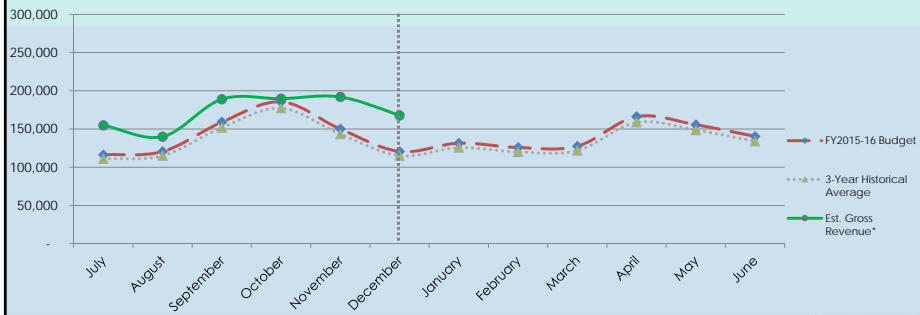
Revenue - Estimated Gross vs. Forecasted

Cumulative Revenue in FY 2015/16
(July - December 2015)

Estimated Gross Revenue **\$1,033,361** **↑ 21%**

Forecasted* **\$852,505**

* Forecasted revenue for the full FY 15/16 is \$1,700,000



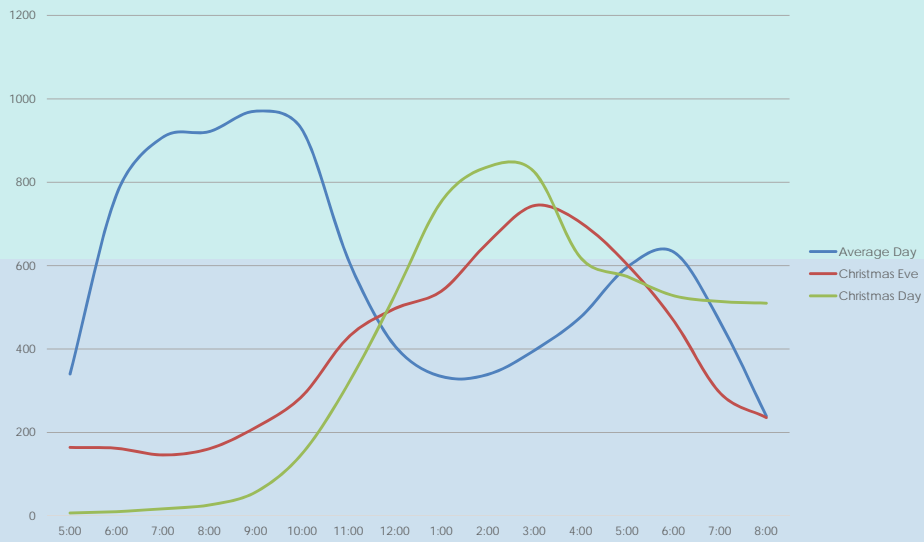
I-680 Sunol SMART Carpool Lane Joint Powers Authority



5

Christmas 2015

Express Lane Volumes: 12/24, 12/25, and Monthly Average



I-680 Sunol SMART Carpool Lane Joint Powers Authority



6

Toll Rate Analysis

How did the toll rates change across Fiscal Years?

	Fiscal Year 2013-14	Fiscal Year 2014-15	Fiscal Year 2015-16 (Q1-Q2)
Andrade to Calaveras			
Maximum Potential Toll Rate	\$7.50	\$7.50	\$7.50
Days Maximum Achieved (of total)	71 (of 261)	106 (of 261)	46 (of 132)
Average Posted Toll Rate (7 am – 10 am)	\$3.82	\$4.27	\$4.12 
Washington to S. Mission			
Maximum Potential Toll Rate	\$6.50	\$6.50	\$6.50
Days Maximum Achieved (of total)	0 (of 261)	3 (of 261)	5 (of 132)
Average Posted Toll Rate (7 am – 10 am)	\$1.76	\$2.21	\$2.15 

