



Programs Update

Measure B, Measure BB, and Vehicle Registration Fee Programs

A Presentation by
Alameda County Transportation Commission Staff
 April 2018



Alameda CTC Local Funds: A Brief History



Measure B (MB)

- In 1986, voters approved Measure B half-cent sales tax
- In 2000, Measure B reauthorized with 81.5% voter approval rate


Vehicle Registration Fee (VRF)

- In 2010, voters approved the Vehicle Registration Fee
- Authorized collection of an annual \$10 per vehicle registration fee starting in May, 2011

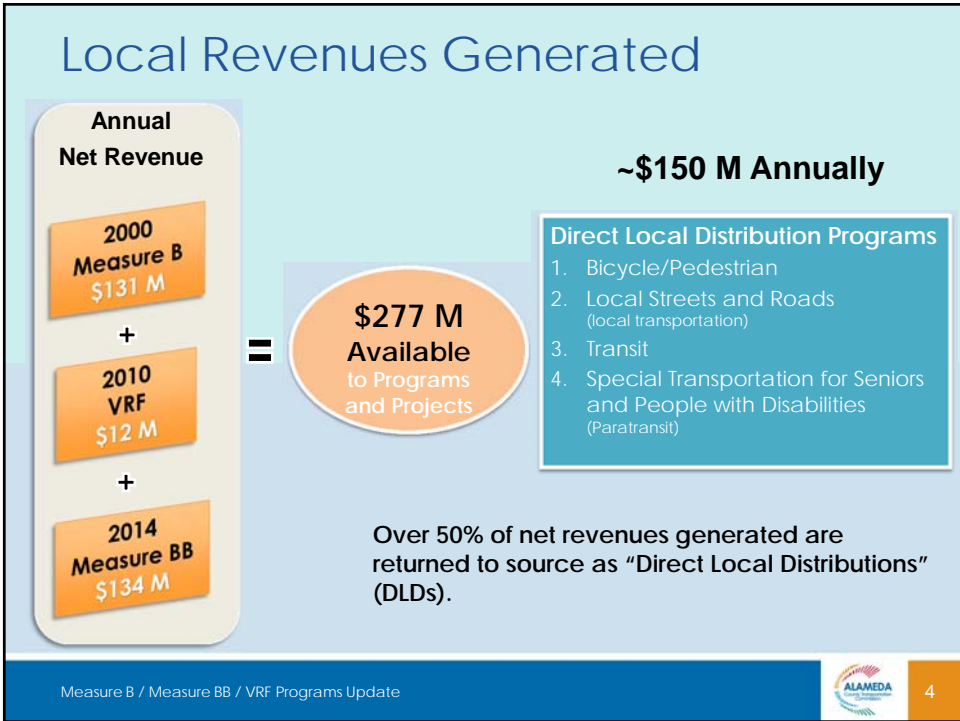
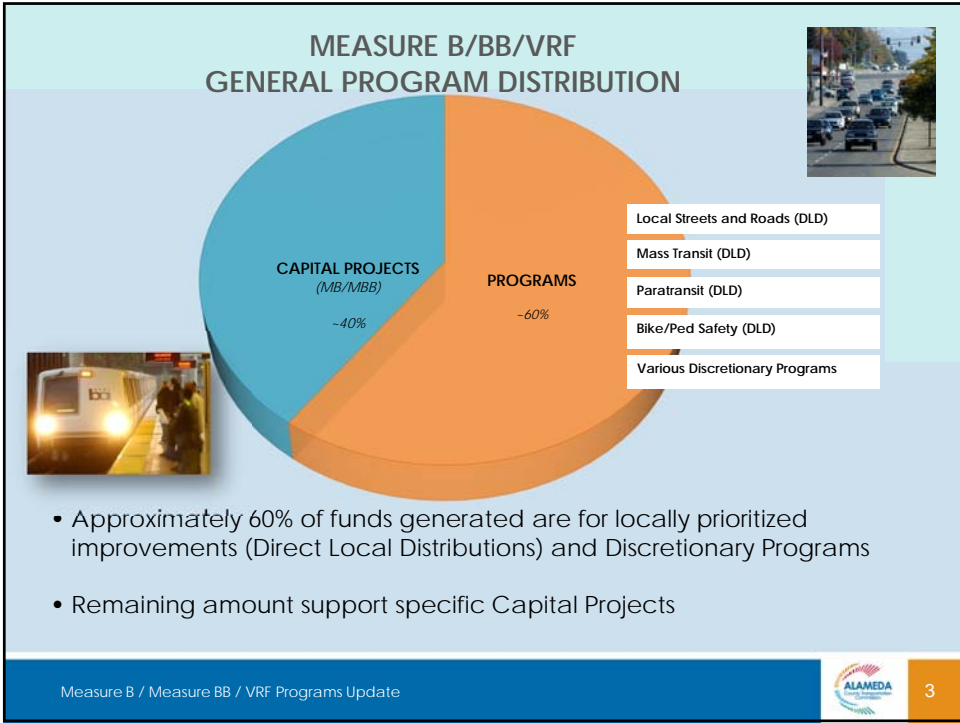
Measure BB (MBB)

- In 2014, voters approved Measure BB to augment and extend the existing sales tax measure
- Collections started in April 2015

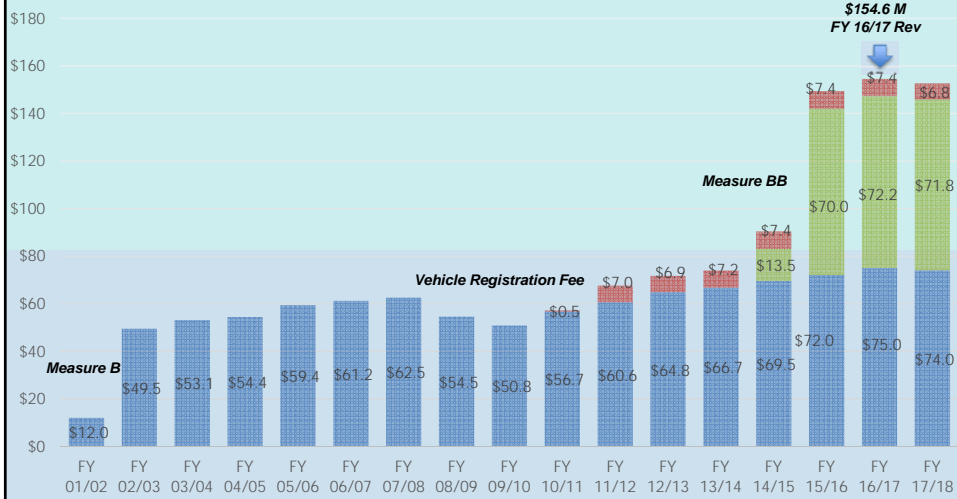
Measure B / Measure BB / VRF Programs Update



2



Measure B/BB/VRF Historical DLD Distributions

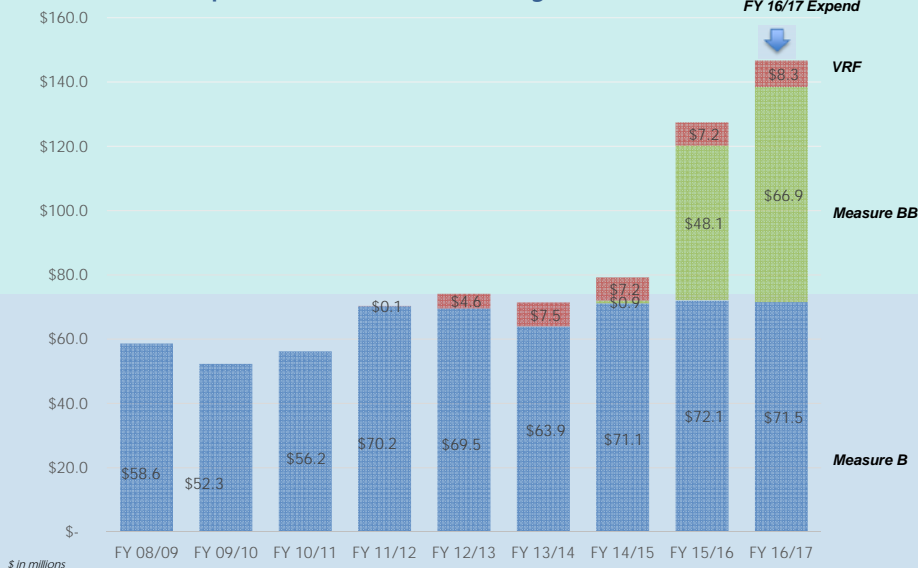


Measure B / Measure BB / VRF Programs Update



5

DLD Expenditure History



\$ in millions

Measure B / Measure BB / VRF Programs Update



6

DLD Fund Balances (as of June 30, 2017)

| Jurisdiction: | MEASURE B | MEASURE BB | VRF | TOTAL |
|---------------------|---------------------|---------------------|--------------------|---------------------|
| AC Transit | \$4,406,923 | \$4,859,416 | | \$9,266,339 |
| BART | \$0 | \$0 | | \$0 |
| LAVTA | \$0 | \$0 | | \$0 |
| WETA | \$942,696 | \$104,279 | | \$1,046,975 |
| ACE | \$1,649,615 | \$5,358,820 | | \$7,008,435 |
| Alameda County | \$1,159,643 | \$2,829 | \$630,825 | \$1,793,297 |
| City of Alameda | \$3,774,895 | \$1,709,082 | \$457,525 | \$5,941,502 |
| City of Albany | \$275,120 | \$350,879 | \$127,231 | \$753,230 |
| City of Berkeley | \$2,498,331 | \$3,922,745 | \$1,037,275 | \$7,458,352 |
| City of Dublin | \$842,263 | \$755,108 | \$207,516 | \$1,804,887 |
| City of Emeryville | \$1,024,967 | \$351,899 | \$179,404 | \$1,556,270 |
| City of Fremont | \$3,154,839 | \$1,290,623 | \$524,480 | \$4,969,942 |
| City of Hayward | \$4,773,849 | \$4,101,603 | \$1,020,835 | \$9,896,287 |
| City of Livermore | \$2,706,144 | \$1,780,069 | \$1,154,634 | \$5,640,847 |
| City of Newark | \$832,684 | \$718,569 | \$203,027 | \$1,754,280 |
| City of Oakland | \$12,493,323 | \$9,510,040 | \$1,262,281 | \$23,265,644 |
| City of Piedmont | \$73,181 | \$238,316 | \$4,931 | \$316,429 |
| City of Pleasanton | \$1,424,633 | \$1,760,556 | \$760,937 | \$3,946,126 |
| City of San Leandro | \$2,313,732 | \$1,410,222 | \$571,850 | \$4,295,804 |
| City of Union City | \$821,847 | \$1,112,775 | \$633,988 | \$2,568,610 |
| Total | \$45,168,686 | \$39,337,831 | \$8,776,739 | \$93,283,255 |

Measure B / Measure BB / VRF Programs Update



7

Projected LSR Return-to-Source Funding

| Jurisdiction | Local Measure B (FY 2017-18) | Local Measure BB (FY 2017-18) | Local VRF (FY 2017-18) | State SB-1 LSR (FY 2018-19) | Total |
|-------------------|---------------------------------|----------------------------------|---------------------------|--------------------------------|----------------------|
| Alameda | \$1,827,269 | \$1,719,733 | \$305,733 | \$1,463,764 | \$5,316,499 |
| Albany | \$406,120 | \$382,219 | \$74,062 | \$354,001 | \$1,216,402 |
| Berkeley | \$2,946,314 | \$2,772,920 | \$473,850 | \$2,210,754 | \$8,403,838 |
| Dublin | \$452,011 | \$405,955 | \$251,917 | \$1,061,881 | \$2,171,764 |
| Emeryville | \$279,867 | \$263,396 | \$42,167 | \$221,677 | \$807,107 |
| Fremont | \$2,348,658 | \$2,109,350 | \$994,597 | \$4,215,942 | \$9,668,547 |
| Hayward | \$2,330,621 | \$2,093,151 | \$700,021 | \$2,926,807 | \$8,050,600 |
| Livermore | \$1,014,887 | \$911,479 | \$387,908 | \$1,626,164 | \$3,940,438 |
| Newark | \$488,906 | \$439,091 | \$194,063 | \$829,342 | \$1,951,402 |
| Oakland | \$10,991,482 | \$10,344,622 | \$1,638,024 | \$7,762,889 | \$30,737,017 |
| Piedmont | \$421,081 | \$396,300 | \$44,333 | \$212,477 | \$1,074,191 |
| Pleasanton | \$828,434 | \$744,023 | \$337,655 | \$1,385,048 | \$3,295,160 |
| San Leandro | \$1,423,288 | \$1,278,267 | \$404,938 | \$1,618,137 | \$4,724,630 |
| Union City | \$739,715 | \$664,345 | \$319,358 | \$1,347,844 | \$3,071,262 |
| County of Alameda | \$2,019,324 | \$2,276,429 | \$671,374 | \$21,491,532 | \$26,458,659 |
| TOTAL | \$28,517,977 | \$26,801,280 | \$6,840,000 | \$48,728,259 | \$110,887,516 |

* Measure B/BB/VRF projections as of June 2017
 * SB1 based on state projections as of April 2017

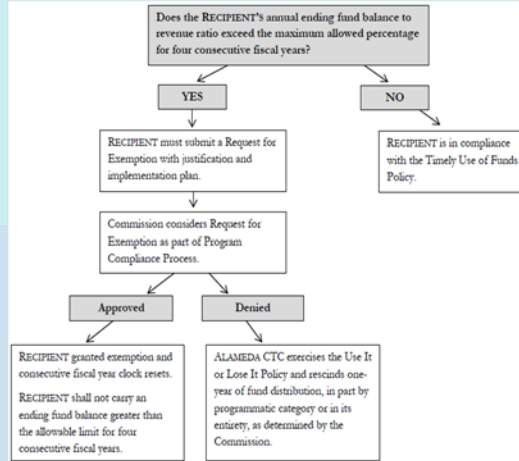
Measure B / Measure BB / VRF Programs Update



8

Timely Use of Funds Policies

- Policy:** Recipient shall not carry a fiscal year ending fund balance greater than 40 percent of the DLD revenue received for that same fiscal year for four consecutive fiscal years, by funding program.
- Effective:** Policy applies to Fiscal Year 2016-17 funds.
- Required Compliance by:** end of Fiscal Year 2019-20



Monitoring Timely Use of Funds

Ratio Percentage = Ending Balance / Annual Revenue

| Jurisdiction | MEASURE B | MEASURE BB | VRF |
|---------------------|-----------|------------|------|
| AC Transit | 15% | 15% | |
| BART | 0% | 0% | |
| LAVTA | 0% | 0% | |
| WETA | 91% | 15% | |
| ACE | 38% | 0% | |
| Alameda County | 50% | 201% | 86% |
| City of Alameda | 166% | 81% | 136% |
| City of Albany | 57% | 77% | 158% |
| City of Berkeley | 69% | 116% | 204% |
| City of Dublin | 133% | 137% | 75% |
| City of Emeryville | 293% | 108% | 361% |
| City of Fremont | 79% | 40% | 49% |
| City of Hayward | 128% | 125% | 131% |
| City of Livermore | 208% | 157% | 272% |
| City of Newark | 101% | 107% | 96% |
| City of Oakland | 92% | 75% | 70% |
| City of Piedmont | 16% | 56% | 10% |
| City of Pleasanton | 121% | 159% | 210% |
| City of San Leandro | 115% | 80% | 133% |
| City of Union City | 47% | 80% | 184% |

Reexamine Policies on Fund Balances

- Examine stronger policy options to encourage the drawdown of balances if the balances are not decreasing as a result of existing policy.
 - *Subvention of DLD Funds Policy for recipients that exceed a certain allowable balance.*
 - *Needs to be vetted by all recipients and in consideration of smaller jurisdictions.*
 - DLD fund balances need to go down to be competitive for external discretionary funds.

Discretionary Program Funds

- Discretionary funds are programmed through the Comprehensive Investment Plan (CIP) process.
- 2018 CIP programmed and allocated over \$100M in local funds in April 2017.
- 84 Active Funding Agreements (~\$320M)



| Measure B | Measure BB | VRF |
|------------------------------|--|------------------------|
| Bicycle and Pedestrian | Bicycle and Pedestrian | Bicycle and Pedestrian |
| Express Bus | Freight and Economic Development | Transit |
| Paratransit | Paratransit | |
| Transit Oriented Development | Affordable Student Transit Pass | |
| | Community Development Investment Program | |
| | Technology, Innovation, & Development | |
| | Transit Innovation Service | |
| | Dumbarton Corridor Area Improvements | |
| | Railroad ROW Preservation & Track Improvements | |
| | Freight Corridors | |
| | Three Major Trails | |

Union City Blvd Class 2 Bike Lanes

City of Union City



Project Scope

Construct approximately two miles of Class II buffered bicycle lanes in each direction on Union City Boulevard from 600 feet South of Alvarado to the City limits of Fremont.

\$6.7M MBB

\$0.1M TFCA

\$2.1M Local Match

\$8.9M Total Cost

PE/Enviro, PS&E, CON

Begin/End: 03/18 to 6/20

BENEFITS

- Two-mile gap closure between Hayward & Fremont
- Median buffer on between the travel lane and bike lane for road configuration and signal modifications to optimize circulation



Bus Rapid Corridor Upgrades

AC Transit

Area Map and Rapid Bus Corridors



\$1.0M MB Transit

\$4.0M VRF Transit

\$5.0M Local Match

\$10.0M Total Cost

Project Scope

Corridor-wide upgrades of transit signal priority (TSP) infrastructure, TSP gap closure, signal coordination, and bus stop enhancements.

- San Pablo Avenue (Lines 72R, 72 and 72M) between 20th Street in Oakland and the County border.
- Telegraph Avenue corridor (Line 6) between downtown Oakland and downtown Berkeley, including adjacent streets.
- Grand Avenue from Northgate Avenue and Lake Park Avenue in Oakland.

PE/Enviro, PS&E, CON

Begin/End: 07/17 to 4/20



Next Steps:

DLD Program Compliance Review (FY 16/17)

- Review Expenditures and monitor fund balances
- Summary report to Commission in June 2018
- Review balances and potential changes to DLD policies

2020 Comprehensive Investment Plan

- Next call for projects of local discretionary fund sources will be conducted as part of the upcoming 2020 CIP (*Fall 2018*)
- Five-year programming window from FY 19/20 to FY 23/24

