

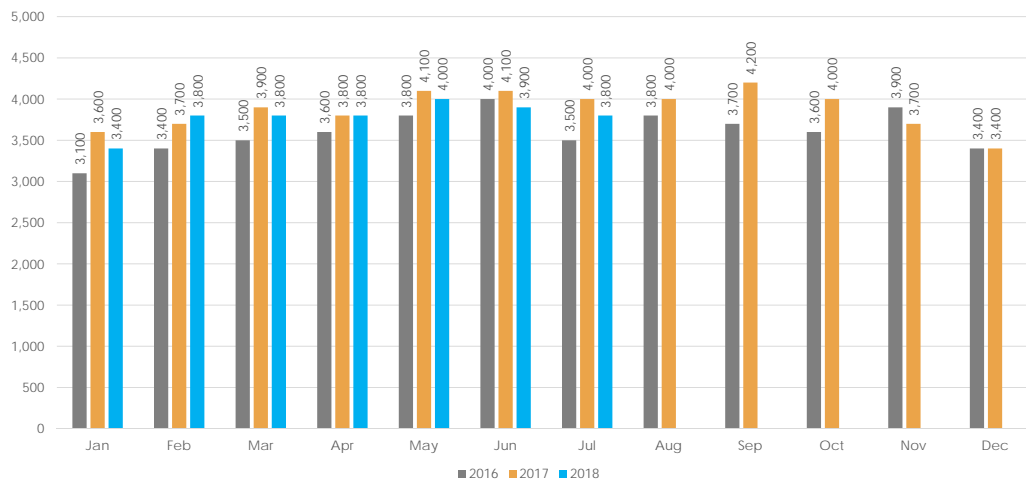


ALAMEDA COUNTY TRANSPORTATION COMMISSION
I-680 Sunol Express Lane
Operations Update



I-680 Sunol Smart Carpool Lane Joint Powers Authority (Sunol JPA)
 Ashley Tam, Associate Transportation Engineer
 September 10, 2018

I-680 Sunol EL Average Daily Toll Trips
 January 2016 – July 2018

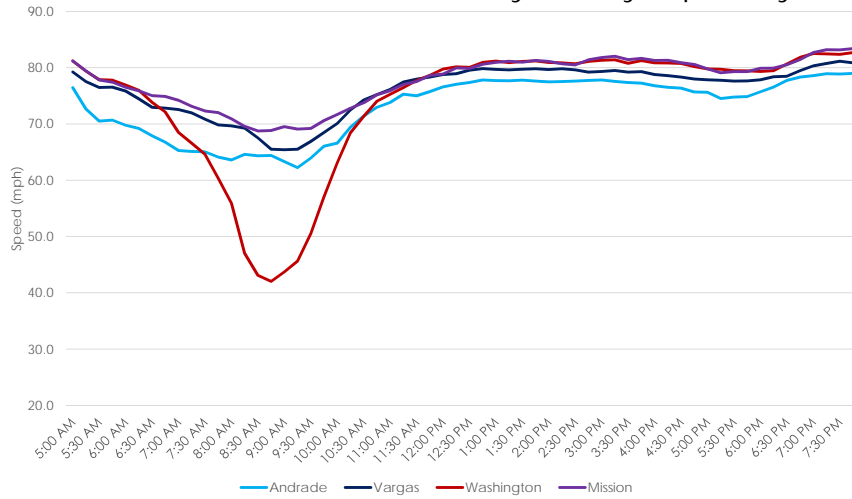


968,000
 Toll trips
 in
 FY17-18



I-680 Sunol Corridor Average Speed Graph

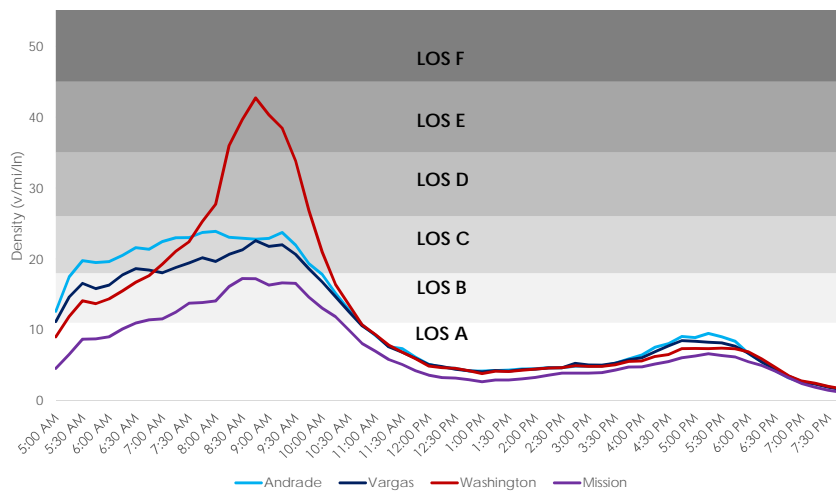
Monday- Friday, April-July 2018



I-680 Sunol Express Lane Operations Update

I-680 Sunol Corridor Average Density Graph

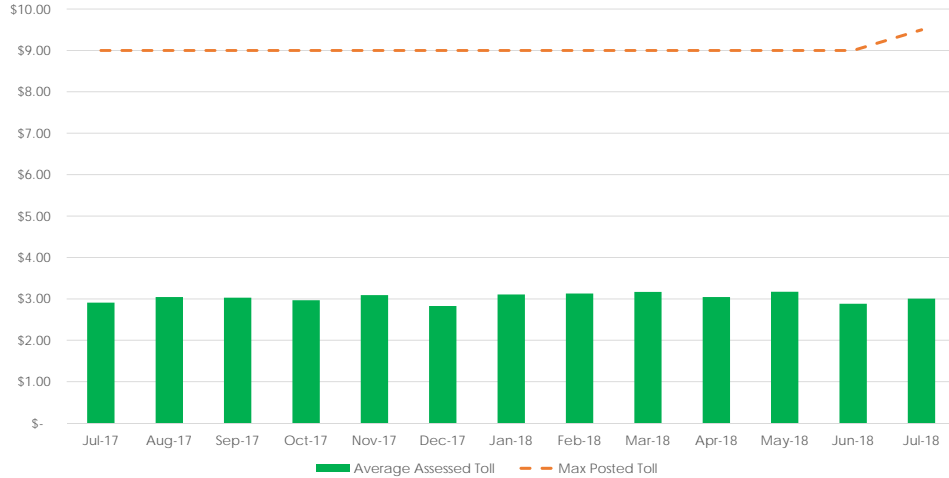
Monday- Friday, April-July 2018



I-680 Sunol Express Lane Operations Update

I-680 Sunol Historical Toll Rate

July 2017 - July 2018



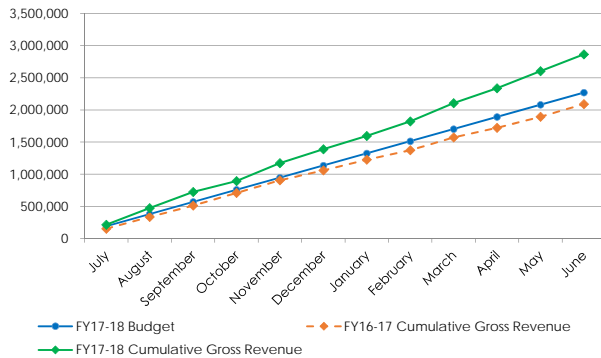
To manage congestion, the maximum toll was increased from \$9.00 to \$9.50 in July 2018



I-680 Sunol EL Revenue: Estimated Gross vs. Forecasted

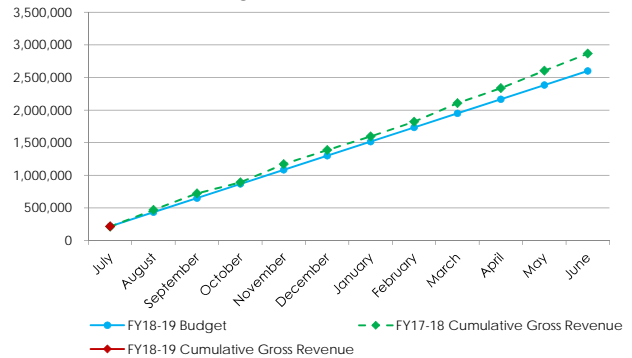
Cumulative Revenue in FY2017-18
(July 2017 - June 2018)

Estimated Gross Revenue	\$ 2,870,000
Forecast Budget	\$ 2,270,000



Cumulative Revenue in FY2018-19
(July 2018)

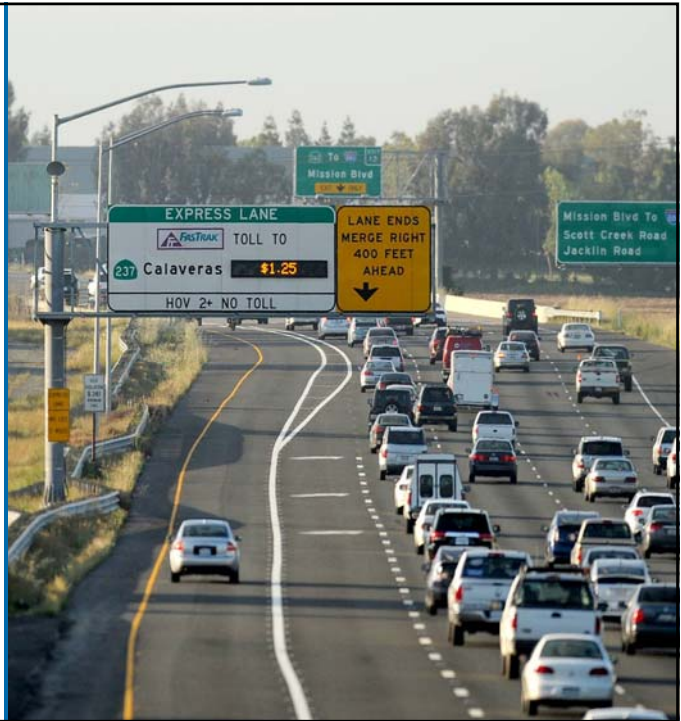
Estimated Gross Revenue	\$ 217,000
Forecast Budget	\$ 217,000



Questions?

For more information, visit
www.AlamedaCTC.org

Alameda County Transportation Commission • 1111 Broadway, Suite 800
Oakland, CA 94607 • 510.208.7400



Thank You

For more information, visit
www.AlamedaCTC.org

Alameda County Transportation Commission • 1111 Broadway, Suite 800
Oakland, CA 94607 • 510.208.7400