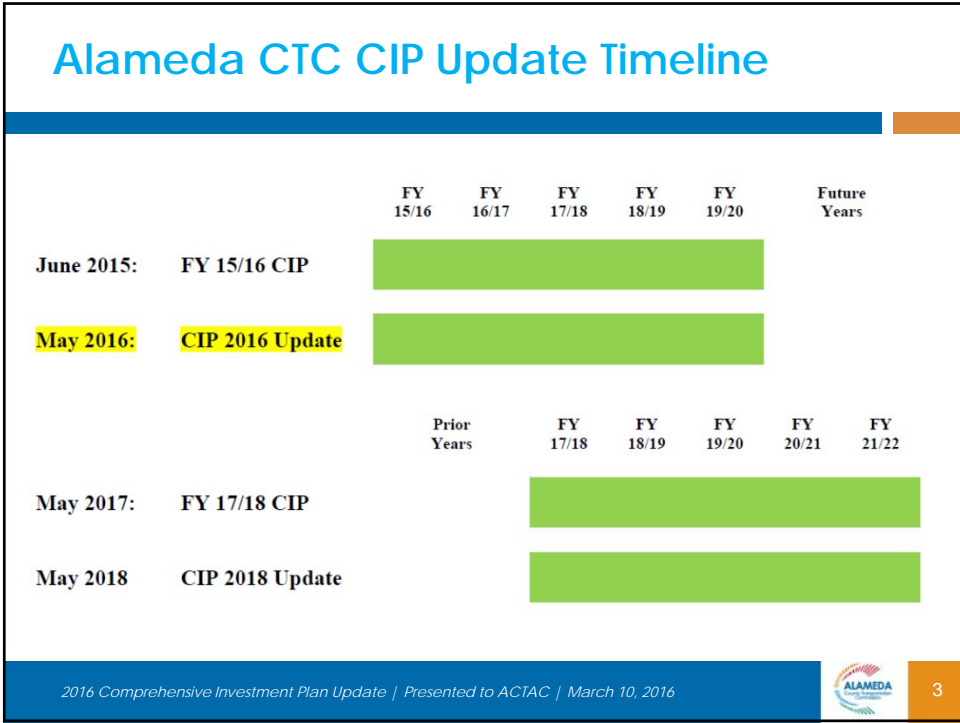




Alameda CTC Comprehensive Investment Plan (CIP) Overview


- Single document summarizing the Programming and Allocation actions approved by the Alameda CTC
- Five-Year programming horizon and Two-Year Allocation Plan
- Candidate list of programs and projects based on Countywide Transportation Plan (CTP) updates
- CIP updated every two years to add two new years to the five-year horizon
- CIP updated annually to reflect current status of programs, projects and funding
- Annual updates satisfy Expenditure Plan requirements for Strategic Plan updates



Alameda CTC CIP 2016 Update List of Programs and Projects

- Measure BB funding is the only new funding added in the CIP 2016 Update
- \$47 million of Measure BB allocated in the FY 15/16 CIP still active
- 2016 CIP Update adds programming of \$217 million of Measure BB to the 5-Yr horizon of the FY 15/16 CIP
- 2016 CIP Update adds allocations of \$137 million of Measure BB in FY's 15/16 & 16/17 to 26 programs and projects
- Program and project list based on readiness and priorities determined by the CTP, Countywide Modal Plans, and coordination with local agencies

2016 Comprehensive Investment Plan Update | Presented to ACTAC | March 10, 2016


4

Alameda CTC CIP 2016 Update List of Programs and Projects

- **Project development for freight-related programs and projects recommended for pursuit of State and Federal funding** (Call for Projects already issued)
- **Multi-modal corridor studies for major arterial corridors** to identify prioritized list of specific improvements for implementation
- **CIP 2016 Update Includes programs and projects from Alameda CTC Capital Project Delivery Plan (CPDP)** as approved by the Alameda CTC

2016 Comprehensive Investment Plan Update | Presented to ACTAC | March 10, 2016



5

Alameda CTC CIP 2016 Update Programming Principles and Assumptions

- **Purpose of the 2016 CIP Update**
 - Changes to 5-Year programming horizon of FY 15/16 CIP
 - Satisfy Strategic Plan requirements for voter-approved Measures
- **Incorporation of long- and near-term planning efforts**
- **Updating Revenue Forecast for fund sources**



2016 Comprehensive Investment Plan Update | Presented to ACTAC | March 10, 2016



6

Alameda CTC CIP 2016 Update Programming Principles and Assumptions

- **Programming and Allocation Requirements**
 - Program/Project definition by Phase
 - Cost-sharing arrangements and eligible costs
 - Staff time, oversight, permit fees, etc. for Direct Local Distribution recipients not eligible for program/project allocations
 - Allocations by Phase
 - Risk sharing for allocations with additional risk
 - Retroactive allocations acknowledged at time of allocation
 - Alameda CTC Local Business Contract Equity Program

2016 Comprehensive Investment Plan Update | Presented to ACTAC | March 10, 2016



7

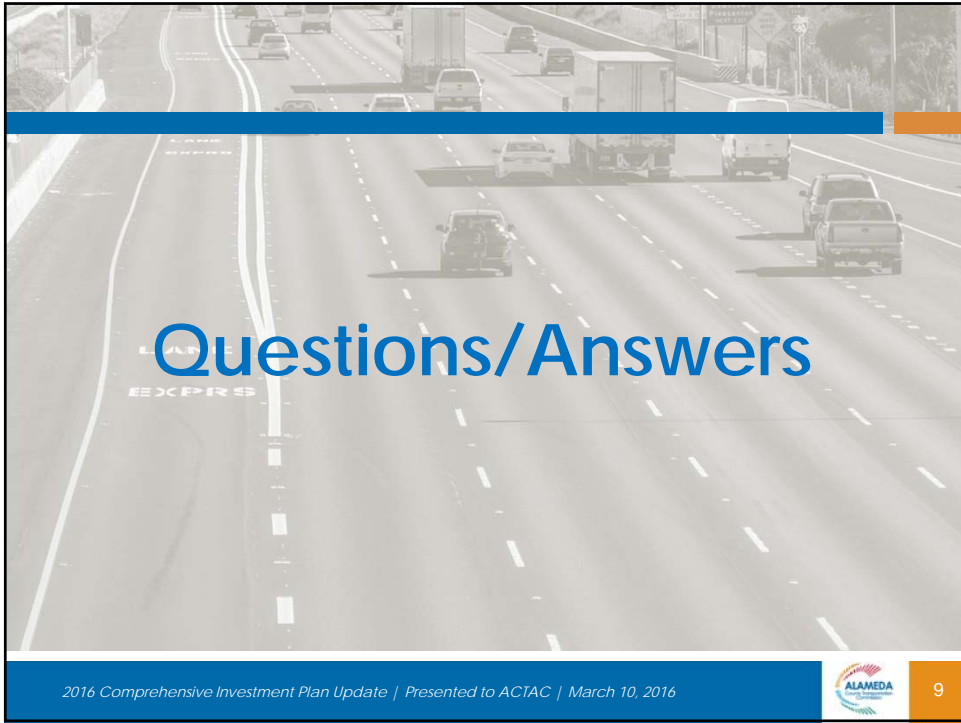
Alameda CTC CIP 2016 Update Next Steps

- **Alameda CTC Approve CPDP (March 2016)**
- **Alameda CTC Approve CIP 2016 Update (May 2016)**
- **Alameda CTC Issues Request for Proposals** for program and project phases directly implemented by the Alameda CTC (from CPDP)
- **Alameda CTC Execute Funding Agreements** with Local Sponsors

2016 Comprehensive Investment Plan Update | Presented to ACTAC | March 10, 2016




8



Questions/Answers

2016 Comprehensive Investment Plan Update | Presented to ACTAC | March 10, 2016



9

This page intentionally left blank