



EXPRESS LANE
FASTRAK TOLL TO
 262 Mission \$1.50
 237 Calaveras \$1.25
 HOV 2+ NO TOLL

**I-680 SB Express Lane
 Monthly Operations
 June 2015 Update**


A Presentation for the
 I-680 Sunol Smart Carpool Lane Joint Powers Authority (SSCLJPA)
September 14, 2015




**Express Lane
 June 2015 Highlights**

- Average Express Lane Speed: **>70 MPH**
- Max Speed Differential: **10-15 MPH**
- Average Daily Toll Paying Users: **3,389**

77% Repeat Customer → 92% Revenue



I-680 Sunol SMART Carpool Lane Joint Powers Authority



2

Corridor Throughput Year Over Year Comparison by Month

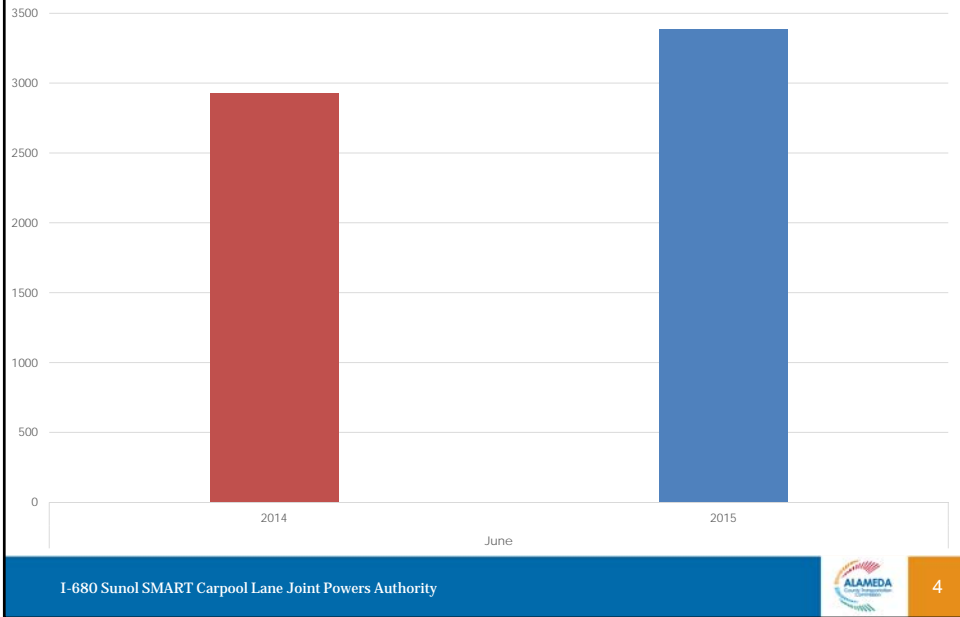
	June 2014	June 2015
Throughput in Ave. Peak Hour Volume	7,308 vph	7,409 vph
Throughput in % Capacity	96%	97% ↑ 1%

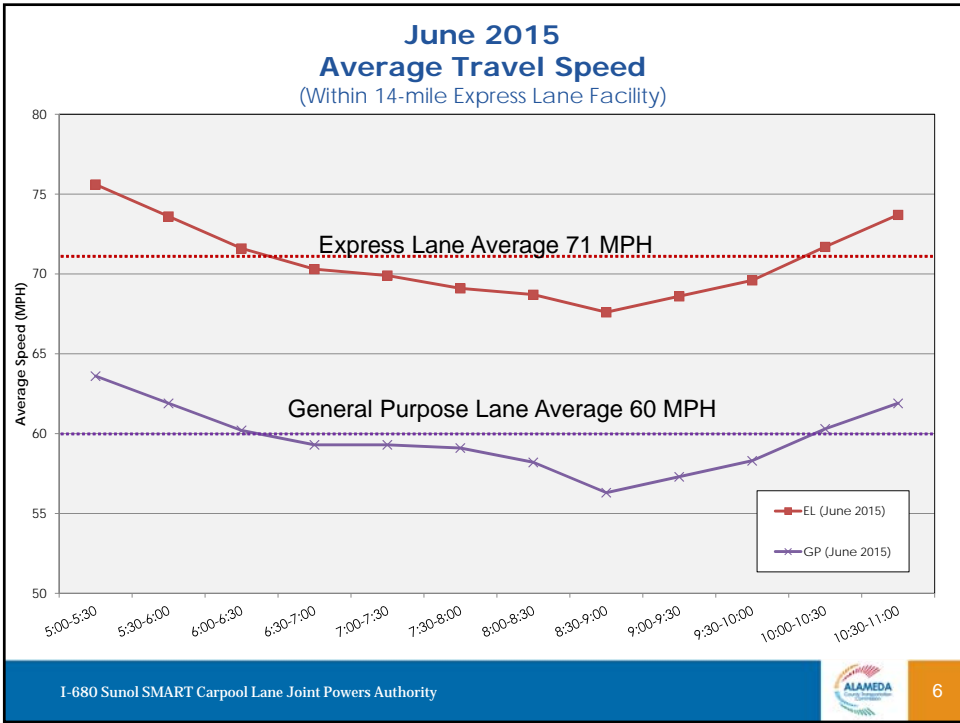
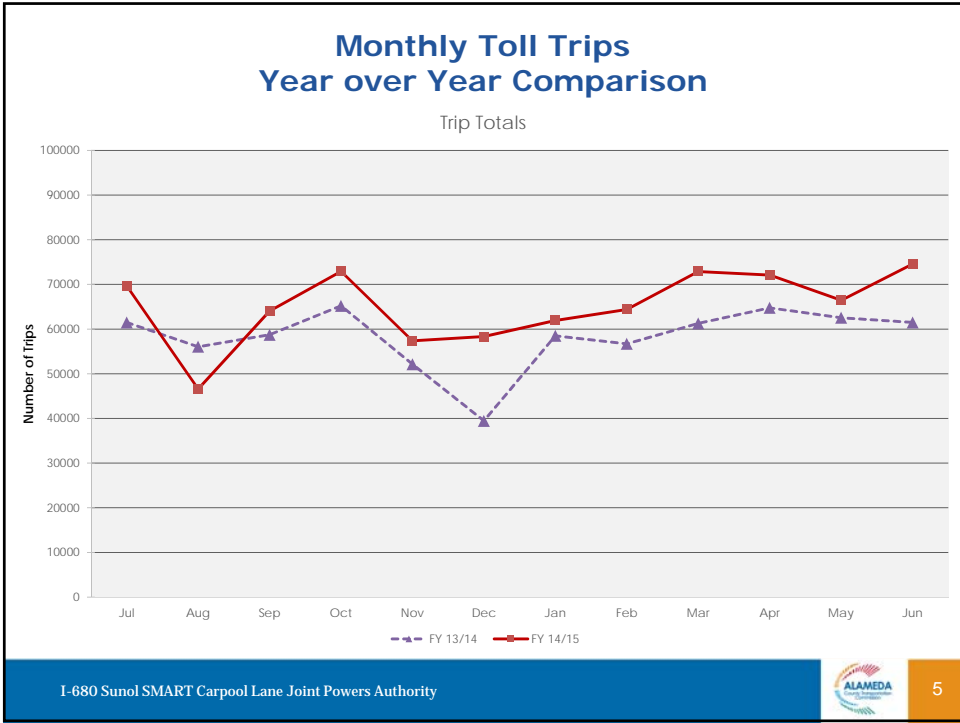


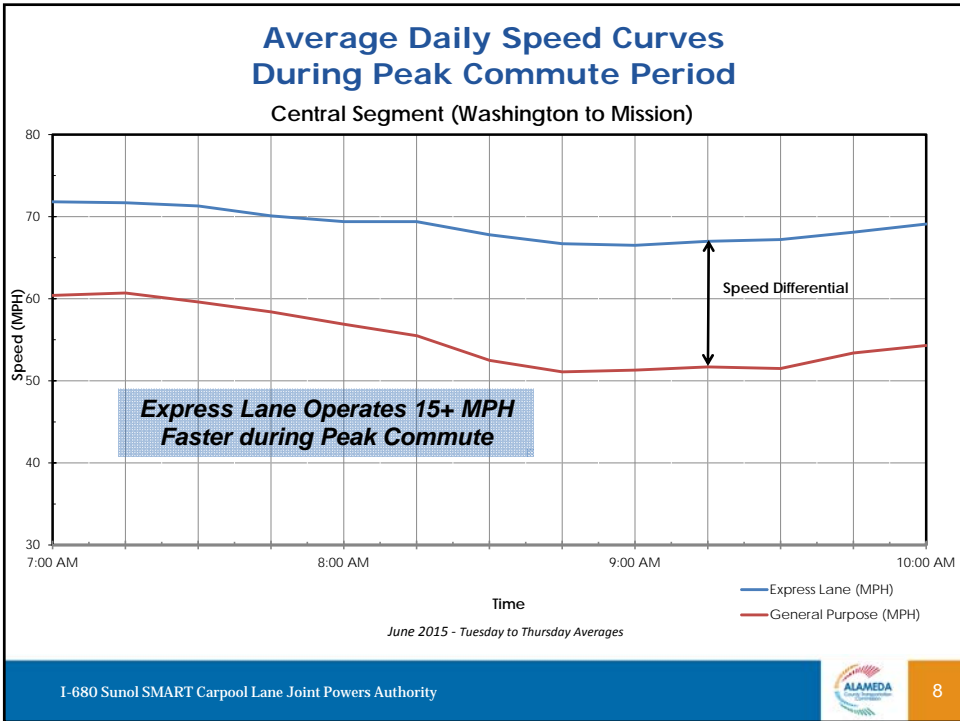
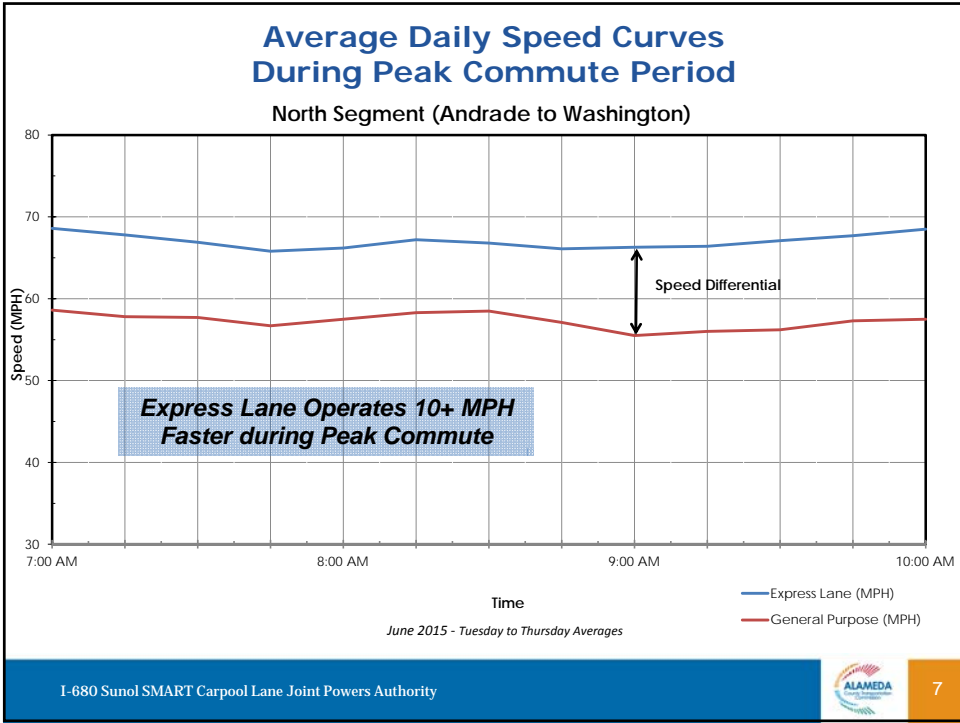
I-680 Sunol SMART Carpool Lane Joint Powers Authority

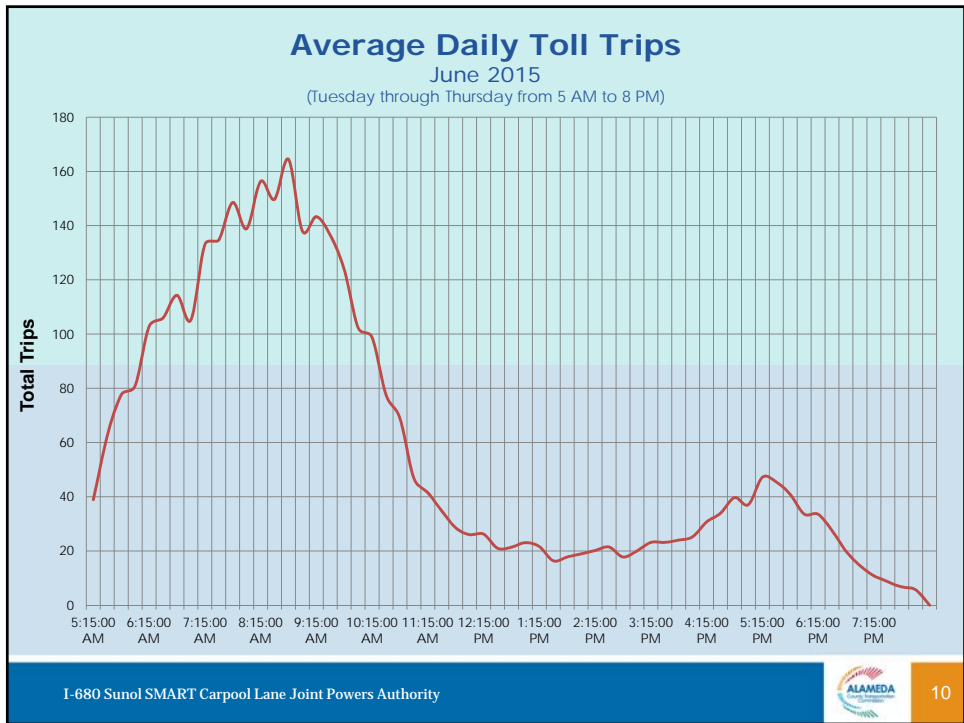
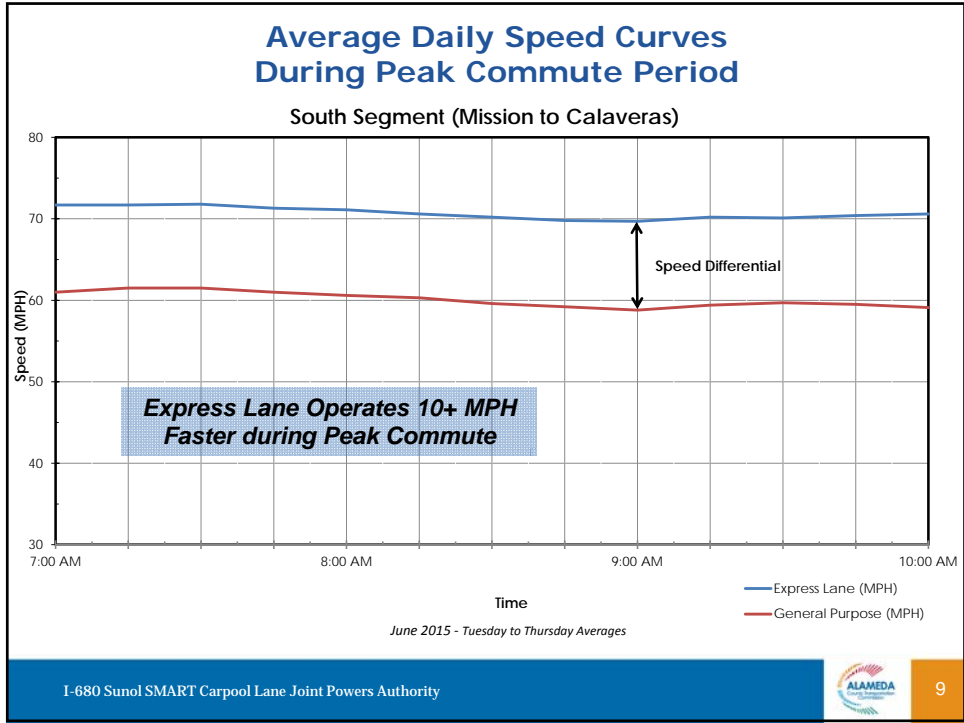

3

Average Daily Toll Trips - June Year over Year Comparison









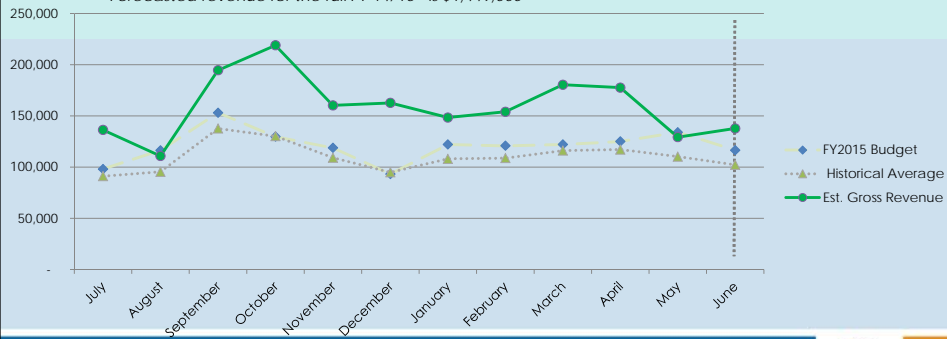
Revenue (Estimated Gross vs. Forecasted)

Revenue in FY 2014/15
(June 2015)

Estimated Gross Revenue **\$1,910,402** ↑ 32%

Forecasted* **\$1,449,000**

* Forecasted revenue for the full FY 14/15 is \$1,449,000



I-680 Sunol SMART Carpool Lane Joint Powers Authority



11



I-680 SB Express Lane Monthly Operations July 2015 Update

A Presentation for the
I-680 Sunol Smart Carpool Lane Joint Powers Authority (SSCLJPA)
September 14, 2015



Express Lane July 2015 Highlights

- Average Express Lane Speed: **>70 MPH**
- Max Speed Differential: **10-15 MPH**
- Average Daily Toll Paying Users: **3,167**
 - 75% Repeat Customers** → **91% Revenue**
 - 25% New Customers** → **9% Revenue**

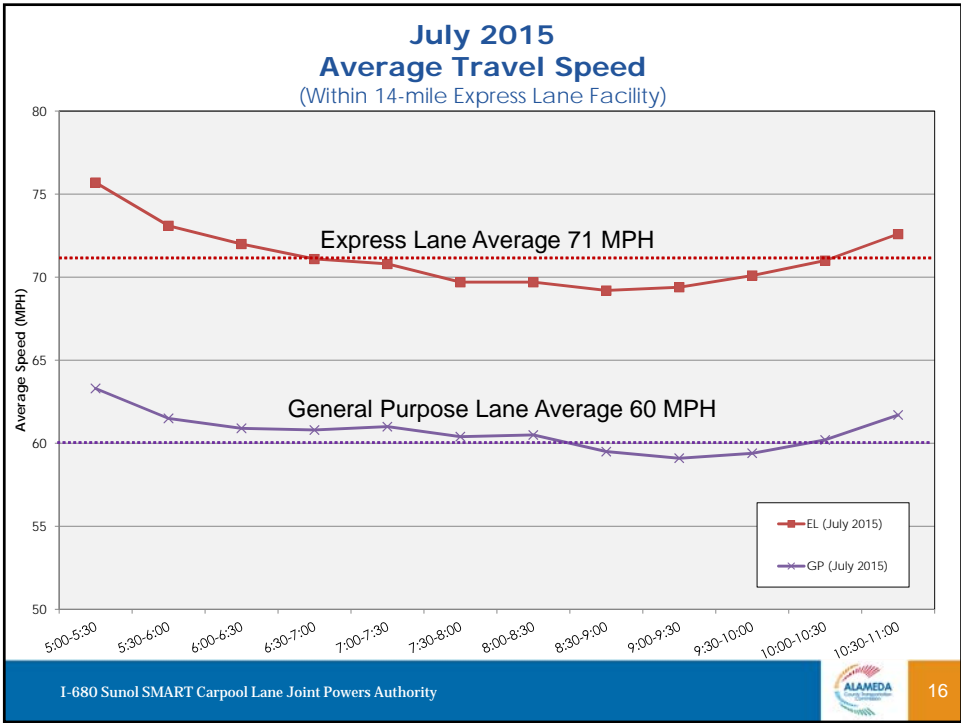
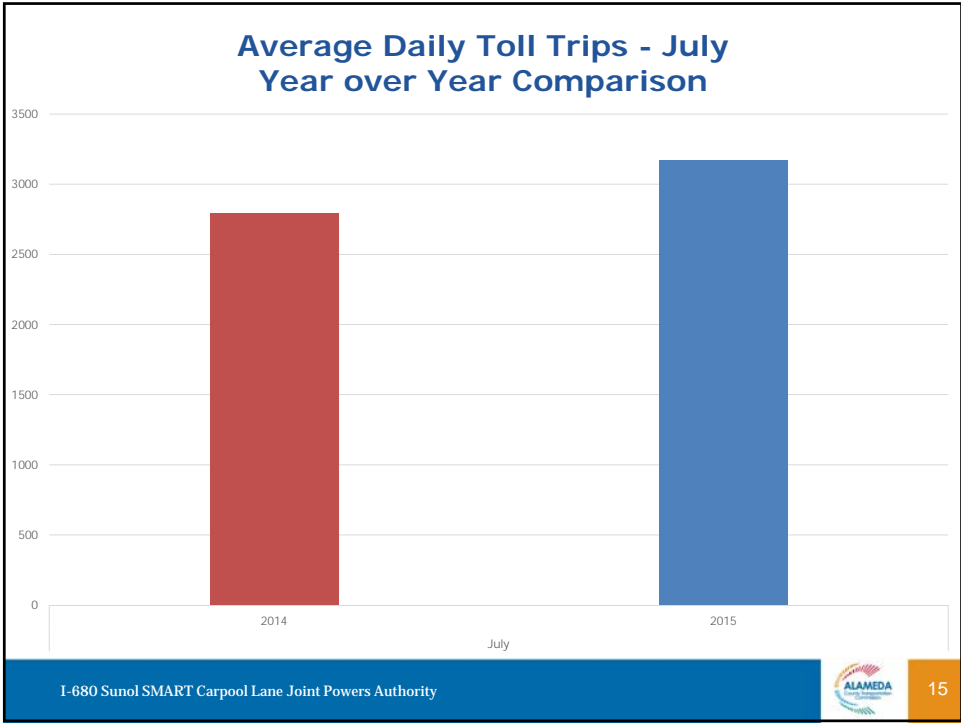


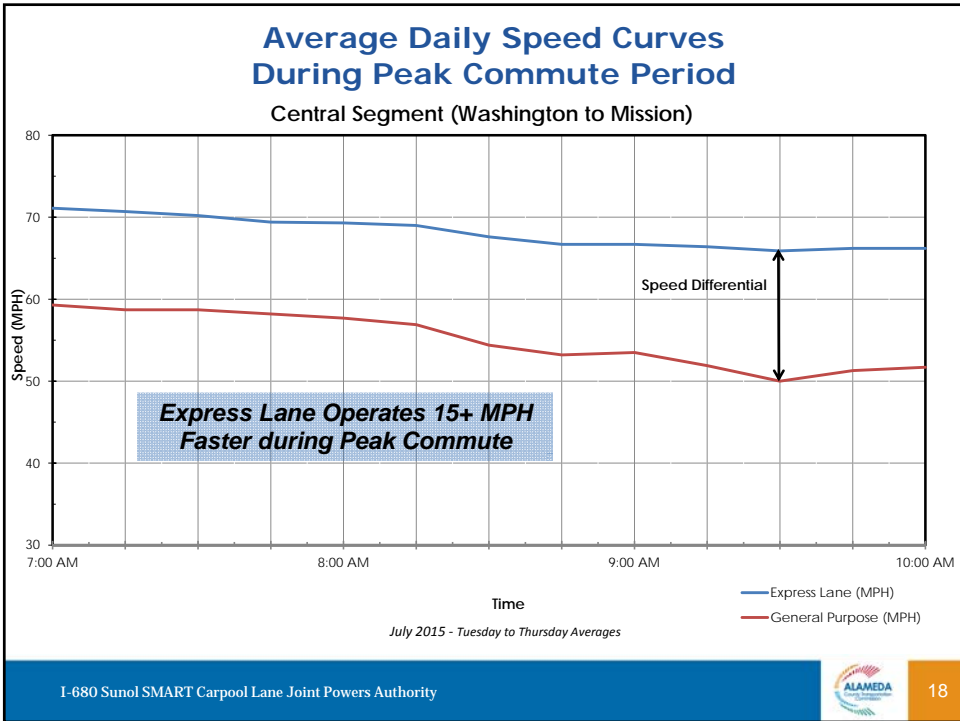
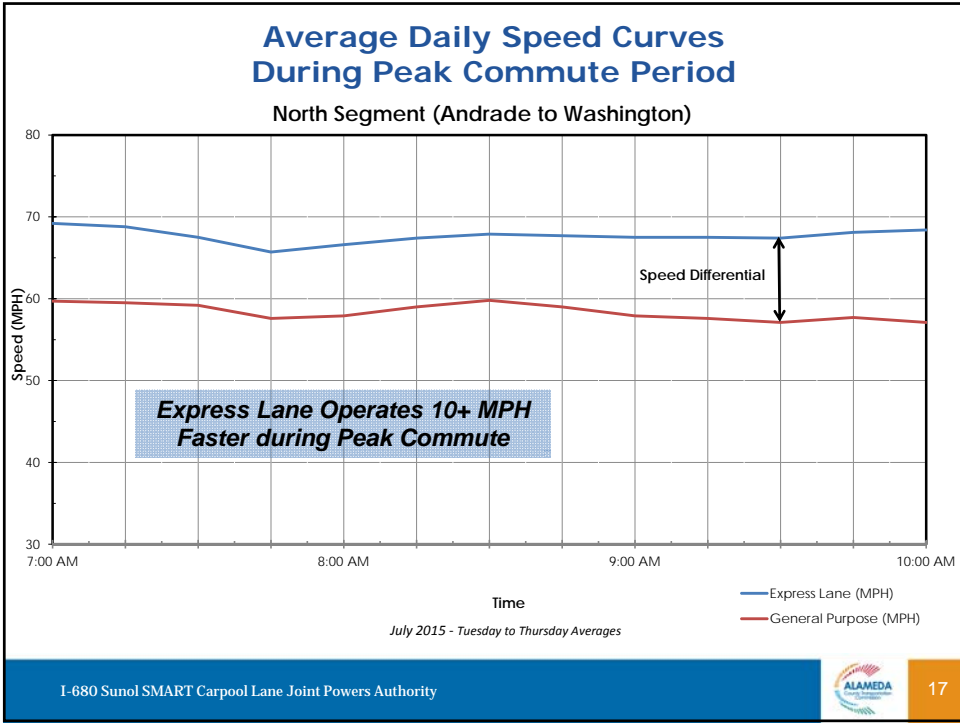
Corridor Throughput Year Over Year Comparison by Month

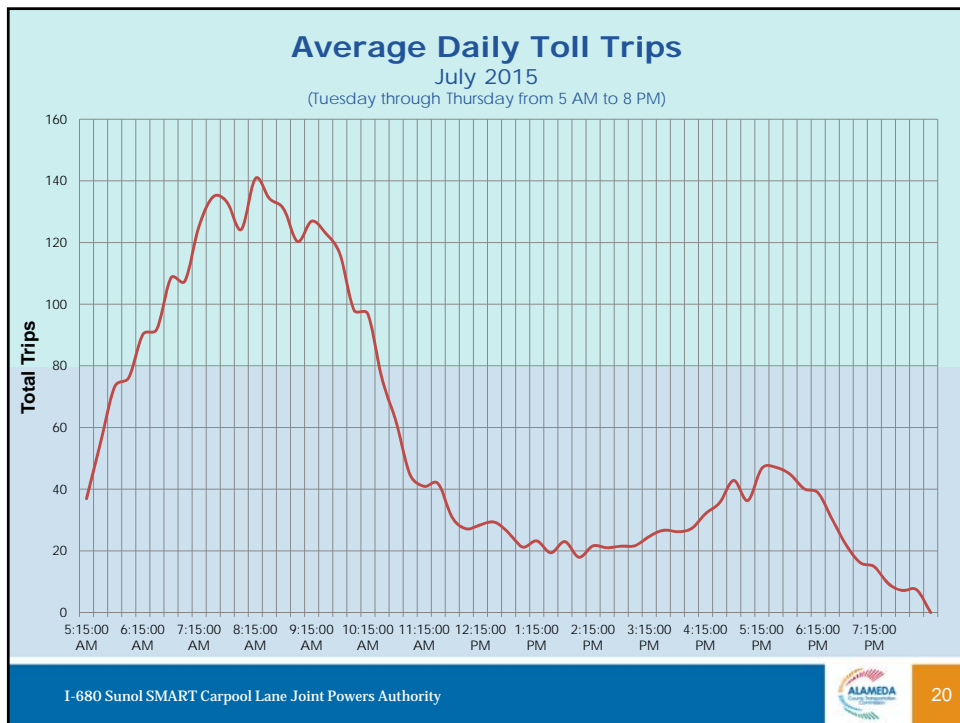
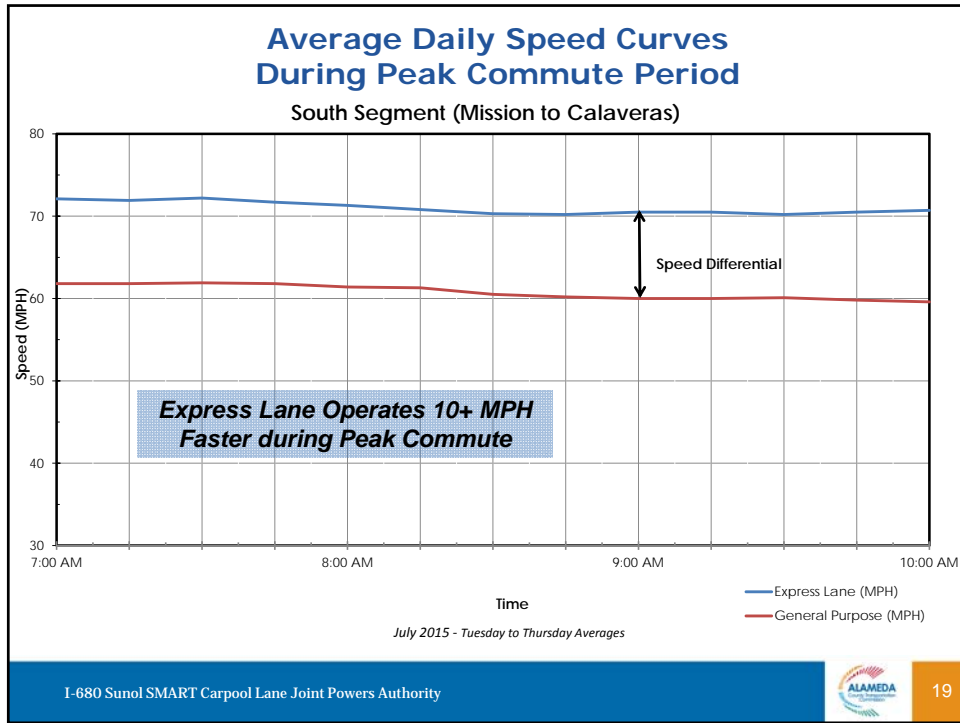
	July 2014	July 2015
Throughput in Ave. Peak Hour Volume	6,697 vph	7,269 vph
Throughput in % Capacity	88%	95%

7% ↑









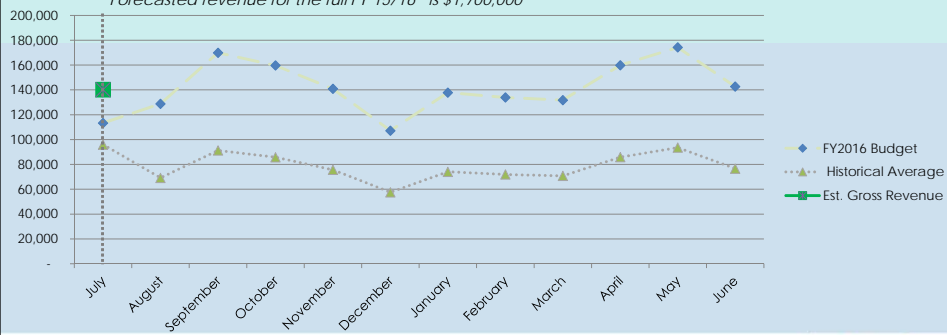
Revenue (Estimated Gross vs. Forecasted)

Revenue in FY 2015/16
(July 2015)

Estimated Gross Revenue **\$140,285** ↑ **19%**

Forecasted* **\$113,377**

* Forecasted revenue for the full FY 15/16 is \$1,700,000



Questions ?