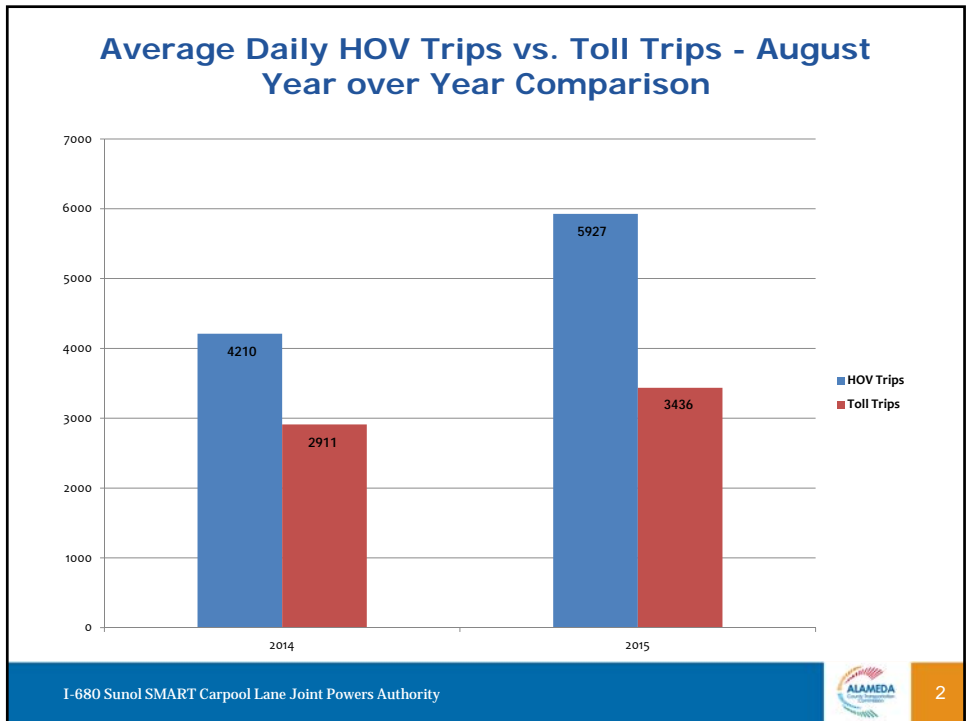




**EXPRESS LANE**  
FASTRAK TOLL TO  
262 Mission \$1.50  
237 Calaveras \$1.25  
HOV 2+ NO TOLL

## I-680 SB Express Lane Monthly Operations August 2015 Update

A Presentation for the  
I-680 Sunol Smart Carpool Lane Joint Powers Authority (SSCLJPA)  
October, 2015



## Hourly Traffic Volume During Peak Period

(7:00 – 10:00 a.m., Mon - Fri)

	August 2014	August 2015	2014 vs. 2015
Corridor	6,510 vph	7,113 vph	↑ 9%
HOV/Express Lane	928 vph	1,139 vph	↑ 23%
Toll-Paying Users	453 vph	489 vph	↑ 8%

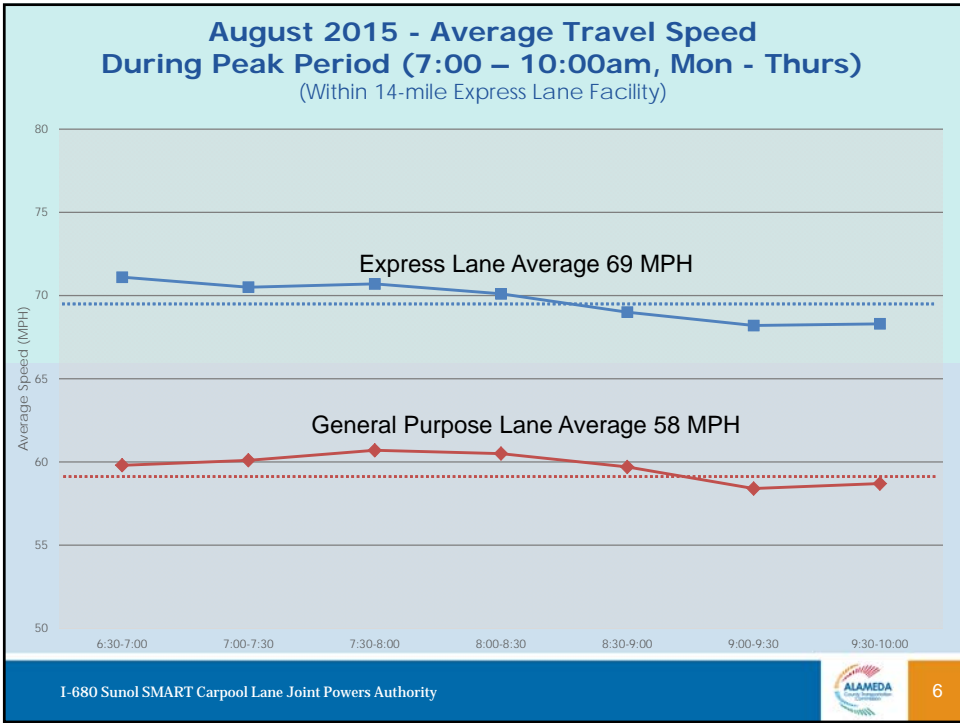
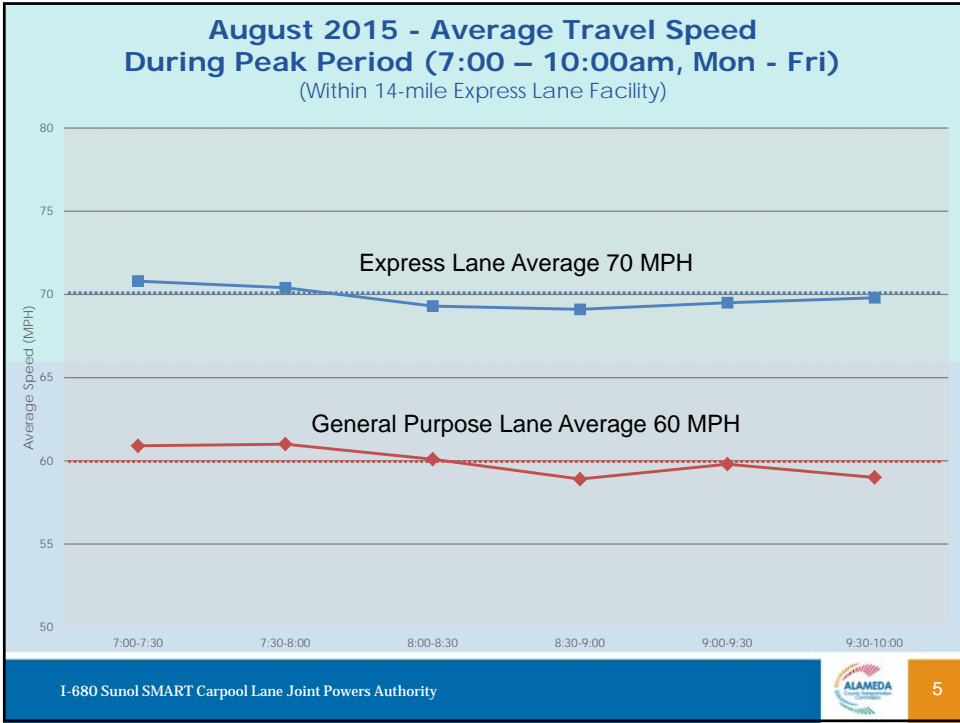
VPH = Vehicles Per Hour

## Hourly Traffic Volume During Peak Period

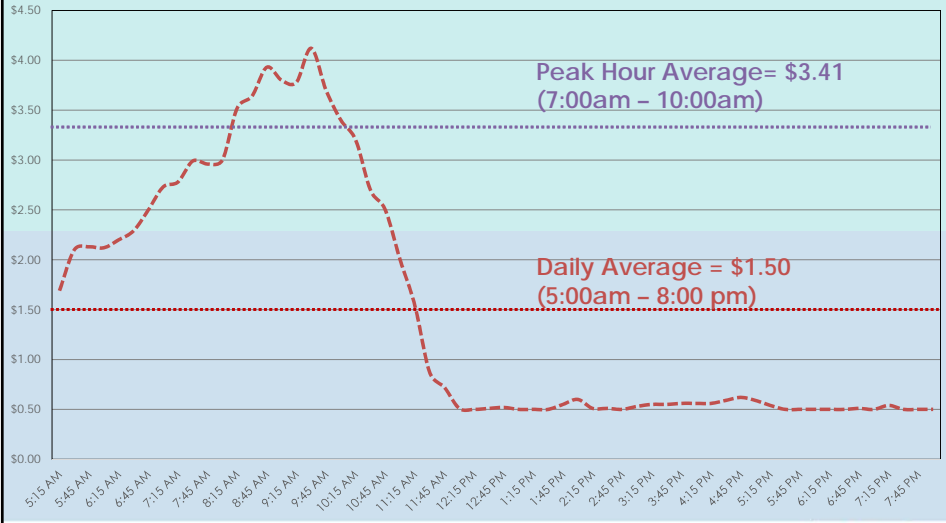
(7:00 – 10:00 a.m., Mon - Thurs)

	August 2014	August 2015	2014 vs. 2015
Corridor	6,672 vph	7,240 vph	↑ 9%
HOV/Express Lane	988 vph	1,201 vph	↑ 21%
Toll-Paying Users	490 vph	524 vph	↑ 7%

VPH = Vehicles Per Hour



## Average Toll Rate (Mon-Fri) Andrade - Calaveras

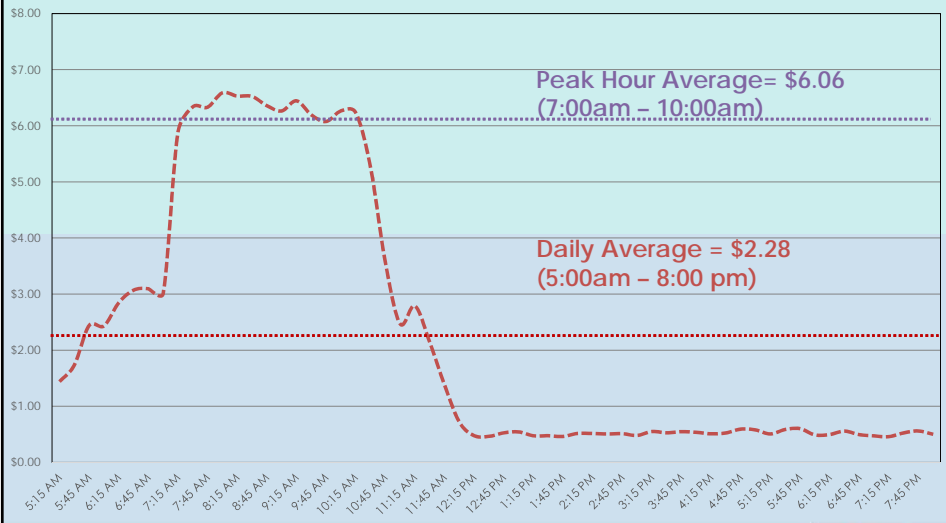


I-680 Sunol SMART Carpool Lane Joint Powers Authority



7

## Average Toll Rate (Mon-Thurs) Andrade - Calaveras



I-680 Sunol SMART Carpool Lane Joint Powers Authority



8

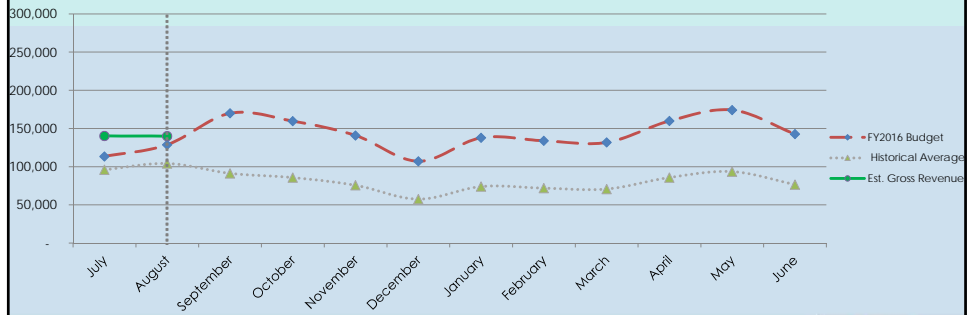
# Revenue (Estimated Gross vs. Forecasted)

Revenue in FY 2015/16  
(Cumulative through August 2015)

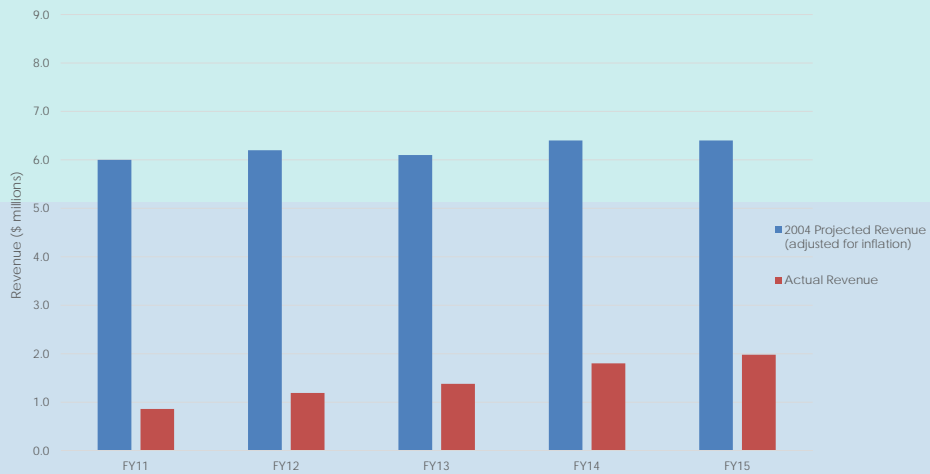
**Estimated Gross Revenue** **\$280,301** **↑ 16%**

**Forecasted\*** **\$242,189**

\* Forecasted revenue for the full FY 15/16 is \$1,700,000



# Revenue (2004 Projection vs. Actual)





I-680 Sunol SMART Carpool Lane Joint Powers Authority



11