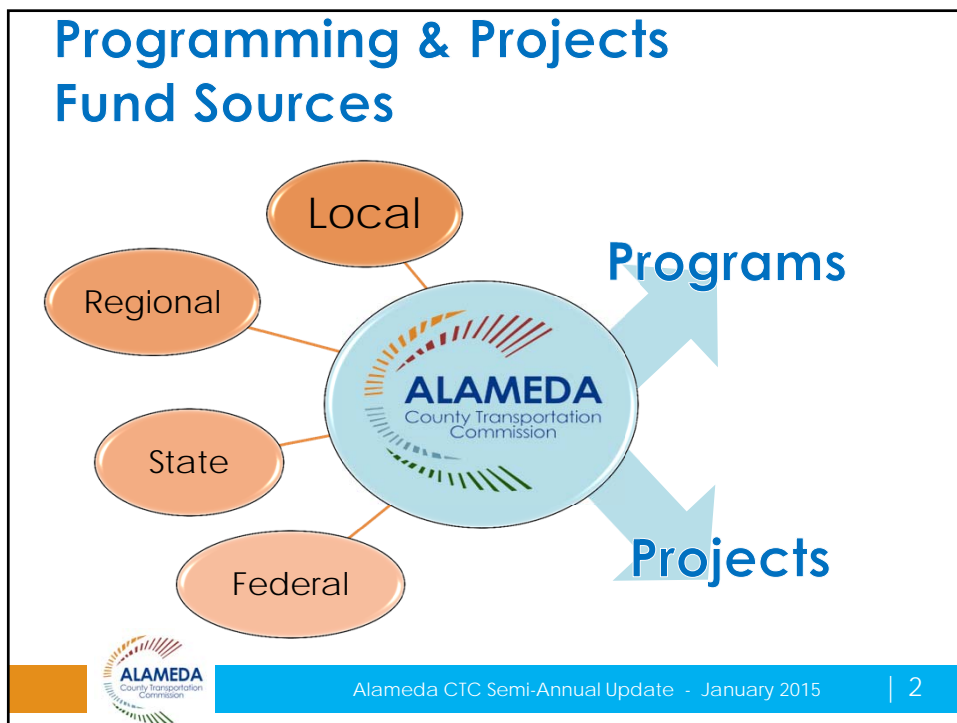




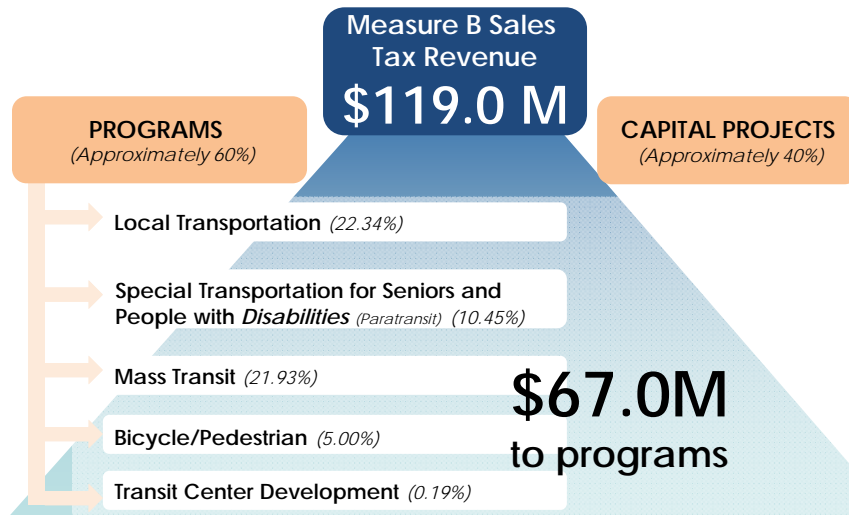
## Semi-Annual Update... “We Deliver”

Prepared for the Citizens Watchdog Committee (CWC)

January 12, 2015

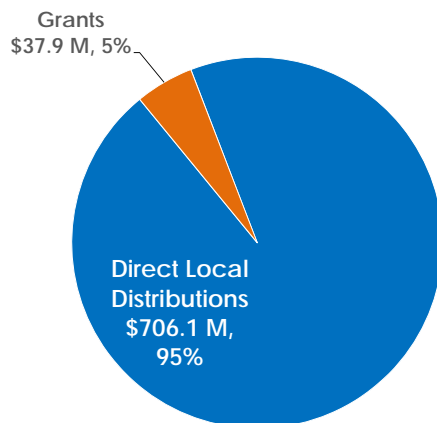


## Measure B Distributions FY2013-14



## Measure B Programs

Total: \$744.0 million to date



- **Local Choice:** For agencies to fund local priorities
- **Supports countywide infrastructure and services**
- **Invest in all modes**
- **Grant Programs**
  - Bicycle/pedestrian
  - Transit operations
  - Paratransit services
  - Transit oriented developments



## Measure B Major Accomplishments

- Reliable and significant funding for fixing potholes on local streets and roads
- Reliable and significant funding for bicycle and pedestrian safety and connectivity



## Measure B Major Accomplishments

(continued)

- Reliable and significant funding for:
  - AC Transit
  - Wheels
  - Altamont Commuter Express,
  - Ferries
  - Union City Transit
- Safe Routes to Schools Program
- Reliable and significant Paratransit funding



## Program Monitoring

- In 2012, Alameda CTC implemented Timely Use of Funds and Reserve Policies
- Enhanced monitoring in place
- Unspent balances have declined by over 25% since policy
- Next Steps: Review Compliance Reports for FY 13/14



## Measure B Discretionary Programs

### ✓ Grant programs support:

- Bicyclists / Pedestrians
- Transit
- Paratransit



## Measure B Bicycle/Pedestrian Grant Programs

- \$2.3 million for 8 Active Projects
- Gap closures
- Education and safety programs
- Capital improvements



## Christie Ave Bay Trail Gap Closure



### BENEFITS

- Increases bike/pedestrian safety
- Enhances access
- Provides gap closure

City of Emeryville





## Buchanan Marin Bikeway Phase III



### BENEFITS

- Increases Safety
- Increases access
- Increases network connectivity

City of Albany



Alameda CTC Semi-Annual Update - January 2015

| 11

## Bike-Go-Round Education/Safety



### BENEFITS

- Promotes safe riding techniques among youth and adults
- Encourages bike/pedestrian travel



Cycles of Change



Alameda CTC Semi-Annual Update - January 2015

| 12

## Measure B Transit Grant Programs

- \$2.5 million to 4 Active Projects
- Expansion and enhancement of transit operations
- Connectivity and congestion reduction



## LAVTA

Route 10 & Rapid Route Operations  
Route 12v, 20x, and 70x Operations

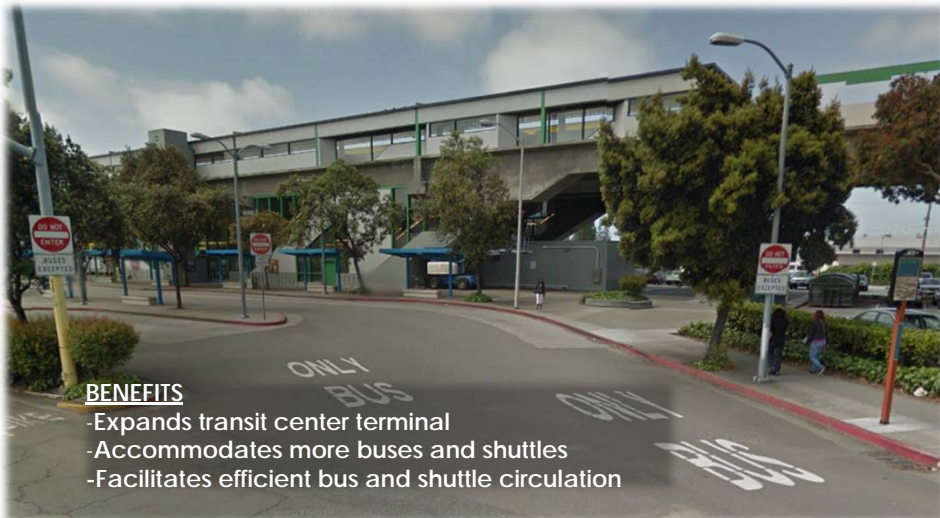


### BENEFITS

- Improves access to BART Stations and local transit services
- Connects commuters and residents to business centers
- Reduces congestion on arterials and highways



## Transit Center at San Leandro BART



### BENEFITS

- Expands transit center terminal
- Accommodates more buses and shuttles
- Facilitates efficient bus and shuttle circulation

AC Transit



Alameda CTC Semi-Annual Update - January 2015

| 15

## Measure B Paratransit Grants

- \$2.2 million to 14 Active Programs
- Largest paratransit allocation of any Bay Area sales tax measure
- Supports Americans with Disabilities Act (ADA) paratransit and city-based programs



Alameda CTC Semi-Annual Update - January 2015

| 16



## Tri-City Mobility Management/Travel Training



### BENEFITS

- Educates seniors and people with disabilities
- Provides travel techniques and tips
- Promotes independent mobility

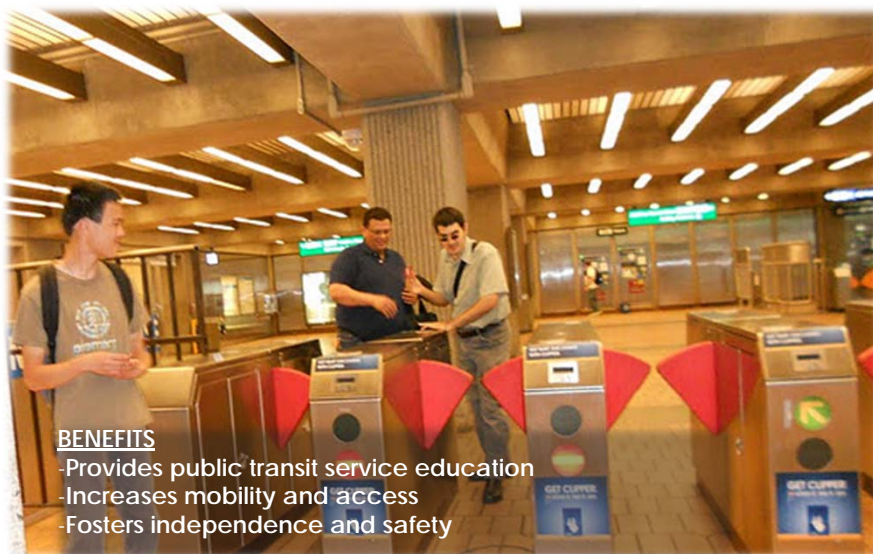
City of Fremont



Alameda CTC Semi-Annual Update - January 2015

| 17

## Mobility Matters Project



### BENEFITS

- Provides public transit service education
- Increases mobility and access
- Fosters independence and safety

Center for Independent Living



Alameda CTC Semi-Annual Update - January 2015

| 18

## Volunteer Assisted Senior Transportation



### BENEFITS

- Transports seniors and people with disabilities
- Provides same-day transportation access to medical care
- Provides Door-to-Door services



### Senior Support Program of the Tri-Valley



Alameda CTC Semi-Annual Update - January 2015

| 19

## Alameda CTC Grant Programs

- Investments in local projects and programs throughout the County
- Closes infrastructure and service gaps
- Expands transportation services for seniors and people with disabilities
- Next Steps - continue grant implementation

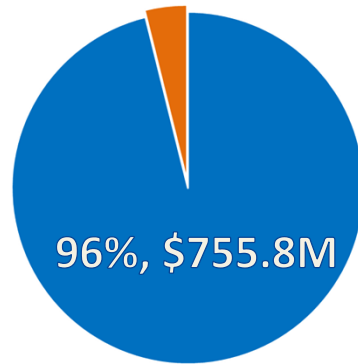


Alameda CTC Semi-Annual Update - January 2015

| 20

## Measure B Projects:

Total: \$786.4 million



- **\$755.8 million** allocated to date delivering 96% of the program in 12 years.

■ 2000 Measure B - Allocated    ■ 2000 Measure B - Un-Allocated



## Remaining Project Commitments

### 2000 MEASURE B

Project No.	Project Title	Remaining Commitments (\$ x 1,000)
01	ACE Capital Improvements	2,000
08A	I-680 Express Lane - Southbound	4,500
08B	I-680 Express Lane - Northbound	4,500
09	Iron Horse Transit Route	6,267
25	Dumbarton Corridor Improvements (Central Ave. Overpass)	13,289
Remaining Allocation Total		30,556



## 2000 Measure B Major Investments

- Isabel Interchange at I-580
- Widen 84 to expressway
- 11 miles of carpool lanes on I-580
- Implemented the first Express Lane in the Bay Area
- Deploying Innovative technology on 22 miles of I-80



# Active Project Status Updates





## Route 84 (PN 24)

- Route 84 Expressway – Jack London Blvd. to Concannon Blvd.
  - ✓ Opened to traffic June 5, 2014
- Route 84 Expressway – Concannon Blvd. to Ruby Hill:
  - Design and right of way activities ongoing
  - Construction to begin fall 2015



## I-580 Corridor (PN 14 & 26)

✓ In Construction



- Eastbound Auxiliary Lanes
  - Construction completion fall 2015
- Westbound HOV Lane – Greenville Rd. to Isabel Ave.
  - Construction completion winter 2016
- Westbound HOV Lane – Isabel Ave. to San Ramon/Foothill Rd.
  - Construction completion summer 2015
- I-580 Corridor – Eastbound & Westbound
  - Construction completion fall 2015



## I-880 Corridor (PN 27)

### ➤ I-880 Southbound HOV:

- Construction completion summer 2015

I-880 Southbound HOV - North Seg.



I-880 Southbound HOV - South Seg.



### ➤ I-880 North Safety and Operational Improvements at 23rd and 29th Avenues:

- Construction completion spring 2018



## I-80 Corridor (PN 27)

### ➤ I-80 SMART Corridor:

- Installation of overhead gantries along I-80 from the Bay Bridge to the Carquinez Bridge
- System integration and testing ongoing
- Corridor operational in spring 2015



## Other Projects

- **Bus Rapid Transit (PN07)**
  - Construction start in 2015
  - Completion 2017
- **I-680 NB Express lane (PN 08)**
  - Environmental Document in circulation
  - Approval expected fall 2015
- **I-880 / Broadway Jackson Improvements (PN 10)**
  - Environmental approval phase started
  - Expected to take three years



## Recently Advertised

- **Downtown Oakland Streetscape Improvements Project – Latham Square (PN 4, City of Oakland)**
  - Advertised for construction on December 16, 2014
  - Construction schedule: March 2015 – December 2015
- **Route 92/Clawiter – Whitesell Interchange and Reliever Route (PN 15, City of Hayward)**
  - Advertised for construction on December 3, 2014
  - Construction schedule: March 2015 – October 2016



## BART Oakland Airport Connector (PN 3) Revenue Service Begins



Opened to the public November 22, 2014



Alameda CTC Semi-Annual Update - January 2015

| 31

## BART Warm Springs Extension (PN 2) Construction Completion late 2015 \$890 M



Alameda CTC Semi-Annual Update - January 2015

| 32