
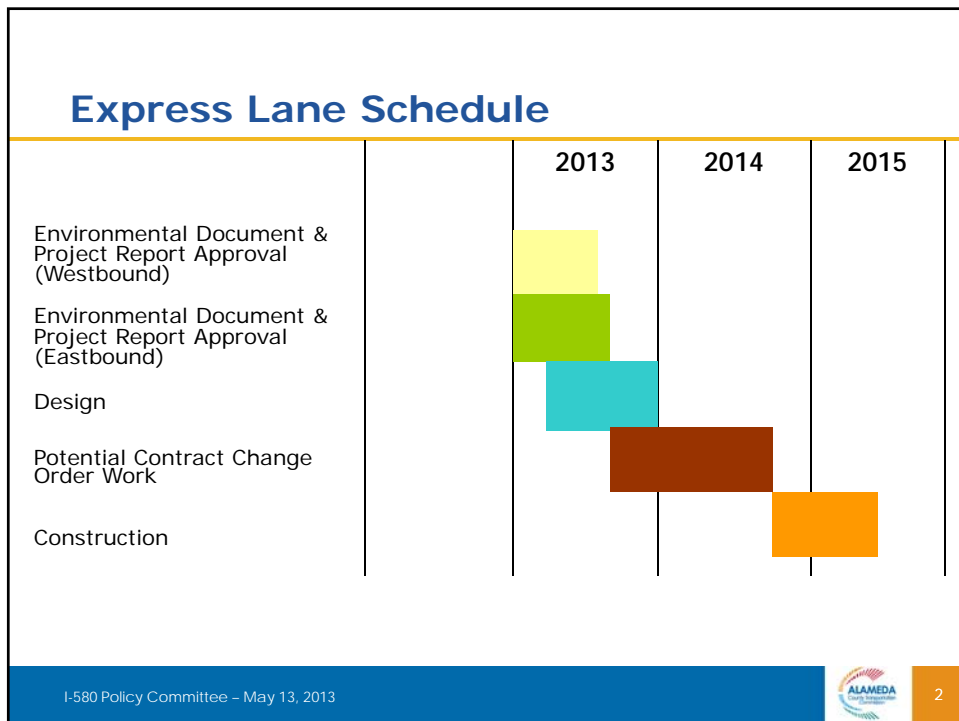
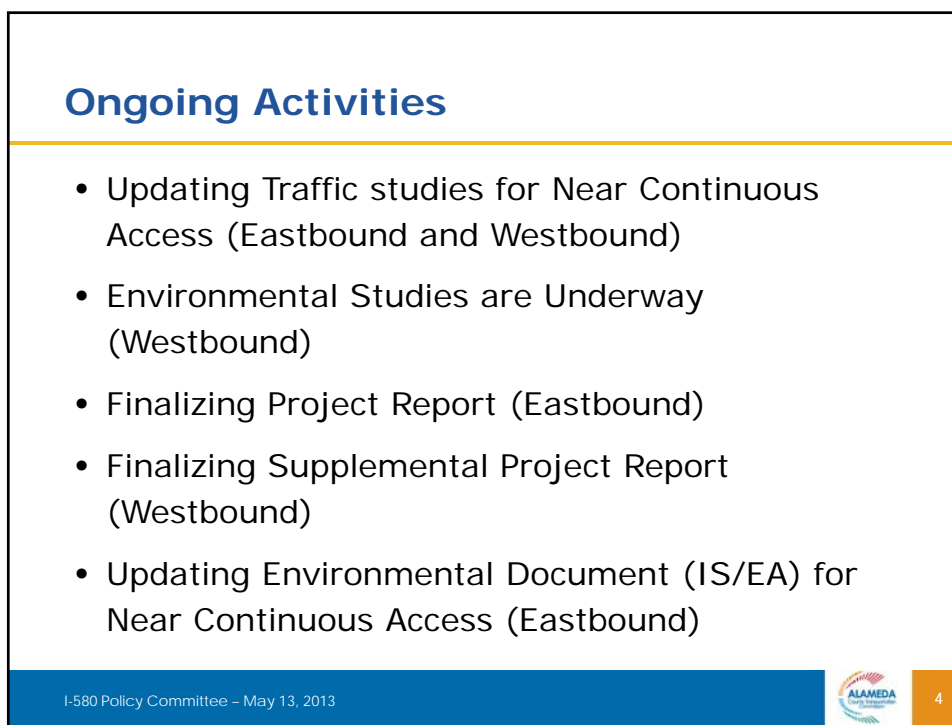
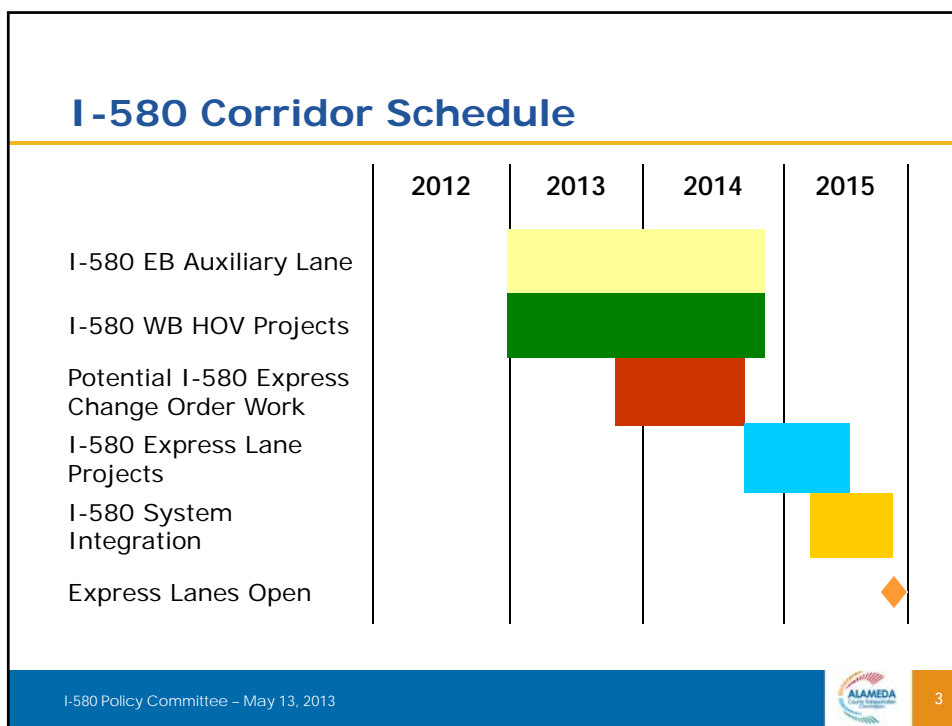


**Project Delivery Monthly Progress Report**  
*ALA580 EXPRESS LANE CORRIDOR PROJECTS*

A Presentation for the  
I-580 Express Lane Policy Committee  
May 13, 2013



## Upcoming Activities

- Public Outreach (Westbound) – May 14, 2013
- Draft Environmental Circulation (Eastbound) – June 2013.
- Public Meeting (Eastbound) – July 2013
- Final Environmental Document and Project Approval (Westbound) – June 2013
- Final Environmental Document and Project Approval (Eastbound) – August 2013

I-580 Policy Committee – May 13, 2013



## Delivery Strategy

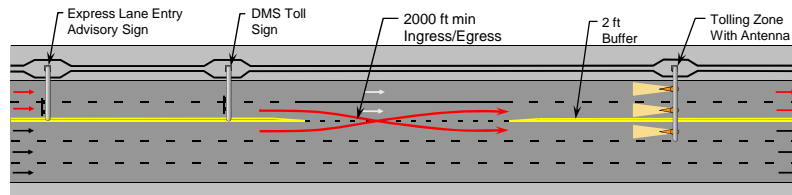
- Implement Near Continuous Access Configuration
- Combine EB & WB Express Lane Projects (Design & Construction Phase for Civil and System Integration Contracts)
- Implement Change Order Opportunities on Existing Contracts

I-580 Policy Committee – May 13, 2013

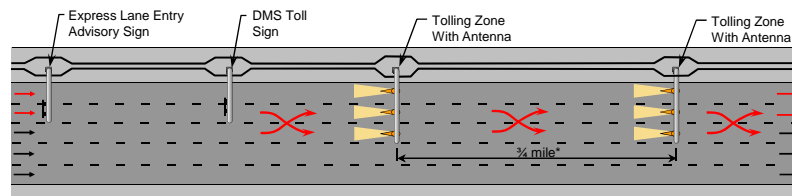


6

## Limited Access vs. Continuous Access



Limited Access



Continuous Access (Similar to HOV Lane)

**Legend and Notes:**

- Express Lanes →
- General Purpose Lanes →
- \* Preliminary, exact spacing to be determined

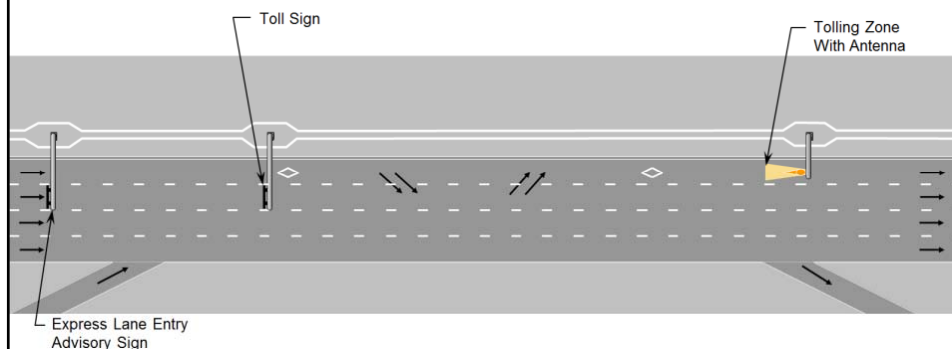
I-580 Policy Committee – May 13, 2013



7

## Continuous Access

- Similar to an HOV Lane, but Tolloed
- Buffer Separation at Hot Spots



I-580 Policy Committee – May 13, 2013



8

## I-580 Access Locations



## Continuous Access Implementation

### Key Elements Under Development

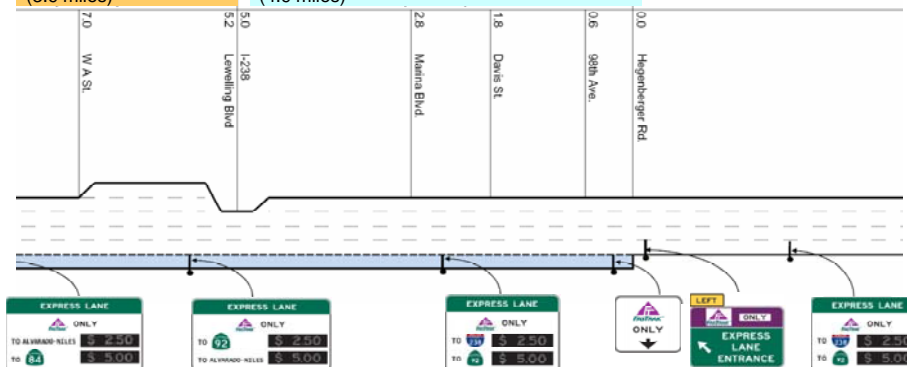
- Traffic & Revenue Study
- Concept of Operations/System Eng. Mgmt. Plan
- Software and Hardware Design
- Pricing Strategy - Zone Tolling
- Toll Sign/Reader Locations
- Automated Violation Enforcement

## Zone Tolling

### Conceptual Plan for Implementation on I-880, Courtesy MTC

Zone 2: 1-238 to SR 92  
(3.9 miles)

Zone 1: Hegenberger to I-238  
(4.9 miles)

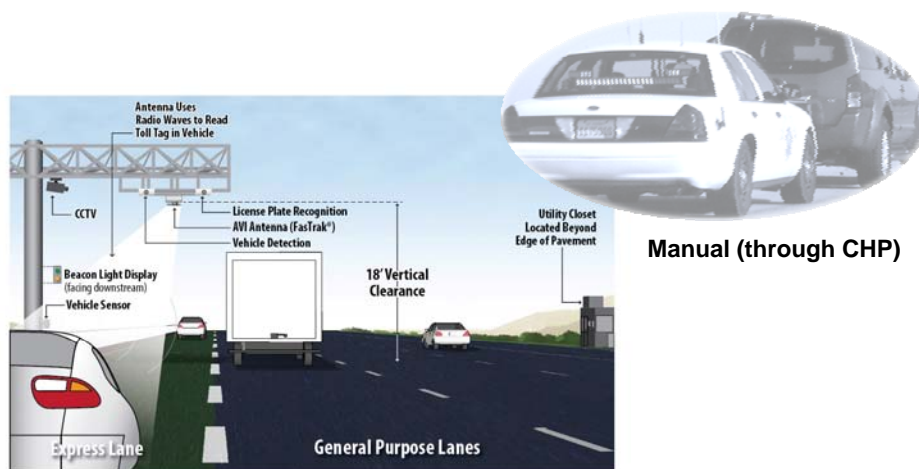


I-580 Policy Committee – May 13, 2013



11

## Enforcement



Automated (via VES)

I-580 Policy Committee – May 13, 2013



12

## Continuous Access Implementation

### Automated Violation Enforcement

Will Require ...

- License Plate Read
- Switchable Tag
- Transponder for HOV



I-580 Policy Committee – May 13, 2013



13

## I-580 Express Lane Funding

Project Phase	Funding Source (\$ x million)							
	ARRA	Federal Earmark	RM2	TVTC	TCRP Deferred	Local (Meas. B)	TBD	Total
PA&ED			1.39	2.17	0.10			3.66
PS&E			0.14	1.53	3.07			4.74
Sys. Int.	7.50				1.00		8.80	17.30
ROW				0.37				0.37
Const. Support			0.60	0.71	0.50	0.78	1.48	4.07
Construct Cap		1.00	1.92		1.33	0.69	19.42	24.36
O&M						0.18	0.30	0.48
<b>TOTAL</b>	<b>7.50</b>	<b>1.00</b>	<b>4.05</b>	<b>4.78</b>	<b>6.0</b>	<b>1.65</b>	<b>30.00</b>	<b>54.98</b>
<b>Total Project Cost: \$54.98 M</b>								

I-580 Policy Committee – May 13, 2013



## Questions / Answers