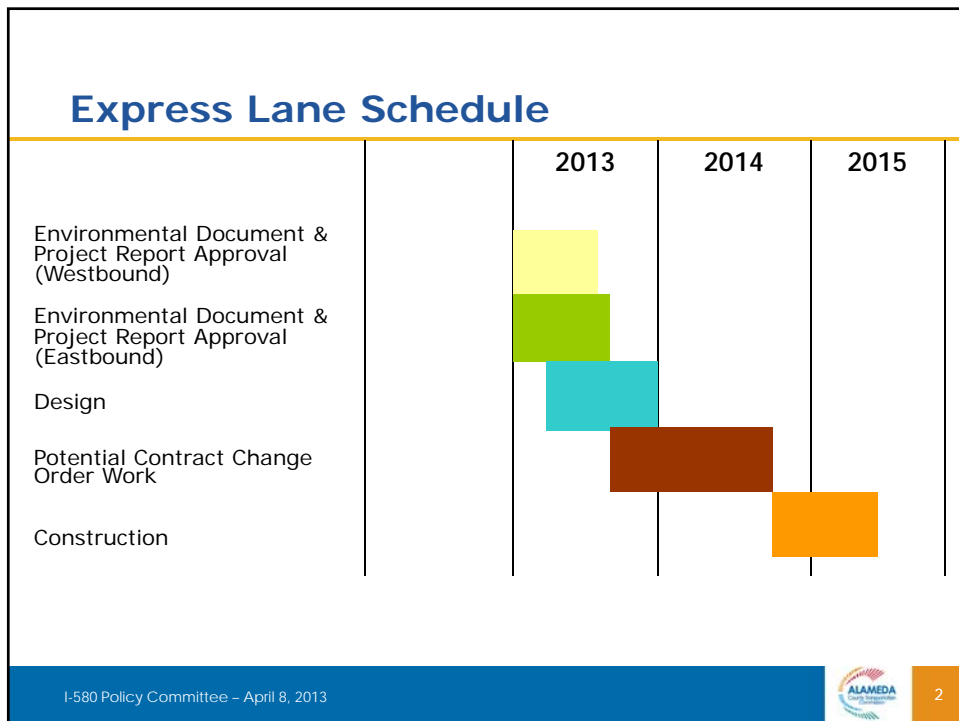
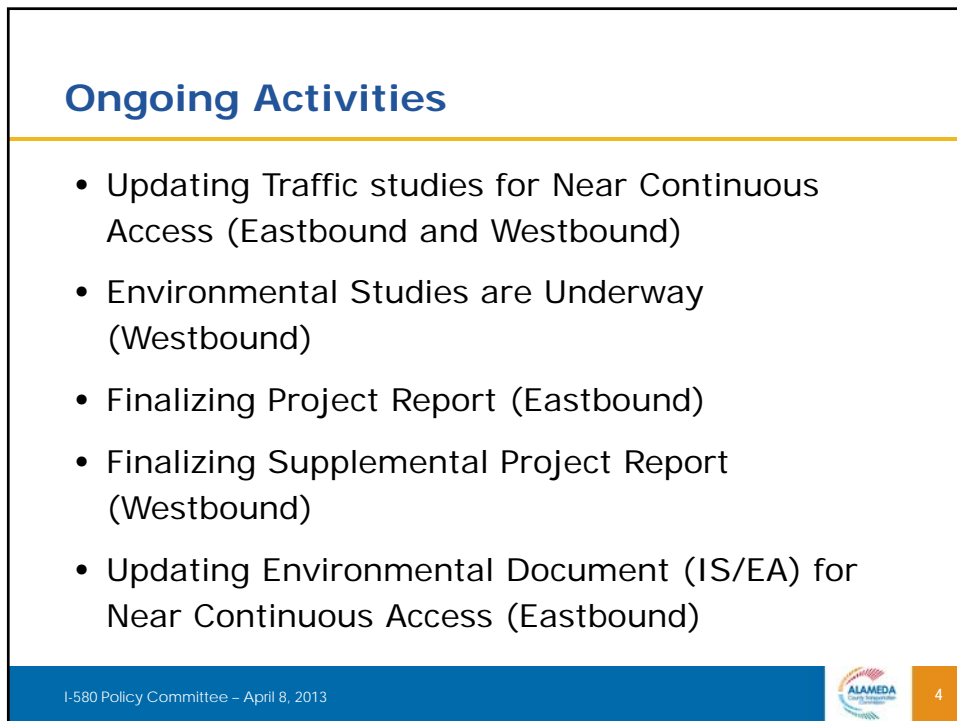
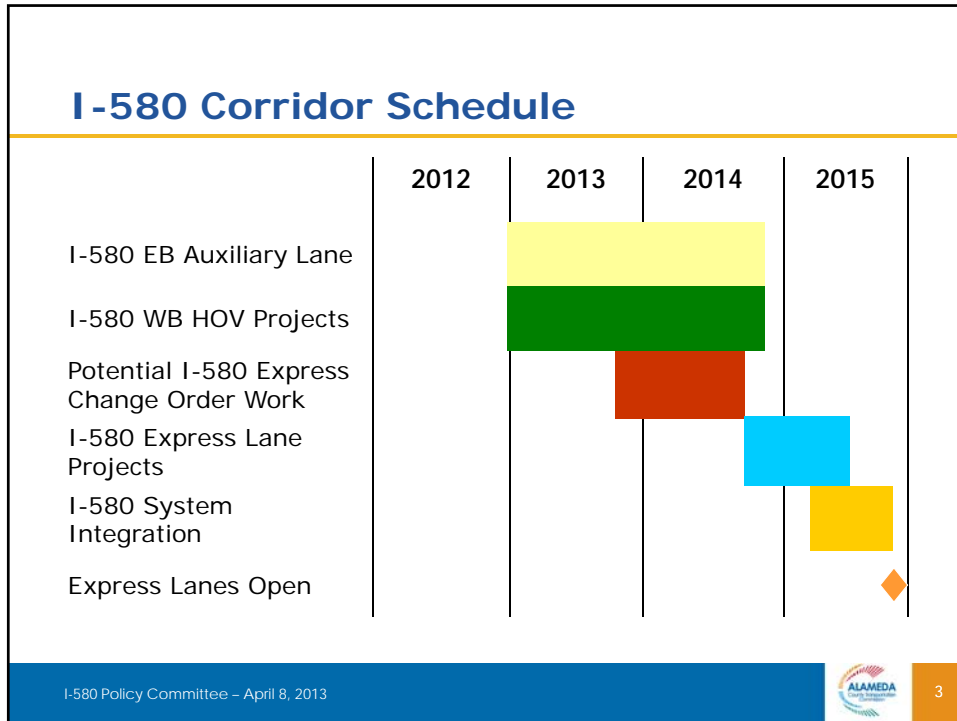




Project Delivery Status Update
ALA580 EXPRESS LANE CORRIDOR PROJECTS

A Presentation for the
I-580 Express Lane Policy Committee
April 8, 2013



Delivery Strategy

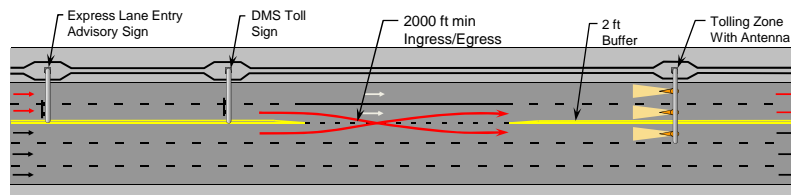
- Implement Near Continuous Access Configuration
- Combine EB & WB Express Lane Projects (Design & Construction Phase for Civil and System Integration Contracts)
- Implement Change Order Opportunities on Existing Contracts

I-580 Policy Committee – April 8, 2013

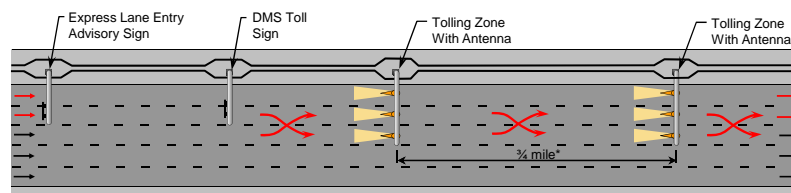


5

Limited Access vs. Continuous Access



Limited Access



Continuous Access (Similar to HOV Lane)

Legend and Notes:

- Express Lanes →
 General Purpose Lanes →
 * Preliminary, exact spacing to be determined

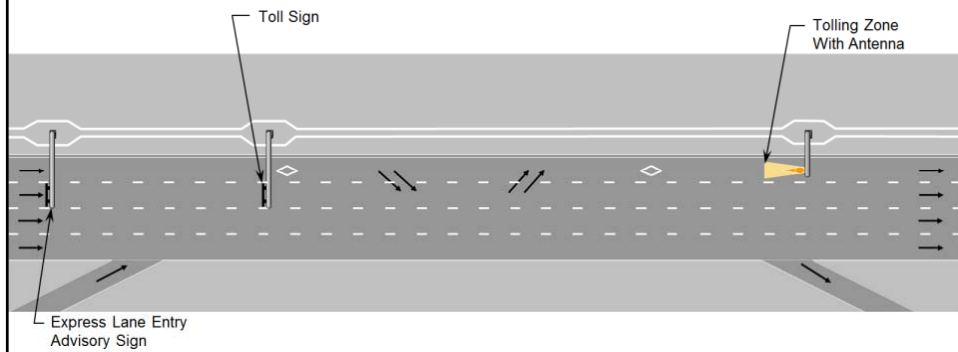
I-580 Policy Committee – April 8, 2013



6

Continuous Access

- Similar to an HOV Lane, but Tolloed
- Buffer Separation at Hot Spots

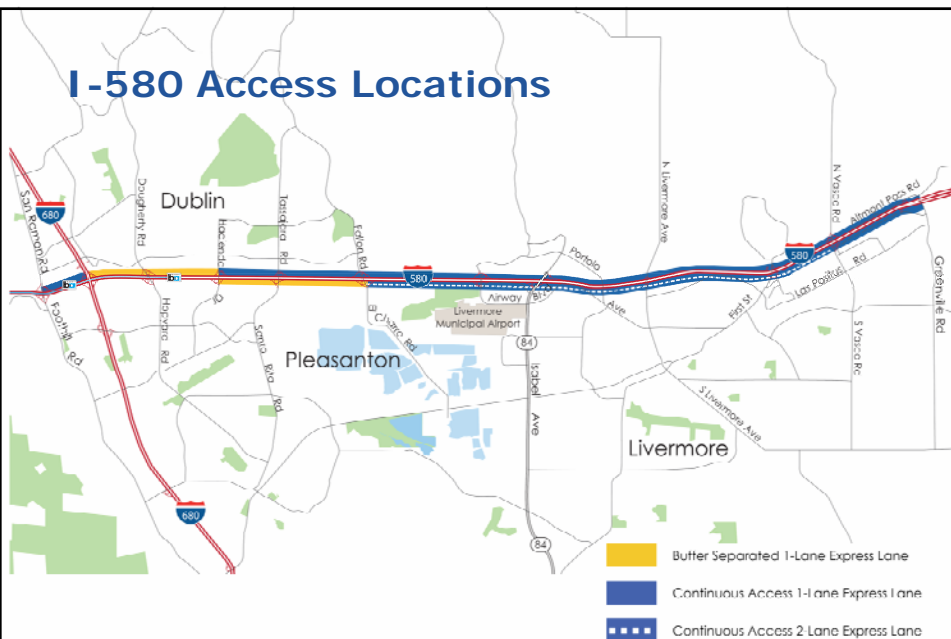


I-580 Policy Committee – April 8, 2013



7

I-580 Access Locations



I-580 Policy Committee – April 8, 2013



8

Continuous Access Implementation

Key Elements Under Development

- Traffic & Revenue Study
- Concept of Operations/System Eng. Mgmt. Plan
- Software and Hardware Design
- Pricing Strategy - Zone Tolling
- Toll Sign/Reader Locations
- Automated Violation Enforcement

I-580 Policy Committee – April 8, 2013



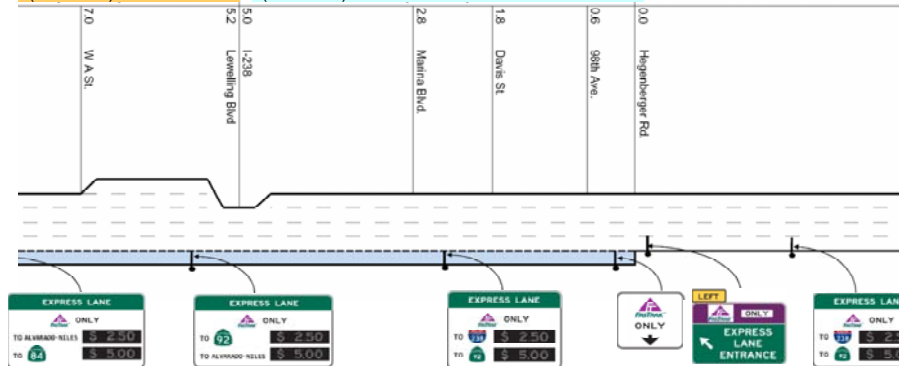
9

Zone Tolling

Conceptual Plan for Implementation on I-880, Courtesy MTC

Zone 2: 1-238 to SR 92
(3.9 miles)

Zone 1: Hegenberger to I-238
(4.9 miles)

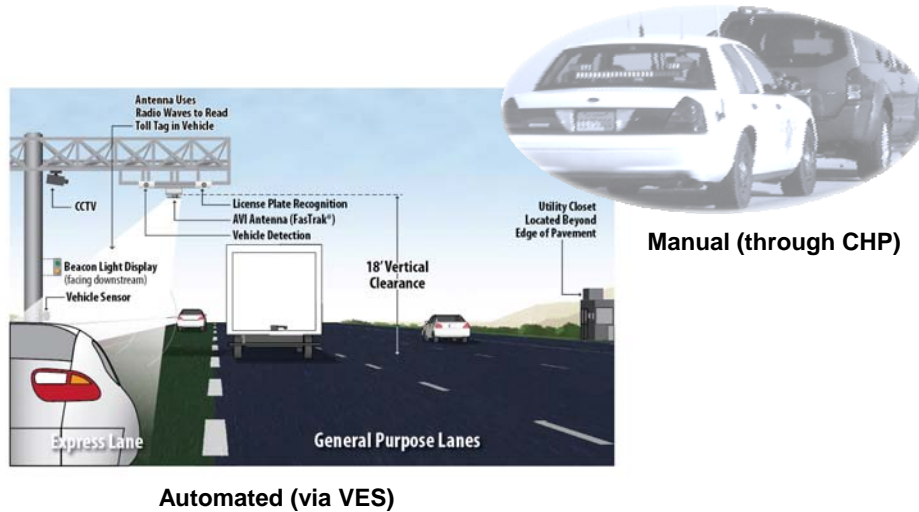


I-580 Policy Committee – April 8, 2013



10

Enforcement



I-580 Policy Committee – April 8, 2013



11

Continuous Access Implementation

Automated Violation Enforcement

Will Require ...

- License Plate Read
 - Switchable Tag
- Transponder for HOV



I-580 Policy Committee – April 8, 2013



12

I-580 Express Lane Funding

Project Phase	Funding Source (\$ x million)							
	ARRA	Federal Earmark	RM2	TVTC	TCRP Deferred	Local (Meas. B)	TBD	Total
PA&ED			1.39	2.17	0.10			3.66
PS&E			0.14	1.53	3.07			4.74
Sys. Int.	7.50				1.00		8.80	17.30
ROW				0.37				0.37
Const. Support			0.60	0.71	0.50	0.78	1.48	4.07
Construct Cap		1.00	1.92		1.33	0.69	16.42	21.36
O&M						0.18	0.30	0.48
TOTAL	7.50	1.00	4.05	4.78	6.0	1.65	27.00	51.98
Total Project Cost: \$51.98 M								

I-580 Policy Committee – April 8, 2013



Questions / Answers

I-580 Policy Committee – April 8, 2013



14