



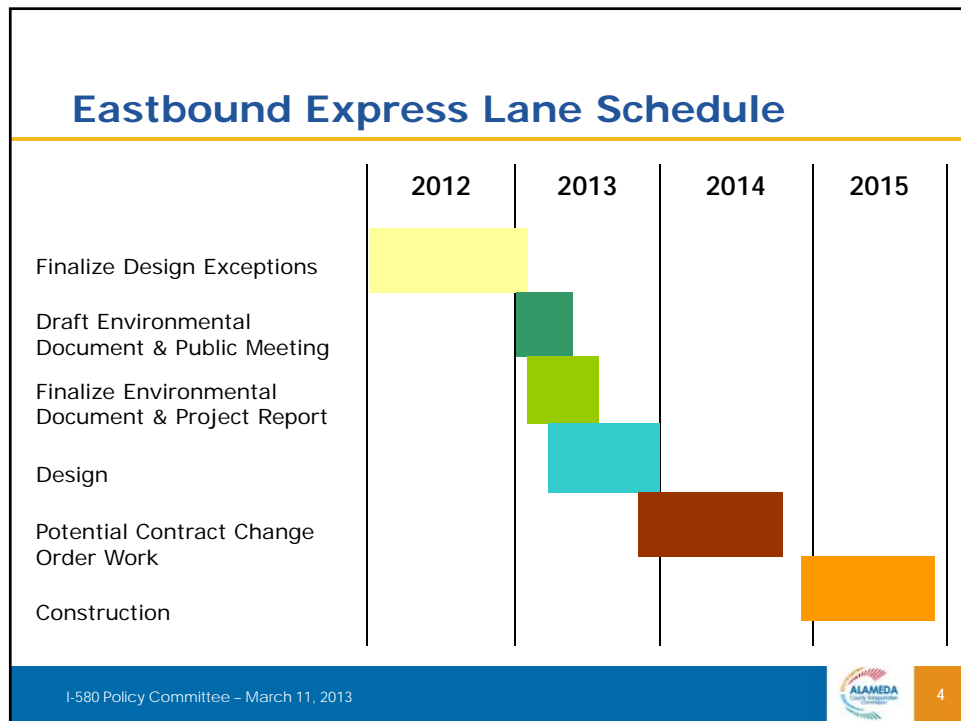
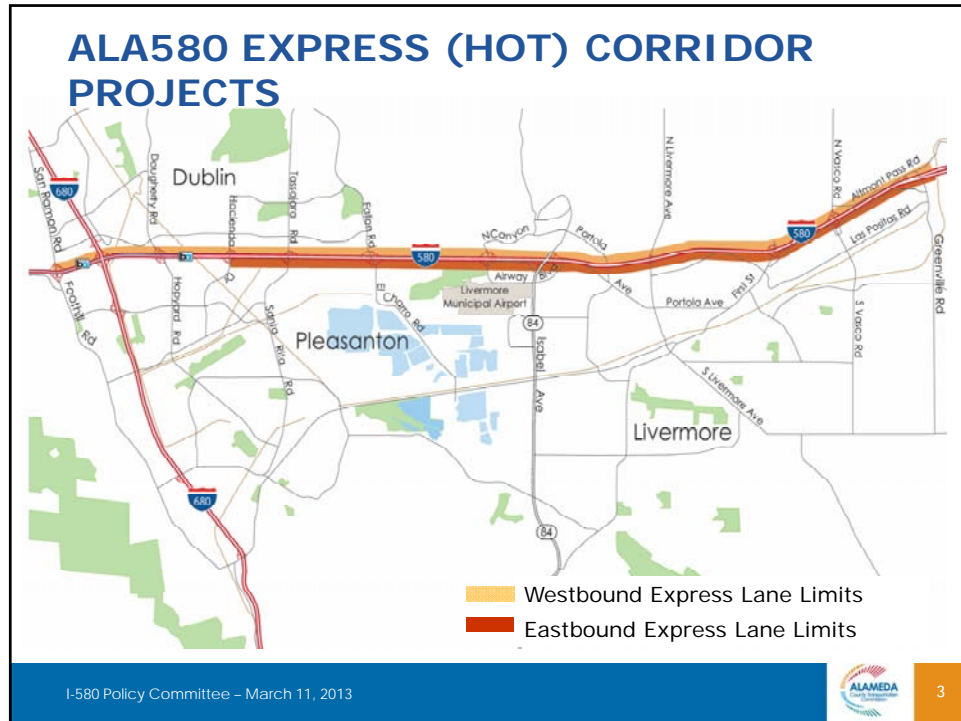
Project Delivery Status Update
ALA580 EXPRESS LANE CORRIDOR PROJECTS

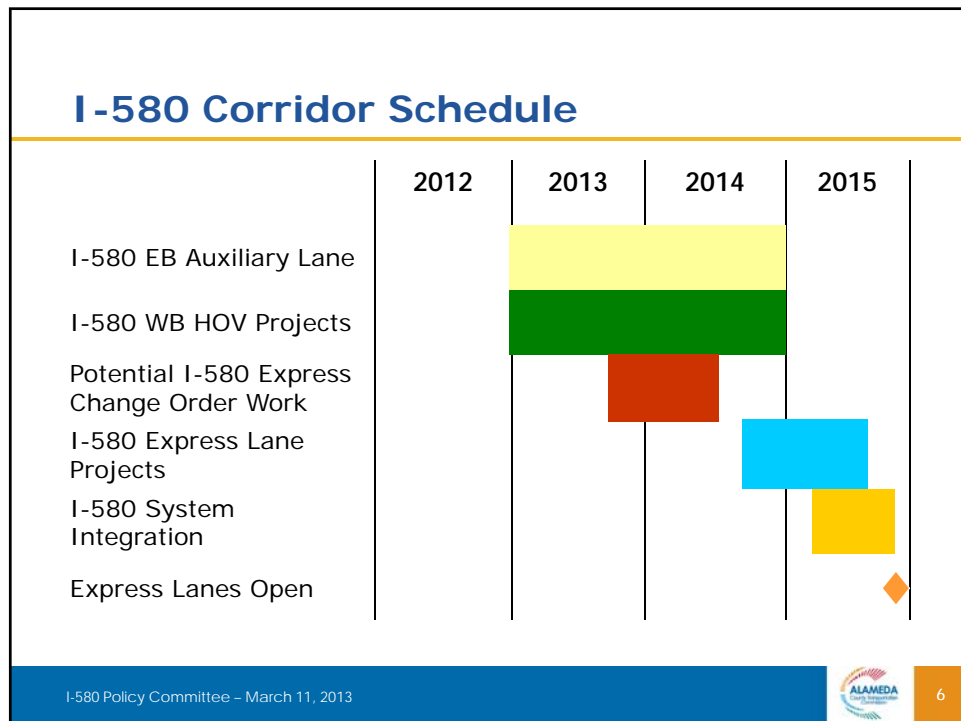
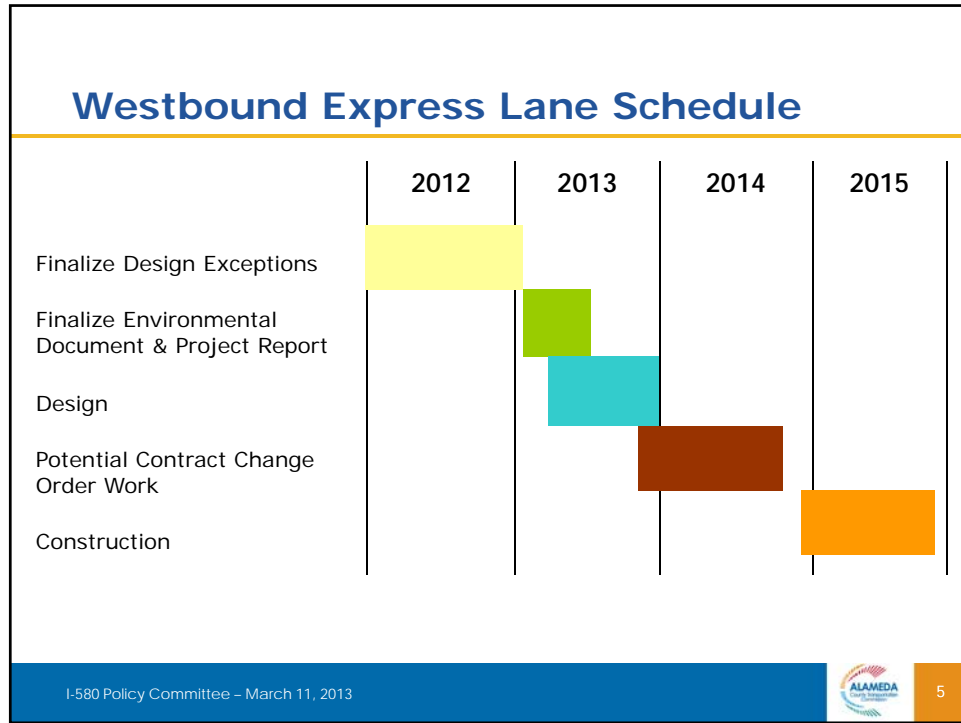
A Presentation for the
I-580 Express Lane Policy Committee
March 11, 2013



ALA580 Express (HOT) Lane Projects

- **Eastbound Express Lanes** –
Signs, Electrical Conduit, Striping
- **Westbound Express Lane** –
Signs, Electrical Conduit, Striping
- **System Integrator** –
Design of Software and Hardware, Install and
Test Equipment, and Implement Toll Operations





Ongoing Activities

- Updating Traffic studies for Near Continuous Access
- Environmental Studies are Underway (Westbound)
- Finalizing Design Exceptions and Project Report (Eastbound)
- Updating Environmental Document (IS/EA) for Near Continuous Access (Eastbound)

I-580 Policy Committee – March 11, 2013



7

Delivery Strategy

- Implement Near Continuous Access Configuration
- Combine EB & WB Express Lane Projects (Design & Construction Phase for Civil and System Integration Contracts)
- Implement Change Order Opportunities on Existing Contracts

I-580 Policy Committee – March 11, 2013



8

System Integration – What is it?

- A Specialized Field
- Utilizes Technology to Manage Traffic Congestion
- Designs, Develops and Deploys Electronic Toll System
- Last Component of Express Lane Implementation

I-580 Policy Committee – March 11, 2013



9

System Integration - Components

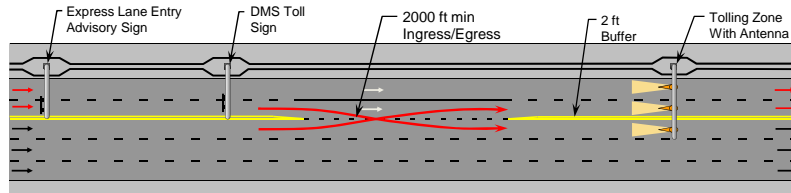
- Design of Software & Hardware
- Factory Acceptance Test
- Equipment Procurement, Installation; & Integration
- Field Tests Equipment & Subsystems
- Toll Operations (Open to Traffic)
- Site Acceptance Test & Final System Acceptance
- Warranty Period

I-580 Policy Committee – March 11, 2013

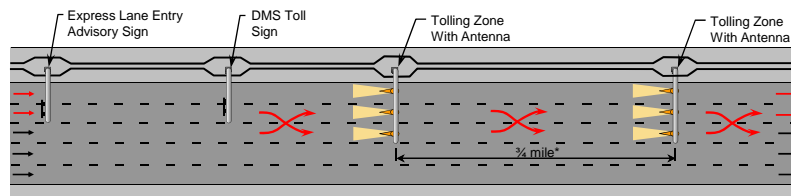


10

Limited Access vs. Continuous Access



Limited Access



Continuous Access (Similar to HOV Lane)

Legend and Notes:

- Express Lanes → (red arrow)
- General Purpose Lanes → (black arrow)
- * Preliminary, exact spacing to be determined

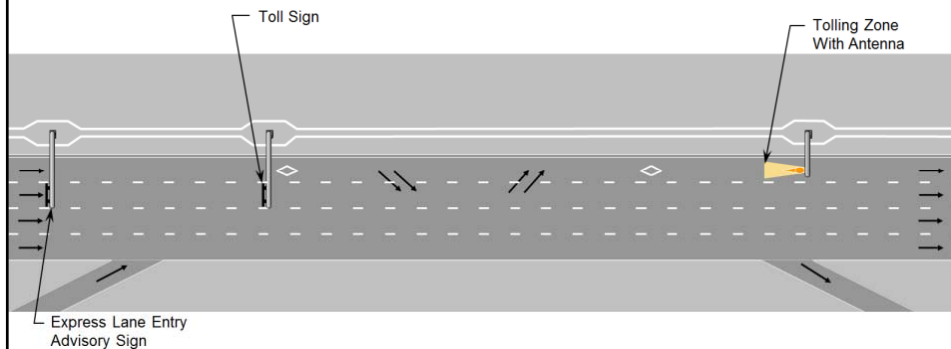
I-580 Policy Committee – March 11, 2013



11

Continuous Access

- Similar to an HOV Lane, but Tolloed
- Buffer Separation at Hot Spots



I-580 Policy Committee – March 11, 2013



12

Near Continuous Access

Minimizes Conflicts at Hot Spots

Similar to an HOV Lane,
with some Access
Restrictions via a Double-
White Buffer Stripe



I-580 Policy Committee – March 11, 2013



13

I-580 Access Locations



I-580 Policy Committee – March 11, 2013



14

Continuous Access Implementation

Key Elements Under Development

- Traffic & Revenue Study
- Concept of Operations/System Eng. Mgmt. Plan
- Software and Hardware Design
- Pricing Strategy - Zone Tolling
- Toll Sign/Reader Locations
- Automated Violation Enforcement

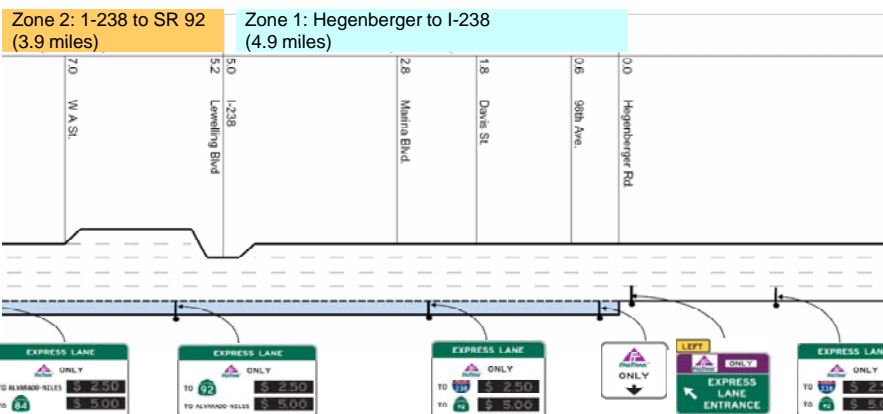
I-580 Policy Committee – March 11, 2013



15

Zone Tolling

Conceptual Plan for Implementation on I-880, Courtesy MTC

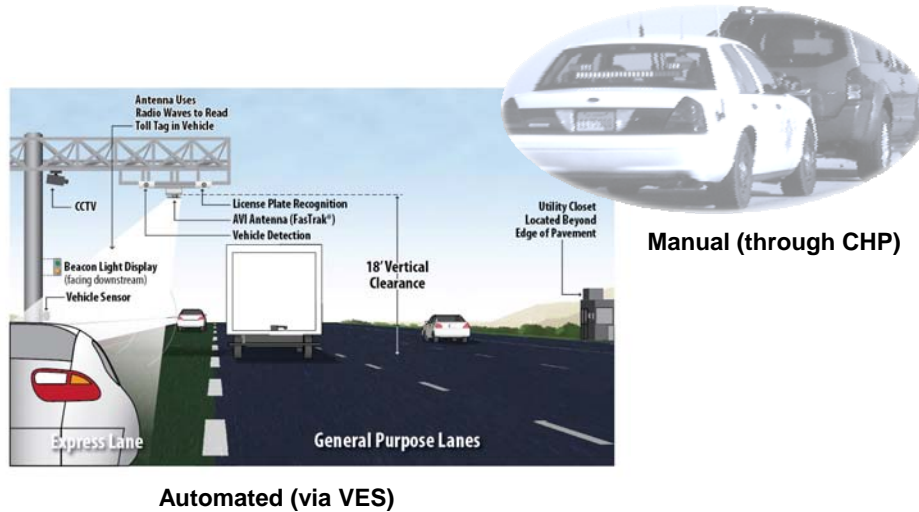


I-580 Policy Committee – March 11, 2013



16

Enforcement



I-580 Policy Committee – March 11, 2013



17

Continuous Access Implementation

Automated Violation Enforcement

Will Require ...

- License Plate Read
 - Switchable Toll
- Transponder for HOV



I-580 Policy Committee – March 11, 2013



18

Project Implementation – Work Plan

Will Include Strategy & Timeline for ...

- Project Financial Plan – Breakeven Analysis
- Project Delivery Strategy & Approvals
- Toll Policy/Business Rules & Approval
- Public Education/Outreach

Questions / Answers