



**Project Delivery Monthly Progress Report**  
*ALA580 EXPRESS LANE CORRIDOR PROJECTS*

A Presentation for the  
I-580 Express Lane Policy Committee  
July 14, 2014



## Completed Activities

- Project Reports & Environmental Documents Approved for Eastbound and Westbound
- Civil Design Complete for Eastbound and Westbound as a one contract
- Completed Preliminary Design Document (PDD) for Electronic Toll System
- Issued Tier 2 and 3 CCOs to Contractors

## Ongoing Activities

- Working on Detailed Design Document (DDD) for Electronic Toll System
- Developing Public Outreach/Education Plan
- Developing/negotiating various Agreements

## Upcoming Activities

- Public Outreach Campaign, Fall 2014 - 2016
- Complete Detailed Design Document (DDD) for Electronic Toll System by August 2014
- Develop, Negotiate & Process Various Agreements
- Develop & Process CCOs with ETCC for Items Related to Vehicle Enforcement System

## Education and Outreach

### Purpose

To successfully launch the I-580 Express Lanes to ensure the safe and efficient use of the facility and the early and easy adoption of the lanes, and to support understanding of the lanes as part of the larger Bay Area Express Lanes network.

### Key Audiences

- I-580 corridor commuters
- Current FasTrak customers
- Residents of cities along the corridor and farther to the east (Tracy, Manteca, Stockton)
- Major employers along the corridor
- Local business that utilize the corridor to transport goods and services

I-580 Policy Committee – July 2014



## Overall Outreach Efforts

### Finalize and Implement Public Outreach and Education Plan

- Examination of perceptions and concerns, and recommendations of solutions to support success of the lanes;
- Development of messaging strategy and materials, including coordination with regional partners
- Performing robust pre-launch, launch and post-opening outreach to commuters, business and media
- Providing post-opening education and outreach report

I-580 Policy Committee – July 2014



## Current Outreach & Education Activities

### Understanding our Audience

- Perform focus groups and follow-up survey
  - *Four 10-person focus groups and one 350-person phone survey*
- Research origin and destination data to further refine audience

### Messaging

- Develop messaging to ensure easy understanding and access, and knowledge that this is just one of many congestion management/TDM strategies along this corridor
- Coordination with regional partners on Bay Area Express Lanes Identity
  - *Bay Area Express Lanes web portal to launch September 30, 2014 (MTC)*

I-580 Policy Committee – July 2014



## Upcoming Presentations to I-580 PC

- **September 2014:** Results of Focus Groups and Survey and how this information will inform plans and action
- **January 2015:** Education and outreach implementation and regional coordination
- **Spring 2015:** Transponder user education and marketing
- **Summer 2015:** Outreach and education for Express Lanes Launch
- **Fall 2015:** Update on launch activities

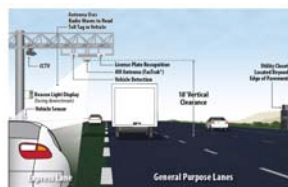
I-580 Policy Committee – July 2014



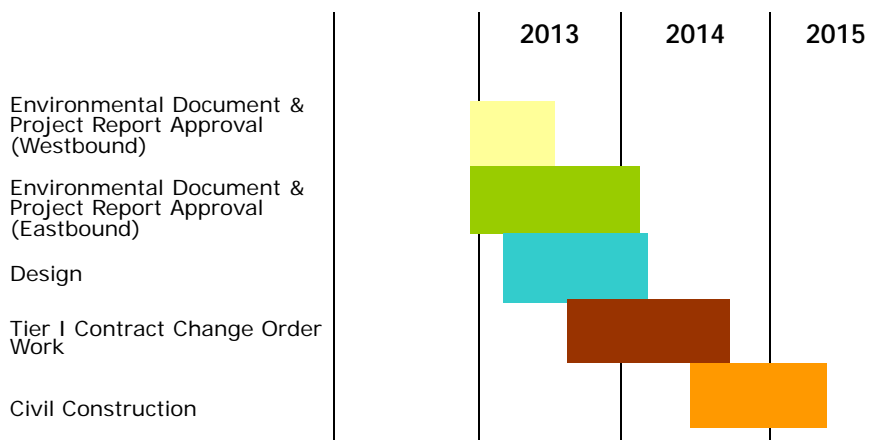
## Continuous Access Implementation

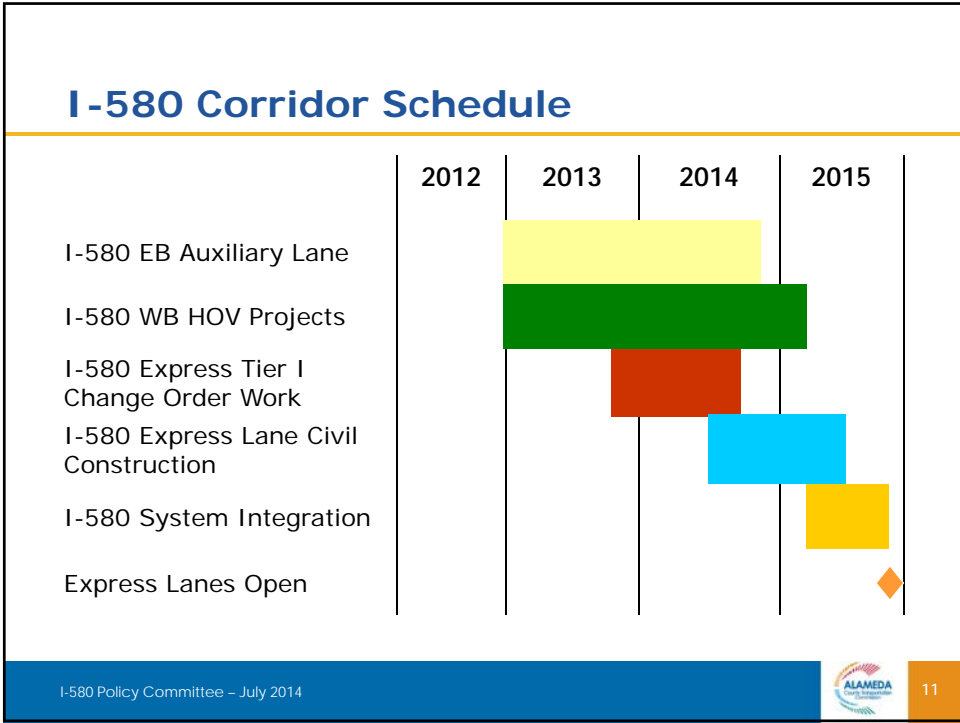
### Key Elements Under Development

- Electronic Toll System Design
  - Automated Violation Enforcement
  - Business Rules
- Toll Ordinance
- Legislation
- Agency Agreements
- Public Outreach/Education Plan Implementation




## Express Lane Schedule





### I-580 Express Lane Funding

Project Phase	Funding Source (\$ x million)						Total
	ARRA	Federal Earmark	RM2	TVTC	TCRP Deferred	Local (Meas. B)	
PA&ED			1.39	2.17	0.10		3.66
PS&E	0.70		0.11	0.93	3.10		4.84
Sys. Int.	6.80			0.68	1.47	8.05	17.00
ROW				0.37			0.37
Const. Support			2.55		0.05	1.47	4.07
Construct Cap		1.00		0.63	1.28	21.65	24.56
O&M						0.48	0.48
<b>TOTAL</b>	<b>7.50</b>	<b>1.00</b>	<b>4.05</b>	<b>4.78</b>	<b>6.0</b>	<b>31.65</b>	<b>54.98</b>
<b>Total Project Cost: \$54.98 M</b>							


12