



Project Delivery Monthly Progress Report
ALA580 EXPRESS LANE CORRIDOR PROJECTS

A Presentation for the
I-580 Express Lane Policy Committee
May 12, 2014



Completed Activities

- Project Reports & Environmental Documents Approved for Eastbound and Westbound
- Civil Design Complete for Eastbound and Westbound as a one contract
- Issued Tier 2 and 3 CCOs to Contractors

Ongoing Activities

- Working on Electronic Toll System Design
- Developing Public Outreach/Education Plan
- Preparing various Agreements



Upcoming Activities

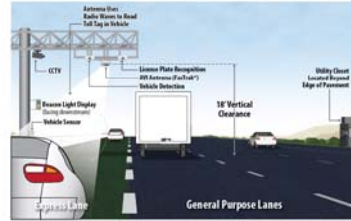
- Begin Public Outreach Campaign in April/May 2014
- Continue with Electronic Toll System Design
- Develop, Negotiate & Process Various Agreements
- Process Contract Amendments with URS for Additional Design Services and Design Support During Construction
- Develop & Process CCOs with ETCC for Items Related to Vehicle Enforcement System



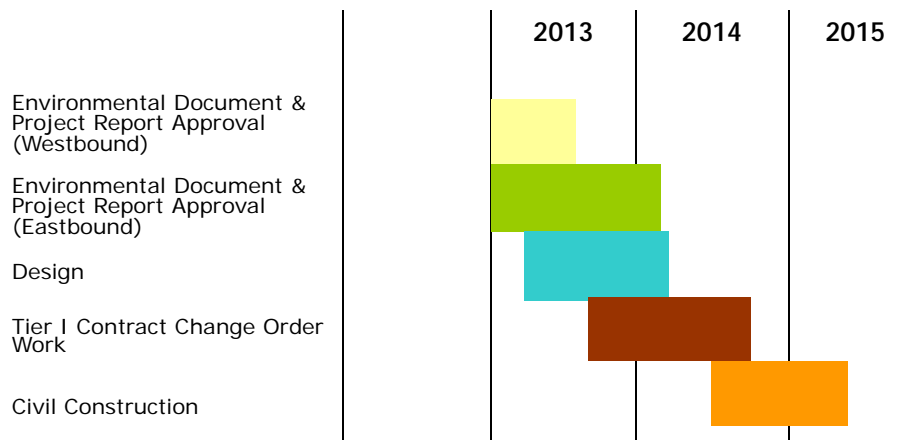
Continuous Access Implementation

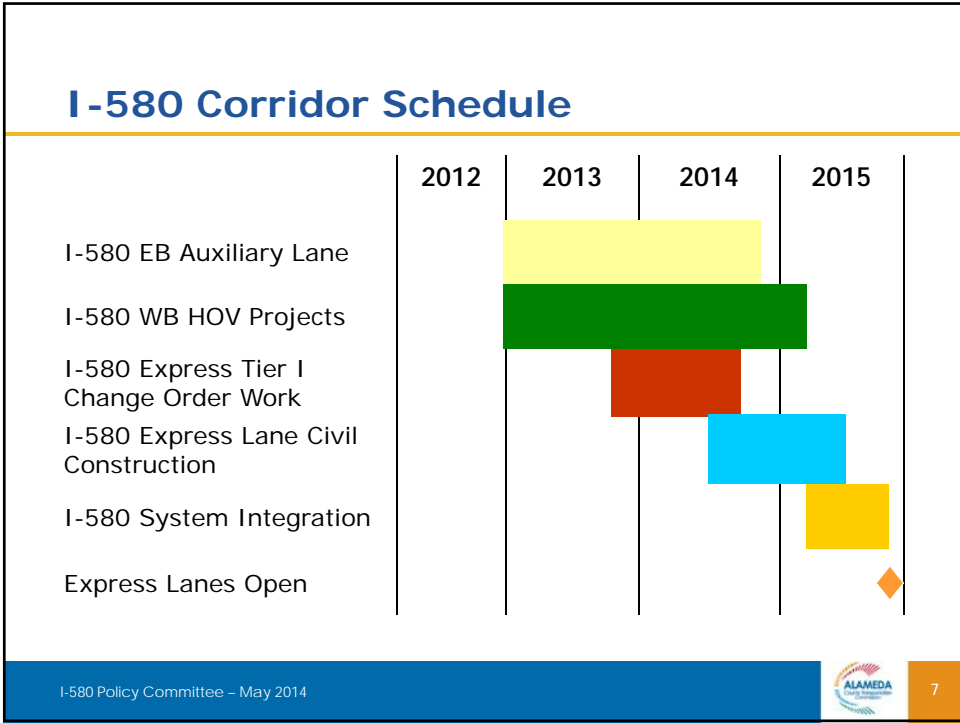
Key Elements Under Development

- Electronic Toll System Design
 - Automated Violation Enforcement
 - Business Rules
- Toll Ordinance
- Legislation
- Agency Agreements
- Public Outreach/Education Plan Im



Express Lane Schedule





I-580 Express Lane Funding

Project Phase	Funding Source (\$ x million)							
	ARRA	Federal Earmark	RM2	TVTC	TCRP Deferred	Local (Meas. B)	Other Local	Total
PA&ED			1.39	2.17	0.10			3.66
PS&E	0.70		0.11	0.93	3.10			4.84
Sys. Int.	6.80			0.68	1.47		8.05	17.00
ROW				0.37				0.37
Const. Support			2.55		0.05	1.47		4.07
Construct Cap		1.00		0.63	1.28		21.65	24.56
O&M						0.18	0.30	0.48
TOTAL	7.50	1.00	4.05	4.78	6.0	1.65	30.00	54.98
Total Project Cost: \$54.98 M								

ALAMEDA County Department of Transportation 8