

I-580 Express Lanes Monthly Operations Update



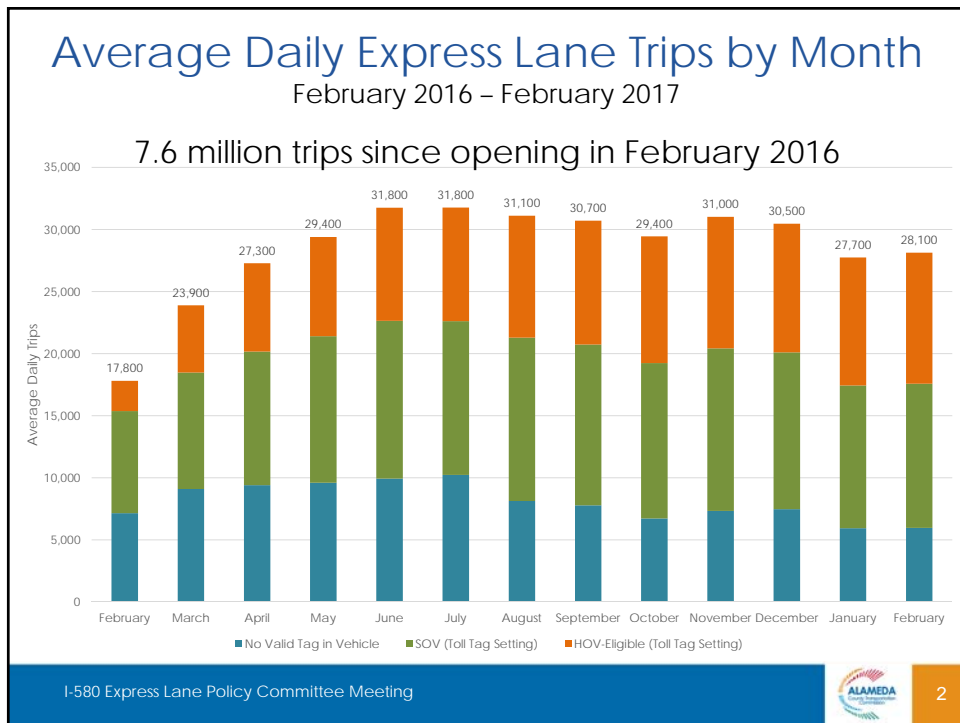
TOLL-PAYING
VEHICLES


◇

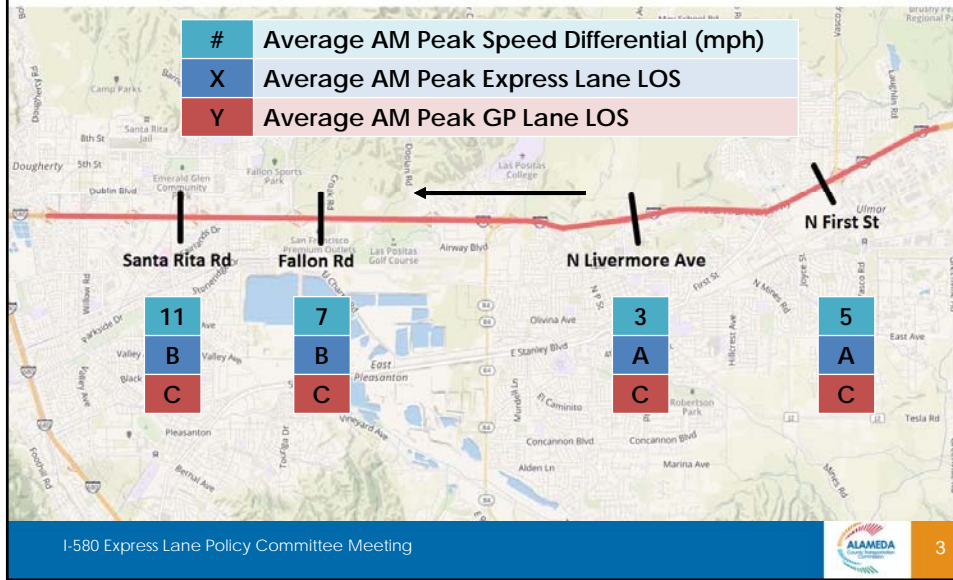
TRANSIT

A Presentation for the
I-580 Express Lane Policy Committee
April 10, 2017

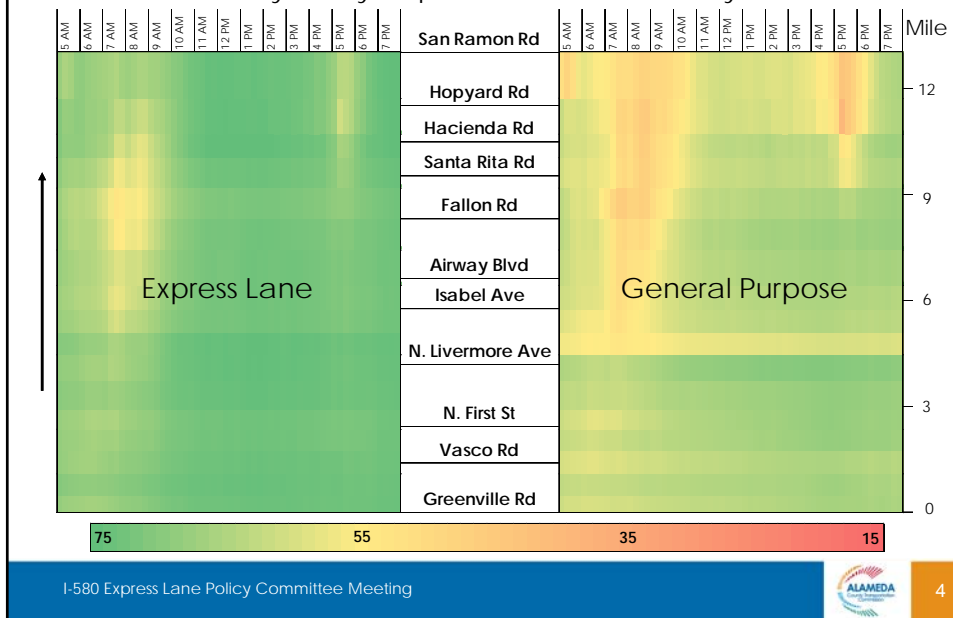




Speed/Density Data Locations Westbound (5 am - 11 am), February 2017

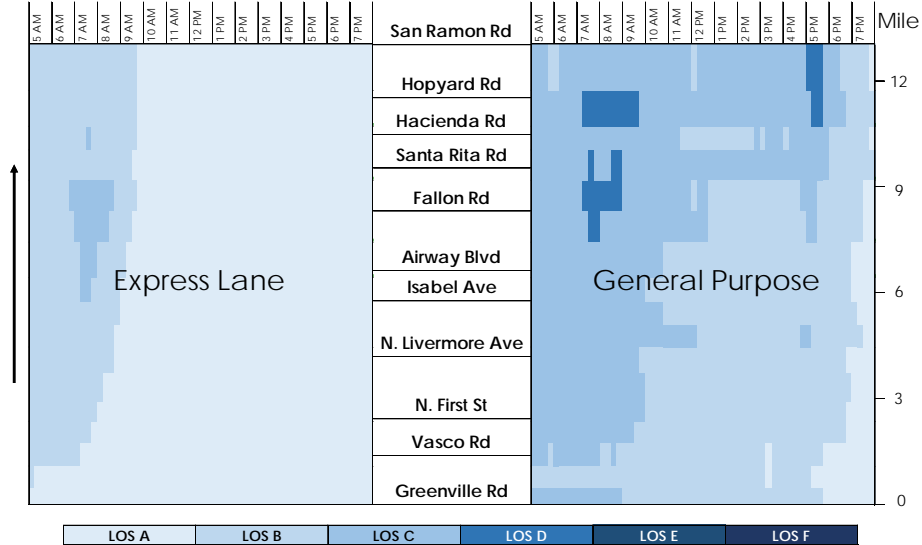


Westbound I-580 Corridor Speed Heat Maps Monday-Friday, September 2016 – February 2017



Westbound I-580 Corridor Density Heat Maps

Monday-Friday, September 2016 – February 2017



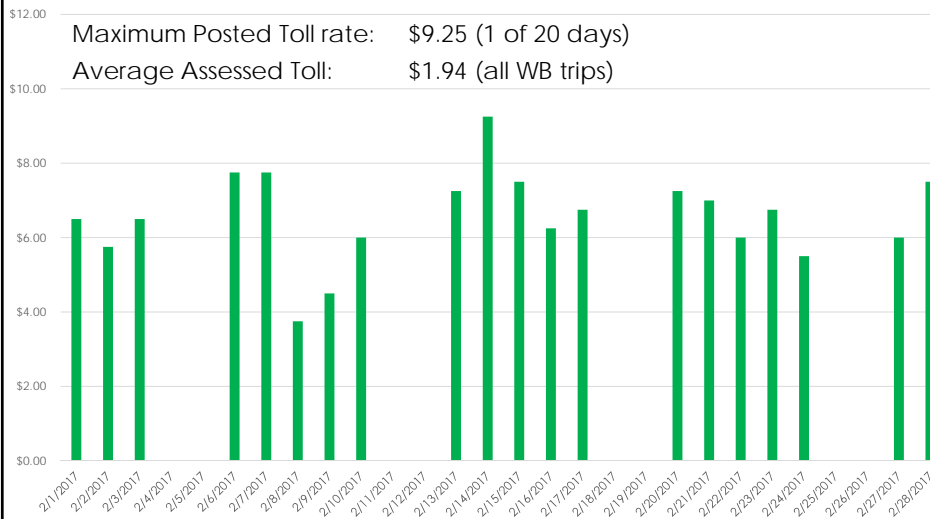
I-580 Express Lane Policy Committee Meeting



5

I-580 EL: Average Daily Toll Rate

Westbound: Greenville Road to San Ramon Road (Full Corridor)

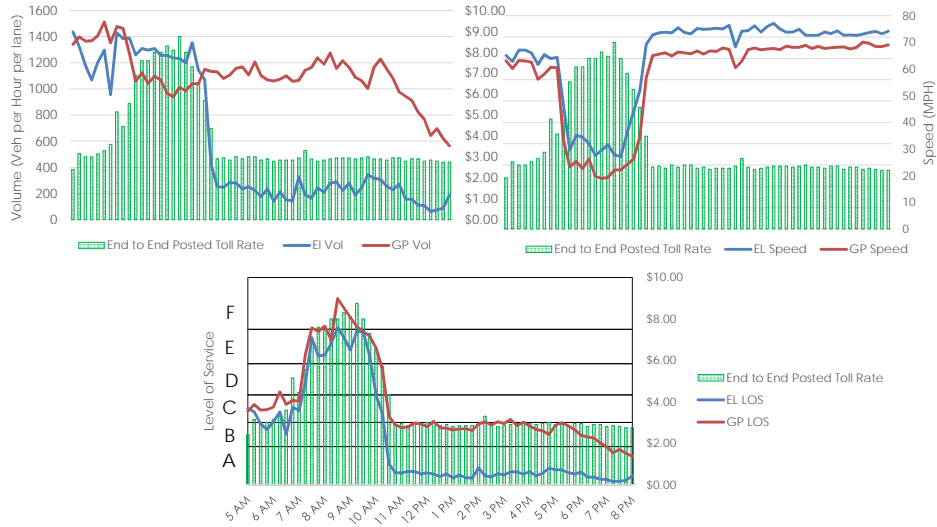


I-580 Express Lane Policy Committee Meeting

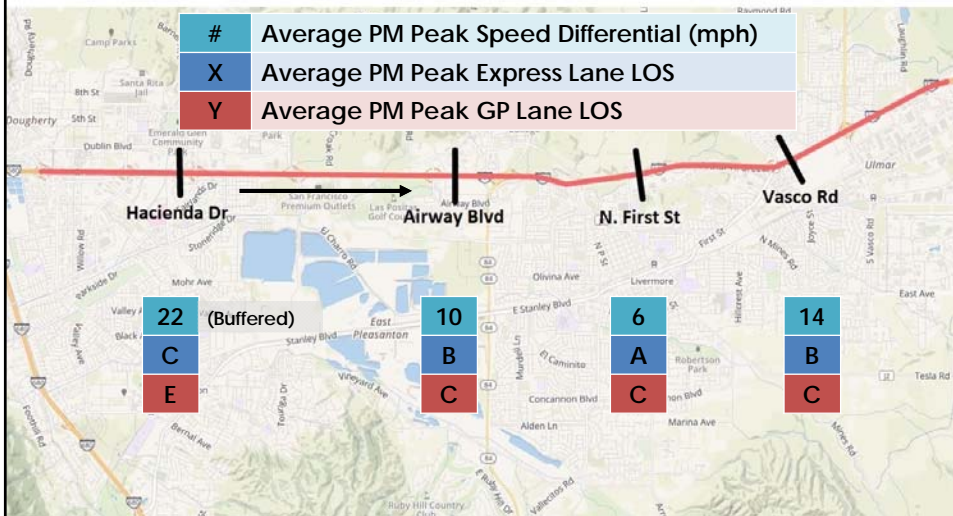


6

I-580 WB: Toll Rate vs Traffic Near Fallon Road (2/14/2017)

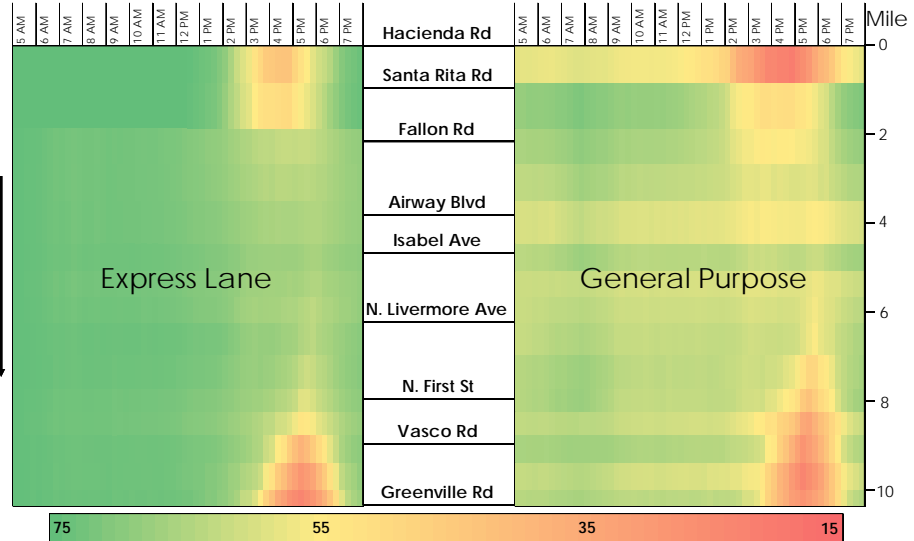


Speed/Density Data Locations Eastbound (2 pm - 7 pm), February 2017



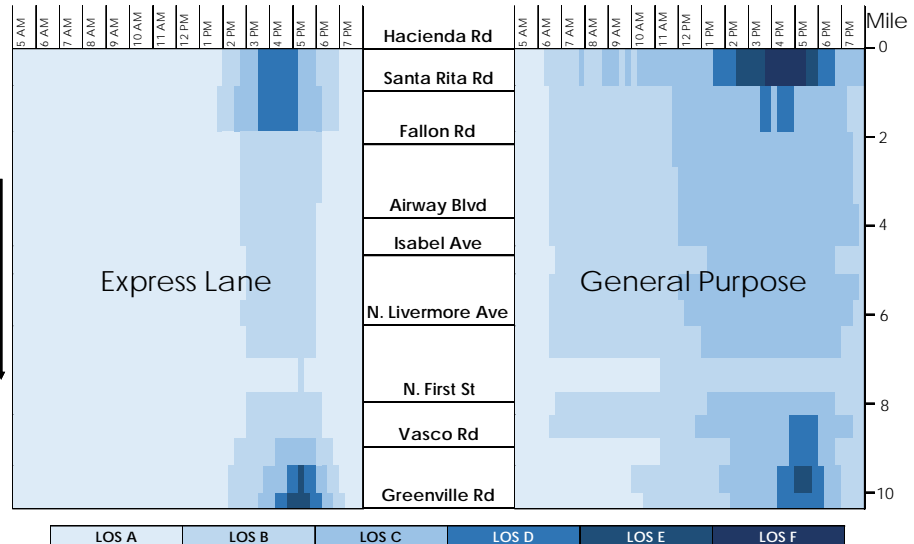
Eastbound I-580 Corridor Speed Heat Maps

Monday-Friday, September 2016 – February 2017



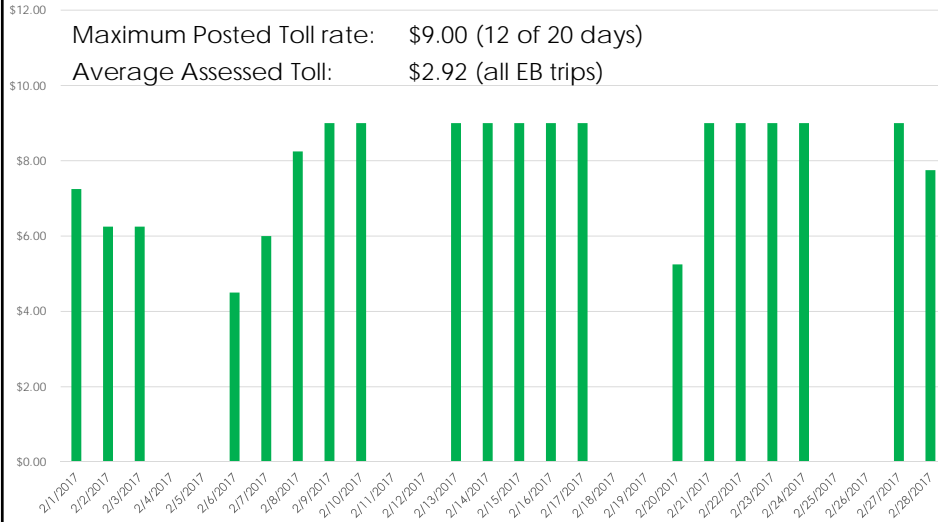
Eastbound I-580 Corridor Density Heat Maps

Monday-Friday, September 2016 – February 2017



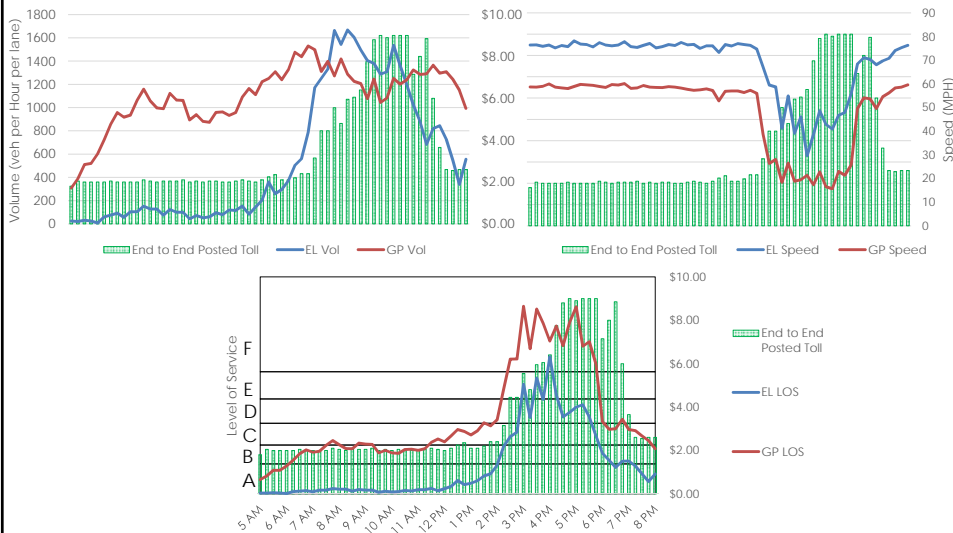
I-580 EL: Daily Maximum Toll Rate

Eastbound: Hacienda Dr to Greenville Rd (Full Corridor)



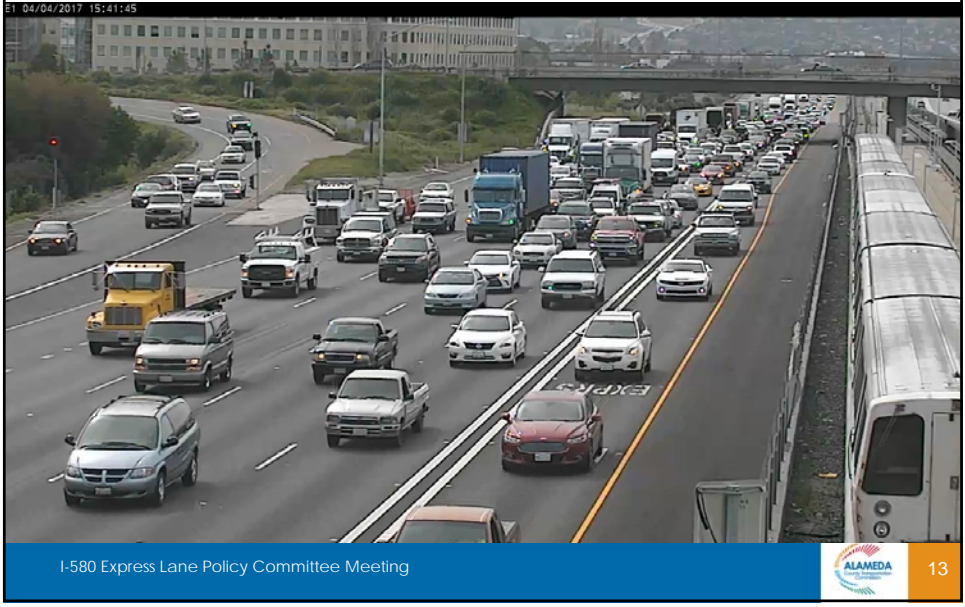
I-580 EB: Toll Rate vs Traffic

Near Hacienda Drive (2/14/2017)



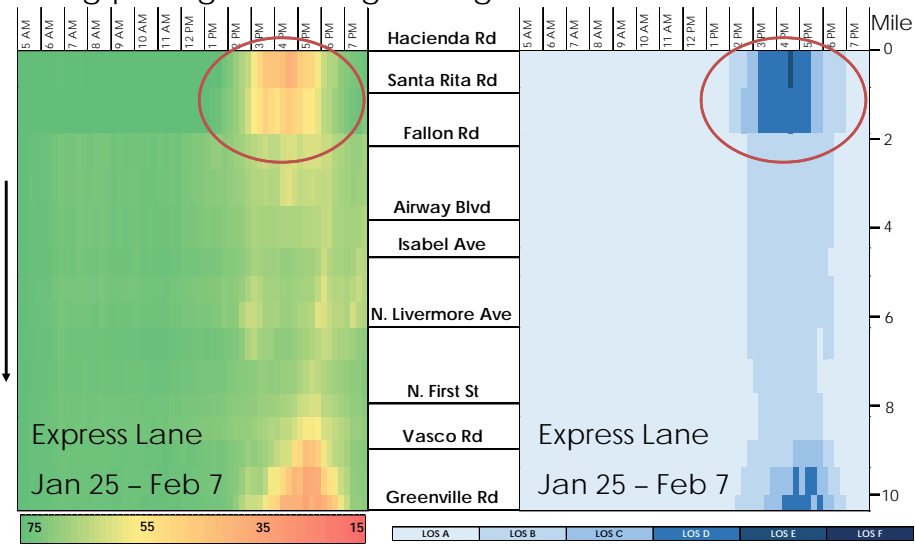
I-580 EL: Toll Rate Plan Adjustments

Using pricing to manage congestion at Hacienda Drive



I-580 EL: Toll Rate Plan Adjustments

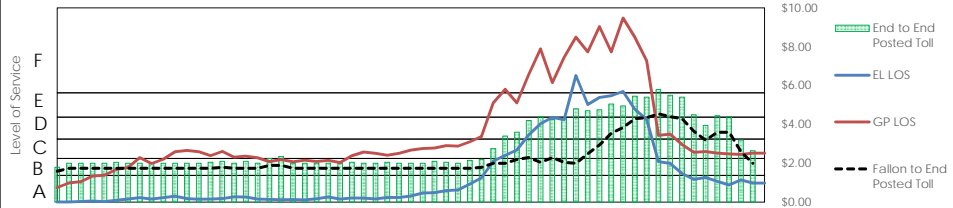
Using pricing to manage congestion at Hacienda Drive



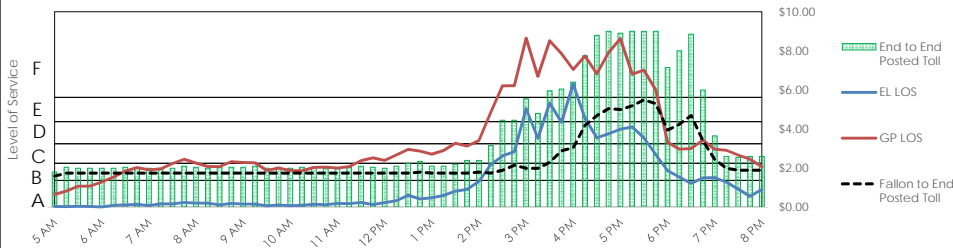
I-580 EL: Toll Rate Plan Adjustments

Using pricing to manage congestion at Hacienda Drive

LOS near Hacienda Drive (1/26/2017)

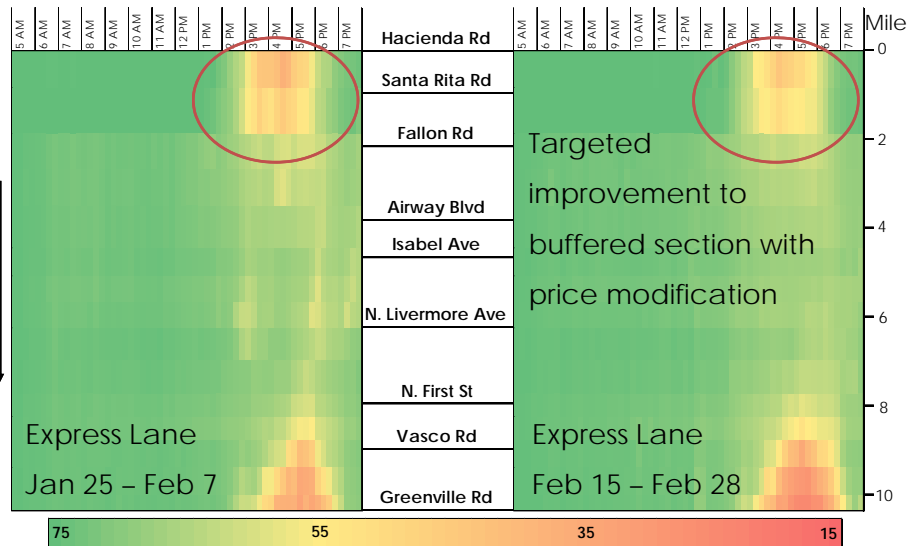


LOS near Hacienda Drive (2/14/2017)



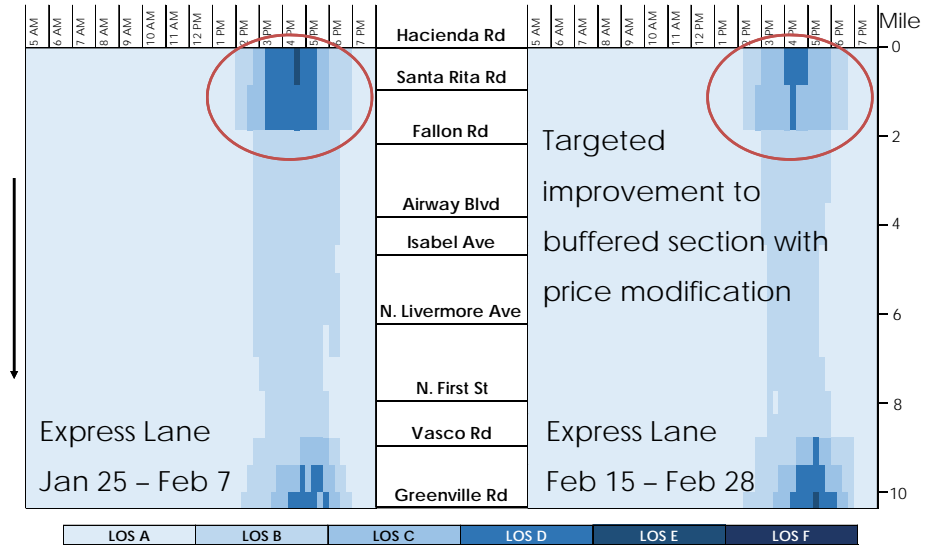
Eastbound I-580 Corridor Speed Heat Maps

Monday-Friday, Toll Rate Plan Modification on Feb 8



Eastbound I-580 Corridor Density Heat Maps

Monday-Friday, Toll Rate Plan Modification on Feb 8



I-580 Express Lane Policy Committee Meeting



17

I-580 Express Lanes: Financials

July 2016 – February 2017

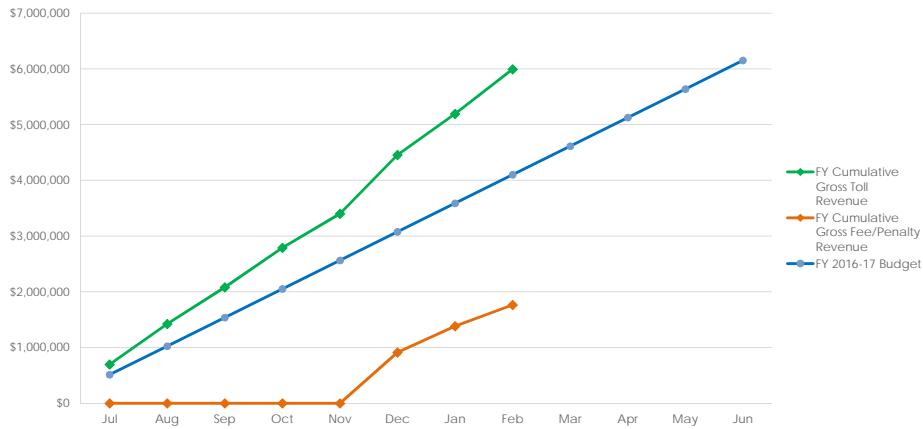
Gross Toll Revenues*

\$ 5.99 million

Forecast Operating Expenditures

\$ 4.10 million

*Gross toll revenues do not include revenues from violation fees/penalties.



I-580 Express Lane Policy Committee Meeting



18

Questions & Answers

