


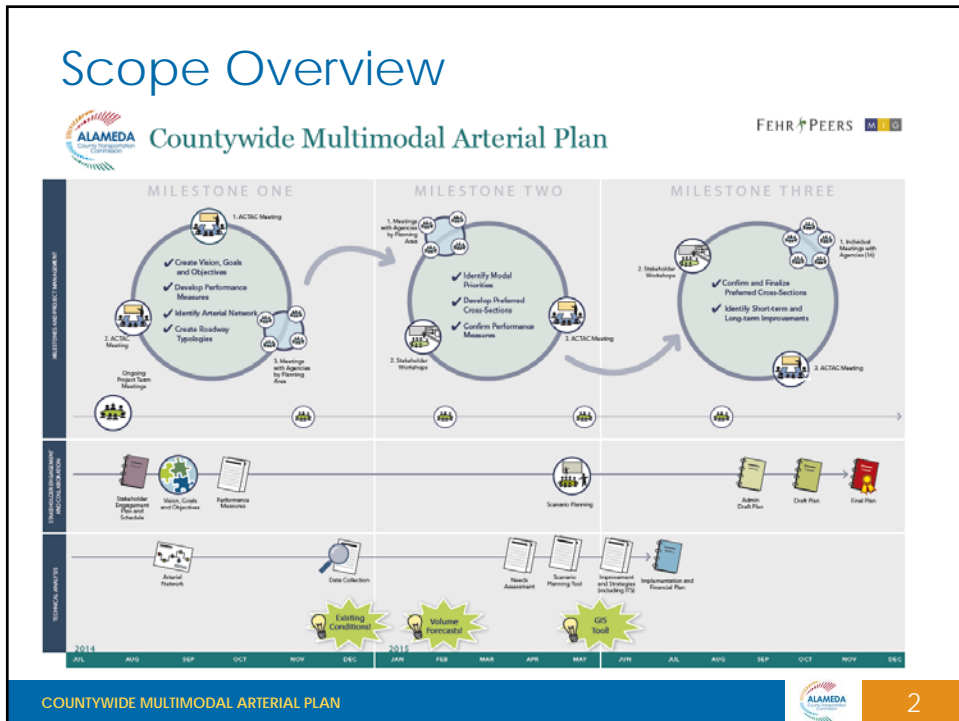
ALAMEDA COUNTY TRANSPORTATION COMMISSION

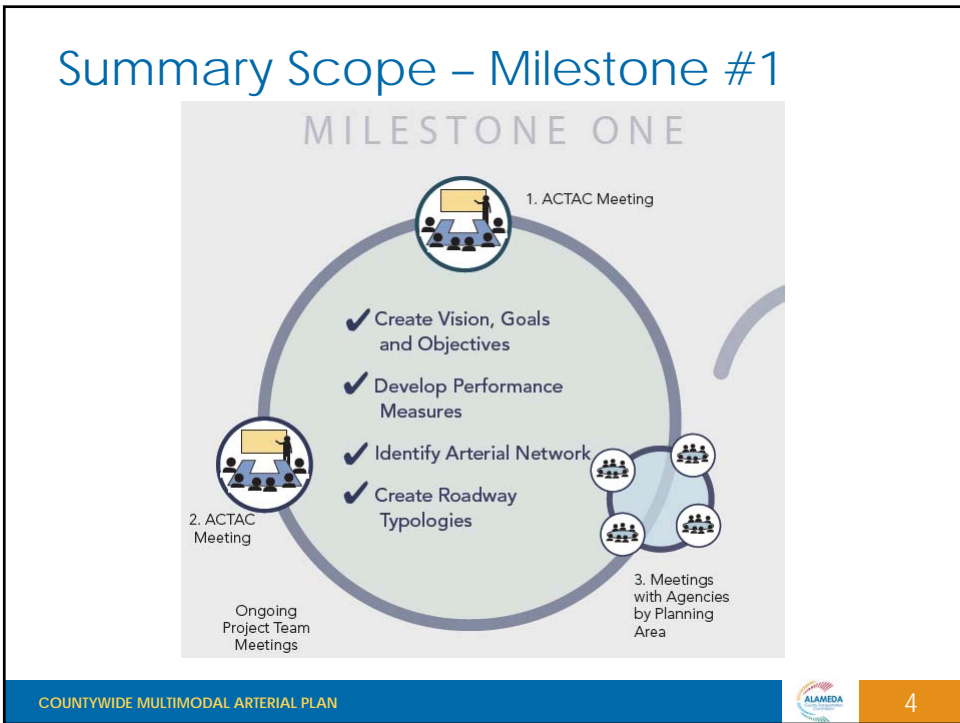
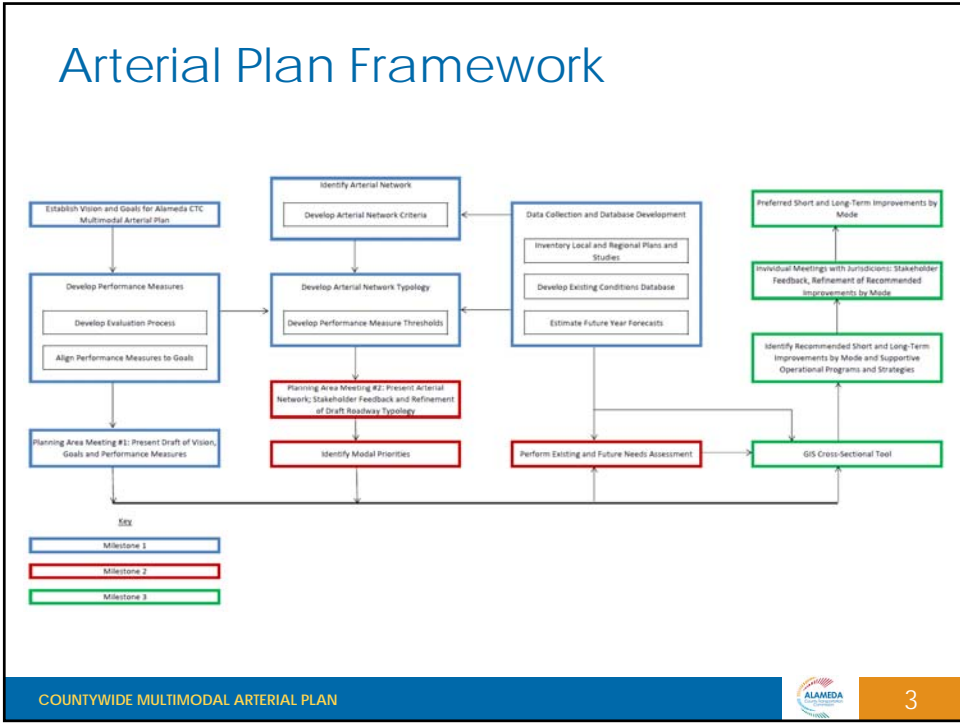
# Countywide Multimodal Arterial Plan

Improving multimodal mobility for better economic, health and environmental outcomes



ACTAC November 6<sup>th</sup> Meeting  
Francisco Martin, Fehr & Peers  
November 6, 2014





## Arterial Plan Vision Statement - Draft

*“Enhance the multimodal movement of people and goods to support a strong economy, healthy communities and clean environment with efficient, safe and accessible arterials.”*

## Arterial Plan Vision Statement – Preliminary Revised Draft

***“~~Enhance Alameda County will have a network of efficient, safe and equitable arterials that facilitate the multimodal movement of people and goods, and help create to support a strong economy, healthy communities and clean environment and vibrant communities, while maintaining local contexts with efficient, safe and accessible arterials.~~”***

## Arterial Plan Goals - Draft

The Arterial Network will be:

- Multimodal
- Accessible and Equitable
- Connected Across the County and Region
- Efficient Use of Resources
- Safe, Healthy and Clean

Two supporting principles:

- Support Strong Economy by Integrating Land Use Patterns and Local Decision-Making
- Adaptable and Resilient

## Arterial Plan Goals – Preliminary Revised Draft

The Arterial Network will be:

- Multimodal
- Accessible and Equitable
- Connected Across the County and Region
- Efficient Use of Resources
- Safe, Healthy and ~~Clean~~ Vibrant

Two supporting principles:

- Support Strong Economy ~~by Integrating Land Use Patterns and Local Decision-Making~~
- Adaptable and Resilient

## Performance Measures - Draft

| PERFORMANCE MEASURES FOR CONSIDERATION    |                                     |   |                           |
|---|-------------------------------------|---|---------------------------|
| Goal                                      | Category                            | Performance Measure                             | Measure Type              |
| 1. Multimodal                             | Auto                                | Congested Speed                                 | Facility-Specific Measure |
|   |                                     | Reliability                                     |                           |
|   | Transit                             | Transit Amenity Comfort Index                   |                           |
|   | Pedestrian Bicycle                  | Pedestrian Comfort Index                        |                           |
|   |                                     | Bicycle Comfort Index                           |                           |
|   | Trucks/Goods Movement               | Truck Route Comfort Index                       |                           |
| Enhanced Mobility                         | Non-Auto Transportation Mode Share  | Network Wide Measure                            |                           |
| 2. Accessible and Equitable               | Opportunity for TOD                 | Transit Accessibility                           | Facility-Specific Measure |
|   | Transit                             | Transit Connectivity                            |                           |
|   | Pedestrian Bicycle                  | Pedestrian Connectivity<br>Bicycle Connectivity |                           |
|   | Social Equity                       | Benefit to Communities of Concern               | Network Wide Measure      |
| 3. Connected Across the County and Region | Transit                             | Transit Connectivity                            | Network Wide Measure      |
|   | Pedestrian                          | Pedestrian Connectivity                         |                           |
|   | Bicycle                             | Bicycle Connectivity                            |                           |
|   | Auto/Trucks                         | Network Connectivity                            |                           |
| 4. Efficient Use of Resources             | Efficient Use of Capital Funding    | Capital Cost Effectiveness                      | Facility-Specific Measure |
|   | Efficient Use of Operations Funding | Operating Cost Effectiveness                    |                           |
|   | Implementation Feasibility          | Feasibility Score                               |                           |
|   | ITS Benefits                        | Coordinated Technology                          |                           |
|   | Economic Benefits                   | Impact on Employment/Housing                    |                           |
| 5. Safe, Healthy and Clean                | Safety                              | Collisions                                      | Facility-Specific Measure |
|   | VMT                                 | VMT Per Capita                                  | Network Wide Measure      |
|   | GHG                                 | GHG Per Capita                                  |                           |
|   | Active Transportation Mode Share    | Demand for Active Transportation                |                           |

## Summary Scope – Milestone #2



## Summary Scope – Milestone #3



## Next Steps

- Receive comments on draft Vision, Goals and Performance Measures by November 21, 2014.
- Approve Vision, Goals and Performance Measures – February 2015 Committees and Commission Meetings
- Draft Network Criteria - March 2015 ACTAC
- Draft Network and Draft Typology - April 2015 ACTAC
- Second set of Planning Area Meetings in April 2015
  - Discussion of draft arterial network, draft typology and modal priority
- Approve Arterial Network, Roadway Typology and Modal Priority– May 2015 ACTAC Meeting

Questions?