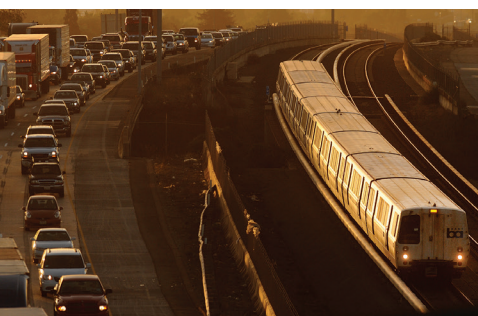




August 2015



# 13th Annual **CITIZENS WATCHDOG COMMITTEE** Report to the Public



## Measure B Sales Tax Activities

IN NOVEMBER 2000, ALAMEDA COUNTY VOTERS APPROVED MEASURE B, which extended the County's half-cent transportation sales tax to 2022 and set forth a 20-year Expenditure Plan. Measure B also established a Citizens Watchdog Committee (CWC) to represent the different perspectives of taxpayers throughout the County and to review all Measure B expenditures on projects, programs and administration for compliance with the Expenditure Plan.

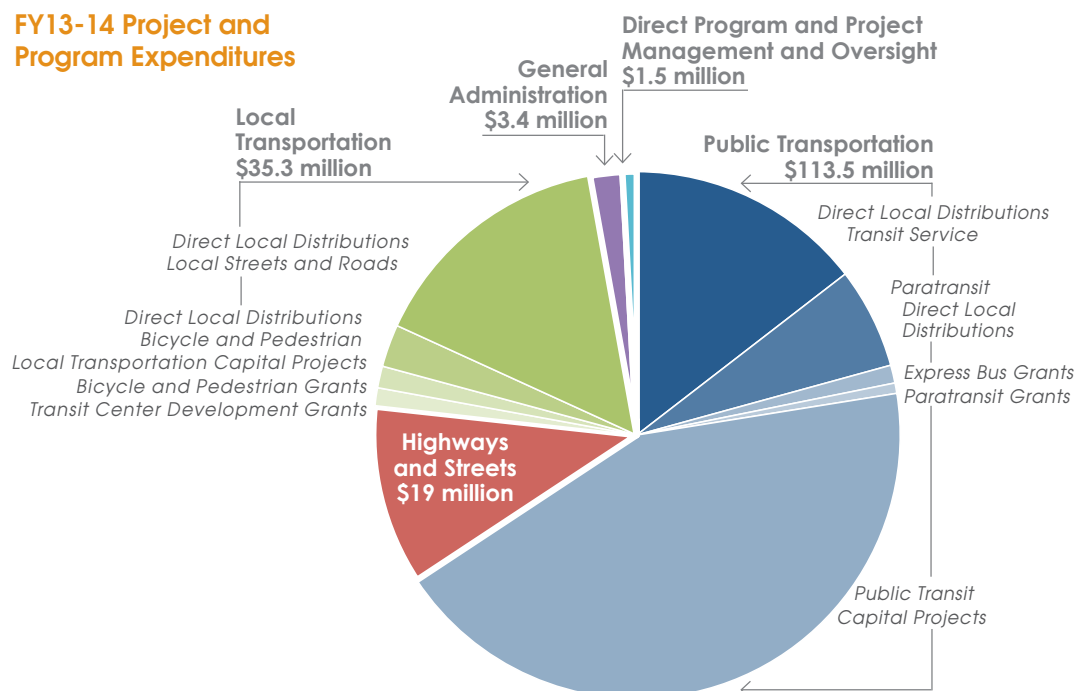
The CWC reports its findings annually to the public to ensure appropriate use of sales tax funds. During this reporting period, CWC members performed a number of activities. This 13th annual report covers expenditures during the fiscal year ended June 30, 2014 (FY2013-14) and CWC activities through June 2015. Alameda CTC received an unmodified or clean independent audit opinion for FY2013-14, and the CWC accepted the auditor's opinion.

## Summary of Expenditures

THE ALAMEDA COUNTY TRANSPORTATION COMMISSION (ALAMEDA CTC) IS RESPONSIBLE for administering the Measure B half-cent transportation sales tax measure.

In FY2013-14, Measure B revenues totaled \$127.1 million, and audited expenditures totaled \$172.7 million for different transportation modes, oversight and administration.

### FY13-14 Project and Program Expenditures



## INSIDE

- Financials At-a-Glance . . . . 2
- Citizens Watchdog Committee Activities. . . . . 3
- Alameda CTC Programs and Projects . . . . 5

# Financials At-a-Glance

## ALAMEDA CTC AUDITED

**EXPENDITURES INCLUDE** general administration, direct program and project management and oversight expenses, Measure B discretionary grant fund expenditures, project expenditures and payments to jurisdictions. This funds four main programs: local streets and roads, mass transit, paratransit and bicycle and pedestrian safety. In FY2013-14, audited Measure B expenditures on programs, projects and administration totaled \$172.7 million. Program compliance reports submitted by Measure B fund recipients reported \$63.9 million in expenditures, which includes expenditures of Measure B fund balances from previous years.

For Measure B-related projects and programs, Alameda CTC expended \$96.0 million on capital projects, \$66.8 million on direct local distributions, \$5 million on grants, \$3.4 million on general administration and \$1.5 million on direct program and project management and oversight.<sup>2</sup> The 2000 Measure B Expenditure Plan specifies the use of approximately 60 percent of Measure B revenues to fund programs and 40 percent to fund projects. The net revenues allocated approximately 60 percent to programs and approximately 40 percent to projects in the Expenditure Plan are used over the life of the Measure B program to ultimately achieve the split indicated in the Expenditure Plan.

## Alameda CTC FY2013-14 Audited Expenditures<sup>1</sup>

(\$ in millions rounded)<sup>2</sup>

Public Transportation	\$113.5
Direct Local Distributions - Transit Service	\$25.1
Direct Local Distributions - Paratransit	10.7
Paratransit Grants	1.1
Express Bus Service Grants	1.9
Public Transit Capital Projects	74.7
Highways and Streets Capital Projects	19
Local Transportation	35.3
Direct Local Distributions - Local Streets and Roads	26.5
Direct Local Distributions - Bicycle and Pedestrian	4.5
Bicycle and Pedestrian Grants	1.9
Transit Oriented Development Grants	0.1
Local Transportation Capital Projects	2.3
General Administration	3.4
Direct Program and Project Management and Oversight	1.5
<b>Total:</b>	<b>\$172.7</b>

Notes:

<sup>1</sup> In accordance with the 2000 Measure B Expenditure Plan, Alameda CTC allocates funds for specific capital projects and grants (paid on a reimbursement basis), and distributes sales tax revenue on a monthly, formulaic basis to the cities, the County and transit operators.

<sup>2</sup> Expenditure amounts may vary by category due to rounding.

## FY2013-14 Measure B Direct Local Distribution Totals for All Programs<sup>1</sup>

Agency/Jurisdiction	Beginning Balance <sup>2</sup>	Distributions	Expended	Ending Balance
ACE	\$2,478,936	\$2,508,854	\$2,824,169	\$2,168,442
ACPWA	\$749,251	\$2,940,831	\$1,443,996	\$2,256,162
AC Transit	\$0	\$25,360,728	\$22,296,461	\$3,064,267
BART	\$0	\$1,763,298	\$1,763,298	\$0
City of Alameda	\$3,008,030	\$2,017,093	\$2,298,204	\$2,755,714
City of Albany	\$428,577	\$467,919	\$768,464	\$129,178
City of Berkeley	\$1,548,672	\$3,342,735	\$2,330,062	\$2,562,623
City of Dublin	\$904,164	\$520,539	\$559,739	\$869,099
City of Emeryville	\$153,022	\$301,474	\$39,170	\$416,800
City of Fremont	\$4,194,004	\$3,561,826	\$4,490,636	\$3,284,761
City of Hayward	\$2,170,957	\$3,292,248	\$3,431,698	\$2,040,253
City of Livermore	\$1,879,663	\$1,188,417	\$1,157,631	\$1,930,332
City of Newark	\$244,705	\$717,001	\$487,502	\$475,201
City of Oakland	\$12,016,585	\$11,930,940	\$12,539,565	\$11,447,976
City of Piedmont	\$555,948	\$425,931	\$589,535	\$393,761
City of Pleasanton	\$2,289,901	\$1,031,710	\$1,666,789	\$1,686,098
City of San Leandro	\$3,472,226	\$1,835,523	\$1,899,673	\$3,420,388
City of Union City	\$1,201,273	\$1,562,322	\$1,633,452	\$1,142,339
LAVTA	\$0	\$969,687	\$969,687	\$0
WETA	\$3,183,231	\$923,069	\$661,891	\$3,446,424
<b>Total<sup>3</sup></b>	<b>\$40,479,144</b>	<b>\$66,662,145</b>	<b>\$63,851,622</b>	<b>\$43,489,819</b>

Notes:

<sup>1</sup> The reported expenditures may include Measure B grant funds, fund balances and reserves from prior years, resulting in higher reported expenditures than receipts.

<sup>2</sup> The Beginning Balance may vary from the prior year due to fund balance restatements in FY2013-14 to include only Measure B direct local distribution funds.

<sup>3</sup> Revenue and expenditure amounts may vary due to rounding.

# Citizens Watchdog Committee Activities

## THE CITIZENS WATCHDOG

**COMMITTEE (CWC)** has undertaken the following activities from July 1, 2013, through June 30, 2015.

- **Ongoing Programs and Capital Projects Watch:** The CWC continued to watch specific programs and capital projects and to monitor any issues of concern.
- **Ongoing Budget Update:** The CWC received and reviewed the annual budget and mid-year budget updates.
- **Audit and Compliance Report Review (January 2014, January 2015):** The CWC performed its review of Measure B direct distribution recipients' audited financial statements and compliance reports, and requested additional information to help clarify agency expenditures. The CWC monitored compliance with detailed funding plans and implementation schedules required by compliance policies in the Master Programs Funding Agreements including timely use of funds. All CWC concerns were satisfactorily addressed.
- **Compliance Report Ad Hoc Subcommittee (October 2014):** The CWC met to review the new compliance report forms that include funding tables to facilitate CWC review. The CWC requested ongoing participation in the development of the review process.
- **Independent Audits:** In November 2013 and November 2014, the CWC received presentations from

independent auditors on the audited Comprehensive Annual Financial Reports for the year ended June 30, 2013, and for the year ended June 30, 2014, respectively on Measure B revenues and expenditures. The independent auditors did not identify any concerns. The auditors also reviewed Alameda CTC's issuance of \$137.1 million of Sales Tax Revenue Bonds, which were issued in March 2014, and the compliance requirements involved with this issuance.

- **Audit Review Process:** In March 2014, the CWC created an audit subcommittee to provide input to the independent auditor on items of interest to the CWC. The independent auditors met with the audit subcommittee before the FY2013-14 financial audit, which resulted in additional testing performed by the auditors on compliance report evaluations and the timely use of funds policy for local agencies. The auditors reported back to the CWC to address the results of the additional testing. The auditors did not identify any material concerns. The cities of Alameda, Dublin and Emeryville did not meet the timely use of funds policy. These agencies requested approval of extensions in June 2015.
- **Annual Report to the Public (2014):** In January 2014, the CWC

established a subcommittee to discuss outreach objectives for the annual report. In March 2014, CWC members established a subcommittee to develop its annual report to the public. The CWC Annual Report Subcommittee met in April and May of 2014 and recommended adding new outreach activities in 2014, which included exploring cost-effective strategies to expand the outreach. At the July meeting, the CWC held a public hearing to receive comments on the report.

Public outreach for the 12th Annual Report included a press release, online ads that link to the web-based report, print advertisements in Bay Area publications, additional advertisements on-board Alameda-Contra Costa Transit District (AC Transit) buses, reference to the report in the Alameda CTC e-newsletter and e-mail and print mailings.

Additional outreach included use of Alameda CTC's Twitter feed and Facebook page, distribution of the report at outreach events, translation of the advertisements and the report into Chinese and Spanish, and outreach to Asian and Hispanic community organizations.



In addition, many CWC members visited their City Councils and other venues to discuss, distribute and promote the report. Members contacted local jurisdictions that benefit from Measure B funding and encouraged them to post the report on their web pages.

• **Responses to CWC and Public Requests for Information:** The CWC received updates on:

- Alameda CTC's plan to issue limited tax bonds secured by a pledge of sales tax revenues to finance capital expenditures in the Expenditure Plan and Alameda CTC's adopted debt policy to establish guidelines for the issuance and management of debt and compliance with applicable post-issuance requirements of federal income tax law to preserve the tax-exempt status of the bonds.
- The general fund balance reserve policy that Alameda CTC adopted to mitigate risk, ensure sufficient liquidity in all funds and maintain credit worthiness.
- Alameda CTC's process for review of project invoices to ensure compliance with Master Project Funding Agreements and Project Specific Funding Agreements before authorizing payment.
- CWC Annual Report outreach efforts including outreach data as well as cost estimates for ad placements on AC Transit and BART, and other publicly visible locations.
- The 2014 Transportation Expenditure Plan including approvals of the plan from the Board of Supervisors and all City Councils.
- Alameda CTC's capital projects expenditures with emphasis on the Dumbarton Corridor Area Transportation Improvements, San Francisco Bay Area Rapid Transit District (BART) Oakland Airport Connector, which opened in fall 2014, BART to Warm Springs Extension and BART state of good repair.
- Use of Measure B funds in the development of Measure BB and the related 2014 Transportation Expenditure Plan.
- The Independent Watchdog Committee (IWC) required by Measure BB in the 2014 Transportation Expenditure Plan has the same composition as the CWC required by Measure B. The IWC will report directly to the public and is charged with reviewing all Measure B and Measure BB expenditures and Measure BB performance measures. The IWC will meet for the first time in July 2015.
- The Measure B grant programs' funding and funding allocation process.
- The local streets and roads funding formula, its derivation and application in Measure B and Measure BB.
- The goals reached for the Alameda CTC Local Business

Contract Equity Program. In FY2013-14, Alameda CTC exceeded its 70 percent Local Business Enterprises (LBEs) and its 30 percent Small Local Business Enterprise goals for professional and administrative services. Total payments to LBEs equaled an estimated \$3.8 million (79 percent) for active contracts.



**New Name: Independent Watchdog Committee**

The Citizens Watchdog Committee (CWC) required by Measure B is undergoing a name change to the Independent Watchdog Committee (IWC). The 2014 Transportation Expenditure Plan funded by Measure BB, which voters approved in November 2014, required development of the IWC.

The Independent Watchdog Committee, a continuation of the CWC by the Commission, reports directly to the public and provides oversight by reviewing all Measure B expenditures and Measure BB expenditures and performance measures of the agency. IWC members are Alameda County residents who are not elected officials at any level of government, nor individuals in a position to benefit personally in any way from the sales tax.

Watch for the new name on the Alameda CTC website and in future IWC annual reports.

# Alameda CTC Programs

**ALAMEDA CTC ALLOCATES APPROXIMATELY 60 PERCENT OF MEASURE B FUNDS**, net of administrative funding, on a monthly, formula basis (direct local distributions) and through competitive grants paid on a reimbursement basis to Alameda County, cities and transit agencies. In FY2013-14, Alameda CTC expended \$71.8 million in Measure B funds on programs.<sup>1</sup>

## Local streets and roads:

All cities and the county receive allocations for local transportation improvements, including street maintenance and repair. Jurisdictions use these flexible Measure B funds to meet their locally determined transportation priorities.

- Payments to jurisdictions: \$26.5 million
- Grants: \$0
- **Total: \$26.5 million**

## Mass transit:

Transit operators for systems including Altamont Commuter Express, AC Transit, Union City Transit, San Francisco Bay Area Water Emergency Transportation Authority and Wheels receive allocations for operations.

- Payments to local transit operators: \$25.1 million
- Grants: \$1.1 million for Countywide Express Bus Service Grants
- **Total: \$26.2 million**

## Special transportation for seniors and people with disabilities (paratransit):

Cities and transit operators receive funds to support their ongoing transportation programs for seniors and people with disabilities.

- Payments to local jurisdictions: \$10.7 million
- Grants: \$1.9 million for Paratransit Gap Grants and stabilization funds
- **Total: \$12.6 million**

## Bicycle and pedestrian safety funds:

All cities and the County receive these funds for bicycle and pedestrian plans, programs and capital projects.

- Payments to local jurisdictions: \$4.5 million
- Grants: \$1.9 million for Countywide Discretionary Fund Grants
- **Total: \$6.4 million**

## Transit oriented development:

A small portion of Measure B revenues are awarded through the Transit Oriented Development Grant Program and leverage other funds by becoming a local match for grants and studies.

- Grants: \$0.1 million
- **Total: \$0.1 million**

### Notes:

<sup>1</sup> The 2000 Measure B Expenditure Plan includes the following program allocations: local streets and roads (22.34%), mass transit (21.92%), special transportation for seniors and people with disabilities (10.45%), bicycle and pedestrian safety (5%) and transit center development (0.19%). See the FY13-14 Program Compliance Report for data on expenditures by Measure B fund recipients ([http://www.alamedactc.org/files/managed/Document/14087/FY13-14\\_MB\\_Compliance\\_Summary\\_Report\\_FINAL\\_20140630.pdf](http://www.alamedactc.org/files/managed/Document/14087/FY13-14_MB_Compliance_Summary_Report_FINAL_20140630.pdf)).



Measure B funds infrastructure improvements on local roadways such as road repair, resurfacing, curb cuts and signal operations. For example, the City of Albany rehabilitated 2,800 square feet of pavement, repaired 485 potholes and restriped bicycle lanes and sharrows in FY2013-14.



Local paratransit programs provide convenient transportation options and community services to seniors and people with disabilities. AC Transit and BART provide Americans with Disabilities Act-mandated paratransit service via East Bay Paratransit shuttles.



The Bike-Go-Round Bicycle Education/Safety Program, funded by a Countywide Discretionary Fund Grant, began in July 2013 and increases travel safety and access for bicyclists. In a six-month period, the project sponsor Cycles of Change aimed to train 40 participants and provide bicycle repair services to 375 low-income bicycle commuters.

# Alameda CTC Projects



Completed in 2012, the Union City Intermodal Station phase I project provided better BART Station access from the west side, reconfigured parking facilities, improved bus facilities and enhanced pedestrian circulation. This growing transit-oriented community has family apartments, retail stores and a children's playground.



In 2015, construction began on phase I of the City of Hayward's Route 92/Clawiter-Whitesell Interchange and Reliever Route project, which includes travel and bicycle lanes in each direction, a landscaped median with a two-way left-turn lane and new curb, gutter, sidewalk, storm drain and lighting improvements.

Funded by Measure B, the City of Dublin's Iron Horse Transit Route will accommodate buses by widening Dougherty Road from four to six lanes; Class II bike lanes will accommodate bicyclists. Final design, right-of-way and utility relocation activities are underway.

**ALAMEDA CTC ALLOCATES APPROXIMATELY 40 PERCENT OF MEASURE B FUNDS** to capital projects, net of administrative funding. In FY2013-14, Alameda CTC expended \$96.0 million on capital projects for transportation infrastructure improvements, such as BART rail extensions, highway and transit improvements, local street and road enhancements, intermodal projects and other local projects.

In addition to the 26 voter-approved capital projects, Alameda CTC added the following projects approved by the Commission pursuant to the Expenditure Plan: the Vasco Road Safety Improvement Project from the Measure B Congestion Relief Emergency Fund in 2003, the I-80 Integrated Corridor Management Project in 2008, the I-880/23rd and 29th Avenues Interchanges and the Countywide Transportation Plan/Transportation Expenditure Plan in 2010, and the Studies for Congested Segments/Locations on the CMP Network in 2011.

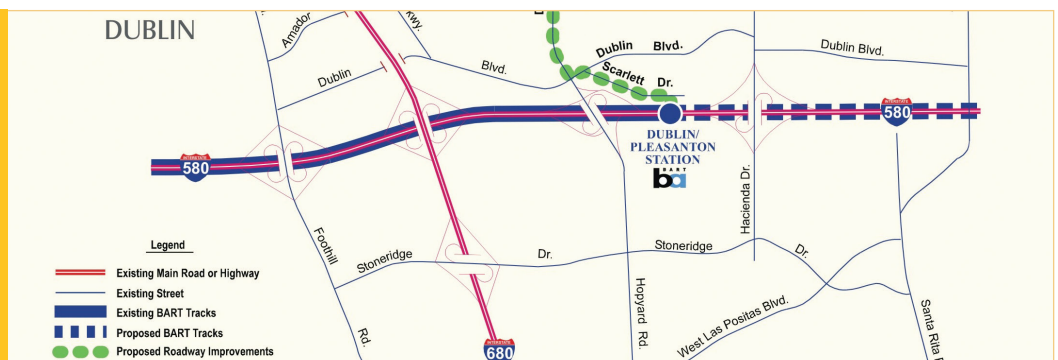
Some of the projects in the 2000

Measure B Expenditure Plan are funded for specific phases. The local sales tax dollars allow the initial project development phases to move forward, while project sponsors secure other funding sources to complete construction. This allows Alameda CTC and local jurisdictions to efficiently and expeditiously deliver projects. By 2012, the midpoint of the current transportation sales tax measure, Alameda CTC had delivered 95 percent of all capital project investments.

The chart on the next page shows the project phases, schedule, funding commitments and total project costs for the capital projects.

Notes for chart on page 7:

- <sup>1</sup> The Current Phase is based on a status date effective March 31, 2015. The Project Closeout phase indicates construction is complete, and the project financial closeout is underway.
- <sup>2</sup> Project Planning Areas include C = Central County, E = East County, N = North County, S = South County.
- <sup>3</sup> Construction schedules shown are subject to change based on project delivery activities. Begin Construction date shown is typically the expected contract award date. End Construction date for BART capital projects is the point at which transit/revenue service will begin.
- <sup>4</sup> The funding amounts shown are subject to change based on programming and allocation activities by the applicable governing agency.





## Project Status as of March 2015

Current Phase <sup>1</sup>	2000 MB Project No. and Project Name		County Area <sup>2</sup>	Construction Schedule <sup>3</sup>		Project Funding Sources <sup>4</sup> (\$ X million)						Total Cost/ Funding	FY13-14 Expenditures
				Begin	End	2000 MB	Federal	State	Regional	Local	Other		
Complete	05	Fruitvale Transit Village	N	Oct 2002	Mar 2004	4.4	0.0	7.7	0.0	1.4	0.0	13.5	0.0
Complete	17	Hesperian/Lewelling Blvd Intersection Improvements	C	Oct 2003	Oct 2012	0.7	0.0	0.0	0.0	0.1	0.0	0.8	0.0
Complete	21	I-238 Widening	C	Sep 2006	Oct 2009	81.0	18.3	29.2	0.0	3.3	0.0	131.8	0.0
Complete	11	I-880/Washington Avenue Interchange Improvement	C	Apr 2009	May 2010	1.3	0.5	0.0	0.0	1.4	0.0	3.2	0.0
Complete	20	Newark Local Streets Rehabilitation	S	Jun 2003	Feb 2006	1.4	0.0	0.0	0.0	4.1	0.0	5.5	0.0
Complete	16	Oakland Local Streets Rehabilitation	N	Jul 2004	Dec 2006	5.3	0.0	0.0	0.0	0.0	0.0	5.3	0.0
Complete	06	Union City Intermodal Station	S	Jun 2007	Mar 2012	12.6	20.4	7.7	0.0	6.3	0.0	47.0	0.0
Complete / Construction	27	Emerging Projects (Congestion Relief Emergency Fund)	N/E	Various	Various	11.0	18.0	242.7	11.2	29.5	0.0	312.4	0.8
Complete / Construction	14	I-580 Auxillary Lanes	E	Various	Various	14.5	6.4	115.8	14.5	1.0	0.1	152.3	0.6
Complete / Construction	18	Westgate Parkway Extension	C	Various	Various	7.9	0.0	0.0	0.0	0.0	0.0	7.9	0.1
Complete / Construction	07	San Pablo/Telegraph Avenue Corridor Transit Improvements	N	Various	Various	24.5	84.2	13.7	65.7	0.3	5.0	193.3	2.7
Complete / Environmental	08	I-680 Sunol Express Lanes Improvements	S/E	Various	Various	35.2	5.4	8.0	0.0	8.0	0.0	56.6	-0.9
Project Closeout	12	I-580/Castro Valley Interchanges Improvements	C	Jun 2008	Jun 2011	11.5	1.9	4.8	0.0	15.0	0.0	33.2	0.0
Project Closeout	23	Isabel Avenue - Route 84/I-580 Interchange	E	Jan 2009	Mar 2012	25.1	11.3	44.4	0.0	32.4	0.0	113.2	0.7
Project Closeout	13	Lewelling/East Lewelling Blvd Widening	C	Jul 2009	Oct 2012	13.6	0.0	4.3	0.0	13.8	0.1	31.8	1.4
Project Closeout	03	BART Oakland Airport Connector	N	Sep 2010	Nov 2014	89.1	130.7	78.9	146.2	39.3	0.0	484.2	23.9
Plant Est/ Construction	24	Route 84 Expressway	E	Various	Various	96.5	0.0	16.1	0.0	10.0	3.5	126.1	10.6
Construction	01	Altamont Commuter Express Rail	S/E	Various	Various	13.2	123.1	155.3	0.0	182.6	0.0	474.2	3.4
Construction	02	BART Warm Springs Extension	S	Sep 2009	Dec 2015	224.4	0.0	295.4	321.0	49.2	0.0	890.0	41.8
Construction	04	Downtown Oakland Streetscape Improvement	N	Sep 2007	Mar 2016	6.4	0.0	0.4	0.0	2.4	0.3	9.5	0.0
Construction	15	Route 92/Clawiter - Whitesell Interchange and Reliever Route	C	Mar 2015	Oct 2016	27.0	0.0	0.0	0.0	0.7	0.0	27.7	7.6
Design	19	East 14th St/Hesperian Blvd/150th St Intersection Improvement	C	Jan 2016	Sep 2017	3.2	0.0	0.0	0.0	2.8	0.0	6.0	0.0
Design	09	Iron Horse Transit Route	E	Jan 2016	Jun 2017	6.3	0.0	0.0	0.0	2.1	0.0	8.4	0.0
Environmental	25	Dumbarton Corridor Improvements	S	Various	Various	19.4	0.0	0.0	0.0	0.6	0.0	20.0	0.0
Environmental / ROW	26	I-580 Corridor/BART to Livermore Studies	E	Various	Various	41.8	0.2	30.9	125.5	1.8	6.9	207.1	2.3
Environmental	10	I-880/Broadway-Jackson Interchange Improvements (Study Only)	N	N/A	N/A	8.1	0.0	0.0	0.0	2.5	0.0	10.6	0.0
Scoping	22	I-680/I-880 Cross Connector Studies (Study Only)	S	N/A	N/A	1.2	0.0	1.0	0.0	0.3	0.0	2.5	0.0
Project Totals:						\$786.6	\$420.3	\$1,056.3	\$684.1	\$410.9	\$15.9	\$3,374.1	\$95.0

### NEW PHOTO OF CWC MEMBERS SHOWING THEM MEETING.

"Each year, the Citizens Watchdog Committee carefully reviews and analyzes Alameda CTC's Measure B expenditures to help ensure that funds are spent in accordance with the measure passed by Alameda County voters. This process is an important part of seeing that the vibrant and livable Alameda County the voters envisioned with the passage of Measure B comes to pass.

"The CWC is pleased to report that, for the 13th year in a row, Alameda CTC received a clean, unmodified opinion from the agency's independent auditors. These results provide Alameda County residents and businesses with a strong assurance that the Measure B transportation sales tax continues to deliver on its promise."

— James Paxson, CWC Chair

#### Questions or Comments?

Email the CWC at [contact@alamedactc.org](mailto:contact@alamedactc.org) or sign up to receive e-mail notifications and our bimonthly newsletter at [www.AlamedaCTC.org](http://www.AlamedaCTC.org).



#### Follow us on:

[www.facebook.com/AlamedaCTC](http://www.facebook.com/AlamedaCTC)  
<http://twitter.com/AlamedaCTC>  
[www.youtube.com/user/AlamedaCTC](http://www.youtube.com/user/AlamedaCTC)



1111 Broadway  
 Suite 800  
 Oakland, CA 94607  
 510.208.7400  
[AlamedaCTC.org](http://AlamedaCTC.org)

## CWC Members

### Name

### Appointer

James Paxson, Chair	East Bay Economic Development Alliance
Deborah Taylor, Vice Chair	Supervisor Wilma Chan, District 3
Petra Brady*	Alameda County Mayors' Conference, District 4
Cheryl Brown	Alameda Labor Council AFL-CIO
Cynthia Dorsey	Alameda County Mayors' Conference, District 5
Peter Michael Dubinsky*	Supervisor Richard Valle, District 2
Sandra Hamlat	Bike East Bay
Herb Hastings	Paratransit Advisory and Planning Committee
James Haussener*	Supervisor Nate Miley, District 4
Miriam Hawley	League of Women Voters
Steven Jones	Alameda County Mayors' Conference, District 1
William Klink*	Alameda Labor Council AFL-CIO
Brian Lester	Supervisor Scott Haggerty, District 1
Jo Ann Lew	Alameda County Mayors' Conference, District 2
Murphy McCalley	Supervisor Nate Miley, District 4
Glenn Naté	Supervisor Richard Valle, District 2
Patrishia "Pat" Piras	Sierra Club
Harriette Saunders	Alameda County Mayors' Conference, District 3
Robert A. Tucknott	Alameda County Mayors' Conference, District 4
Hale Zukas	Supervisor Keith Carson, District 5
Vacancy	Alameda County Taxpayers Association

\*Members resigned or their terms ended within this reporting period.

### How to Get Involved

Alameda CTC and the Citizens Watchdog Committee invite your participation to plan, fund and deliver transportation projects and programs that enhance mobility throughout Alameda County. Join one of Alameda CTC's community advisory committees — in addition to the CWC, the public serves on the Bicycle and Pedestrian Advisory Committee and the Paratransit Advisory and Planning Committee — or feel free to participate in and attend public meetings. Visit [www.AlamedaCTC.org](http://www.AlamedaCTC.org) to learn more about opportunities to get involved.

### Further Information

The complete 2000 Measure B Expenditure Plan, this report, agency compliance audits and reports and Comprehensive Annual Financial Reports are available at [www.AlamedaCTC.org](http://www.AlamedaCTC.org). Copies of these publications are also available at the Alameda CTC offices at 1111 Broadway, Suite 800, Oakland, CA 94607; you can reach Alameda CTC at 510.208.7400. Contact your local jurisdiction for information on Measure B-funded projects and programs; visit [http://www.alamedactc.org/app\\_pages/view/8072](http://www.alamedactc.org/app_pages/view/8072) or your jurisdiction's website.