

OneBayArea

Sustainable Communities Strategy



A Local-Regional Partnership

Alameda County
CWTP-TEP Technical Advisory Working Group
February 10, 2011



1

SCS Purpose

To build a Bay Area
that thrives and prospers...

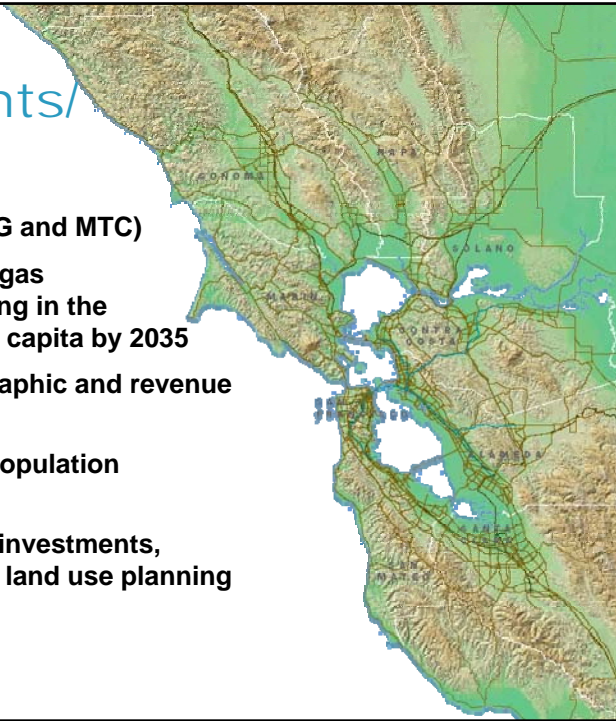
- Walkable, affordable places with services and amenities
- Sustainable transportation system
- Attractive place for business
- Protected natural resources
- Safe, healthy, and resilient communities



Plan Requirements/ Goals

- Adopt by 2013 (ABAG and MTC)
- Reduce greenhouse gas emissions from driving in the Bay Area by 15% per capita by 2035
- Use realistic demographic and revenue assumptions
- House the region's population at all income levels
- Align transportation investments, housing growth, and land use planning

OneBayArea
Working for Sustainability



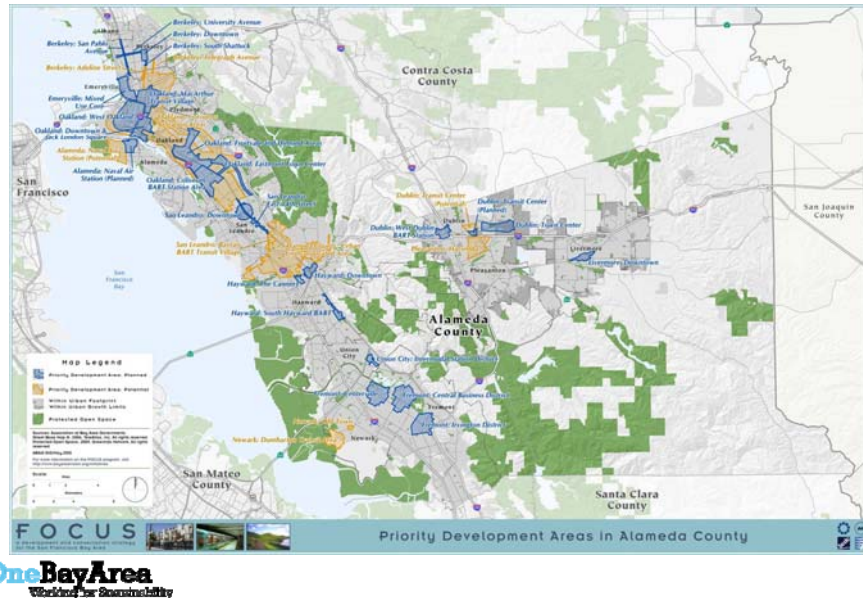
What is New?

- Regional Transportation Plan will align with and support Sustainable Communities Strategy land use pattern.
- Regional Housing Needs Allocation changes to an 8-year cycle.
- Regional Housing Needs Allocation will be consistent with the Sustainable Communities Strategy.

OneBayArea
Working for Sustainability



Building on an Existing Framework



5

Potential Investment Strategies

- Infrastructure bank to support investments in neighborhoods with housing and jobs close to transit
- Grants for affordable housing close to transit
- Transportation investments that reduce greenhouse gas emissions



6

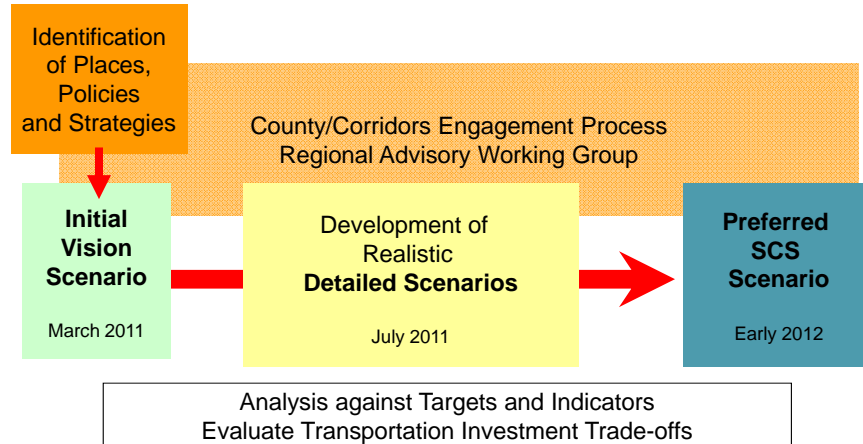
Initial Vision Scenario

- Starting place for dialogue about the SCS
- Future distribution of households and jobs
- Assumes policies, strategies, and incentives to support growth are in place
- Initial assessment of how we do on performance targets
- To be released March 11

Initial Vision Scenario Growth Distribution

- Strengthen the character of places through sustainable development
- Accommodate future growth within urban boundaries
- Locate future housing and jobs next to transit, amenities, and services
- Strengthen regional transit corridors that allow access to jobs and services
- Align regional transportation funding with production of sustainable and affordable housing

SCS Scenario Development



Developing Detailed Scenarios

- Iterative process based on feedback from local jurisdictions, CMAs, regional agency boards, public
 - TAWG, meetings with elected officials, public workshops
- To be refined with additional information about constraints, transportation investments

Regional Housing Needs Allocation (RHNA)

- First meeting of SCS Housing Methodology Committee in January
- RHNA must be consistent with land use pattern in SCS
- How do the SCS and RHNA relate to one another?
 - SCS looks at specific locations for housing; RHNA allocations to jurisdiction
 - 25-year horizon for SCS vs. 8-year RHNA period

SCS/RTP Public Participation Plan

- Local government workshops in each county
- Public workshops in all nine counties
- Competitive grants for targeted outreach in low-income communities