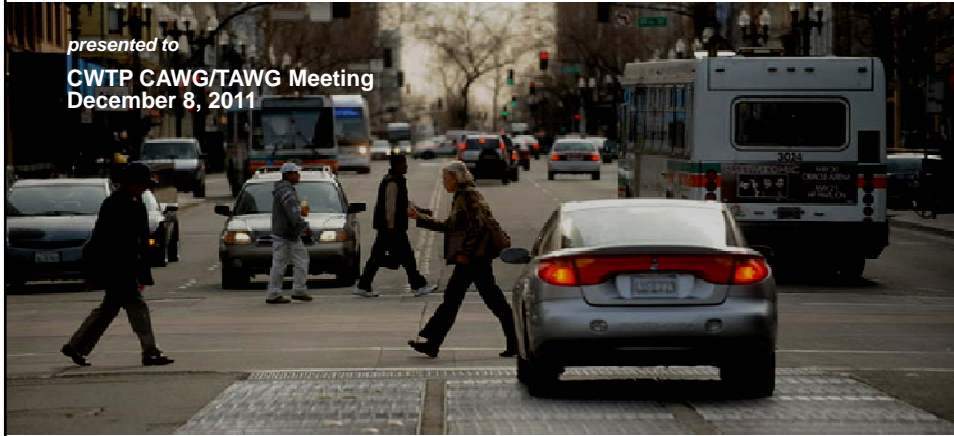
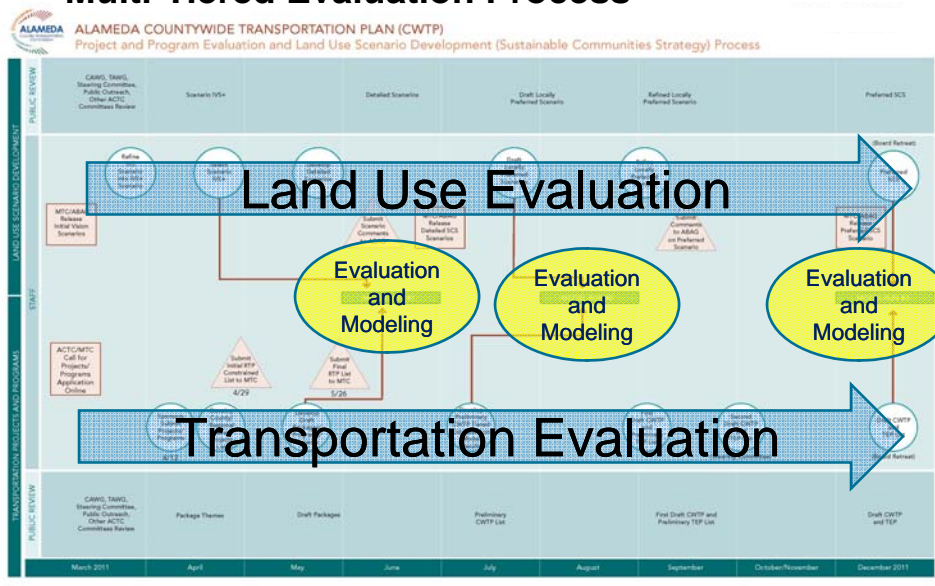


Alameda Countywide Transportation Plan Update Scenario Evaluation Results

presented to
CWTP CAWG/TAWG Meeting
December 8, 2011



Multi-Tiered Evaluation Process



Scenario Evaluation

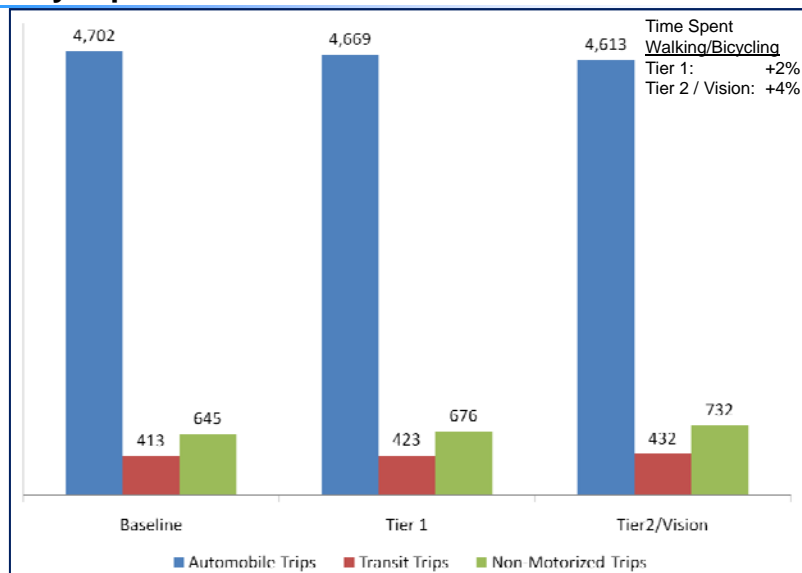
Key Features

- Overall Countywide Performance
- Three Transportation Investment Scenarios
 - » Baseline
 - » Tier 1
 - » Tier2 / Vision
- Constrained Funding for Tier 1: \$6.8 Billion
 - » Assumes extension of sales tax, not augmentation
- More Focused Land Use
- Refined Performance Measures

3

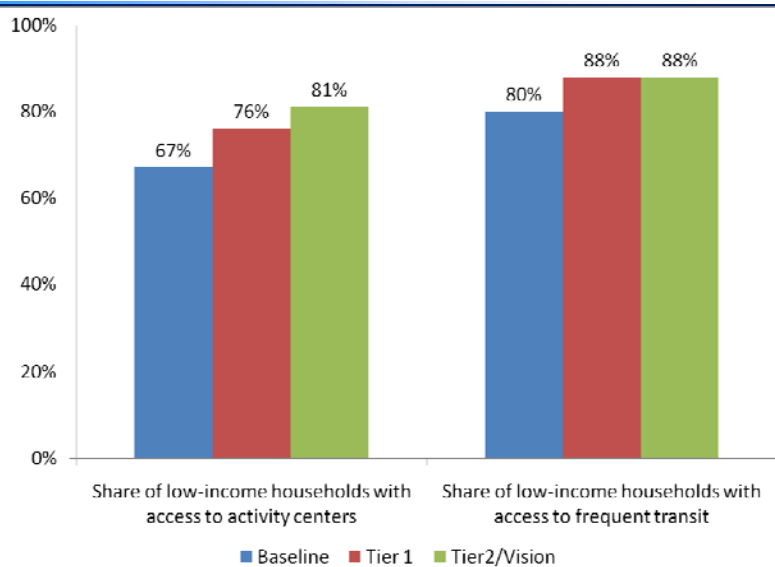
Supporting Modal Shifts and Healthy Living

Daily trips in thousands



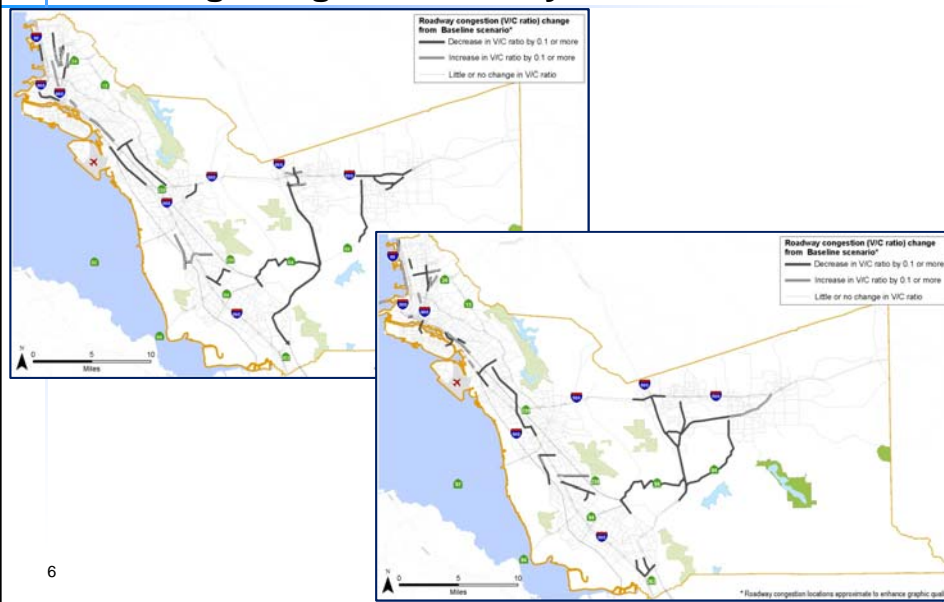
4

Improving Access to Activity Centers and Frequent Transit



5

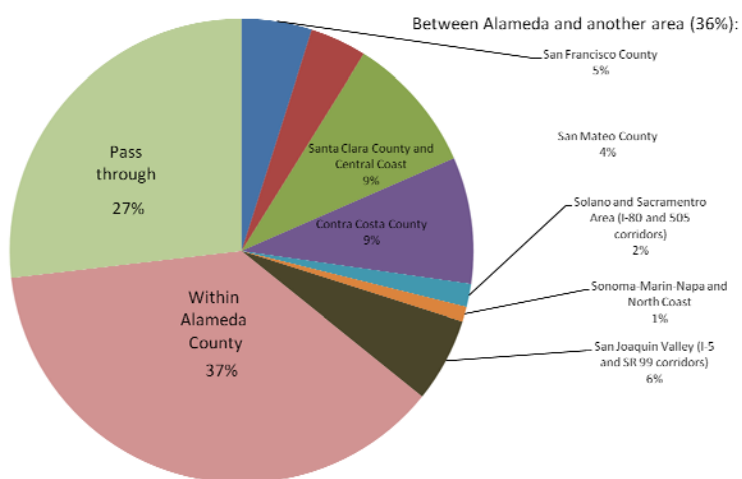
Reducing Congestion in Key Corridors



6

Accommodating Auto Pass-Through Trips Regional Coordination Needed

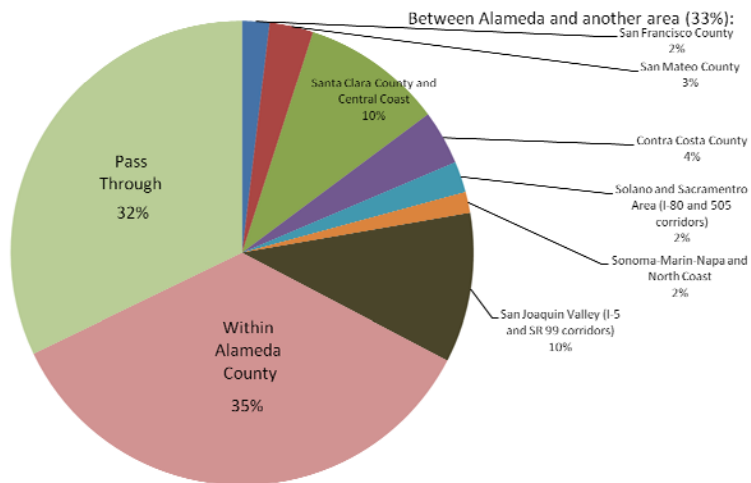
Vehicle Miles of Travel in Alameda County, 2035 - Auto



7

Accommodating Truck Pass-Through Trips Regional Coordination Needed

Vehicle Miles of Travel in Alameda County, 2035 - Truck



8

Supporting Regional GHG Reduction Efforts

- **Small Greenhouse Gas Reductions**
 - » 0.3% reduction between Baseline and Tier 1
 - » 1.7% reduction between Baseline and Tier 2 / Vision
- **Other GHG Reduction Elements**
 - » **Included in Baseline Scenario**
 - Focused land use in Alameda County
 - Vehicle technology and fuel
 - » **Strategies Outside Alameda County**
 - Land use
 - Transportation investments

9

Next Steps

- **Revise CWTP, Chapter 6 and release Draft CWTP (December 2011/January 2012)**
- **Send draft CWTP priorities to MTC (December 2011)**
- **Refine model results based on final land use scenario (spring, 2012)**
- **Adopt Final CWTP (May/June 2012)**
- **Potentially revise CWTP to include additional funding based on TEP outcome (fall, 2012)**

10