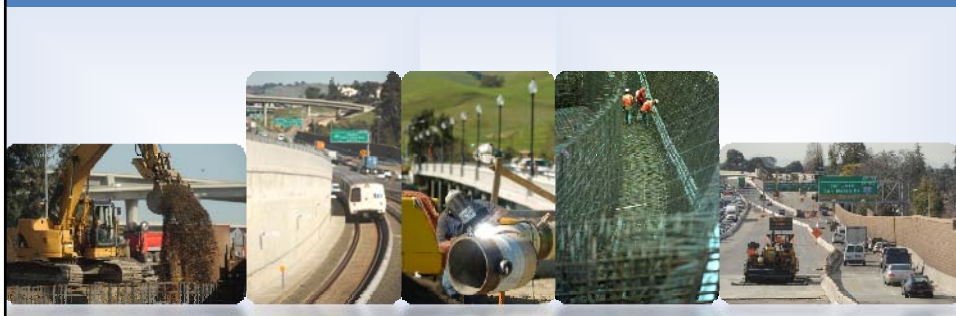


Alameda Countywide Transportation Plan & Transportation Expenditure Plan

Presented to CAC January 20, 2011



Presentation Overview

- ▣ What are:
 - The Countywide Transportation Plan (CWTP)?
 - The Transportation Expenditure Plan (TEP)?
- ▣ Funding Context
- ▣ Planning in a New Context
- ▣ Process
 - Current Events
 - Next Steps
- ▣ Opportunities to Participate

Planning in a New Context

Alameda CTC = new agency transitions



+



=

ALAMEDA
County Transportation
Commission

Alameda Countywide Transportation Plan (CWTP) 2012

- ▣ Identifies transportation needs & priorities
- ▣ 25-year horizon
- ▣ Many funding sources
- ▣ Guides eligibility for regional funding
- ▣ Updated every 4 years

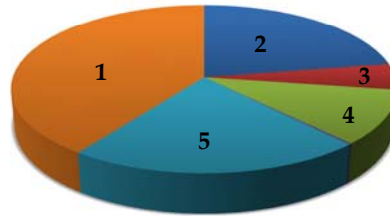


Transportation Expenditure Plan (TEP)

- ▣ Currently: "Measure B"
 - ½ cent sales tax
 - Passed by voters 1986
 - Reauthorized 2000
 - Valid 2002-2022
- ▣ Revenue Split:
 - 60% Programs
 - 40% Capital Projects

The TEP describes how **ONE FUNDING SOURCE** will be spent.

Current Measure B Funding Split



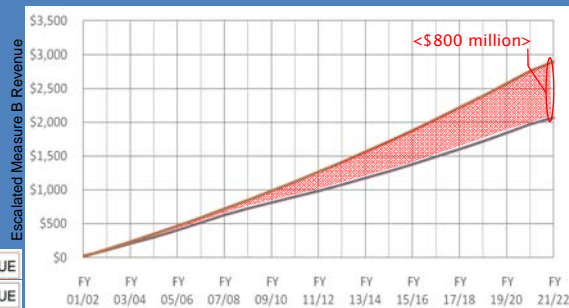
- 1 Capital Projects, 40%
- 2 Local Streets and Roads, 22%
- 3 Bicycle and Pedestrian Safety, 5%
- 4 Special Transportation for Seniors and People with Disabilities, 10.5%
- 5 Mass Transit, 22%

Current Measure B Shortfall

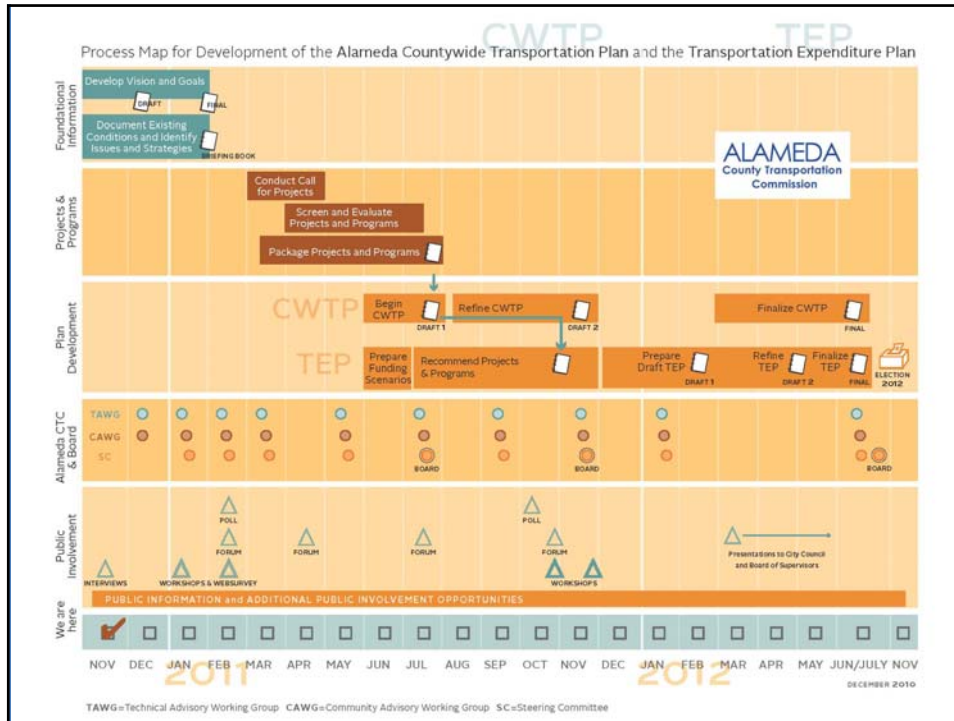
Measure B Revenue Forecasts:

- ▣ Original..... \$2.9 million
- ▣ Current..... \$2.1 million
- ▣ Projected Gap.....(\$800 million)

- *Programs shortfall:* (\$500 million)
- *Capital Projects shortfall:* (\$300 million)



Baseline	REVENUE
Current	REVENUE



Draft Vision

Alameda County will be served by a premier transportation system that **supports a vibrant and livable Alameda County** through a connected and integrated multimodal transportation system promoting sustainability, access, public, health and economic opportunities.

Goals Overview

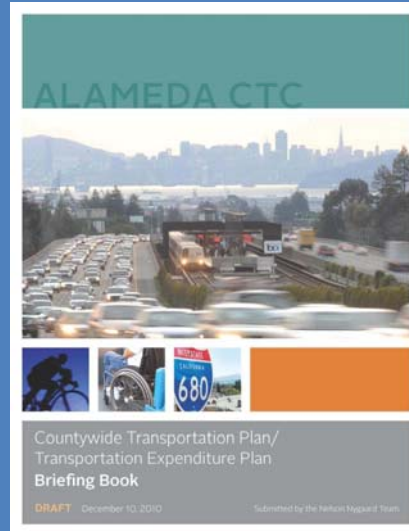
Our vision recognizes the need to maintain and operate our existing transportation infrastructure and services while developing new investments that are targeted, effective, financially sound and supported by appropriate land uses. Mobility in Alameda County will be guided by **transparent decision making and measureable performance indicators and will be supported by these goals:**

Draft Goals

- ▣ **Multimodal**
- ▣ **Accessible , Affordable and Equitable** for people of all ages, incomes, abilities and geographies
- ▣ **Integrated** with land use patterns and local decision making
- ▣ **Connected** across the county, within and across the network of streets, highways, transit, bicycle and pedestrian routes
- ▣ **Reliable and Efficient**
- ▣ **Cost Effective**
- ▣ **Well Maintained**
- ▣ **Safe**
- ▣ **Supportive of a Healthy and Clean Environment**

The Briefing Book

1. Introduction/Summary
2. Demographics/Travel Demand
3. Land Use and GHG
4. Highways/Roads/TSM
5. Transit
6. Accessibility Programs
7. Biking
8. Pedestrian Travel
9. Goods Movement
10. Parking and TDM
11. Funding and Financial Outlook



Future Schedule

2011:

- ❑ Draft CWTP Projects/Programs – July
- ❑ 1st Draft CWTP – September
- ❑ TEP Project/Program Packages – September
- ❑ 2nd Draft CWTP, Draft TEP -November

2012:

- ❑ Draft CWTP-TEP Plans Released – January
- ❑ Second Wave Outreach – January - June
- ❑ Adopt Final CWTP-TEP Plans- July
- ❑ TEP Submitted on Ballot – August
- ❑ Election – November

Workshops

Weekends:

- ▣ Sat., February 26
 - 10:00 am-11:30 am
 - Fremont Public Library
- ▣ Sat., March 5
 - 10:30 am-12 pm
 - Dublin City Hall

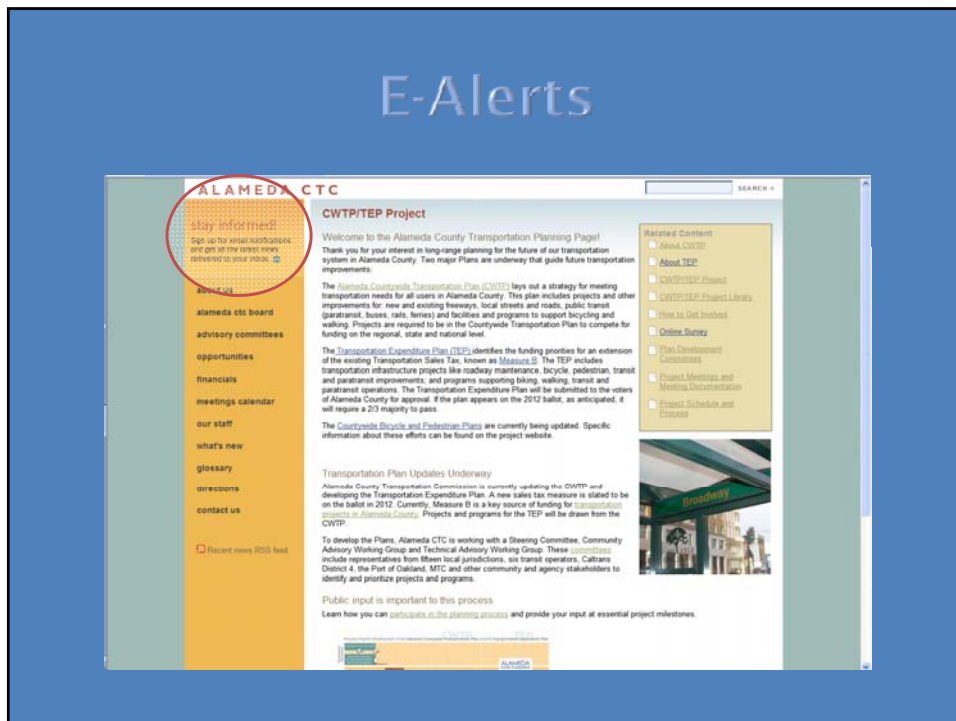
Weeknights:

- ▣ March 2
 - 7-8:30 pm
 - Alameda CTC
- ▣ March 9
 - 7-8:30 pm
 - Hayward City Hall

*Round 2 :
October/November 2011*

Outreach Toolkit





THANK YOU!
QUESTIONS?