



Community Advisory Working Group Meeting Agenda

Thursday, October 6, 2011, 2:30 to 5 p.m.
1333 Broadway, Suite 300, Oakland, CA 94612

Meeting Outcomes:

- Receive an update on the Countywide Transportation Plan and Transportation Expenditure Plan (CWTP-TEP) activities since the last meeting
- Discuss and provide input on the preliminary TEP outline and program allocations formulas
- Receive an update on the draft CWTP comments and the evaluation process
- Receive an update on public outreach including a polling update
- Receive an update on the Sustainable Communities Strategy (SCS)/Regional Transportation Plan (RTP) process

2:30 – 2:35 p.m.	1. Welcome and Introductions	
2:35 – 2:40 p.m.	2. Public Comment	
2:40 – 2:45 p.m.	3. Review of July 7, 2011 Minutes <u>03 CAWG Meeting Minutes 091511.pdf</u> – Page 1	
2:45 – 2:50 p.m.	4. Update on CWTP-TEP Activities Since Last Meeting	
2:50 – 3:30 p.m.	5. Discussion on the Preliminary TEP Outline and Program Allocations Formulas <u>05 Draft TEP Outline.pdf</u> – Page 13 <u>05A Draft TEP Program Allocations.pdf</u> – Posted online prior to meeting	
3:30 – 4:15 p.m.	6. Discussion on Public Outreach and Polling <u>06 Outreach Meeting Dates Update.pdf</u> – Page 17 <u>06A Final Polling Questions Update.pdf</u> – Page 19 <u>06B Outreach Toolkit Presentation</u> – Will be presented at the meeting	
4:15 – 4:45 p.m.	7. Update on the Draft CWTP Comments and Evaluation Process <u>07 Draft CWTP Comments.pdf</u> – Posted online prior to meeting <u>07A CWTP Evaluations Report Comments.pdf</u> – Posted online prior to meeting	

- 4:45 – 4:50 p.m. **8. SCS/RTP: Update on Countywide and Regional Processes** |
08 Memo Regional SCS-RTP CWTP-TEP Process.pdf – Page 31
- 4:50 – 4:55 p.m. **9. Update: Steering Committee, CAWG, and TAWG and** |
Other Items/Next Steps
09 CWTP-TEP Committee Meetings Schedule.pdf – Page 45
09A CAWG Roster.pdf – Page 49
- 4:55 – 5:00 p.m. **10. Member Reports/Other Business**
- 5 p.m. **11. Adjournment**

Key: A – Action Item; I – Information/Discussion Item; full packet available at www.alamedactc.org

Next Meeting:

Joint Steering Committee and CAWG

Date: October 7, 2011

Time: 12:00 to 1:30 p.m.

Location: Alameda CTC Offices, 1333 Broadway, Suite 300, Oakland, CA 94612

CAWG

Date: November 3, 2011

Time: 2:30 to 5 p.m.

Location: Alameda CTC Offices, 1333 Broadway, Suite 300, Oakland, CA 94612

Staff Liaisons:

Tess Lengyel, Deputy Director of Policy,
Public Affairs and Legislation
(510) 208-7428
tlengyel@alamedactc.org

Diane Stark, Senior Transportation Planner
CAWG Coordinator
(510) 208-7410
dstark@alamedactc.org

Beth Walukas, Deputy Director of Planning
(510) 208-7405
bwalukas@alamedactc.org

Saravana Suthanthira, Senior Transportation Planner
TAWG Coordinator
(510) 208-7426
ssuthanthira@alamedactc.org

Location Information: Alameda CTC is located in Downtown Oakland at the intersection of 14th Street and Broadway. The office is just a few steps away from the City Center/12th Street BART station. Bicycle parking is available inside the building, and in electronic lockers at 14th and Broadway near Frank Ogawa Plaza (requires purchase of key card from bikelink.org). There is garage parking for autos and bicycles in the City Center Garage (enter on 14th Street between Broadway and Clay). Visit the Alameda CTC website for more information on how to get to the Alameda CTC: <http://www.alamedactc.org/directions.html>.

Public Comment: Members of the public may address the committee regarding any item, including an item not on the agenda. All items on the agenda are subject to action and/or change by the committee. The chair may change the order of items.

Accommodations/Accessibility: Meetings are wheelchair accessible. Please do not wear scented products so that individuals with environmental sensitivities may attend. Call (510) 893-3347 (Voice) or (510) 834-6754 (TTD) five days in advance to request a sign-language interpreter.



Alameda CTC Community Advisory Working Group Meeting Minutes
Thursday, September 15, 2011, 12 p.m., 1333 Broadway, Suite 300, Oakland

Attendance Key (A = Absent, P = Present)

CAWG Members:

<u>A</u> Joseph Cruz	<u>P</u> JoAnn Lew	<u>A</u> Anthony Rodgers
<u>P</u> Charissa Frank	<u>P</u> Teresa McGill	<u>A</u> Raj Salwan
<u>A</u> Arthur Geen	<u>P</u> Gabrielle Miller	<u>P</u> Diane Shaw
<u>A</u> Chaka-Khan Gordon	<u>P</u> Betsy Morris	<u>P</u> Sylvia Stadmire
<u>A</u> Earl Hamlin	<u>P</u> Betty Mulholland	<u>P</u> Midori Tabata
<u>A</u> Unique Holland	<u>P</u> Eileen Ng	<u>P</u> Pam Willow
<u>P</u> Lindsay Imai Hong	<u>P</u> James Paxson	<u>P</u> Hale Zukas
<u>A</u> Roop Jindal	<u>P</u> Patrisha Piras	
<u>A</u> David Kakishiba	<u>P</u> Joel Ramos	

Staff:

<u>P</u> Tess Lengyel, Deputy Director of Policy, Public Affairs and Legislation	<u>P</u> Diane Stark, Senior Transportation Planner
<u>P</u> Beth Walukas, Deputy Director of Planning	<u>P</u> Saravana Suthanthira, Senior Transportation Planner
<u>P</u> Bonnie Nelson, Nelson\Nygaard	<u>P</u> Angie Ayers, Acumen Building Enterprise, Inc.

1. Welcome and Introductions

Tess Lengyel called the Community Advisory Working Group meeting to order at 1:05 p.m. and welcomed Hale Zukas to the group.

Guests Present: Dave Campbell, East Bay Bicycle Coalition; Jamey Dempster, Cambridge Systematics; Ryan Greene-Roesel, Cambridge Systematics, Sara LaBatt, EMC Research; Phil Olmstead, Nelson\Nygaard; Laurel Poeton, Alameda CTC; Cathleen Sullivan, Nelson\Nygaard; Carolyn Verheyen, MIG

2. Public Comments

There were no public comments.

3. Review of July 7, 2011 Meeting Minutes

CAWG members reviewed the meeting minutes from July 7, 2011, and by consensus approved them as written.

4. Update on CWTP-TEP Activities Since Last Meeting

Tess Lengyel gave an update on the Countywide Transportation Plan (CWTP) activities since the last meeting. She informed the committee that Alameda CTC has performed many activities for the administrative draft of the CWTP, including a financially constrained list, and began work on parameters for the development of the Transportation Expenditure Plan

Staff is currently working on responses to the comments submitted on the Evaluation Outcomes, which staff will post on the website at the end of September, or early October.

5. Presentation and Discussion on the Draft CWTP

Beth gave a presentation on the CWTP. She stated that CAWG received an administrative draft of the CWTP, which contains all chapters except chapter 6. Staff is requesting input from the group on financially constrained projects and programs that will appear in chapter 6 (see Attachment 05B for a list of the projects and programs). Beth requested that the group submit comments in writing by September 20. Alameda CTC will incorporate input from CAWG and TAWG in chapter 6, and staff will distribute the first draft of the CWTP to the Steering Committee for approval at the September 22, 2011 meeting. Bonnie Nelson stated that chapters 5 and 6 are the chapters most likely to change as Alameda CTC finalizes the funding and projects and programs.

The discussion centered around the funding distribution shown in Table 3 on page 51 in the agenda packet. The members expressed the following:

- Make sure that money goes toward maintenance first and then toward expansion.
- Make sure to invest in transit and invest less in highways, even though the highways must be safe.
- A large amount of money is allocated to bicycle and pedestrian projects and programs. Staff stated that the bicycle and pedestrian funds are also used to improve trails and sidewalks.
- Members noted that safe roads are needed as well as maintaining a highly functional system
- What can the group expect to see in respect to Title VI for funding allocation? Staff noted that part of Title VI is performing outreach and reaching diverse communities. As was stated in earlier meetings, Alameda CTC will look at title VI on a countywide basis, not project-by-project; however, Title VI will be addressed by the project sponsors as the individual projects are developed.

Staff explained that the Steering Committee will release the administrative draft of the CWTP and the financially constrained list of projects and programs on September 22. In October, Alameda CTC will do a second round of evaluations. In November, the second draft of the CWTP will be available.

6. Breakout Session Discussion:

A. TEP Parameters and Preliminary TEP Projects and Programs Packaging

Bonnie reviewed the proposed TEP parameters recommended for the draft TEP. The parameters may change as a result of the poll and public outreach. The recommendation for approval by the Steering Committee is listed on pages 61 through 64 in the agenda packet. Bonnie informed the committee that these parameters are only for the new funding generated by the augmentation of Measure B and will not impact the current measure. She also mentioned that the Steering Committee generally supports the idea of innovation and technology, but was not in agreement about a new category in addition to the projects and programs categories.

Staff informed the group that Alameda CTC will perform a lot of outreach, and it may influence the TEP.

Questions/feedback from members:

- Performance Measures E: What is the motivation behind extending the number of years from five to seven to receive environmental approvals and to have a fully funded project? Staff noted that currently it takes about seven years to get funding for projects and that is why the change was suggested.
- Rainy Day Fund: What will we use it for? Staff stated that in the current measure, the paratransit program has created a de facto rainy day fund, and awards some Measure B dollars through a grant funded program. In the years when the Measure B revenues are low, the agency does not award grants, but uses this money to sustain programs. In some years, revenues will be higher than expected and the demand for project funding will be lower than expected. This could create a pool of money for future use.
- If we go for policy changes to meet greenhouse gas emission reductions, how will we fund them? Staff stated that Transportation Demand Management program may help to fund these efforts. The current expenditure plan specifies a congestion relief fund, and this money can address these needs.
- How do we prevent money from being defunded if it's not utilized properly? The current expenditure plan has an amendment process specified for capital projects and the programs agreements have clauses for the Alameda CTC right to withhold funds.

Bonnie gave an overview of the TEP allocation exercise. The purpose of the exercise is to:

- Let the committee members design their own TEP expenditure plan.
- Provide a venue by which members can evaluate the tradeoffs between various projects and programs within a realistic budget.
- Generate input about projects and programs and their funding levels to feed into a potential TEP expenditure plan.

The CAWG members separated into groups to run the TEP allocation exercise.

7. Report Back From Breakout Session

At the end of the breakout session, each group gave a summary of the information covered in its individual group to the full CAWG group. See Attachment A.

Members enjoyed the TEP allocation exercise and inquired if they can do this process again. Staff stated that it wanted to give the group an opportunity to see what the trade offs are. The goal is to take the findings from CAWG and TAWG and share it with the Commission. Alameda CTC will use an element of this tool in the public process, in the toolkit.

8. Discussion on the Outreach Process and Polling Questions

Sara LaBatt with EMC Research, Inc. gave an update on the fall 2011 poll. The poll is planned for early October with 800 interviews with each in 15 minutes. Participants will be given direction to evaluate two options in this poll: 1) extend and augment the half-cent transportation sales tax; or 2) augment now and extend later. The polling approach is to give half of the interviewee's option 1 and the other half option 2 to not confuse them by differences in two sets of questions.

Questions/feedback from the members:

- A member provided comments in advance of the meeting in the Attachment 08 handout. During the meeting, a member asked, "Should questions 6 and 7 read 'would you be likely' instead of 'are you likely?'"
- Generally, members stated that the language is too complex and suggested rewording of many of the questions to keep them simple, questions 8 through 11 in particular.
- A member made a suggestion to change the wording on question 41 to read as: "This measure encourages transit use by the next generation and substantial aid to getting to school safely by providing middle and high school students in the county with a transit pass."
- Another suggestion is to change question 7 to read "authorizes an additional half-cent ..."
- One member suggested to include questions related to the vision statement: Ask the interviewees how important air quality, health, and climate change are.
- Add a question on how rising transit costs are affecting residents.
- Include questions related to values and visions.
- Include questions asking about alternative modes of travel related to biking, walking, or transit.
- Generally, members said the survey is too long, and it may take longer than 15 minutes to complete.
- A member asked if question 19 through 49 will result in different answers. Sara stated that the point of this section is to determine the intensity of the response.

Tess announced that CAWG will have a regular meeting on October 6 starting at 2:30 p.m. A joint meeting with the Steering Committee and CAWG is scheduled for Friday, October 7 from 2:30 to 5 p.m.

Tess informed the group that Alameda CTC is finalizing the public meetings for the fall, and will hold five workshops around the county. Supervisor Carson is hosting a North County Sustainable Communities Strategy Leadership Summit on Wednesday October 12, 2011 from 1 to 4:30 p.m. at 12321 Oak Street, 5th Floor, Oakland, CA. The North County Transportation Forum will be held here on October 20, 2011 from 6:30 to 8:30 p.m.

9. SCS/RTP: Update on Countywide and Regional Processes

Staff requested that CAWG members independently review the information in the packet.

10. Update: Steering Committee, CAWG, and TAWG and Other Items/Next Steps

Staff requested that CAWG members independently review the information in the packet.

11. Member Reports

None

12. Staff Reports

CAWG inquired in the past if the OneBayArea grant funding will come to CAWG and TAWG for review. Tess informed the group that staff will not present the funding options to CAWG and TAWG. The Commission is currently reviewing and providing comments on the OneBayArea grant.

13. Other Business

None

14. Adjournment

The meeting adjourned at 5 p.m.

This page intentionally left blank.



MEMORANDUM

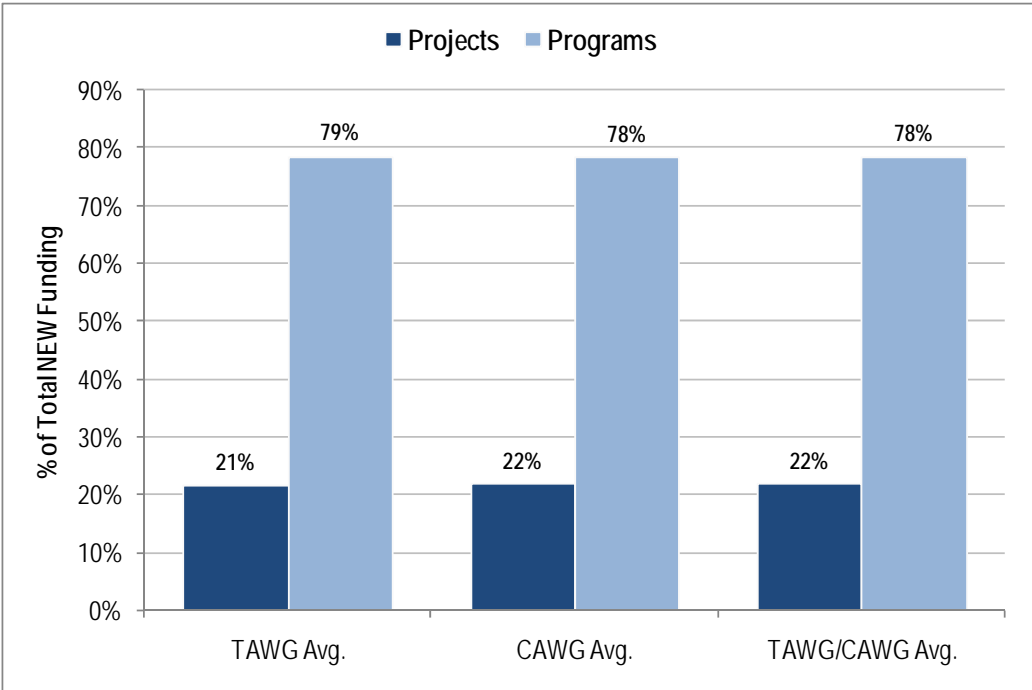
To: Alameda CTC Staff
From: Bonnie Nelson
Date: September 19, 2011
Subject: Summary of TAWG and CAWG TEP Simulation Exercise

Over the course of the TAWG/CAWG meetings a total of seven simulations were completed. These included 3 completed by TAWG members, 3 completed by CAWG members, and one completed by a single member of the public at the TAWG meeting. This memo provides a summary of the key themes drawn from those exercises.

Project vs. Program Split

- Members noted that they were not familiar with all the projects in the project list and therefore found some difficulty in understanding the project intent and benefit. Reviewing the applications at the meeting provided some clarity, but also took time which may have contributed to the following factors.
- Members had difficulty finding enough capital projects to reach the recommended 40% / 60% split between projects and programs. As shown in Figure 1, the average allocation for TAWG was 21% to projects and 79% to programs. CAWG was very similar, with 22% to projects and 78% to programs, on average. If it is desirable to fund more capital projects, the balance could be made up by moving programmatic capital projects into the capital component of the expenditure plan. This technique was used in a thoughtful way by one TAWG group, which achieved a 35% project split.
- It is important to note that time constraints with this exercise may have been a factor in the lower allocation to projects. Given more time, the groups may have chosen more projects, thus shifting the overall allocations. In particular, groups did not have enough time to carefully consider which of the programmatic capital projects could be shifted to the capital program.

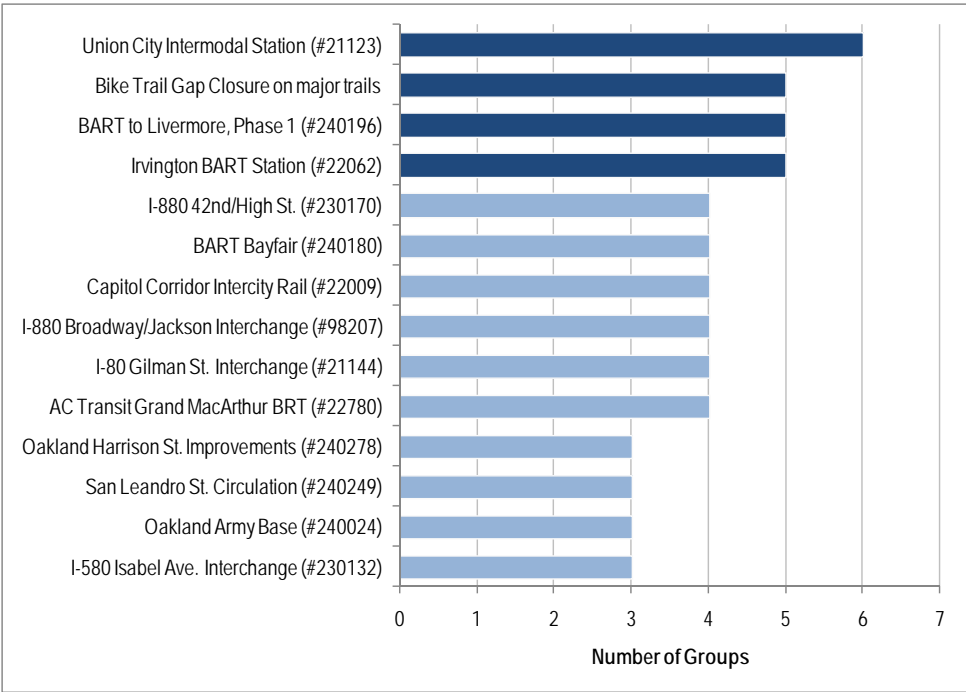
Figure 1 Average Split between Projects and Programs¹



Projects

- The most commonly selected projects are shown in Figure 2. The projects in dark blue can be considered “High Consensus” projects, as they were selected in at least five of the seven groups. The “Moderate Consensus” projects are in light blue, and denote projects that were selected by at least three groups.

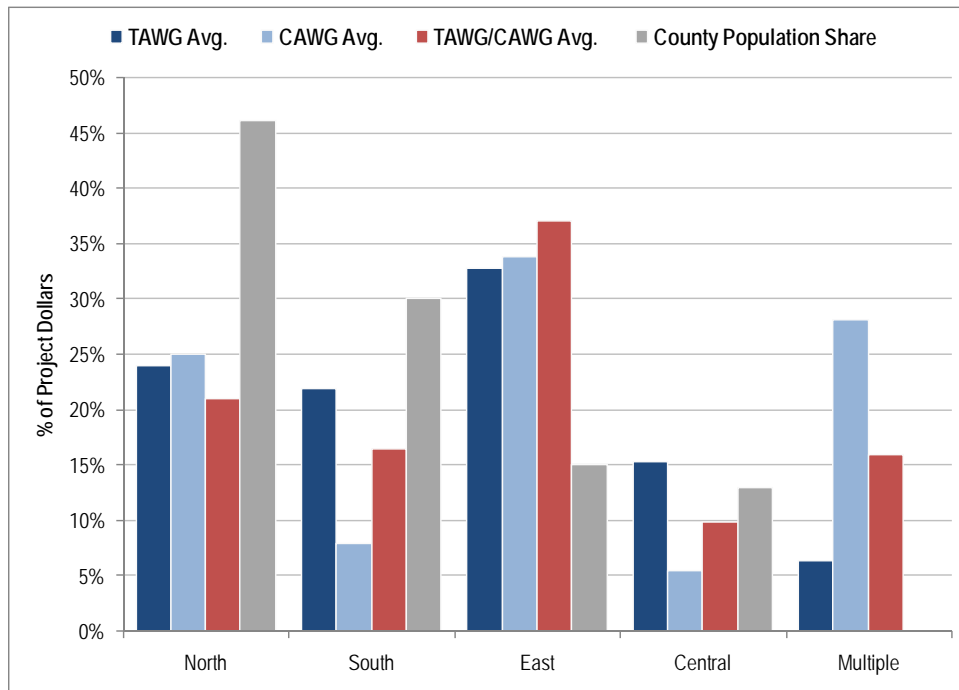
Figure 2 High (Dark Blue) and Moderate (Light Blue) Consensus Projects



¹ Includes many Programmatic Capital Projects

- Common project themes:
 - High consensus projects included only transit and bike projects.
 - BART projects and BART related projects dominated the high consensus group.
 - Bike Trail gap closure projects were found in many groups and included a number of different projects and funding levels.
 - Projects in the moderate consensus group were primarily lower cost highway oriented projects, including four interchanges spread throughout the County.
- None of the groups were able to achieve geographic equity with dollar allocations to projects alone. Figure 3 shows the average geographic distribution to each planning area.
- East County received the majority of the dollars allocated to projects, which is largely the result of numerous groups (5 of 7) allocating a substantial amount of money (between \$200 million and \$1.105 billion) to the BART to Livermore project. One CAWG group selected this project but did not come to consensus about how much money should be allocated to the project.
- North County consistently received the second highest allocation of project dollars, though still well below its share of population. Project allocations to South and Central Counties varied more substantially between TAWG and CAWG exercises.

Figure 3 Geographic Distribution of Project Dollars²



Programs

- All of the groups continued all of the current Measure B programs, including expanding the Transit Center program to include TOD, PDA, and Land Use policy support efforts. Figure 4 shows the average percentage breakdown for each of these five major program categories. A few observations are worth making:

² Includes \$1.3b allocated to Programmatic Capital Projects by one CAWG group - listed as "Multiple"

- Both TAWG and CAWG groups had difficulty managing the fact that a lower percentage allocation of a much higher amount will still result in more money going to a program than under the current Measure B. In other words, a smaller slice of a bigger pie is still larger than the previous slice of a smaller pie. For example, many groups increased the program percentage going to transit or to paratransit even though leaving the percentage the same as today would approximately double the amount of money available.
- Percent allocations to current programs were quite consistent across all groups. TAWG gave more to Local Streets & Roads than CAWG.
- The program totals in Figure 4 represent only the percentages being allocated to current Measure B programs. The current total for these programs is 60% - both CAWG and TAWG increased not only the dollar amount but the percentages being allocated to current programs.

Figure 4 Summary of Five Existing Program Categories

Program Category	Current Measure B	TAWG Avg.	CAWG Avg.	TAWG/CAWG Avg.
Local Streets & Roads	22.34%	26.7%	22.4%	23.6%
Mass Transit	21.92%	24.0%	25.3%	24.3%
Seniors & Disabilities	10.45%	11.3%	11.8%	11.4%
Bike/Ped	5.00%	5.8%	5.0%	7.0%
Land Use/TOD/PDA	0.19%	3.0%	2.5%	2.7%
Total	59.9%	70.8%	67.0%	69.0%

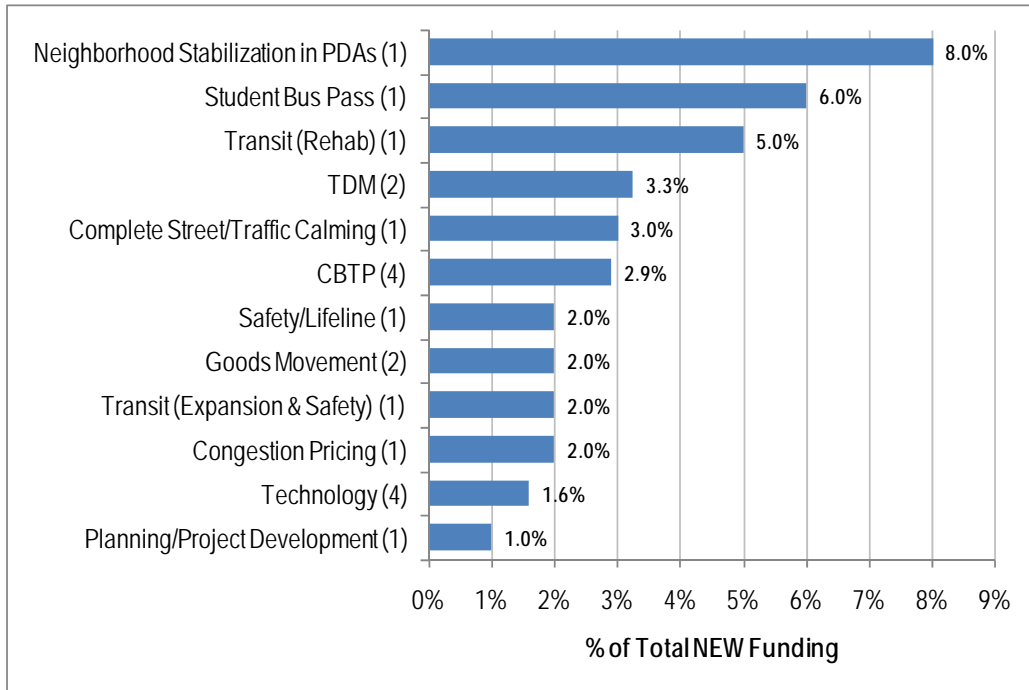
- Figure 5 shows the other added programs and their average percent allocations by group. Most of these new programs received small percentages compared with existing programs. These include two programs that represented a significant consensus – appearing in 4 of the 7 exercises:
 - Technology - (4 of 7 groups)
 - CBTP³ - (4 of 7 groups including one that explicitly included the student bus pass in this category)

Two additional programs were identified by two of the seven groups:

- Goods Movement - (2 of 7 groups)
- TDM – (2 of 7 groups)

³ Includes one group that included Student Bus Pass as part of CBTP.

Figure 5 Summary of New Program Categories (# of groups selected)



This page intentionally left blank.

Transportation Expenditure Plan to support
Transportation, Jobs and Mobility

I. Background and Summary

- A. Status of the current Measure B expenditure plan
- B. Benefits from the current Measure B expenditure plan
- C. The case for extending and augmenting the sales tax measure now
- D. How This Plan was Developed
- E. Vision and Goals
- F. Summary of What's in the Plan
 - 1. Table showing investments by corridor
 - 2. Table showing investments by mode
- G. Taxpayer Safeguards
 - 1. Local funds spent locally
 - 2. Audit
 - 3. CWC

II. Description of Projects and Programs

- A. Investments by mode
Each project and program will be sorted by mode, defined and mapped.
 - 1. Investments in Local Streets and Roads
 - a) Capital Projects
 - b) Programs and grants
 - 2. Investments in Public Transit
 - a) Capital Projects
 - b) Programs and grants
 - (1) Transit operations and maintenance
 - (2) Special Transportation for Seniors and Disabled
 - 3. Investments by Freeway Corridors and Goods Movement
 - a) I-80
 - b) I-580
 - c) I-680
 - d) I-880

- e) Others
- 4. Investments in Bicycle and Pedestrian Travel
 - a) Capital Projects
 - b) Programs and grants
- 5. Investments in Enhancing the Environment
 - a) Transportation and Land Use Linkages
 - b) Technology and Innovation
- 6. Freight and Economic Development
 - a) Capital Projects and grants
- 7. Summary of investments by Jurisdiction
 - a) Include a map and tables

III. Governing Board and Organizational Structure

- A. Description of Alameda CTC
 - 1. Governing Board
 - 2. CWC
 - 3. Advisory Committees
 - 4. Staff
 - a) Salaries and benefits for administrative agency employees will not exceed 1% of the revenues generated by the sales tax.
 - b) Total cost of Administration not to exceed 4.5% of annual collections
- B. Program Administration
 - 1. Annual Budget
 - 2. Annual Strategic Plan
 - 3. Audit and Program Compliance Reports
 - 4. CWC Annual Report to Public
 - 5. Bonding Authority
 - 6. Amendments/Updates to the Plan
 - 7. Environmental Review
 - 8. Title VI
 - 9. Future Expenditure Plans

IV. Implementing Guidelines

- A. See parameters
- B. See program descriptions
- C. Programming of funds
- D. Local contracting

This page intentionally left blank.

MEMORANDUM

to **Tess Lengyel, Beth Walukas and Diane Stark, Alameda CTC**

from **Carolyn Verheyen and Joan Chaplick, MIG**

re **Status Update on CWTP/TEP Community Outreach Workshop Schedule: Fall 2011**

date **9/29/2011**

This memorandum provides a status update on the community workshop venues and dates confirmed for the Alameda Countywide Transportation Plan (CWTP) and Transportation Expenditure Plan (TEP) outreach effort in Fall 2011. The dates and venues confirmed thus far are as follows:

Tuesday, October 18, 2011

6:30 – 8:30pm

District 5/North Planning Area
South Berkeley Senior Center
Multipurpose Room
2939 Ellis Street, Berkeley

Wednesday, October 19, 2011

6:30 – 8:30pm

District 3/Central Planning Area
San Leandro Senior Community Center
Main Hall
13909 East 14th Street, San Leandro

Monday, October 24, 2011

6:30 – 8:30pm

District 4/North Planning Area
East Oakland Senior Center
Multipurpose Room
9255 Edes Avenue, Oakland

Thursday, October 27, 2011

6:30 – 8:30pm

District 2/South Planning Area
Union City Sports Center
Classrooms B and C
31224 Union City Boulevard, Union City

Wednesday, November 2, 2011

6:30 – 8:30pm

District 1/East Planning Area
Dublin Civic Center Library
Community Room
200 Civic Plaza, Dublin

All spaces are booked from 5:30 – 9:00 pm, with the workshops planned for 6:30 – 8:30 pm.

A date and venue for the District 3/Central Planning Area meeting in San Leandro is yet to be confirmed.

Telephone Survey of Alameda County Voters

EMC 11-4453

n=802

FINAL September 26, 2011

Region	Quota
Central	176
East	150
North	300
South	176

QUESTIONNAIRE

Tracked questions are indicated by the designation "(T)."

Hello, my name is _____, may I speak with **(NAME ON LIST)**. **(SPEAK TO NAME ON LIST ONLY)**

Hello, my name is _____, and I'm conducting a survey for EMC Research to find out how people in your area feel about some of the different issues facing them. We are not trying to sell anything, and are collecting this information on a scientific and completely confidential basis.

QA. AGE FROM SAMPLE

1. 18-29
2. 30-39
3. 40-49
4. 50-64
5. 65+
6. BLANK

QB. SAMPLE SPLIT 1

1. A
2. B

QC. SAMPLE SPLIT 2

1. C
2. D

1. **SEX (Record from observation)**
 1. Male
 2. Female
2. Are you registered to vote in Alameda County?
 1. Yes→ CONTINUE
 2. No→ TERMINATE

3. (T) Do you think things in Alameda County are generally going in the right direction, or do you feel that things are pretty seriously off on the wrong track?
 1. Right Direction
 2. Wrong Track
 3. (Don't Know)
4. (T) What is the most important problem facing Alameda County today? **(OPEN END, 1 response, insert precode list)**
5. (T) And what would you say is the most important transportation problem facing Alameda County today? **(OPEN END, 1 response, insert precode list)**

(BEGIN SAMPLE SPLIT 1: HALF OF THE SAMPLE IN EACH REGION GETS EACH VERSION OF THE BALLOT QUESTION)

(SAMPLE A)

6. The following measure may be on the ballot next year in Alameda County:

Shall a new Alameda County Transportation Expenditure Plan be implemented to address the County's current and future transportation needs? Approval of this measure will keep all funds in Alameda County, authorizes extending the existing transportation sales tax and increasing it by 1/2 cent, with voter approval every 20 years on a new expenditure plan, with continued citizen oversight and a local jobs creation program. No money can be taken by the state.

If this measure were on the ballot today, are you likely to vote yes to approve it, or no to reject it?

(IF UNDECIDED/DON'T KNOW: Which way do you lean — toward voting "Yes" to approve, or toward voting "No" to reject?)

1. Yes, approve
2. (Lean yes)
3. No, reject
4. (Lean no)
5. (Undecided/Don't know)

(SAMPLE B)

7. The following measure may be on the ballot next year in Alameda County:

Shall a new Alameda County Transportation Expenditure Plan be implemented to address the County's current and future transportation needs? Approval of this measure will keep all funds in Alameda County, authorizes a ½ cent transportation sales tax, with voter approval every 20 years on a new expenditure plan, with citizen oversight and a local jobs creation program. No money can be taken by the state.

If this measure were on the ballot today, are you likely to vote yes to approve it, or no to reject it?

(IF UNDECIDED/DON'T KNOW: Which way do you lean — toward voting “Yes” to approve, or toward voting “No” to reject?)

1. Yes, approve
2. (Lean yes)
3. No, reject
4. (Lean no)
5. (Undecided/Don't know)

(END SAMPLE SPLIT 1: RESUME ASKING ALL)

Now I'm going to read you some of the specific elements of the ballot measure. After each please tell me if you support or oppose that particular element.

(AFTER EACH ELEMENT: Do you support or oppose this element of the ballot measure?)

(IF SUPPORT/OPPOSE: Would you say you strongly support/oppose that element, or somewhat support/oppose that element?)

SCALE:

1. Strongly support	2. Somewhat support
3. Somewhat oppose	4. Strongly oppose 5. (Don't Know)

This measure would...

(RANDOMIZE LIST)

8. Maintain and improve mass transit programs that can get people out of their cars, including supporting AC Transit services and the ACE Train, which runs from the Central Valley through the Pleasanton area and on to San Jose, extending BART to Livermore, and expanding express and feeder bus services.
9. Maintain and improve the County's aging highway system. The plan improves highway surfaces and authorizes major new projects to improve highways, interchanges, and major surface streets and roads to improve traffic flow.
10. Maintain and improve local streets and roads. This plan will provide money to every Alameda County city for repaving streets, filling potholes, and upgrading local transportation infrastructure.
11. Complete major bike and pedestrian routes and improve safety. The plan funds completion of trails along key commute corridors, including the East Bay Greenway, Iron Horse Trail, and Bay

Trail, and makes significant road and bikeway improvements to keep cyclists and pedestrians safe while minimizing traffic disruption.

12. **(SAMPLE A)** Extend the current transportation sales tax.
13. **(SAMPLE A)** Increase the transportation sales tax by ½ cent.
14. **(SAMPLE B)** Establish a new ½ cent transportation sales tax.
15. Require that the expenditure plan be revised and approved by the voters every 20 years.
16. Establish a permanent transportation sales tax for the County to guarantee long-term funding for roads, transit systems, bicycles and pedestrians, that cannot be taken by the State.
17. Ensure an independent Citizens Watchdog group audits the transportation agency and reports yearly to the public to insure the funds are spent according to the approved plan.
18. Allow the county to continue making critical road and transportation improvements. Past measures have paid for improving I-880, bringing BART to Pleasanton and Warm Springs, and easing traffic bottlenecks at key interchanges like I-580 and I-680, and Highways 24 and 13, and this measure would build upon those successes.

(END RANDOMIZE)

19. Given what you have heard, if the election on this ballot measure were held today, are you likely to vote yes to approve it, or no to reject it?
(IF UNDECIDED/DON'T KNOW: Which way do you lean — toward voting "Yes" to approve, or toward voting "No" to reject?)
 1. Yes, approve
 2. (Lean yes)
 3. No, reject
 4. (Lean no)
 5. (Undecided/Don't know)

I'm going to read you some statements about the transportation sales tax ballot measure. After each statement, please tell me if it would make you less likely or more likely to vote for this measure, where 1 means **much less likely** and 7 means **much more likely**. You may use any number on that scale. If the statement makes no difference in your support, please just say so.

SCALE:

- 1. Much **less** likely to vote for measure
- 2 - 6
- 7. Much **more** likely to vote for measure
- 8. No difference
- 9. (Don't know)

AFTER EACH QUESTION, AS NEEDED: On a scale from 1 to 7, where 1 means much less likely and 7 means much more likely, how does that statement affect your vote on the transportation sales tax measure?

(RANDOMIZE ENTIRE LIST ACROSS ALL CATEGORIES)

Streets & Roads

- 20. This measure will make the carpool lane on I-880 continuous between Oakland and Fremont;
- 21. This measure will fund installation of new technologies on I-880 to improve traffic flow;
- 22. This measure will improve Route 84 between I-580 and I-680 near Livermore and Pleasanton to relieve both local and commuter traffic;
- 23. This measure will fund improvements to major regional roads, like Ashby Avenue in Berkeley, Broadway in Oakland, Mission Boulevard in Hayward, Union City and Fremont, and Stanley Boulevard in Pleasanton;
- 24. This measure will fund major improvements along the I-80 corridor, including at the on and off ramps at Gilman, University, Ashby, and Powell Streets, that make the corridor safer and less congested;
- 25. This measure funds major improvements that will make it easier and faster to get between I-680 and I-880 in Fremont;
- 26. This measure will fund major improvements along the I-680 corridor between Dublin and Fremont to make the corridor safer and less congested;
- 27. This measure will make the carpool lane on I-680 continuous between Dublin and Fremont;
- 28. This measure will fund installation of new technologies on I-680 to improve traffic flow;
- 29. This measure will make our streets, roads, and highways safer and more efficient;
- 30. This measure funds the completion of major improvements that will help traffic flow better throughout Alameda County;

Public Transit

- 31. This measure will restore some of the essential public transit services that have been eliminated due to state budget shortfalls;
- 32. This measure will provide critical funding needed to extend BART to Livermore;
- 33. This measure will extend commuter trains and buses over the Dumbarton Bridge to improve the commute to Silicon Valley;

- 34. This measure creates a Bus Rapid Transit system that can move people more quickly into and through the Oakland and Berkeley areas from other parts of the county;
- 35. This measure will expand express and rapid bus services;
- 36. This measure makes it easier to use multiple forms of transit in a single trip by creating coordinated transit centers;
- 37. Ensure that public transit remains affordable and accessible to those who need it, including seniors, youth, and people with disabilities.
- 38. This measure will make it easier to get to work and school using public transportation;
- 39. This measure will support commuter ferry services;
- 40. This measure ensures that seniors and people with disabilities can get where they need to go on public transit;
- 41. This measure will rebuild the tracks through the BayFair BART station in San Leandro to allow BART to run trains directly from Dublin/Pleasanton towards Fremont and San Jose;
- 42. This measure will modernize our aging BART stations to improve reliability, performance, comfort, and sustainability;

(BEGIN SAMPLE SPLIT 2)

(SAMPLE C)

- 43. This measure helps kids get to school safely by providing middle and high school students in the county with a transit pass;
- 44. This measure encourages transit use by the next generation by providing middle and high school students in the county with a transit pass;
- 45. This measure improves air quality and reduces traffic around schools by providing middle and high school students in the county with a transit pass;

(END SAMPLE C)

(SAMPLE D)

- 46. This measure helps kids get to school safely by providing middle and high school students in the county with a free transit pass;
- 47. This measure encourages transit use by the next generation by providing middle and high school students in the county with a free transit pass;
- 48. This measure improves air quality and reduces traffic around schools by providing middle and high school students in the county with a free transit pass;

(END SAMPLE SPLIT 2: RESUME ASKING ALL)

Bike/Ped

- 49. This measure will complete important bicycle and pedestrian trails in the East Bay, including commute corridors like the Bay Trail, Iron Horse Trail, and the East Bay Greenway;
- 50. This measure will make our streets and roads safer for pedestrians and bicyclists, including the county's 340,000 school-age children;

Goods Movement

51. This measure will make it safer and easier for trucks to get to and from the Port of Oakland without creating backups and traffic congestion;
52. This measure will reduce the pollution and traffic congestion caused by the trucks that carry goods on our streets and roads;

Air Quality/Emissions Reduction

53. This measure will improve air quality by reducing traffic congestion, promoting bicycling, walking, and public transit use, and reducing truck traffic on our roads and highways;

Economic Benefit

54. With the Federal Government in Washington unable to act and severe cuts from Sacramento, this measure will stimulate the local economy and create thousands of jobs right here in Alameda County;
55. This measure will fund multi-use development projects that include housing, restaurant, retail, and businesses, with convenient access to existing and new transportation systems and options;
56. The expenditure plan for this measure invests in every part of Alameda County, and is the result of years of outreach, collaboration, and public involvement;

(END RANDOMIZE)

(BEGIN SAMPLE SPLIT 1)

(SAMPLE A)

57. Now I'd like to read you the measure again:

Shall a new Alameda County Transportation Expenditure Plan be implemented to address the County's current and future transportation needs? Approval of this measure will keep all funds in Alameda County, authorizes extending the existing transportation sales tax and increasing it by 1/2 cent, with voter approval every 20 years on a new expenditure plan, with continued citizen oversight and a local jobs creation program. No money can be taken by the state.

Given all you have just heard, if this measure were on the ballot today, are you likely to vote yes to approve it, or no to reject it?

(IF UNDECIDED/DON'T KNOW: Which way do you lean — toward voting "Yes" to approve, or toward voting "No" to reject?)

1. Yes, approve
2. (Lean yes)
3. No, reject
4. (Lean no)
5. (Undecided/Don't know)

58. And what if the measure was for $\frac{1}{4}$ cent, instead of $\frac{1}{2}$ cent? If this measure were on the ballot today for $\frac{1}{4}$ cent, are you likely to vote yes to approve it, or no to reject it?

(IF UNDECIDED/DON'T KNOW: Which way do you lean — toward voting "Yes" to approve, or toward voting "No" to reject?)

1. Yes, approve
2. (Lean yes)
3. No, reject
4. (Lean no)
5. (Undecided/Don't know)

(SAMPLE B)

59. Now I'd like to read you the measure again:

Shall a new Alameda County Transportation Expenditure Plan be implemented to address the County's current and future transportation needs? Approval of this measure will keep all funds in Alameda County, authorizes a $\frac{1}{2}$ cent transportation sales tax, with voter approval every 20 years on a new expenditure plan, with citizen oversight and a local jobs creation program. No money can be taken by the state.

Given all you have just heard, if this measure were on the ballot today, are you likely to vote yes to approve it, or no to reject it?

(IF UNDECIDED/DON'T KNOW: Which way do you lean — toward voting "Yes" to approve, or toward voting "No" to reject?)

1. Yes, approve
2. (Lean yes)
3. No, reject
4. (Lean no)
5. (Undecided/Don't know)

60. And what if the measure was for $\frac{1}{4}$ cent, instead of $\frac{1}{2}$ cent? If this measure were on the ballot today for $\frac{1}{4}$ cent, are you likely to vote yes to approve it, or no to reject it?

(IF UNDECIDED/DON'T KNOW: Which way do you lean — toward voting "Yes" to approve, or toward voting "No" to reject?)

1. Yes, approve
2. (Lean yes)
3. No, reject
4. (Lean no)
5. (Undecided/Don't know)

(END SAMPLE SPLIT 2: RESUME ASKING ALL)

61. Some people say now is not the time to raise our taxes, but that we should try to secure long-term local funding for transportation, since the State and Federal Governments are not reliable sources of transportation money. If Alameda County proposed only extending the current ½ cent transportation sales tax with no increase to provide long-term funding for a basic set of transportation projects and programs, would you be likely to vote yes to approve it, or no to reject it?

(IF UNDECIDED/DON'T KNOW: Which way do you lean — toward voting “Yes” to approve, or toward voting “No” to reject?)

1. Yes, approve
2. (Lean yes)
3. No, reject
4. (Lean no)
5. (Undecided/Don't know)

Now I'd like to ask you a few questions for statistical purposes only.

62. In terms of your job status, are you employed, unemployed but looking for work, retired, a student, or a homemaker?
1. Employed
 2. Unemployed
 3. Retired
 4. Student
 5. Homemaker
 6. (Other)
 7. (Don't know)
63. Do you rent or own your home or apartment?
1. Rent/other
 2. Own/buying
 3. (Don't know/Refused)
64. Thinking about a political scale where 1 is very liberal and 7 is very conservative, where would you place yourself on that scale? **(Code 1-7, 8=Don't know)**
65. What is the last grade you completed in school?
1. Some grade school
 2. Some high school
 3. Graduated high school
 4. Technical/Vocational
 5. Some college
 6. Graduated college [including Bachelors, BA]
 7. Graduate/Professional [including Masters, PhD, etc]
 8. (Don't know/Refused)

66. Would you consider yourself to be Hispanic or Latino, Black or African American, White, Asian or Pacific Islander, or something else?
1. Hispanic/Latino
 2. Black/African-American
 3. White
 4. Asian or Pacific Islander
 5. (Bi-racial/ Multi-racial)
 6. Something else/ other
 7. (Refused)
67. In what year were you born? **(Do not read categories, code as appropriate)**
1. 1936 or earlier (75+)
 2. 1937-1941 (70-74)
 3. 1942-1946 (65-69)
 4. 1947-1951 (60-64)
 5. 1952-1956 (55-59)
 6. 1957-1961 (50-54)
 7. 1962-1966 (45-49)
 8. 1967-1971 (40-44)
 9. 1972-1976 (35-39)
 10. 1977-1981 (30-34)
 11. 1982-1986 (25-29)
 12. 1987-1993 (18-24)
 13. (Refused)

THANK YOU!

PARTY REGISTRATION FROM SAMPLE

Democrat
Republican
Other
DTS

CITY CODE FROM SAMPLE

Alameda
Albany
Berkeley
Dublin
Emeryville
Fremont
Hayward
Livermore
Newark
Oakland
Piedmont
Pleasanton

San Leandro
Union City
Other/Unincorporated

ZIP CODE FROM SAMPLE

CITY FROM SAMPLE

SUPERVISOR DISTRICT FROM SAMPLE

1. 1
2. 2
3. 3
4. 4
5. 5

This page intentionally left blank.



Memorandum

DATE: September 29, 2011

TO: CWTP-TEP Community Advisory Working Group

FROM: Beth Walukas, Deputy Director of Planning
Tess Lengyel, Deputy Director of Policy, Public Affairs and Legislation

SUBJECT: **Review of First Draft Countywide Transportation Plan (CWTP) and Discussion of Transportation Expenditure Plan and Update on Development of Sustainable Community Strategy (SCS)/Regional Transportation Plan (RTP)**

Recommendation

This item is for information only. No action is requested.

Summary

This item provides information on regional and countywide transportation planning efforts related to the updates of the Countywide Transportation Plan and Sales Tax Transportation Expenditure Plan (CWTP-TEP) as well as the Regional Transportation Plan (RTP) and the development of the Sustainable Community Strategy (SCS). In September, the administrative draft CWTP was released by the CWTP-TEP Steering Committee for evaluation and comment. The administrative draft report can be found on the Alameda CTC website at: http://www.alamedactc.org/app_pages/view/3070.

The CWTP-TEP Steering Committee also approved TEP parameters. These and the administrative draft CWTP will be the basis from which a first draft of the TEP project list will be developed in October and November 2011. Both the CWTP and TEP will be modified based on comments received with the goal of presenting a draft of both Plans to the Commission at its retreat on December 16, 2011.

Discussion

Ten separate committees receive monthly updates on the progress of the CWTP-TEP and RTP/SCS, including ACTAC, the Planning, Policy and Legislation Committee (PPLC), the Alameda CTC Board, the CWTP-TEP Steering Committee, the Citizen's Watchdog Committee, the Paratransit Advisory and Planning Committee, the Citizen's Advisory Committee, and the Bicycle and Pedestrian Advisory Committee, and the Technical and Community Advisory Working Groups. The purpose of this report is to keep various Committee and Working Groups updated on regional and countywide planning activities, alert Committee members about issues and opportunities requiring input in the near term, and provide an opportunity for Committee feedback in a timely manner. CWTP-TEP Committee agendas and related documents are available on the Alameda CTC website. RTP/SCS related documents are available at www.onebayarea.org.

October 2011 Update:

This report focuses on the month of October 2011. A summary of countywide and regional planning activities for the next three months is found in Attachment A and a three year schedule for the countywide and the regional processes is found in Attachments B and C, respectively. Note that the regional schedule is being updated. Attachment A reflects the proposed revisions to the schedule while Attachment C does not. MTC will provide a revised Attachment C once the revised schedule is approved by the Commission. Highlights include continued work on the One Bay Area Alternative Land Use Scenarios and the development of the two transportation networks to support those scenarios by ABAG and MTC and the release of the administrative draft of the Alameda Countywide Transportation Plan, approval of TEP projects and program packaging parameters, and announcement of the fall 2011 outreach process.

1) MTC/ABAG: Development of Alternative Land Use and Transportation Scenarios

On August 26, 2011, ABAG released the One Bay Area SCS Alternative Land Use Scenarios, including three constrained scenarios: Core Concentration, Focused Growth, and Outer Bay Area Growth. These scenarios will be used to inform the development of the Preferred SCS. Two of the scenarios are based on unconstrained growth, assume very strong employment growth, and unconstrained funding to support housing affordability. The Alternative Land Use Scenario Report, revised September 1, 2011, presents the land use patterns for three scenarios: Core Concentration, Focused Growth, and Outer Bay Area Growth and assesses them based on economic growth, financial feasibility and reasonable planning strategies.

Concurrently, MTC has been working with the stakeholders to develop two transportation networks: Transportation 2035 and Core Capacity Transit networks. MTC staff will begin its scenario analysis and project performance assessment in September with results anticipated to be released in November and December.

2) CWTP-TEP

In September the CWTP-TEP Steering Committee, with input from CAWG and TAWG, released the administrative draft of the Countywide Transportation Plan for evaluation and comment and approved TEP parameters. Presentations will be made by staff at the October meetings to the advisory committee meetings about the CWTP and TEP. The administrative draft CWTP is found on the Alameda CTC website at http://www.alamedactc.org/app_pages/view/3070. A draft list of Transportation Expenditure Plan projects and programs will be developed in October and November based on the administrative draft CWTP and the TEP parameters. Public outreach on the CWTP and TEP will occur in October and November as presented below. More details about meeting locations and agendas can be found on the Alameda CTC website. Additionally, Supervisor Carson will be hosting an SCS Summit on October 12th.

3) Upcoming Meetings Related to Countywide and Regional Planning Efforts:

Committee	Regular Meeting Date and Time	Next Meeting
CWTP-TEP Steering Committee	Typically the 4 th Thursday of the month, noon Location: TBD	October 27, 2011 November 17, 2011 December 1, 2011
CWTP-TEP Technical Advisory	2 nd Thursday of the month, 1:30 p.m.	October 13, 2011

Committee	Regular Meeting Date and Time	Next Meeting
Working Group	Location: Alameda CTC	November 10, 2011
CWTP-TEP Community Advisory Working Group	Typically the 1 st Thursday of the month, 2:30 p.m. Location: Alameda CTC	October 6, 2011 November 3, 2011
Joint Steering Committee and Community Advisory Working Group	Noon Location: Alameda CTC offices	October 7, 2011
SCS/RTP Regional Advisory Working Group	1 st Tuesday of the month, 9:30 a.m. Location: MetroCenter, Oakland	October 4, 2011 November 1, 2011
SCS/RTP Equity Working Group	2 nd Wednesday of the month, 11:15 a.m. Location: MetroCenter, Oakland	October 12, 2011 November 9, 2011
SCS Housing Methodology Committee	10 a.m. Location: BCDC, 50 California St., 26 th Floor, San Francisco	October 27, 2011
Northern Alameda County SCS Summit Hosted by Supervisor Keith Carson	1 p.m. Location: Alameda County Administrative Offices, 1221 Oak Street, 5 th Floor, Oakland	October 12, 2011
5 CWTP-TEP Public Outreach Meetings District 5/North Planning Area District 4/North Planning Area District 3/Central Planning Area District 2/South Planning Area District 1/East Planning Area	Time and Location 6:30 p.m., So. Berkeley Senior Center 6:30 p.m., East Oakland Senior Center 6:30 p.m., San Leandro Senior Center 6:30 p.m., Union City Sports Center 6:30 p.m., Dublin Civic Center Library	Date October 18, 2011 October 24, 2011 October 19, 2011 October 27, 2011 November 2, 2011
North County Transportation Forum	6:30 p.m. Alameda CTC offices	October 20, 2011

Fiscal Impact

None.

Attachments

Attachment A: Summary of Next Quarter Countywide and Regional Planning Activities
Attachment B: CWTP-TEP-RTP-SCS Development Implementation Schedule
Attachment C: OneBayArea SCS Planning Process

This page intentionally left blank.

**Summary of Next Quarter Countywide and Regional Planning Activities
(October 2011 through January 2012)**

Countywide Planning Efforts (CWTP-TEP)

The three year CWTP-TEP schedule showing countywide and regional planning milestone schedules is found in Attachment B. Major milestone dates are presented at the end of this memo. During the October 2011 through January 2012 time period, the CWTP-TEP Committees will be focusing on:

- Coordinating with ABAG and local jurisdictions to provide comments on the Alternative Land Use Scenarios for the Sustainable Communities Strategy (SCS);
- Coordinating with the local jurisdictions to develop a draft Alameda County Locally Preferred SCS to test with the financially constrained transportation network in October;
- Responding to comments on the Administrative Draft CWTP;
- Refining the financially constrained list of projects and programs for the Draft CWTP;
- Developing the second draft CWTP;
- Refining the countywide 25-year revenue projections consistent and concurrent with MTC's 25-year revenue projections;
- Developing first draft Transportation Expenditure Plan (TEP) list of projects and programs;
- Conducting public outreach and a second poll; and
- Presenting the Draft CWTP and Draft TEP to the Steering Committee and Commission for approval.

Regional Planning Efforts (RTP-SCS)

Staff continues to coordinate the CWTP-TEP with planning efforts at the regional level including the Regional Transportation Plan (MTC), the Sustainable Communities Strategy (ABAG), Climate Change Bay Plan and amendments (San Francisco Bay Conservation and Development Commission (BCDC)) and CEQA Guidelines (Bay Area Air Quality Management District (BAAQMD)).

In the three month period for which this report covers, MTC and ABAG are focusing on

- Conducting a scenario analysis of five land use options and two transportation network (Alameda CTC staff is providing input into both of these activities);
- Releasing the results of the scenario analysis and project performance assessment;
- Refining draft 25-year revenue projections;
- Finalizing maintenance needs and Regional Programs estimates; and
- Adopting a RHNA Methodology.

Staff will be coordinating with the regional agencies and providing feedback on these issues, through:

- Participating on the MTC/ABAG Regional Advisory Working Group (RAWG),
- Participating on regional Sub-committees (Equity sub-committee);
- Developing a written response to the Alternative Land Use Scenarios;
- Developing local transportation network priorities through the CWTP-TEP process; and
- Assisting in public outreach.

Key Dates and Opportunities for Input¹

The key dates shown below are indications of where input and comment are desired. The major activities and dates are highlighted below by activity:

Sustainable Communities Strategy:

Presentation of SCS information to local jurisdictions: Completed

Initial Vision Scenario Released: March 11, 2011: Completed

Draft Alternative Land Use Scenarios Released: Completed (released August 26, 2011)

Preferred SCS Scenario Released/Approved: March/May 2012

RHNA

RHNA Process Begins: January 2011

Draft RHNA Methodology Released: December 2011

Draft RHNA Plan released: February 2012

Final RHNA Plan released/Adopted: July 2012/October 2012

RTP

Develop Financial Forecasts and Committed Funding Policy: Completed

Call for RTP Transportation Projects: Completed

Conduct Performance Assessment: May 2011 - November 2011

Transportation Policy Investment Dialogue: November 2011 – April 2012

Prepare SCS/RTP Plan: April 2012 – October 2012

Draft RTP/SCS for Released: November 2012

Prepare EIR: December 2012 – March 2013

Adopt SCS/RTP: April 2013

CWTP-TEP

Develop Alameda County Locally Preferred SCS Scenario: May 2011 – May 2012

Call for Projects: Completed

Administrative Draft CWTP: Completed

Preliminary TEP Program and Project list: October 2011

Draft CWTP and TEP Released: December 2011

Plans Outreach: January 2011 – June 2012

Adopt Final CWTP and TEP: May 2012

TEP Submitted for Ballot: July 2012

¹ Note that the regional schedule is being updated. Attachment A reflects the proposed revisions to the schedule while Attachment C does not. MTC will provide a revised Attachment C once the revised schedule is approved by the Commission.

Task	2010						Meeting FY2010-2011	2010				
	January	February	March	April	May	June	July	August	Sept	Oct	Nov	Dec
Alameda CTC Committee/Public Process												
Steering Committee			Establish Steering Committee	Working meeting to establish roles/ responsibilities, community working group	RFP feedback, tech working group	Update on Transportation/ Finance Issues	Approval of Community working group and steering committee next steps	No Meetings		Feedback from Tech, comm working groups	No Meetings	Expand vision and goals for County ?
Technical Advisory Working Group								No Meetings		Roles, resp, schedule, vision discussion/ feedback	No Meetings	Education: Trans statistics, issues, financials overview
Community Advisory Working Group								No Meetings		Roles, resp, schedule, vision discussion/ feedback	No Meetings	Education: Transportation statistics, issues, financials overview
Public Participation								No Meetings			Stakeholder outreach	
Agency Public Education and Outreach	Information about upcoming CWTP Update and reauthorization											
Alameda CTC Technical Work												
Technical Studies/RFP/Work timelines: All this work will be done in relation to SCS work at the regional level						Board authorization for release of RFPs	Pre-Bid meetings	Proposals reviewed	ALF/ALC approves shortlist and interview; Board approves top ranked, auth. to negotiate or NTP	Technical Work		
Polling												
Sustainable Communities Strategy/Regional Transportation Plan												
Regional Sustainable Community Strategy Development Process - Final RTP in April 2013			Local Land Use Update P2009 begins & PDA Assessment begins						Green House Gas Target approved by CARB.	Start Vision Scenario Discussions		
											Adopt methodology for Jobs/Housing Forecast (Statutory Target)	Projections 2011 Base Case
												Adopt Voluntary Performance Targets

		2011					FY2011-2012	2011				
Task	January	February	March	April	May	June	July	August	Sept	Oct	Nov	Dec
Alameda CTC Committee/Public Process												
Steering Committee	Adopt vision and goals; begin discussion on performance measures, key needs	Performance measures, costs guidelines, call for projects and prioritization process, approve polling questions, initial vision scenario discussion	Review workshop outcomes, transportation issue papers, programs, finalize performance measures, land use discussion, call for projects update	Outreach and call for projects update (draft list approval), project and program packaging, county land use	Outreach update, project and program screening outcomes, call for projects final list to MTC, TEP strategic parameters, land use, financials, committed projects	No Meetings.	Project evaluation outcomes; outline of CWTP; TEP Strategies for project and program selection	No Meetings	1st Draft CWTP, TEP potential project and program packages, outreach and polling discussion		Meeting moved to December due to holiday conflict	Review 2nd draft CWTP; 1st draft TEP
Technical Advisory Working Group	Comment on vision and goals; begin discussion on performance measures, key needs	Continue discussion on performance measures, costs guidelines, call for projects, briefing book, outreach	Review workshop outcomes, transportation issue papers, programs, finalize performance measures, land use discussion, call for projects update	Outreach and call for projects update, project and program packaging, county land use	Outreach update, project and program screening outcomes, call for projects update, TEP strategic parameters, land use, financials, committed projects	No Meetings.	Project evaluation outcomes; outline of CWTP; TEP Strategies for project and program selection	No Meetings	1st Draft CWTP, TEP potential project and program packages, outreach and polling discussion		Review 2nd draft CWTP, 1st draft TEP, poll results update	No Meetings
Community Advisory Working Group	Comment on vision and goals; begin discussion on performance measures, key needs	Continue discussion on performance measures, costs guidelines, call for projects, briefing book, outreach	Review workshop outcomes, transportation issue papers, programs, finalize performance measures, land use discussion, call for projects update	Outreach and call for projects update, project and program packaging, county land use	Outreach update, project and program screening outcomes, call for projects update, TEP strategic parameters, land use, financials, committed projects	No Meetings.	Project evaluation outcomes; outline of CWTP; TEP Strategies for project and program selection	No Meetings	1st Draft CWTP, TEP potential project and program packages, outreach and polling discussion		Review 2nd draft CWTP, 1st draft TEP, poll results update	No Meetings
Public Participation	Public Workshops in two areas of County: vision and needs; Central County Transportation Forum	Public Workshops in all areas of County: vision and needs		East County Transportation Forum			South County Transportation Forum	No Meetings		2nd round of public workshops in County: feedback on CWTP,TEP; North County Transportation Forum		No Meetings
Agency Public Education and Outreach		Ongoing Education and Outreach through November 2012					Ongoing Education and Outreach through November 2012					
Alameda CTC Technical Work												
Technical Studies/RFP/Work timelines: All this work will be done in relation to SCS work at the regional level	Feedback on Technical Work, Modified Vision, Preliminary projects lists					Work with feedback on CWTP and financial scenarios	Technical work refinement and development of Expenditure plan, 2nd draft CWTP					
Polling	Conduct baseline poll									Polling on possible Expenditure Plan projects & programs	Polling on possible Expenditure Plan projects & programs	
Sustainable Communities Strategy/Regional Transportation Plan												
Regional Sustainable Community Strategy Development Process - Final RTP in April 2013			Release Initial Vision Scenario	Detailed SCS Scenario Development			Release Detailed SCS Scenarios	Technical Analysis of SCS Scenarios; Adoption of Regional Housing Needs Allocation Methodology		SCS Scenario Results/and funding discussions		Release Preferred SCS Scenario
	Discuss Call for Projects		Call for Transportation Projects and Project Performance Assessment		Project Evaluation		Draft Regional Housing Needs Allocation Methodoligy					
	Develop Draft 25-year Transportation Financial Forecasts and Committed Transportation Funding Policy											

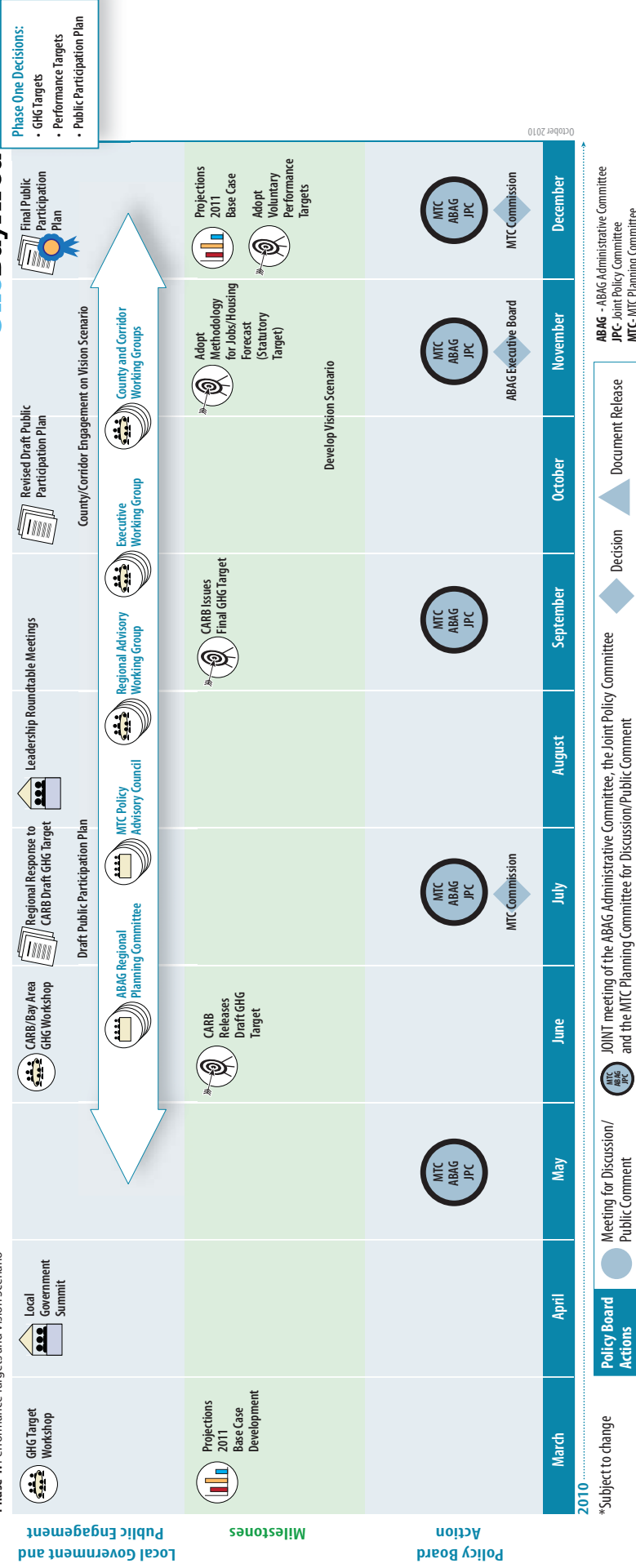
		2012					FY2011-2012				
Task	January	February	March	April	May	June	July	August	Sept	Oct	November
Alameda CTC Committee/Public Process											
Steering Committee	Full Draft TEP, Outcomes of outreach meetings	Finalize Plans	Meetings to be determined as needed		Adopt Draft Plans	Adopt Final Plans	Expenditure Plan on Ballot				VOTE: November 6, 2012
Technical Advisory Working Group	Full Draft TEP, Outcomes of outreach meetings	Finalize Plans	Meetings to be determined as needed								VOTE: November 6, 2012
Community Advisory Working Group	Full Draft TEP, Outcomes of outreach meetings	Finalize Plans	Meetings to be determined as needed								VOTE: November 6, 2012
Public Participation			Expenditure Plan City Council/BOS Adoption								VOTE: November 6, 2012
Agency Public Education and Outreach	Ongoing Education and Outreach Through November 2012 on this process and final plans						Ongoing Education and Outreach through November 2012 on this process and final plans				
Alameda CTC Technical Work											
Technical Studies/RFP/Work timelines: All this work will be done in relation to SCS work at the regional level	Finalize Plans										
Polling					Potential Go/No Go Poll for Expenditure Plan						
Sustainable Communities Strategy/Regional Transportation Plan											
Regional Sustainable Community Strategy Development Process - Final RTP in April 2013	Approval of Preferred SCS, Release of Regional Housing Needs Allocation Plan		Begin RTP Technical Analysis & Document Preparation	Prepare SCS/RTP Plan						Release Draft SCS/RTP for review	

This page is intentionally left blank.

Sustainable Communities Strategy Planning Process: Phase 1 Detail for 2010*

Phase 1: Performance Targets and Vision Scenario

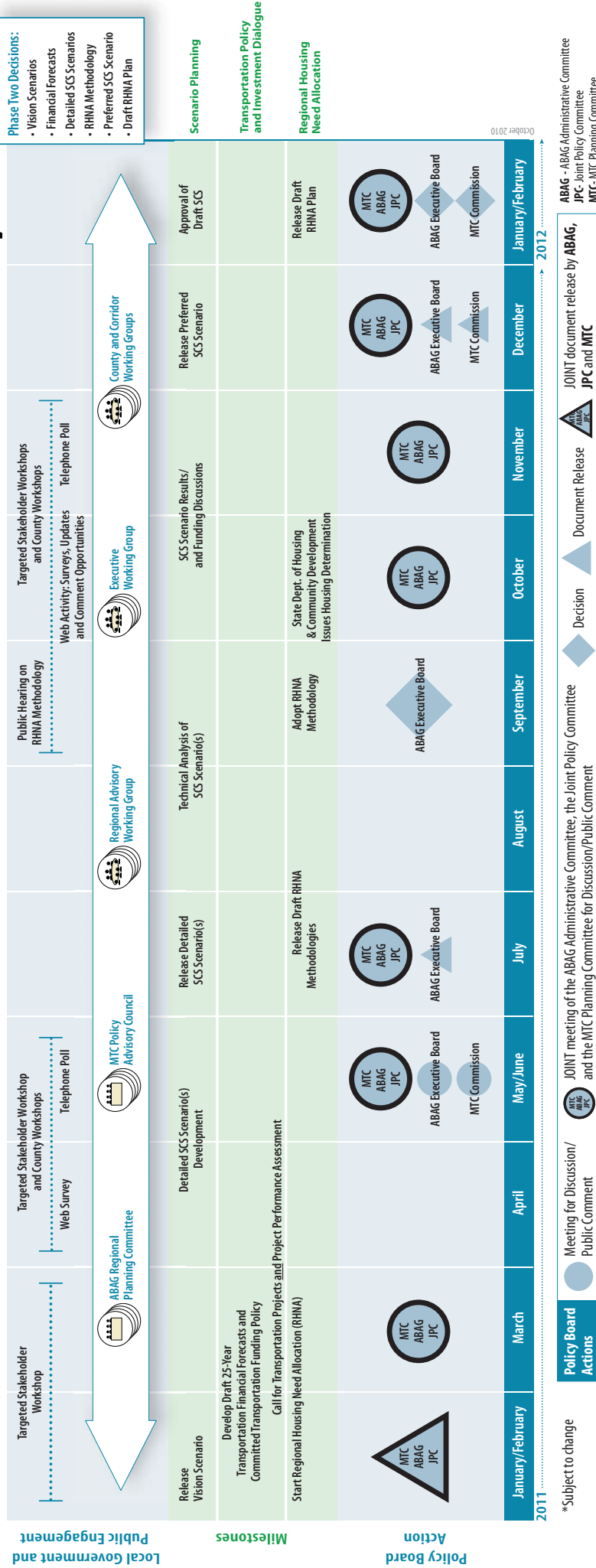
OneBayArea



Sustainable Communities Strategy Planning Process: Phase 2 Detail for 2011*

Phase 2: Scenario Planning, Transportation Policy & Investment Dialogue, and Regional Housing Need Allocation

OneBayArea

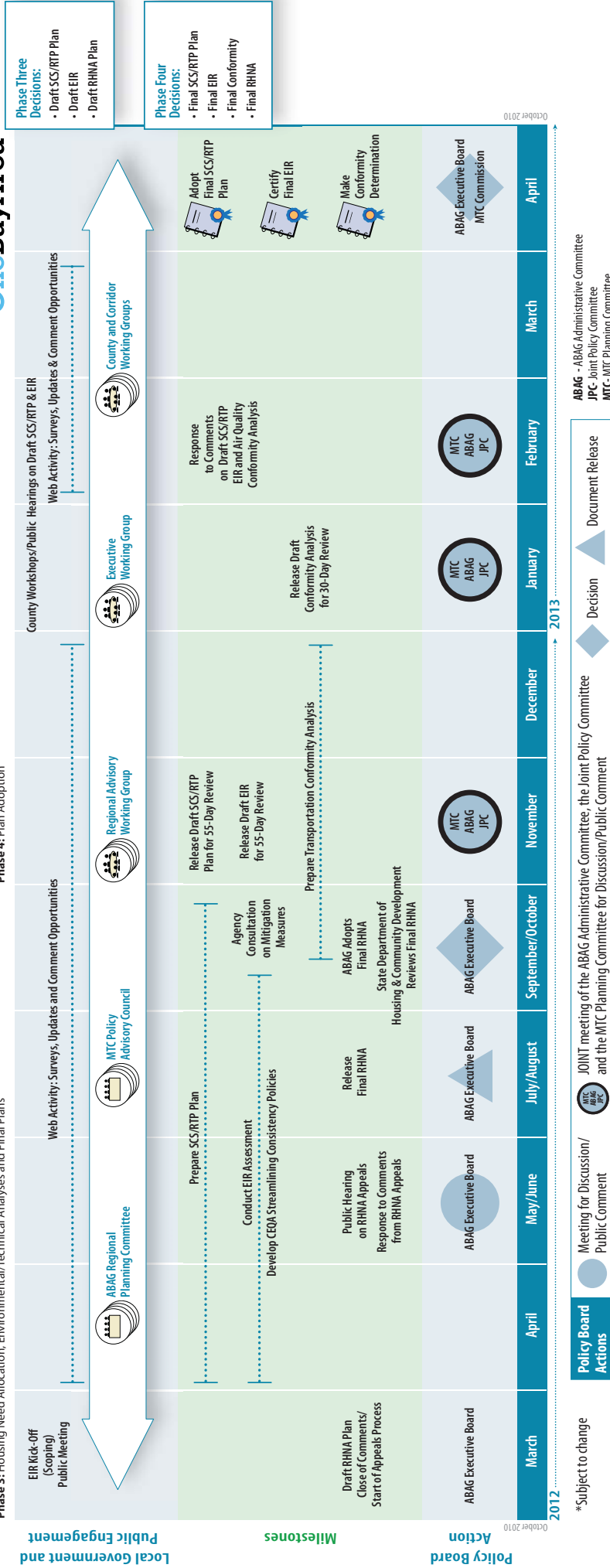


Sustainable Communities Strategy Planning Process: Phases 3 & 4 Details for 2012-2013*

Phase 3: Housing Need Allocation, Environmental/Technical Analyses and Final Plans

Phase 4: Plan Adoption

OneBayArea



This page intentionally left blank.

Upcoming Advisory and Steering Committee Meetings Schedule

ALL MEETINGS at Alameda CTC, 1333 Broadway, Suite 300, Oakland, CA

	Meeting Date/Function	Outcomes	Agenda Items
1	<p>CAWG February 3, 2011 2:30 p.m. – 5 p.m.</p> <p>TAWG February 10, 2011 1:30 – 4 p.m.</p> <p>Steering Committee February 24, 2011 12 – 2 p.m.</p>	<ul style="list-style-type: none"> Receive an update on Regional and Countywide Transportation Plan and Transportation Expenditure Plan (CWTP-TEP) activities and processes Receive overview and schedule of Initial Vision Scenario Review the Metropolitan Transportation Commission (MTC) draft policy on committed funding and projects and call for projects Receive an outreach status update and approve the polling questions Discuss performance measures 	<ul style="list-style-type: none"> Update on CWTP-TEP Activities Since Last Meeting Update on Countywide and Regional Processes Discuss the initial vision scenario and approach for incorporating SCS in the CWTP Review and comment on MTC's Draft Policy on Committed Funding and Projects, Approve Alameda CTC Call for Projects process and approve prioritization policy Outreach status update and <i>Steering Committee approval of polling questions</i> Continued discussion and refinement of Performance Measures Update: Steering Committee, CAWG, TAWG, and Other Items/Next Steps
2	<p>CAWG March 3, 2011 2:30 p.m. – 5 p.m.</p> <p>TAWG March 10, 2011 1:30 – 4 p.m.</p> <p>Special TAWG March 18, 2011 11:30 a.m. to 1:30 p.m.</p> <p>Steering Committee March 24, 2011 11 a.m. – 1 p.m.</p>	<ul style="list-style-type: none"> Receive an update on outreach Adopt Final Performance Measures Initiate discussion of programs Receive update on MTC Call for Projects and Alameda County approach Comment on transportation issue papers subjects Provide input to land use and modeling and Initial Vision Scenario (TAWG) Update on Initial Vision Scenario and Priority Conservation Areas (TAWG) Receive update and finalize Briefing Book Discuss committed funding policy 	<ul style="list-style-type: none"> Update on Outreach: Workshop, Polling Update, Web Survey <i>Approve Final Performance Measures & link to RTP</i> Discussion of Programs Overview of MTC Call for Projects and Alameda County Process Discussion of Transportation Issue Papers & Best Practices Presentation Discussion of Land use scenarios and modeling processes (TAWG) Update on regional processes: Initial Vision Scenario and Priority Conservation Areas (ABAG to present at TAWG) Finalize Briefing Book TAWG/CAWG/SC update
3	<p>CAWG April 7, 2011 2:30 p.m. – 5 p.m.</p>	<ul style="list-style-type: none"> Receive update on outreach activities Provide feedback on policy for projects and programs packaging Provide comments on Alameda County land use scenarios 	<ul style="list-style-type: none"> Update on Workshop, Poll Results Presentation, Web Survey Discuss Packaging of Projects and Program for CWTP Discussion of Alameda County land use scenarios

	Meeting Date/Function	Outcomes	Agenda Items
	<p>TAWG April 14, 2011 1:30 – 4 p.m.</p> <p>Steering Committee April 28, 2011 12 – 2 p.m.</p>	<ul style="list-style-type: none"> • Receive update on Call for Projects outcomes • Comment on refined Transportation Issue Papers • Comment on committed projects and funding policy and Initial Vision Scenario 	<ul style="list-style-type: none"> • Discuss Call for Projects results: <i>Draft project list to be approved by SC to send to MTC</i> • Transportation Issue Papers & Best Practices Presentation • Update on regional process: discussion of policy on committed projects, refinement of Initial Vision Scenario • TAWG/CAWG/SC update
4	<p>CAWG May 5, 2011 2:30 p.m. – 5 p.m.</p> <p>TAWG May 12, 2011 1:30 – 4 p.m.</p> <p>Steering Committee May 26, 2011 12 – 2 p.m.</p>	<ul style="list-style-type: none"> • Review outcomes of initial workshops and other outreach • Review outcomes of call for projects, initial screening and next steps • Discuss TEP Strategic Parameters & alternative funding scenarios • Recommend land use scenario for CWTP and provide additional comments on Initial Vision Scenario • Receive information on Financial projections and opportunities • Title VI update and it's relation to final plans to CAWG & TAWG meetings 	<ul style="list-style-type: none"> • Summary of workshop results in relation to poll results • Outcomes of project call and project screening- Present screened list of projects and programs. <i>Steering Committee recommends final project and program list to full Alameda CTC commission to approve and submit to MTC after public hearing on same day.</i> • Discussion of Financials for CWTP and TEP and TEP Strategic Parameters - duration, potential funding amounts, selection process • Update on regional processes: Focus on Financial Projections, Initial Vision Scenario: <i>Steering Committee recommendation to ABAG on land use (for both a refined IVS and other potential aggressive options)</i> • Title VI update • TAWG/CAWG/SC update
	No June Meeting		
5	<p>CAWG July 7, 2011 12:00 – 5 p.m.</p> <p>TAWG July 14, 2011 1:30 – 4 p.m.</p> <p>CAWG/TAWG Joint July 21, 2011 1 – 3:30 p.m.</p> <p>Steering Committee July 28, 2011 12 – 2 p.m.</p>	<ul style="list-style-type: none"> • Project Evaluation 101 (CAWG only; 12 -1 p.m.) • Provide comments on outcomes of project evaluation • Comment on outline of Countywide Transportation Plan. • Continue discussion of TEP parameters and financials • Provide feedback on proposed outreach approach for fall 2011 	<ul style="list-style-type: none"> • Results of Project and Program Packaging and Evaluation • Review CWTP Outline • Discussion of TEP strategic parameters and financials • Discussion of fall 2011 outreach approach • Update on regional processes • TAWG/CAWG/SC update

	Meeting Date/Function	Outcomes	Agenda Items
6	<p>CAWG September 15, 2011 1 – 5 p.m.</p> <p>TAWG September 8, 2011 1:30 – 4 p.m.</p> <p>Steering Committee September 22, 2011 12 – 2 p.m.</p>	<ul style="list-style-type: none"> • Comment on first draft of Countywide Transportation Plan • Comment on potential packages of projects and programs for TEP • Prepare for second round of public meetings and second poll 	<ul style="list-style-type: none"> • Presentation/Discussion of Countywide Plan Draft • Presentation/Discussion of TEP candidate projects • Refine the process for further evaluation of TEP projects • Discussion of upcoming outreach and polling questions • Update on regional processes • TAWG/CAWG/SC update
7	<p>CAWG October 6, 2011 2:30 – 4:30 p.m.</p> <p>Joint Steering Committee/CAWG October 7, 2011 Noon to 2 p.m.</p> <p>TAWG October 13, 2011 1:30 to 3:30</p> <p>Steering Committee October 27, 2011 Noon to 3 p.m.</p>	<ul style="list-style-type: none"> • Comment on first draft of Countywide Transportation Plan, including project and program financially constrained list • Comment on preliminary Transportation Expenditure Plan candidate projects and programs • Receive update on second round of public meetings and second poll 	<ul style="list-style-type: none"> • Further refine Countywide Transportation Plan financially constrained list • Discussion of Transportation Expenditure Plan preliminary projects and programs lists • Update on public outreach and poll • Update on region processes • TAWG/CAWG/SC Update
8	<p>CAWG November 3, 2011 2:30 p.m. – 5 p.m.</p> <p>TAWG November 10, 2011 1:30 – 4 p.m.</p> <p>Steering Committee November 17, 2011 12 – 3 p.m.</p>	<ul style="list-style-type: none"> • Comment on second draft of Countywide Transportation Plan • Review and provide input on first draft of Transportation Expenditure Plan Projects and Programs • Review results of second poll and outreach update 	<ul style="list-style-type: none"> • Presentation/Discussion of Countywide Plan second draft • Presentation/Discussion of TEP Projects and Programs (first draft of the TEP) • Presentation on second poll results and outreach update • Update on regional processes • TAWG/CAWG/SC update
9	Steering Committee December 1, 2011 12 – 2 p.m.	<ul style="list-style-type: none"> • Review and comment on TEP 	<ul style="list-style-type: none"> • Review and comment on TEP
10	CAWG January 5, 2012 2:30 p.m. – 5 p.m.	<ul style="list-style-type: none"> • Discussion (as needed) on CWTP and TEP • Review final outcomes of outreach meetings 	<ul style="list-style-type: none"> • Presentation/Discussion of updates on CWTP and TEP • Presentation of Outreach Findings and next steps • Update on regional processes

	Meeting Date/Function	Outcomes	Agenda Items
	TAWG January 12, 2012 1:30 – 4 p.m. Steering Committee January 26, 2012 12 – 2 p.m.		<ul style="list-style-type: none"> • TAWG/CAWG/SC update

Future Meeting Dates:

Additional meetings are anticipated in March, May and June 2012 to refine both the CWTP and TEP.

TAWG will continue to meet as needed through final adoption of MTC and ABAG's RTP/SCS anticipated for April 2013

Definitions

CWTP: Countywide Transportation Plan, TEP: Transportation Expenditure Plan

Alameda County Transportation Commission Community Advisory Working Group

Category	Organization	Planning Area	Title	First Name	Last Name
1 Business	California Alliance for Jobs.	CW	Mr.	Joseph R.	Cruz
2 Business	Economic Development Committee (Oakland)	North	Ms.	Charissa M.	Frank
3 CWC Organization	Alameda County Taxpayer's Association	CW	Mr.	Arthur B.	Geen
Civil Rights/Env./Social Justice/Faith-based Adv.	Transportation Justice Working Group	CW	Ms.	Chaka-Khan	Gordon
5 CWC Organization	League of Women Voters	CW	Mr.	Earl	Hamlin
6 Education	Alameda County Office of Education	CW	Ms.	Unique S.	Holland
Civil Rights/Env./Social Justice/Faith-based Adv.	Urban Habitat	CW	Ms.	Lindsay S.	Imai Hong
Alameda CTC Community Advisory Committee	Alameda CTC CAC	CW	Dr.	Roop	Jindal
9 Education	Oakland Unified School District, Board of Education	North	Mr.	David	Kakishiba
Alameda CTC Community Advisory Committee	Alameda CTC CWC	CW	Ms.	JoAnn	Lew
11 Health	Davis Street Family Resource Center	Central	Ms.	Teresa	McGill

Alameda County Transportation Commission

Community Advisory Working Group

Category	Organization	Planning Area	Title	First Name	Last Name
12 Civil Rights/Env./Social Justice/Faith-based Adv.	Genesis, and Corpus Christi Catholic Church (Piedmont)	North	Ms.	Gabrielle M.	Miller
13 CWC Organization	East Bay Bicycle Coalition	CW	Ms.	Betsy	Morris
14 Seniors/People with Disabilities	PAPCO	North	Ms.	Betty	Mulholland
15 Civil Rights/Env./Social Justice/Faith-based Adv.	United Seniors of Oakland and Alameda County (USOAC)	CW	Ms.	Eileen Y.	Ng
16 CWC Organization	East Bay Economic Development Alliance	CW	Mr.	James W.	Paxson
17 CWC Organization	Sierra Club	CW	Ms.	Patrisha	Piras
18 Civil Rights/Env./Social Justice/Faith-based Adv.	Transform (Community Planner)	CW	Mr.	Joel	Ramos
19 CWC Organization	Alameda County Labor Council	CW	Mr.	Anthony R.	Rodgers
20 Business	Board of Director for the City of Fremont Chamber of Commerce	South	Dr.	Raj	Salwan
Civil Rights/Env./Social Justice/Faith-based Adv.	ElderCare (Fremont, CA) Ponderosa Square Homeowners Association	South	Ms.	Diane	Shaw
22 Alameda CTC Community Advisory Committee	Alameda CTC PAPCO	CW	Ms.	Sylvia	Stadmire

Alameda County Transportation Commission Community Advisory Working Group

Category	Organization	Planning Area	Title	First Name	Last Name
23 Alameda CTC Community Advisory Committee	Alameda CTC BPAC	CW	Ms.	Midori	Tabata
24 Health	Alameda County Public Health Department	CW	Ms.	Pam L.	Willow
25 Seniors/People with Disabilities	Alameda CTC PAPCO	North	Mr.	Hale	Zukas
26 Education	Vacancy	CW			
27 Health	Vacancy	CW			