

Report to the Public



Measure B Sales Tax Activities

IN NOVEMBER 2000, ALAMEDA COUNTY VOTERS APPROVED MEASURE B, which extended the county's half-cent transportation sales tax to 2022 and set forth a 20-year Expenditure Plan. Measure B also established a **Citizens Watchdog Committee** (CWC) to represent the different perspectives of taxpayers throughout the county and to review all Measure B expenditures on projects, programs and administration for compliance with the Expenditure Plan.

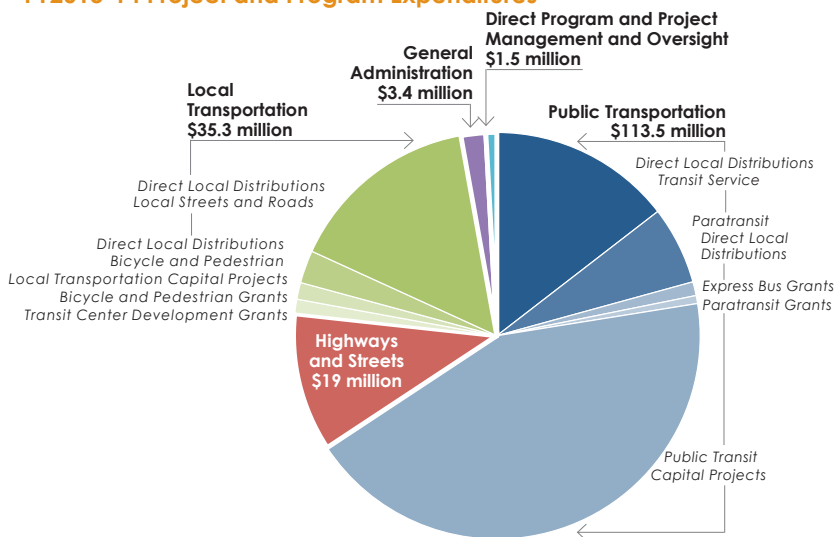


During this reporting period, CWC members performed a number of activities. This 13th annual report covers expenditures during the fiscal year ended June 30, 2014 (FY2013-14) and CWC activities through June 2015. Alameda CTC received an unmodified or clean independent audit opinion for FY2013-14, and the CWC accepted the auditor's opinion. The full report is available at <http://www.AlamedaCTC.org/CWC2015Report>.

Summary of Expenditures

The **Alameda County Transportation Commission** (Alameda CTC) is responsible for administering the Measure B half-cent transportation sales tax measure. In FY2013-14, Measure B revenues totaled \$127.1 million, and audited expenditures totaled \$172.7 million, which includes the expenditure of sales tax revenues received in prior years, for different transportation modes, oversight and administration.

FY2013-14 Project and Program Expenditures



Alameda CTC Programs

Alameda CTC allocates approximately 60 percent of Measure B funds, net of administrative funding, on a monthly, formula basis (direct local distributions) and through competitive grants to Alameda County, cities and transit agencies for programs. In FY2013-14, Alameda CTC expended \$71.8 million of Measure B funds on **programs**.

Alameda CTC Projects

Alameda CTC allocates approximately 40 percent of Measure B funds to capital projects, net of administrative funding. In FY2013-14, Alameda CTC expended \$96.0 million of Measure B funds on **capital projects** (see project status on back).

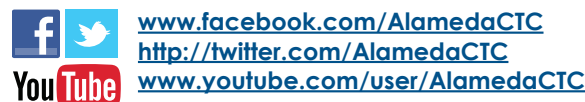
Citizens Watchdog Committee Activities

The following highlights the main activities the CWC has undertaken from July 1, 2013, through June 30, 2015.

- **Ongoing Programs and Capital Projects Watch:** The CWC continued to watch specific programs and capital projects and to monitor any issues of concern.
- **Ongoing Budget Update:** The CWC received and reviewed the annual budget and mid-year budget updates.
- **Audit and Compliance Report Review (Jan. 2014 and Jan. 2015):** The CWC reviewed **FY2012-13 and FY2013-14 audited financial statements and compliance reports** received from Measure B direct local distribution recipients and requested additional information from them. All CWC concerns were satisfactorily addressed.
- **Compliance Report Ad Hoc Subcommittee (October 2014):** The CWC met to review the new compliance report forms that include funding tables to facilitate the CWC review.
- **Independent Audits:** In November 2013 and November 2014, the CWC received presentations from independent auditors on Measure B revenues and expenditures. The independent auditors did not identify any concerns.
- **Audit Review Process:** In March 2014, the CWC created an audit subcommittee to provide input to the independent auditor on items of interest to the CWC.
- **Annual Report to the Public (2014):** In January 2014, the CWC established a subcommittee to discuss outreach objectives. In March 2014, CWC members established a subcommittee to develop its annual report to the public. In July, the CWC held a public hearing to receive comments on the report.
- **Responses to CWC and Public Requests for Information:** The CWC received updates on Alameda CTC's general fund balance reserve policy, the 2014 Transportation Expenditure Plan, capital project expenditures and other items of interest. Also in FY2013-14, Alameda CTC's **Local Business Contract Equity Program** exceeded its 70 percent Local Business Enterprises goal for professional and administrative services.

How to Get Involved

Join one of Alameda CTC's community advisory committees or feel free to attend and participate in the meetings. Visit www.AlamedaCTC.org to learn more and follow us on:



Project Status as of March 2015

Current Phase ¹	2000 MB Project No. and Project Name	County Area ²	Construction Schedule ³		Project Funding Sources ⁴ (\$ X million)						Total Cost/ Funding		
			Begin	End	2000 Measure B	Federal	State	Regional	Local	Other			
Complete	05	Fruitvale Transit Village	N	Oct 2002	Mar 2004	4.4	0.0	7.7	0.0	1.4	0.0	13.5	0.0
Complete	17	Hesperian/Lewelling Blvd Intersection Improvements	C	Oct 2003	Oct 2012	0.7	0.0	0.0	0.0	0.1	0.0	0.8	0.0
Complete	21	I-238 Widening	C	Sep 2006	Oct 2009	81.0	18.3	29.2	0.0	3.3	0.0	131.8	0.0
Complete	11	I-880/Washington Avenue Interchange Improvement	C	Apr 2009	May 2010	1.3	0.5	0.0	0.0	1.4	0.0	3.2	0.0
Complete	20	Newark Local Streets Rehabilitation	S	Jun 2003	Feb 2006	1.4	0.0	0.0	0.0	4.1	0.0	5.5	0.0
Complete	16	Oakland Local Streets Rehabilitation	N	Jul 2004	Dec 2006	5.3	0.0	0.0	0.0	0.0	0.0	5.3	0.0
Complete	06	Union City Intermodal Station	S	Jun 2007	Mar 2012	12.6	20.4	7.7	0.0	6.3	0.0	47.0	0.0
Complete / Construction	27	Emerging Projects (Congestion Relief Emergency Fund)	N/E	Various	Various	11.0	18.0	242.7	11.2	29.5	0.0	312.4	0.8
Complete / Construction	14	I-580 Auxilliary Lanes	E	Various	Various	14.5	6.4	115.8	14.5	1.0	0.1	152.3	0.6
Complete / Construction	18	Westgate Parkway Extension	C	Various	Various	7.9	0.0	0.0	0.0	0.0	0.0	7.9	0.1
Complete / Construction	07	San Pablo/Telegraph Avenue Corridor Transit Improvements	N	Various	Various	24.5	84.2	13.7	65.7	0.3	5.0	193.3	2.7
Complete / Environmental	08	I-680 Sunol Express Lanes Improvements	S/E	Various	Various	35.2	5.4	8.0	0.0	8.0	0.0	56.6	-0.9
Project Closeout	12	I-580/Castro Valley Interchanges Improvements	C	Jun 2008	Jun 2011	11.5	1.9	4.8	0.0	15.0	0.0	33.2	0.0
Project Closeout	23	Isabel Avenue - Route 84/I-580 Interchange	E	Jan 2009	Mar 2012	25.1	11.3	44.4	0.0	32.4	0.0	113.2	0.7
Project Closeout	13	Lewelling/East Lewelling Blvd Widening	C	Jul 2009	Oct 2012	13.6	0.0	4.3	0.0	13.8	0.1	31.8	1.4
Project Closeout	03	BART Oakland Airport Connector	N	Sep 2010	Nov 2014	89.1	25.0	78.9	146.2	145.0	0.0	484.2	23.9
Plant Est/ Construction	24	Route 84 Expressway	E	Various	Various	96.5	0.0	16.1	0.0	10.0	3.5	126.1	10.6
Construction	01	Altamont Commuter Express Rail	S/E	Various	Various	13.2	123.1	155.3	0.0	182.6	0.0	474.2	3.4
Construction	02	BART Warm Springs Extension	S	Sep 2009	Dec 2015	224.4	0.0	295.4	321.0	49.2	0.0	890.0	41.8
Construction	04	Downtown Oakland Streetscape Improvement	N	Sep 2007	Mar 2016	6.4	0.0	0.4	0.0	2.4	0.3	9.5	0.0
Construction	15	Route 92/Clawiter - Whitesell Interchange and Reliever Route	C	Mar 2015	Oct 2016	27.0	0.0	0.0	0.0	0.7	0.0	27.7	7.6
Design	19	East 14th St/Hesperian Blvd/150th St Intersection Improvement	C	Jan 2016	Sep 2017	3.2	0.0	0.0	0.0	2.8	0.0	6.0	0.0
Design	09	Iron Horse Transit Route	E	Jan 2016	Jun 2017	6.3	0.0	0.0	0.0	2.1	0.0	8.4	0.0
Environmental	25	Dumbarton Corridor Improvements	S	Various	Various	19.4	0.0	0.0	0.0	0.6	0.0	20.0	0.0
Environmental / ROW	26	I-580 Corridor/BART to Livermore Studies	E	Various	Various	41.8	0.2	30.9	125.5	1.8	6.9	207.1	2.3
Environmental	10	I-880/Broadway-Jackson Interchange Improvements (Study Only)	N	N/A	N/A	8.1	0.0	0.0	0.0	2.5	0.0	10.6	0.0
Scoping	22	I-680/I-880 Cross Connector Studies (Study Only)	S	N/A	N/A	1.2	0.0	1.0	0.0	0.3	0.0	2.5	0.0
Project Totals:						\$786.6	\$420.3	\$1,056.3	\$684.1	\$410.9	\$15.9	\$3,374.1	\$95.0

Notes:

- ¹ The Current Phase is based on a status date effective March 31, 2015. The Project Closeout phase indicates construction is complete, and the project financial closeout is underway.
- ² Project Planning Areas include C = Central County, E = East County, N = North County, S = South County.
- ³ Construction schedules shown are subject to change based on project delivery activities. Begin Construction date shown is typically the expected contract award date. End Construction date for BART capital projects is the point at which transit/revenue service will begin.
- ⁴ The funding amounts shown are subject to change based on programming and allocation activities by the applicable governing agency.