

## Measure BB 3rd Anniversary Bringing much-needed transportation solutions!



Good news travels fast — expanding BART, improving air quality and keeping transportation efficient and affordable are just a few of the promises Alameda CTC has kept with Measure BB funds. We have made substantial progress delivering projects and programs to improve Alameda County's transportation system and provide traffic relief and multimodal choices.

Projects underway include expanding BART, improving highway efficiency and safety, and keeping fares affordable for youth, seniors and people with disabilities. We are easing congestion by improving every major interstate in the county, upgrading busy city streets and finalizing a rail study on how to make the movement of goods and passengers more efficient. All this supports better air quality and jobs through local contracting opportunities.

November 2017 marks the third anniversary of the passage of Measure BB, and we are dedicating this issue to you — our riders, car sharers, transit-takers and community — to celebrate the projects and programs delivered to get you where you are going quickly and safely. Thank you, Alameda County!

### Transportation News

#### In This Issue

[GoPort receives \\$10 million grant](#)

[Expanding BART, bus and commuter rail](#)

[Keeping fares affordable](#)

[Providing traffic relief](#)

[Improving air quality](#)

[Creating good jobs](#)

#### We Want to Know About Your Experience Using the San Pablo Avenue Corridor

Alameda CTC is developing a long-term vision for the San Pablo Avenue corridor and identifying short-term projects to improve the safety and experience of all users. This effort focuses on San Pablo Avenue from downtown Oakland to Hilltop Mall/ Richmond Parkway, traversing four cities in Alameda County (Oakland, Emeryville, Berkeley and Albany) and several Contra Costa County communities (El Cerrito, Richmond and the City of San Pablo).

## Alameda CTC Receives \$10 Million Grant for GoPort



The Federal Highway Administration awarded Alameda CTC a \$10 million grant for the Global Opportunities at the Port of Oakland ([GoPort Project](#)). Funding will support the integration of a Freight Community System and advanced Intelligent Transportation Systems technology, which will increase efficiency of operations and improve air quality in nearby communities. Alameda CTC was the only recipient in California.

The GoPort Project will help address congestion within the Port and at key access points to the Port. It will also improve regional and interregional efficiency for the goods movement industry. Through new port-specific traffic

How do you use San Pablo Avenue and surrounding streets: what do you like and what challenges do you face using the corridor? Take a short online survey to ensure the project responds to your needs: <http://sanpablosurvey.crowdspotmap.com/page/welcome>. To find out more about the project, please visit <http://www.alamedactc.org/sanpabloave>.

## Additional Information

### [Contracting Opportunities](#)

[FasTrak is required to use the I-580 Express Lanes in the Tri-Valley](#)

[Commute with confidence - Sign up for the Guaranteed Ride Home Program](#)

[Commuter Choices - Learn about all your options including carpools](#)

[Bike Share - Now in the East Bay](#)

## Match Your Ride with New Carpooling Options

A number of new options to facilitate carpooling are now available in the Bay Area, all aimed at making carpooling more convenient. Carpool apps make it easy to schedule one-way carpool trips and allow you to be either a driver or a passenger. Try the 511 RideMatch Service to find and email neighbors with similar commutes, or one of the carpool apps available at [rideshare.511.org](http://rideshare.511.org).



## Learn More

[Alameda CTC Financials](#)

[Contracting Opportunities](#)

[Projects](#)

[Programs](#)

[2014 Transportation Expenditure Plan](#)

[Signage for Project and Program Sponsors](#)

## Alameda CTC Leverages Funding To Deliver Solutions

Alameda CTC has delivered transportation solutions throughout Alameda County by strategically leveraging local sales tax dollars with regional, state and federal funds by over \$3 billion. This year, passage of Senate Bill 1 and Senate Bill 595, authored by Senator Beall, offers new opportunities

management systems, mobile apps and other improvements, we will be able to keep trucks out of neighboring communities, manage truck arrivals, improve incident response and connect to regional smart corridor systems. The grant will also help fund the 7th Street Grade Separation project designed to improve truck and rail access to the Port.

[\(Back to top\)](#)

## Expanding BART, Bus and Commuter Rail for More Reliable, Safer and Faster Service

This spring, Alameda CTC successfully funded the opening of BART's Warm Springs station in Fremont, which brings BART commuters 5.4 miles closer to Silicon Valley. Easy and reliable connections to VTA and AC Transit make commuting to and from Alameda County and Santa Clara County much easier.

[AC Transit East Bay Bus Rapid Transit](#) (BRT) construction is underway to provide more reliable, faster travel along heavily traveled transit corridors in Oakland and San Leandro. Beginning at Broadway and 20th Street and traveling along International Blvd. and E. 14th Street to the San Leandro BART station, the improvements include new buses, bus stations and dedicated lanes, traffic signal priority and street improvements such as landscaped medians, better lighting and safer crosswalks. BRT benefits the local economy and creates jobs and opportunities for local businesses during construction, which began February 27, 2017, as well as when BRT is in service.

The [San Pablo Avenue](#) and [East 14th Street/Mission and Fremont Blvd.](#) multimodal corridor studies currently underway will help plan the transformation of major arterials in north, central and southern Alameda County. Transit priority and pedestrian/bicycle improvements will be reviewed to determine the best strategies for increasing safety for all travelers while reducing travel conflicts, accommodating future growth and improving comfort and quality of trips.

[\(Back to top\)](#)

## Keeping Fares Affordable for Seniors, Youth and People with Disabilities

This fall, Alameda CTC launched the second year of a three-year pilot [Student Transit Pass Program](#) — in cooperation with 15 schools in Alameda County reaching 17,000 students. Fully funded by Measure BB, the program makes it easy for students in Oakland, San Leandro, Hayward, Union City and Livermore to travel to and from school and after-school activities with free transit passes.



Together, Measure B and BB doubled existing funding for the [countywide paratransit program](#), investing approximately \$20 million per year in affordable senior shuttles, vans and services that keep seniors and people with disabilities independent. In June 2017, Alameda CTC completed a [paratransit needs assessment](#) to address affordability, access, ride performance and other needs of paratransit riders. Next steps include Alameda CTC and transit

for Alameda CTC to attract state and regional funds to deliver the transportation projects promised to voters with Measure BB funds, approved by voters in 2014.

For more information, visit:

[www.AlamedaCTC.org](http://www.AlamedaCTC.org),  
[facebook.com/AlamedaCTC](https://facebook.com/AlamedaCTC)  
[twitter.com/AlamedaCTC](https://twitter.com/AlamedaCTC)

## About Alameda CTC

The Alameda County Transportation Commission plans, funds and delivers transportation programs and projects that expand access and improve mobility to foster a vibrant and livable Alameda County. Funding sources for Alameda CTC's expenditure plans include Measure B, approved by 81.5 percent of county voters in 2000; Measure F, a Vehicle Registration Fee approved by 63 percent of county voters in 2010; and Measure BB, approved by more than 70 percent of voters in 2014.

For more information, visit:

[www.AlamedaCTC.org](http://www.AlamedaCTC.org),  
[facebook.com/AlamedaCTC](https://facebook.com/AlamedaCTC)  
[twitter.com/AlamedaCTC](https://twitter.com/AlamedaCTC)

providers working together to expand flexible transit options, support discounts and subsidized fare programs, and explore cost-sharing partnerships.

[\(Back to top\)](#)

## Relieving Traffic Along Major Commute Corridors

As one of the key promises of Measure BB, Alameda CTC is funding highway improvements and programs to provide congestion relief along major Alameda County Corridors.

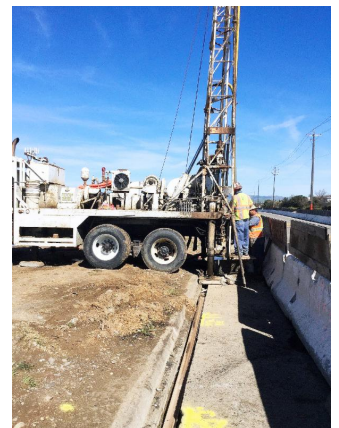


**Completing a new overcrossing at 29th Avenue** as part of our continued investment in I-880. This new configuration has reduced traffic congestion and collisions. Reconstruction of the [29th and 23rd Avenue interchanges](#) is also underway, which will make goods movement along this key connector route to the Port of Oakland safer and more efficient.

**Starting construction of the I-680 Sunol Northbound Express Lane in 2018.** As one of the top 10 congested corridors in the entire Bay Area, [the new express lane](#), combined with the existing southbound lane (the first to open in Northern California) will help further alleviate congestion on this busy corridor, which is central to goods and people movement between the East Bay and Silicon Valley. We also marked the first anniversary of the [I-580 Express Lanes](#), which opened to traffic in spring 2016.

### Releasing a draft environmental document for the [SR-84 Expressway Widening and SR-84/I-680 Interchange Improvements Project](#).

Caltrans, in cooperation with Alameda CTC, has released the Draft Environmental Impact Report/Environmental Assessment (EIR/EA) for this project. Caltrans is the lead agency under the California Environmental Quality Act and National Environmental Policy Act. Alameda CTC is the implementing agency for the preliminary design and environmental review phase. The project proposes to widen and conform SR-84 to expressway standards between south of Ruby Hill Drive and the I-680 interchange in southern Alameda County, improve SR-84/I-680 interchange ramps and extend the existing southbound I-680 high-occupancy vehicle/express lane northward by approximately 2 miles. This will alleviate traffic congestion, improve operations and safety, and improve bicycle access on SR-84 and at the SR-84/I-680 interchange. The [Draft EIR/EA](#) is available for public review online. For additional information, join us at public meetings on November 16 and 21 or view the project web page: [www.alamedactc.org/SR-84widening](http://www.alamedactc.org/SR-84widening).



**Advancing Global Opportunities at the Port of Oakland ([GoPort](#))** in partnership with the Port of Oakland. With grant funding from the FHWA, this project will add greater efficiency at the Port and improve circulation and direct access, which will help reduce truck emissions and improve air quality in nearby communities.

**Completing our Rail Strategy Study** to help address the growing demand for both freight and passenger rail service. The study reviews capacity issues, speed constraints and connectivity problems to identify a strategy to support efficient goods and passenger movement while improving safety and minimizing impacts on local communities.

Ongoing funding for the [Safe Routes to Schools Program](#), which helps

thousands of students safely walk, bike, roll, carpool or take transit to school in Alameda County each year. For example, 96 elementary and middle schools participated in the Golden Sneaker Contest in late February/early March for a chance to win a trophy made of sneakers donated by the Golden State Warriors. On May 11, 130 County schools participated in Bike to School Day, and more than 150 schools participated in International Walk and Roll to School Day on October 4, which was part of Alameda CTC's first Share Your Ride Week.

[\(Back to top\)](#)

## Improving Our Air with Clean Transportation Alternatives

Alameda CTC launched the first Share Your Ride Week program in Northern California during the week of October 2-6, 2017 to encourage solo drivers to rethink their commute and fill empty seats by skipping traffic and hopping on the bus or BART, or carpooling or using a Rideshare app. Street teams at Warm Springs BART and at local employers helped raise awareness of the benefits and technologies available for carpooling/taking public transit and provided incentives like pre-loaded Clipper® Cards. This helped reduced solo commutes



and traffic congestion while improving air quality. We also joined forces with the UC Berkeley in late fall to promote alternative transportation modes among college students. Alameda CTC continues to work year-round to encourage commuters to visit [Rideshare.511.org](https://www.alamedactc.org/eastbaygreenway) to find a ride match.



Projects that Alameda CTC funds like the East Bay Greenway also encourage people to walk or bike, further reducing greenhouse gas emissions and improving air quality. Extending 16 miles from Lake Merritt BART in Oakland to South Hayward BART, the project will create a safe bicycle and pedestrian pathway, linking seven BART stations in Oakland, San Leandro and Hayward. Draft East Bay Greenway environmental documents are available for [public review online](#). For more information, join us at a public meeting on November 16 or see the project webpage:

<https://www.alamedactc.org/eastbaygreenway>.

[\(Back to top\)](#)

## Providing High-Quality Jobs in Alameda County

With the passage of Measure BB, Alameda CTC entered into over 60 funding agreements with project sponsors totaling approximately \$217 million to support project delivery and implementation of various transportation projects and programs, spurring job creation and supporting local businesses across

Alameda County.

In April, we approved the [2018 Comprehensive Investment Plan](#) (CIP) that programmed \$405 million of funding over the next five years for a wide range of local transit, bike, pedestrian, highway and infrastructure improvements. Leveraging these dollars against nearly \$2.8 billion of additional funding will lead to a total investment of roughly \$3.2 billion worth of local transportation improvements in this CIP.



Alameda CTC is committed to delivering Measure BB, supporting local jobs and the local economy. Alameda CTC will continue to program additional Measure BB dollars in future CIPs.

[\(Back to top\)](#)

