

APRIL 2018

# EXECUTIVE DIRECTOR'S REPORT

The Executive Director's Report provides focused updates on Alameda CTC's work to improve transportation throughout Alameda County. This report provides status updates on key activities, including capital projects management and express lane operations; planning, policy and program implementation; finance and contracting; and programming and project controls. In addition, it contains brief summaries of advisory committee and agency activities.

This monthly update provides a synopsis of transportation project and program implementation funded with local, regional, state and federal funds.

## TABLE OF CONTENTS

- 1 Project Updates
- 2 Planning and Program Updates
  - Policy News
  - Programming Updates
- 3 Finance Updates
- 4 Agency Activities
  - Other News
  - Committee Activities

## Project Updates

### Expediting project delivery across Alameda County

In April 2017, Governor Brown signed Senate Bill 1, which provides a steady funding stream for transportation projects. To position projects to be competitive for this funding, Alameda CTC's delivery strategy focuses on bringing projects to a state of construction readiness. This entails authorizing work to implement project phases in parallel versus sequentially. In addition to expediting the schedule, this approach introduces cost savings through gained efficiencies.

Through an aggressive risk management process and by working with local jurisdictions, Alameda CTC identified projects eligible for an expedited delivery approach. The Commission approved and allocated approximately \$28 million of Measure BB sales tax funds to aggressively move these projects forward to provide congestion relief for Alameda County residents across three major highway corridors.

**I-80 Ashby Interchange Improvements** project proposes to reconstruct the Ashby Avenue interchange to provide a direct connection between westbound I-80 and Emeryville by way of Shellmound Street.



Rendering of the I-880 Interchange Improvements (Whipple Road/Industrial Parkway Southwest and Industrial Parkway West) project areas for the Feasibility Study

### **I-880 Interchange Improvements (Whipple Road/Industrial Parkway Southwest and Industrial Parkway West)**

project proposes interchange improvements ranging from operational improvements to ramps to complete replacement of the undercrossing/overcrossing structures to relieve congestion, enhance safety and improve access.

### **I-680 Express Lanes from SR-84 to Alcosta Boulevard**

project proposes to construct a 10-mile segment (one express lane in both the northbound and southbound direction) to complete the express lane network through Alameda County.

For project updates, visit the [Projects web page](#).

## Planning and Program Updates

### National Bike Month is around the corner



Get ready to travel on two wheels this May and join the National Bike Month activities happening throughout Alameda County! Join the main event — Bay Area Bike to Work Day — on Thursday, May 10. You can visit one of the many energizer stations located throughout the county to fuel riders on their way to work and join fellow bicyclists after work at a number of planned bike happy hour celebrations all over the East Bay. You can find more information on all the activities here: [https://bikeeastbay.org/events/btwd\\_2018](https://bikeeastbay.org/events/btwd_2018).

Bike to School Day will be celebrated on the same day. Find out if your school is participating, and get the whole family rolling. We expect over 100 Alameda County public schools to participate. Form a Bike Challenge Team with coworkers, friends or neighbors and get ready for some friendly competition.

If you want to tune up your bicycling skills, learn theft prevention tactics or get tips for riding at night or on downtown streets, Alameda CTC sponsors free Bicycle Safety Classes in English, Cantonese or Spanish to help all riders feel comfortable cycling

throughout the county. For more information visit the [Bike East Bay website](#).

Keep an eye out for the new iBike! visual promotion in early May. As in previous years, ads will be located throughout Alameda County on buses, at bus shelters and at online locations to celebrate and promote bicycling in Alameda County during Bike Month in May.

## Policy News

### Legislative update

In April, Alameda CTC staff met with agency staff and legislative members to discuss how the state and Alameda CTC can work together to advance transportation project and programs in Alameda County that provide mobility, access and critical connections to the region and beyond and align with state priorities.

Alameda CTC discussed progress in advancing goods movement and passenger rail, improving rail safety for students, funding the Affordable Student Transit Pass Program and delivering major projects early, including the I-680 Northbound Express Lanes, I-680 Express Lanes gap closure (SR-84 to Alcosta Blvd), I-580/I-680 interchange improvements, Port of Oakland improvements as well as other highway and transit infrastructure improvements that will reduce congestion in some of the most congested corridors in the Bay Area.

Also in April, Alameda CTC staff continued reviewing legislation related to the agency's adopted legislative platform that focuses on transportation funding; project

delivery and operations; multimodal transportation, land use and safety; climate change and technology; goods movement; and partnerships. Staff will bring positions on legislation for the Commission's consideration in the coming months.

## Programming Updates

### Compliance reporting review update

Alameda CTC distributes monthly a portion of Measure B, Measure BB and Vehicle Registration Fee (VRF) revenues by formula to eligible jurisdictions in the county to provide support for locally identified transportation improvements. These direct local distributions (DLDs) fund improvements through local transportation, bicycle/pedestrian, mass transit and paratransit programs.

DLD fund recipients are required to submit to Alameda CTC annual



Audited Financial Statements and Compliance Reports summarizing the prior fiscal year's expenditures and fund balances. Alameda CTC in conjunction with the Independent Watchdog Committee (IWC) reviews the reports for accuracy and compliance with voter-approved 2000 Measure B and 2014 Measure BB transportation expenditure plans. This year's reporting period is for FY2016-17.

Alameda CTC staff held its annual Measure B and Measure BB Audit Report and Program Compliance Review Workshop in January to assist [Programming Updates cont'd on page 3](#)

*Programming Updates cont'd from page 2*

IWC members during their review process. Alameda CTC will present its findings to the Commission in June as a part of its Annual Program Compliance Report.

**Paratransit Discretionary Grant Program**

Alameda CTC's Paratransit Discretionary Grant Program is intended to fund projects and programs that improve availability, affordability, access to and coordination of transit and paratransit services for seniors and people with disabilities.

Alameda CTC is accepting applications in fall 2018 for Paratransit Discretionary Grant Program funds for a five-year programming window, FY2019-20 through FY2023-24. The discretionary funding is designed to complement DLD funding and is intended to support projects that:

- Improve mobility by reducing the differences in types of services available to seniors and people with disabilities.
- Address critical gaps in transportation systems for seniors and people with disabilities.
- Encourage seniors and people with disabilities to use fixed-route public transit.
- Improve the quality and affordability of transit and paratransit services.
- Improve the efficiency and effectiveness of Americans with Disabilities Act-mandated and local, city-based services.

Alameda CTC is working with its advisory committees to finalize full programming guidelines and priorities for the upcoming call for projects.

**Finance Updates**

**FY2018-19 annual budget development**

During March, the finance team continued work on a mid-year update to the FY2017-18 budget and kicked off the process for the development of the FY2018-19 annual budget. The finance team is working closely with the programming team to accumulate the expenditure needs for the coming fiscal year from all departments to apply appropriate revenue sources as approved in the Comprehensive Investment Plan. This process should continue over the next month with a goal of having a balanced FY2018-19 draft budget ready for Commission review and approval in May 2018.

**Contracting opportunities**

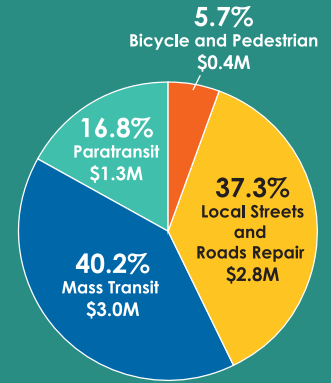
Over the next year, Alameda CTC or its sponsor agencies anticipate solicitation of statements of qualifications, bids and/or proposals for the following:

- Professional services contracts related to:
  - SR-84 Widening from South of Ruby Hill Drive to I-680 and SR-84/I-680 Interchange Improvements (re-advertisement)
  - Legislative Advocacy Services – State
  - Legislative Advocacy Services – Federal
  - On-Call Planning and Programming Technical Services
  - Express Lane System Manager/Program Support
  - Toll Lanes System Integrator Services for I-580 Express Lanes and Future Network Expansion
  - Express Lane Toll Revenue Forecasting
  - MacArthur Smart City Corridor Project, Phase 1
  - East Oakland Community Streets Plan

**Transportation Investments**

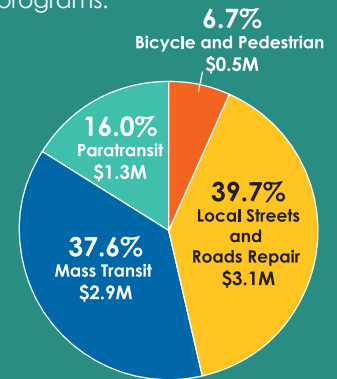
**Measure BB Program Distributions**

Measure BB direct local distributions began in April 2015 and total over \$202.8 million; \$7.5 million was distributed in January 2018.



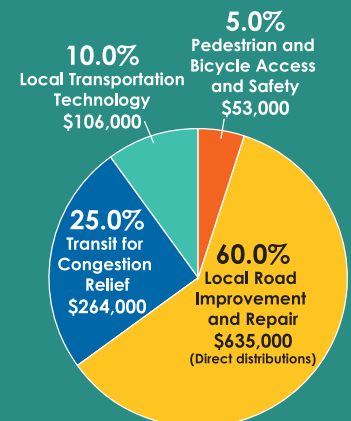
**Measure B Program Distributions**

Measure B direct local distributions have totaled more than \$971.8 million since 2002. In January 2018, over \$7.8 million was distributed for four programs.



**Vehicle Registration Fee**

Since 2011, Alameda CTC has distributed more than \$47.5 million for local road repair; over \$1.0 million was collected in January 2018.



## Agency Activities

In April, Alameda CTC will participate in the following events:

- BikeMobile visits:
  - April 11 – Brier Elementary, Fremont
  - April 12 – Hart Middle, Pleasanton
  - April 13 – Fallon Middle, Dublin
  - April 17 – Grimmer Elementary, Fremont
  - April 18 – Pleasanton Middle, Pleasanton
  - April 19 – Irvington High, Fremont
  - April 21 – Marin Elementary, Albany
  - April 22 – Pleasanton Earth Day Festival, Pleasanton
  - April 25 – James Madison Elementary, San Leandro
  - April 26 – Harvest Park Middle, Pleasanton
  - April 27 – Joe Mitchell K-8, Livermore
- April 19 – I-680 Sunol Express Lanes Groundbreaking
- April 25 – Senior Wellness Fair, South Berkeley Senior Center
- April 26 – Senior Resource Fair, Albany Senior Center

### CARPPOOLING OPTIONS

A number of options to facilitate carpooling are available in the Bay Area, all aimed



at making carpooling more convenient. Carpool apps available at [rideshare.511.org](http://rideshare.511.org) make it easy to schedule one-

way carpool trips and allow you to be either a driver or a passenger.

### COMMUTE CHOICES

Whether you're a commuter trying to affordably and safely get around Alameda County or an employer coordinating staff transportation options, the [Commute Choices website](#) has the resources you need.

## Other News

### Platinum Sneaker Award winner

From February 26 to March 9, approximately 65,000 students from 94 Alameda County elementary, middle and high schools throughout Alameda County participated in the Safe Routes to Schools Golden Sneaker Contest! The two-week contest encourages students, parents, teachers and administrators to make healthy choices in school travel by walking, biking, carpooling and taking transit as many days as they can during the contest period and recording these trips.



At the end of the contest, the classroom in each school with the highest percentage of students using

active or shared transportation for school travel received a Golden Sneaker trophy. The trophies, created with sneakers donated by the Golden State Warriors, honored the students' efforts to support a healthy environment and active choices. Families who live too far away to walk or bike to school could participate in the contest by parking several blocks away and then walking or taking the bus, or by carpooling to school.

In addition, the Alameda County Safe Routes to Schools Program awards the school with the greatest percent increase in students who walk, bike, carpool or take transit to schools with the ultimate prize – the Platinum Sneaker Award. We are excited to announce that this year's winner is **Oliveira Elementary School in Fremont**. Oliveira Elementary will be honored by Alameda CTC at its April 26, 2018 Commission meeting.

This annual contest is sponsored by the [Alameda County Safe Routes to Schools Program](#), which is funded by the Alameda County Transportation Commission.

## Committee Activities

### Advisory committees

In April 2018, Alameda CTC's advisory committees did not hold any public meetings. Upcoming public meetings in May 2018 include:

May 10 – [Alameda County Technical Advisory Committee \(ACTAC\)](#)

May 21 – [Paratransit Advisory and Planning Committee \(PAPCO\)](#)

### Finance Updates cont'd from page 3

- Construction contracts related to:
  - Dublin Widening, Westbound from Two to Three Lanes
  - Mission Boulevard Phases 2 and 3
  - South Bayfront Bridge
  - Berkeley Southside Pilot Transit Lanes

For more information, visit the [Contracting Opportunities web page](#).



Rendering of the Berkeley Southside Pilot Transit Lanes (courtesy of Bike East Bay)