

Measure B and BB Projects and Programs Are Improving Mobility, Safety and Transit Access



Better mobility and safety are the hallmarks of the [I-80 SMART Corridor project](#), now fully activated along I-80 between the Carquinez and Bay Bridges. The project's many integrated high-tech components work together to improve travel-time reliability and enhance safety in part by reducing secondary accidents in one of the most congested corridors in the Bay Area.

The Measure B- and Measure BB-funded [East Bay Bus Rapid Transit \(BRT\) project](#) broke ground in August with Secretary of Transportation Anthony Foxx on hand to celebrate. AC Transit's first BRT line will provide service with limited stops along the 9.5-mile corridor from downtown Oakland to the San Leandro BART station and will feature level boarding, pre-paid ticketing and dedicated transit lanes. East Bay BRT is expected to open late 2017.



The Measure BB-funded [Student Transit Pass Pilot Program](#) launched in several Alameda County middle schools and high schools in time for the start of this school year. Thousands of students received their free or discounted transit passes and are using them to get to school and to afterschool activities and jobs.

In addition, Alameda CTC's [Comprehensive Investment Plan \(CIP\) call for projects and programs](#) seeks applications through October 31, 2016 from local cities, transit operators and the county, for transportation improvements.

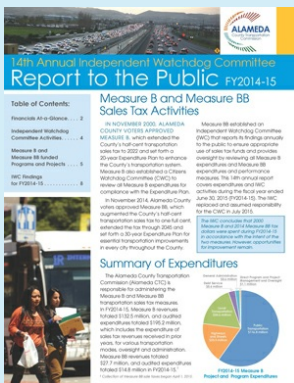
[Get FasTrak to Use the I-580 Express Lanes in the Tri-Valley](#)

[Commute with Confidence - Sign up for the Guaranteed Ride Home Program](#)

[Commute Choices - Learn about all your options including carpools](#)

International Walk and Roll to School Day
Alameda County students joined millions of students around the world who walked, biked, rolled, scootered or skated to school on October 5th. This annual event is part of the [Safe Routes to Schools Program](#) funded by Measure B.

IWC 14th Annual Report to the Public



In August the Independent Watchdog Committee (IWC) released its [14th Annual Report to the Public](#), covering fiscal year 2014-15 expenditures and IWC activities. The report confirms that Alameda CTC's audited income and expenditures were in compliance with specific caps, and the auditors identified no accounting concerns. The Executive Summary is available in [English](#), [Chinese](#) and [Spanish](#).

[Learn More](#)



In September Alameda CTC, in partnership with Caltrans and the Contra Costa Transportation Authority, celebrated the activation of the [I-80 SMART Corridor](#), the most comprehensive intelligent transportation system in the state. The project implemented a network of integrated electronic signs, ramp meters and other state-of-the-art elements along the 20-mile corridor between the Carquinez Bridge and the Bay Bridge to enhance motorist safety, improve travel time reliability and reduce accidents and associated congestion. The project was funded in part by local voter approved sales tax dollars from Alameda County's Measure B and Contra Costa County's Measure J.

Real-time traffic information, including variable advisory speed signs and lane-specific signs, allow drivers to make informed decisions in the event of an incident. Ramp meters and real-time message signs along the corridor contribute to optimized roadway operations and improved safety, and are integrated with and managed from the Traffic Management Center at the Caltrans Bay Area headquarters in Oakland. Additional improvements include adaptive ramp metering on 43 on-ramps to reduce merging conflicts and manage traffic volumes on I-80.

To see additional project information including an infographic and video that explains the overhead signs, visit 80smartcorridor.org.

[\(Back to top\)](#)

Student Transit Pass Pilot Program

Reducing transportation access barriers to and from school

The cost of transportation to school can be a barrier to school attendance and participation in afterschool activities and



jobs for middle and high school students. In an effort to address this, the [Affordable Student Transit Pass Pilot Program](#) was launched in August 2016 and will test the effectiveness of the passes to help reduce barriers to transportation access to and from schools. The program is

[Alameda CTC Financials](#)

[Contracting Opportunities](#)

[Projects](#)

[Programs](#)

[2014 Transportation Expenditure Plan](#)

[Signage for Project and Program Sponsors](#)

About Alameda CTC

The Alameda County Transportation Commission plans, funds and delivers transportation programs and projects that expand access and improve mobility to foster a vibrant and livable Alameda County. Funding sources for Alameda CTC's expenditure plans include Measure B, approved by 81.5 percent of county voters in 2000; Measure F, a Vehicle Registration Fee approved by 63 percent of county voters in 2010; and Measure BB, approved by more than 70 percent of voters in 2014.

For more information, visit: www.AlamedaCTC.org, facebook.com/AlamedaCTC twitter.com/AlamedaCTC

funded by Measure BB.

The pilot program distributes transit passes for free or at a discounted price to select students for use on the various transit providers that serve the pilot schools, afterschool activities and job locations in Alameda County to:

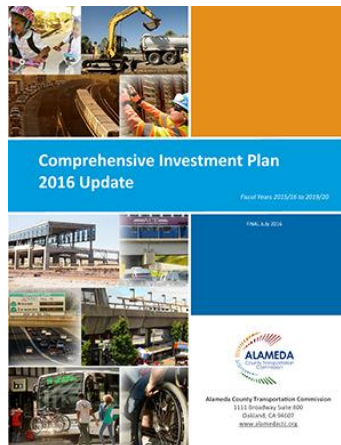
- Reduce barriers to transportation access to and from schools.
- Improve transportation options for Alameda County's middle and high school students.
- Build support for transit in Alameda County.



[\(Back to top\)](#)

2018 Comprehensive Investment Plan

Call for project nominations ends October 31



This September, Alameda CTC began development of the 2018 Comprehensive Investment Plan (CIP) to program available funding anticipated for fiscal years 2017-18 through 2021-22. The purpose of the CIP is to facilitate strategic programming and allocation of all fund sources under Alameda CTC's programming responsibilities. Local jurisdictions and transit agencies, as well as organizations that work with seniors and people with disabilities are encouraged to nominate eligible projects that are ready to implement

over this five-year horizon.

Refer to http://www.alamedactc.org/app_pages/view/19025 for the application, submission instructions, programming and matching requirements, eligibilities and other information. Applications will be accepted through October 31, 2016. [\(Back to top\)](#)

