



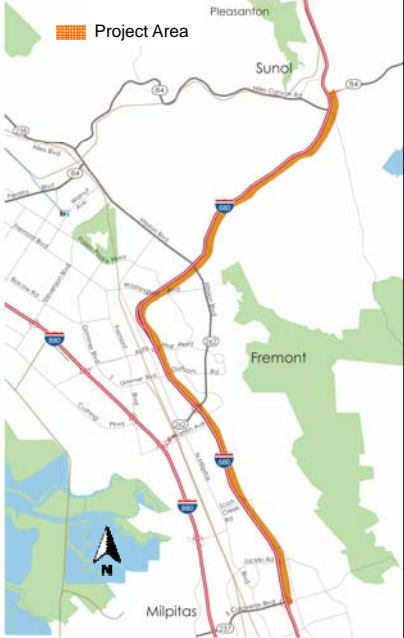
I-680 NB Express Lane Monthly Project Status Update

A Presentation for the
Sunol Smart Carpool Lane Joint Powers Authority (SSCLJPA)
June 10, 2013




Progress Reporting

- ❑ Activities Completed Since Last Month
- ❑ Upcoming PA&ED Activities
- ❑ Schedule



I-680 Sunol SMART Carpool Lane Joint Powers Authority



2

Activities Completed/In-progress

- ❑ Traffic & Revenue Studies
 - ✓ Draft Traffic Operational Analysis Report (TOAR)
 - ✓ Revenue Forecast

- ❑ Environmental Technical Studies
 - ✓ Field Studies
 - ✓ Draft Technical Reports

Activities Completed/In-progress

- ❑ Geometric Development
 - ✓ Preliminary Geometric Design
 - ✓ Preliminary Design Standard Variances
 - ✓ Preliminary Advance Planning Studies
 - ✓ Draft Technical Reports
 - ✓ Value Analysis

- ❑ Stakeholder/Public Participation
 - ✓ Project Development Team meeting (on-going)

Upcoming PA&ED Activities in 2013

- ❑ Traffic Studies
 - ✓ Final TOAR (July 2013)
- ❑ Environmental Technical Studies
 - ✓ Final Technical Reports (July 2013)
- ❑ Preliminary Engineering
 - ✓ Geometric Approval (July 2013)
 - ✓ Final Technical Reports (July 2013)

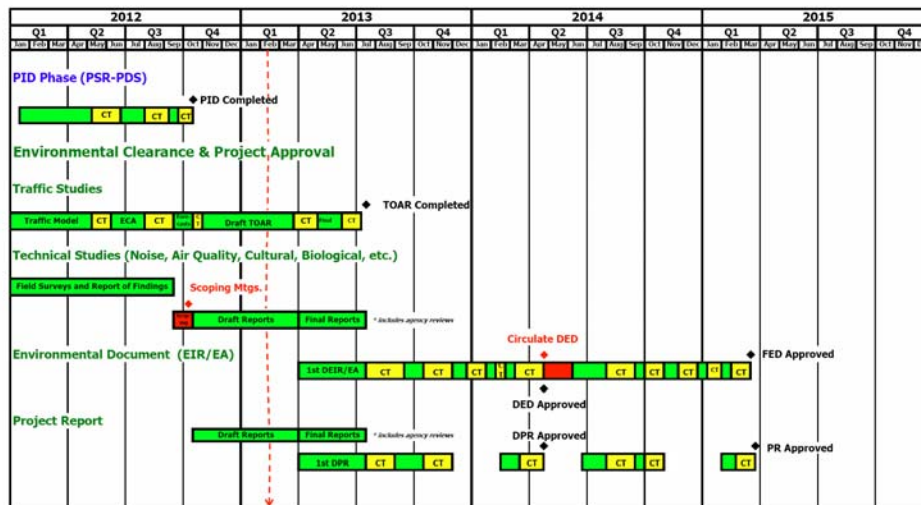
Upcoming PA&ED Activities in 2013

- ❑ Project Approval
 - ✓ Administrative Draft Project Report (July 2013)
- ❑ Environmental Document
 - ✓ Administrative Draft EIR/EA (July 2013)

Key Focus Areas

- ❑ Access
- ❑ Noise
- ❑ Traffic Operations
- ❑ Toll Pricing/ Violation Enforcement
- ❑ Funding
- ❑ Project Phasing
- ❑ Schedule

Current Phase Schedule Activities



Traffic Study Limits & Approach

- Study Envelope
- Local Approval on Study Approach

I-680 Sunol SMART Carpool Lane Joint Powers Authority

ALAMEDA 9

Project Schedule

Project Initiation Document (PID)	October 2012 (A)
Project Approval (PA&ED)	March 2015 (T)
Ready to List (PS&E)*	March 2017 (T)
Right of Way Cert.*	March 2017 (T)
Begin Construction*	July 2017 (T)
End Construction (CCA)*	December 2018 (T)

* Subject to funding availability

I-680 Sunol SMART Carpool Lane Joint Powers Authority

ALAMEDA 10