

PROJECT SPONSOR

Alameda CTC

PROJECT DESCRIPTION

The project involves studies in three corridors related to an improved connection between I-680 and I-880 in southern Alameda County. Potential improvements include road modifications, intersection specific improvements and traffic system management options.

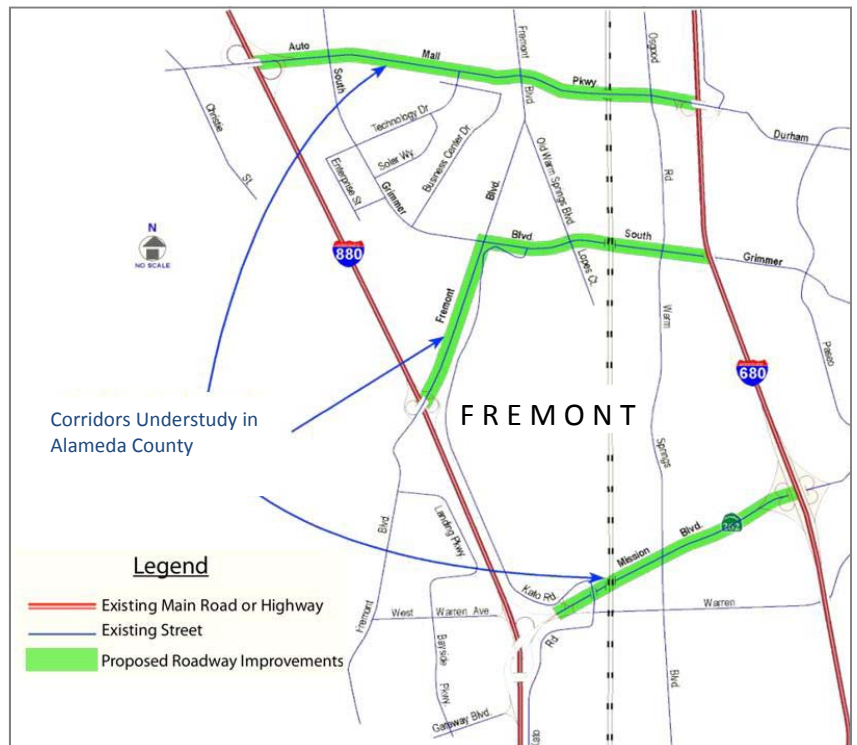
PROJECT STATUS

In mid-2005 the VTA prepared a report which identified a program of improvements for three corridors within Alameda County. In mid-2006 a consultant was selected to explore improvements within Alameda County between I-680 and I-880.

Development of a Project Study Report (PSR) for the Mission Boulevard / Warm Springs Corridor is currently on hold due to a Caltrans oversight resource issue.

I-680/I-880 Cross Connector Studies

Project Number: 770.0 | March 2012



Project Highlights

- The PSR is currently focused on improvements at the I-680 / Mission Boulevard Interchange

Project Fact Sheet

I-680 / I-880 Cross Connector Studies

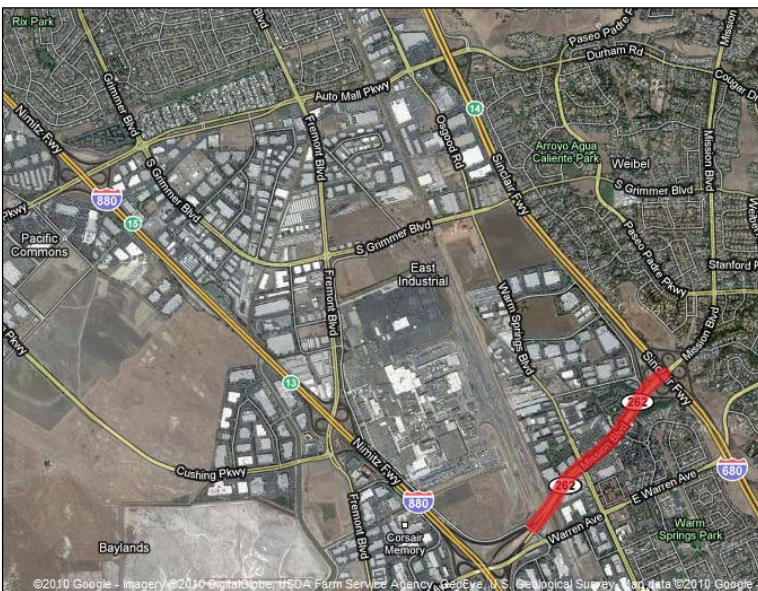
Project Number: 770.0

March 2012

PROJECT COST ESTIMATE	
Cost Estimate by Phase (\$ X 1,000)	
Scoping	\$ 2,528
PE/Environmental	\$ 0
Final Design (PS&E)	\$ 0
Right-Of-Way	\$ 0
Utility Relocation	\$ 0
Construction	\$ 0
Equipment Purchase	\$ 0
TOTAL Expenditures:	\$ 2,528

PROJECT FUNDING	
Funding by Fund Source (\$ X 1,000)	
Measure B	\$ 1,233
Federal	\$ 0
State	\$ 1,000
Regional	\$ 0
Local	\$ 295
Other	\$ 0
TOTAL Revenues:	\$ 2,528

PROJECT SCHEDULE								
Project Phase	Begin - End MM/YY	2010	2011	2012	2013	2014	2015	2016
Scoping	03/01 - 06/10							
Scoping (Alameda County)	07/06 - 06/12							



Aerial view Mission Blvd. (Route 262) which is one of the corridors in southern Alameda County which is currently being evaluated.

Note: The information on this fact sheet is subject to periodic updates.